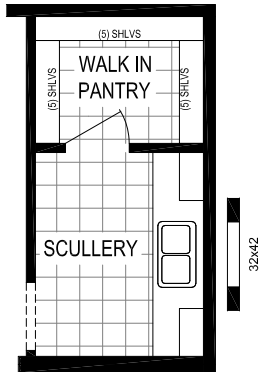
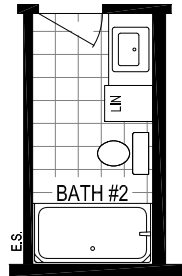


**Residence**  
**"MCANN BLVD"**  
**Model 6830-MS070**  
**2040 Square Feet - 3 Bed / 2 Bath**

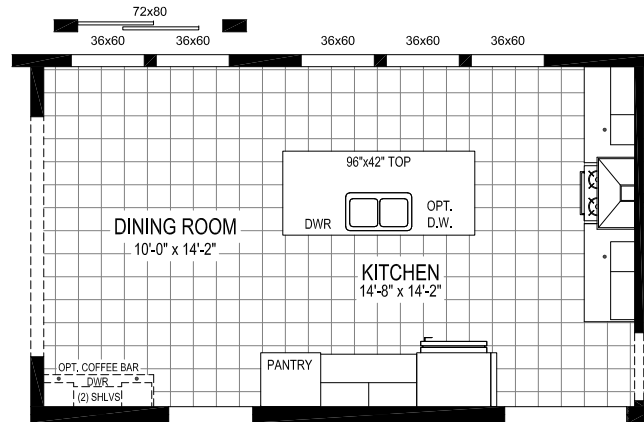
TITLE: <b>26-6830-MS070</b>		CMH MANUFACTURING WEST	
DRAWN BY: TF	DATE: 1/14/26	437 N. Main Street, Milbury, MA 01460	
SERIES: Residence	LAST REVISED: 1/23/26	PH: 574.825.7500 FAX: 574.825.7569	
SCALE: XXXXXXXXXXXX	CALC REF: XXXXXXXXXXXX	SHEET: <b>26-6830-MS070-LIT</b>	
11/17/2025 7:59 AM		26-6830-MS070-LIT.dwg	



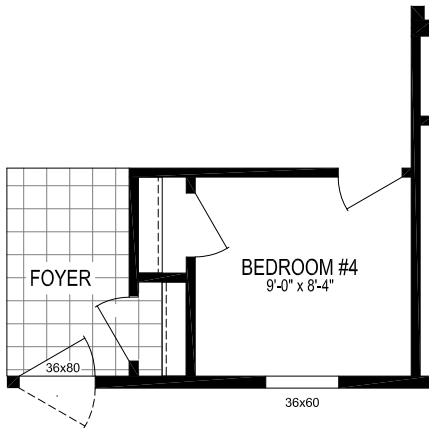
OPT. SCULLERY IPO MUD ROOM  
(FRONT ENTRY REQUIRED)



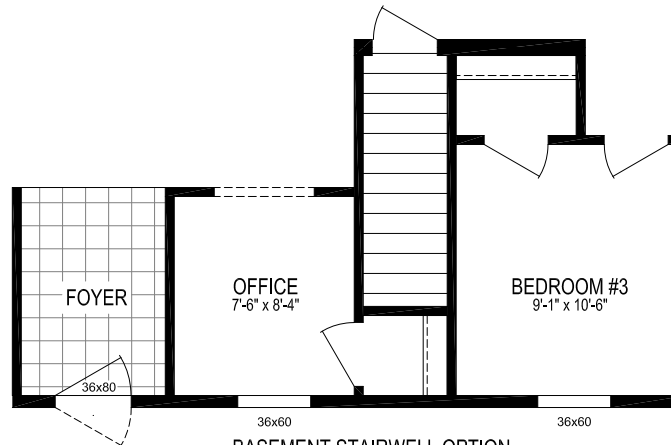
OPT. LINEN IN BATH #2  
(REDUCES VANITY)



OPT. EURO STYLE RANGE HOOD



4TH BEDROOM OPTION



BASEMENT STAIRWELL OPTION  
(NOT AVAILABLE WITH 4 BEDROOM)

Residence  
"MCANN BLVD"  
Model 6830-MS070  
2040 Square Feet - 3 Bed / 2 Bath

## FLOOR PLAN OPTIONS

TITLE: <b>26-6830-MS070</b>		CMH MANUFACTURING WEST	
DRAWN BY: TF	DATE: 1/14/26	Clayton Manufacturing - Plant 881 437 N. Main Street, Milford, MA 01860 PH: 574.825.7500 FAX: 574.825.7569	
SERIES: Residence	LAST REVISED: 1/26/26	SHEET: <b>26-6830-MS070-LIT</b>	
SCALE: XXXXXXXXXXXX	CALC REF: XXXXXXXXXXXX		
11/17/2025 7:59 AM	26-6830-MS070-LIT.dwg		