

2024



*Kalahari Series*

*Homes*

Single & Sectional



DREAM IT. DESIGN IT. BUILD IT. LOVE IT.

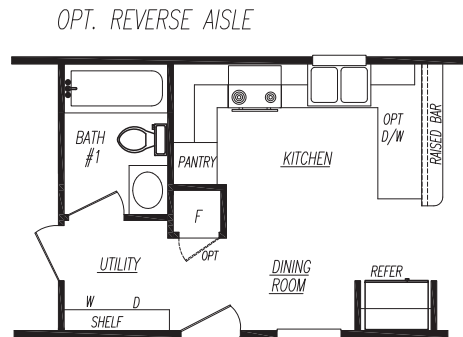
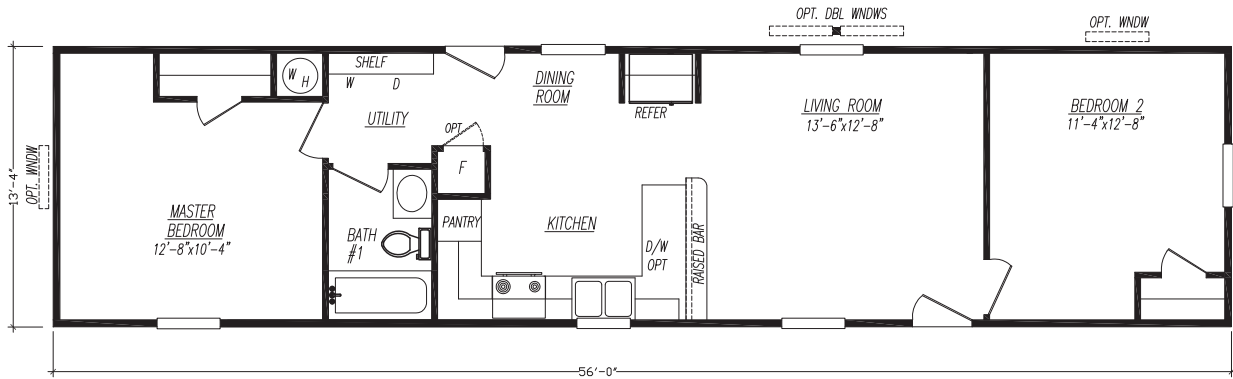
*Your Adventure begins here.*



Welcome to Adventure Homes. We offer you the best value in manufactured housing in today's market. Our homes are built with unbelievable eye appeal and standard features that are above and beyond HUD code. Additionally, we offer award winning sales, service and production teams to enhance your value even more. **We look forward to assisting you and welcoming you into our family of satisfied retailers and customers!**

# Model 2562Z-KH

2 Bedroom • 1 Bath • Floor Size 747 sq. ft.



Every home built by Adventure is constructed with premium materials in a climate-controlled enclosed building facility. This helps eliminate weather-damaged building supplies and weather-related delays. These state-of-the-art facilities ensure precise and quality construction. All Adventure homes meet, and in many cases exceed, HUD code.

Adventure Homes Kalahari Series is standard with Pre-Determined Interior Decor Choices.

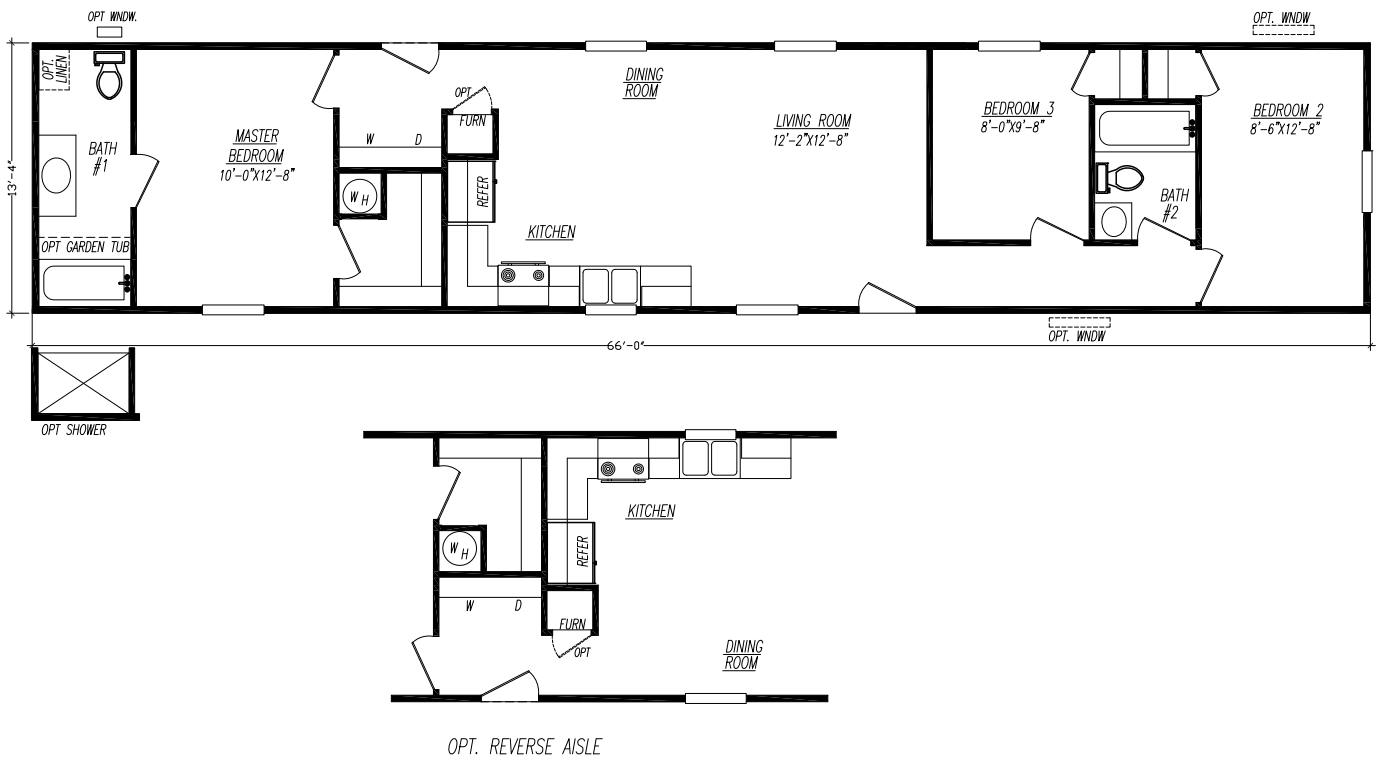
# Model 2602A-KH

2 Bedroom • 2 Bath • Floor Size 800 sq. ft.



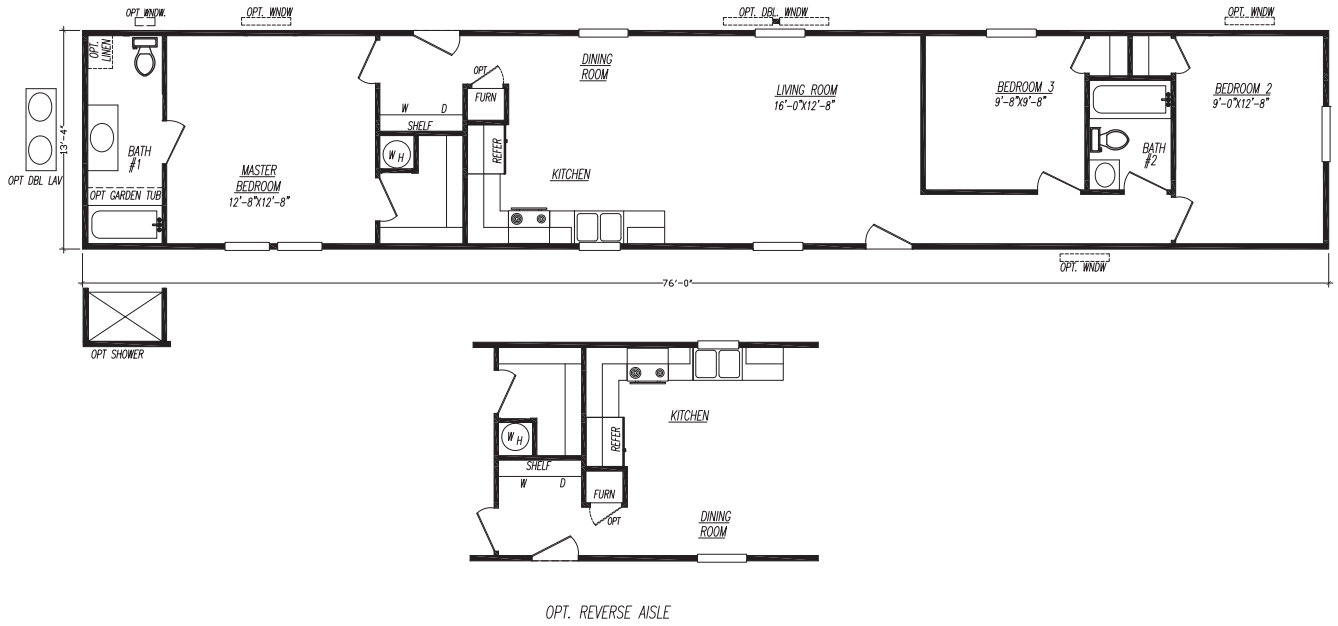
# Model 2663F-KH

3 Bedroom • 2 Bath • Floor Size 880 sq. ft.



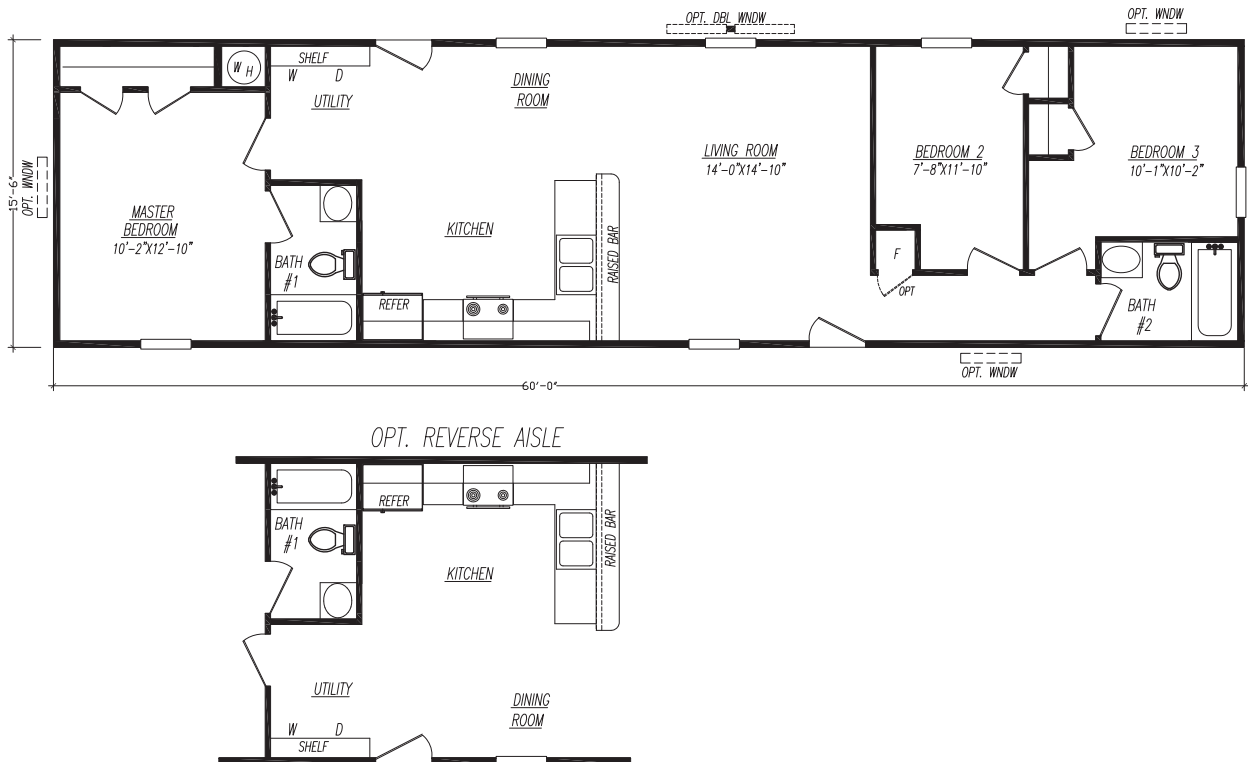
# Model 2763D-KH

3 Bedroom • 2 Bath • Floor Size 1,014 sq. ft.



# Model 6603U-KH

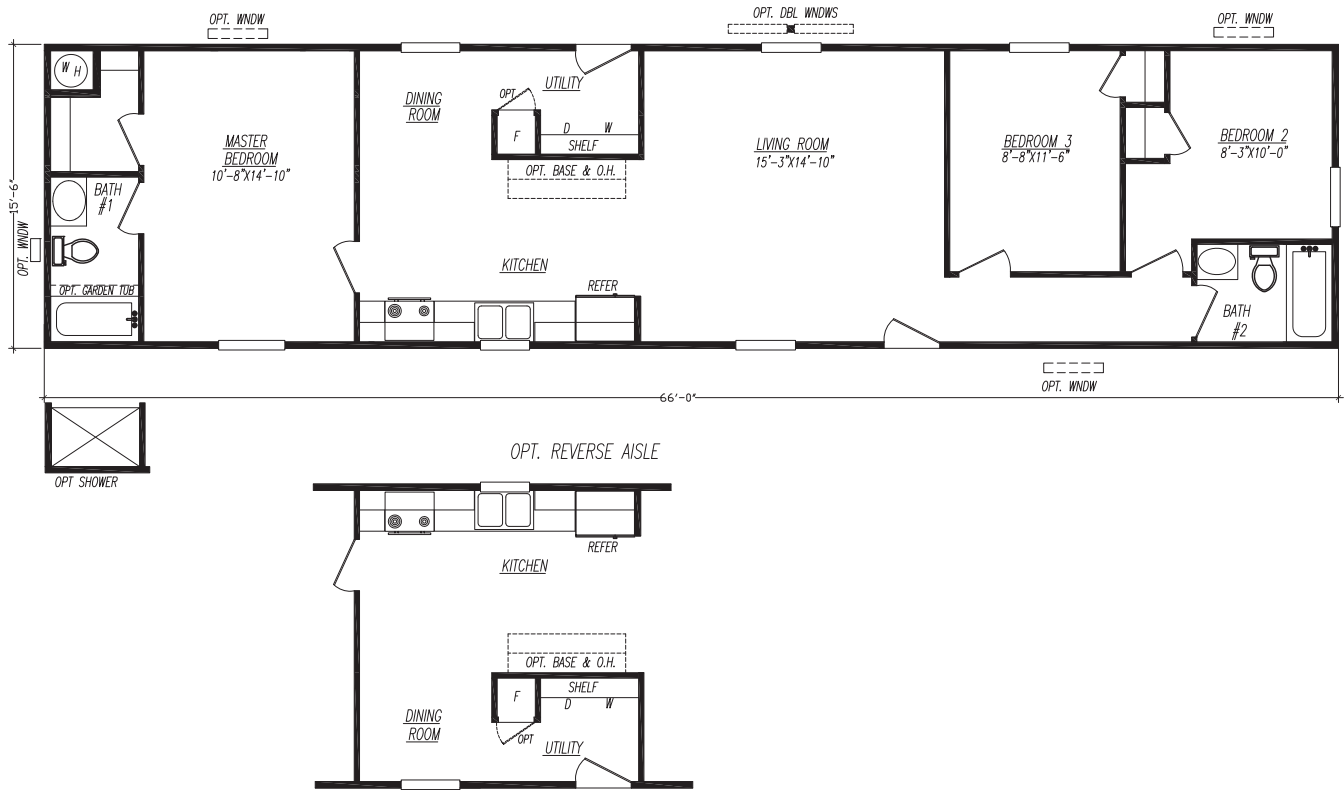
3 Bedroom • 2 Bath • Floor Size 930 sq. ft.





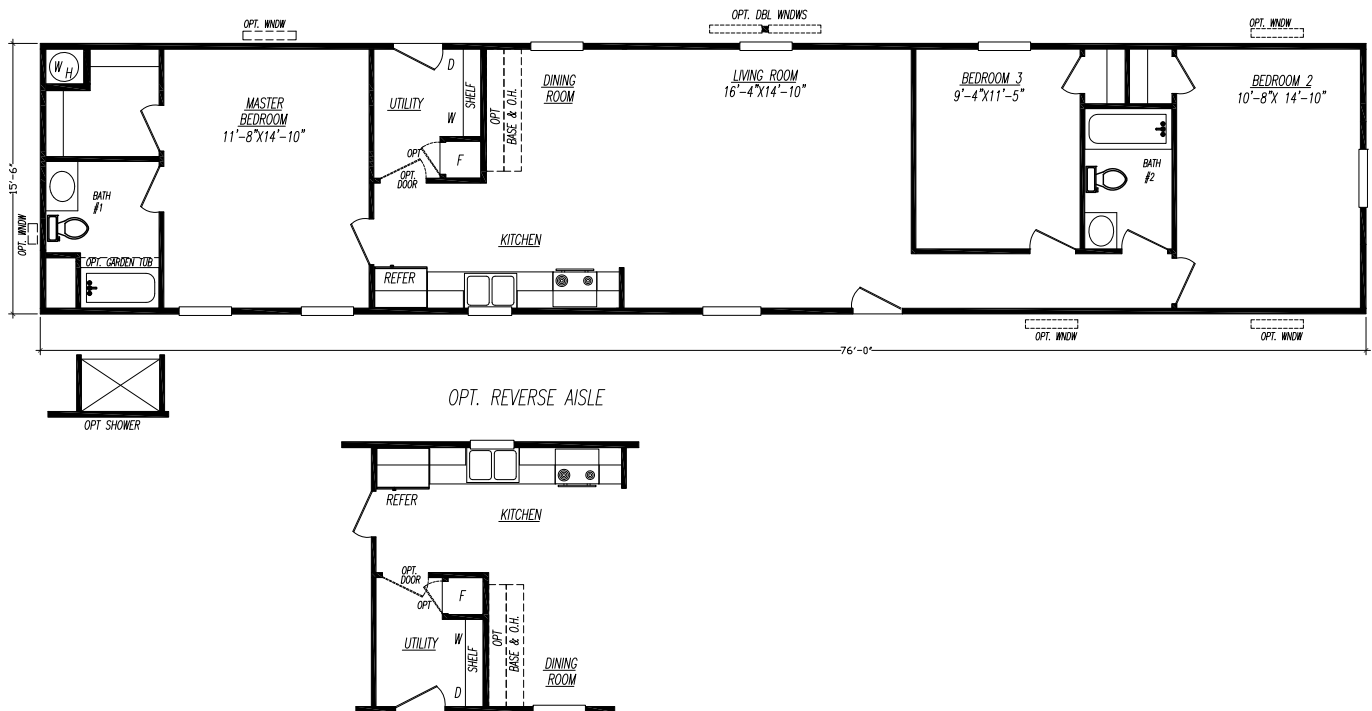
# Model 6663X-KH

3 Bedroom • 2 Bath • Floor Size 1,023 sq. ft.



# Model 6763B-KH

3 Bedroom • 2 Bath • Floor Size 1,178 sq. ft.



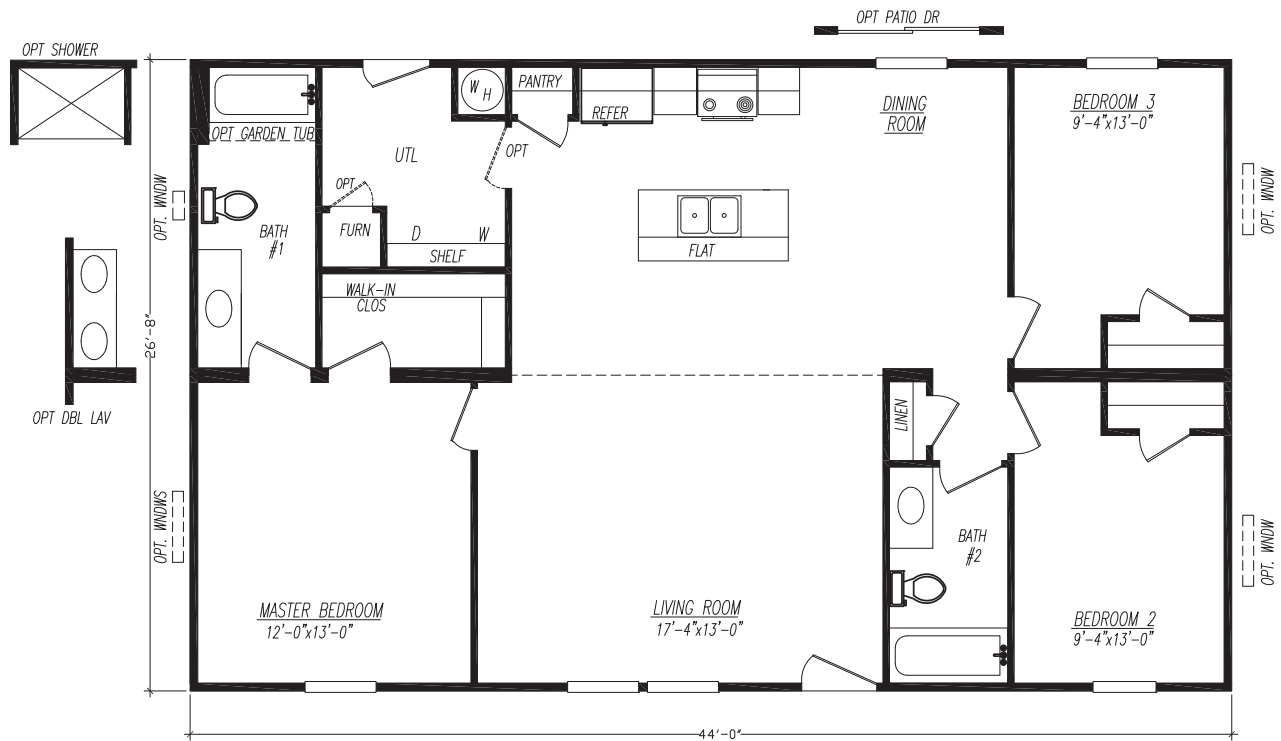
# Model 6763M-KH

3 Bedroom • 2 Bath • Floor Size 1,178 sq. ft.



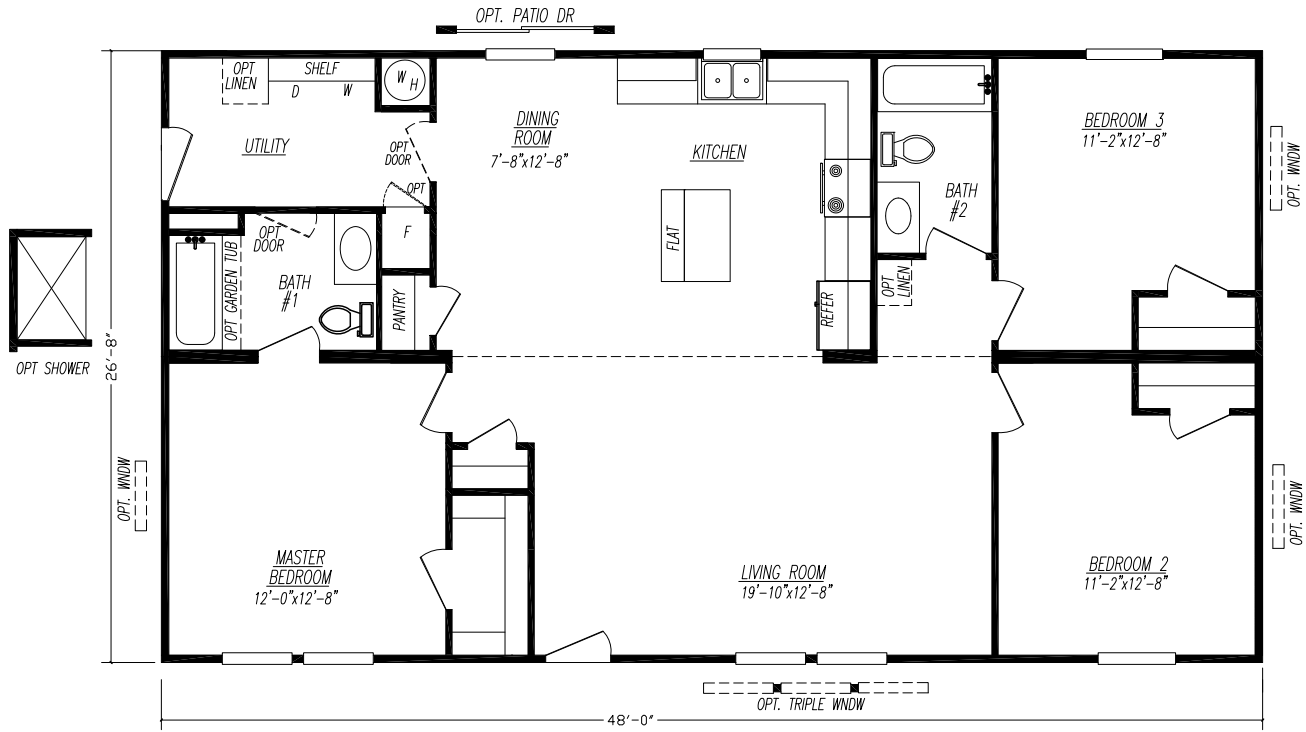
# Model 4443X-KH

3 Bedroom • 2 Bath • Floor Size 1,173 sq. ft.



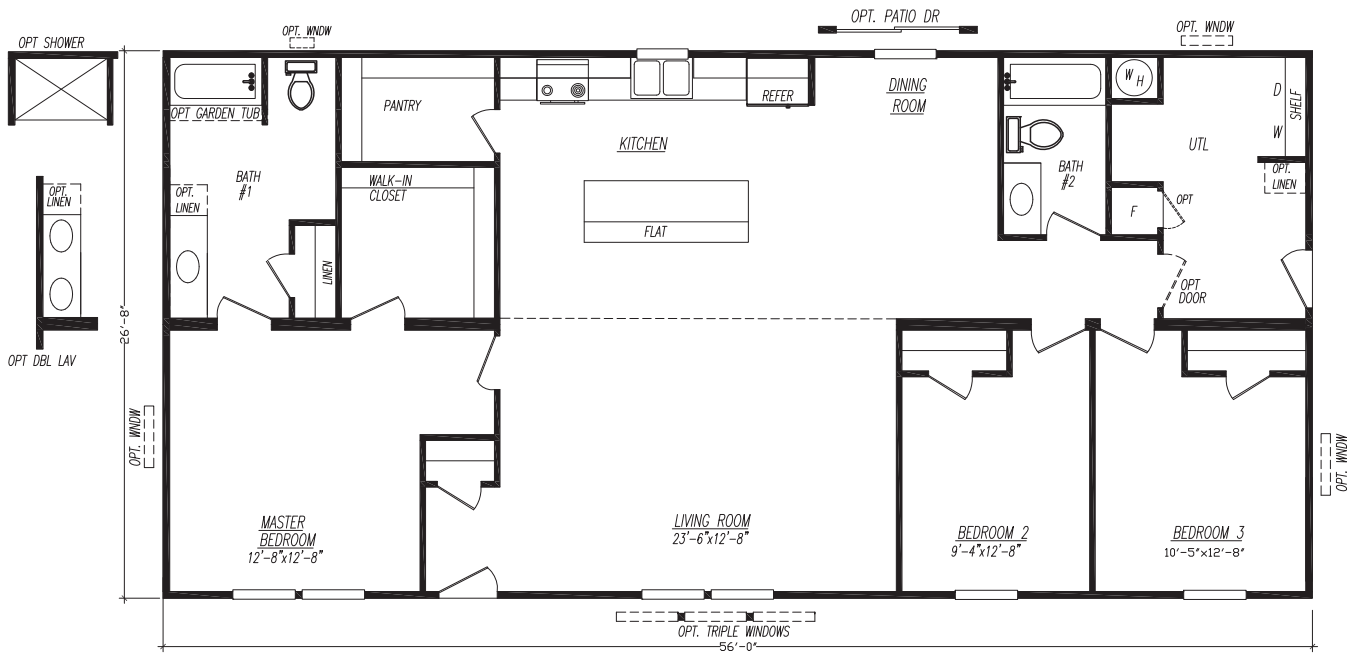
# Model 4483M-KH

3 Bedroom • 2 Bath • Floor Size 1,280 sq. ft.



# Model 4563T-KH

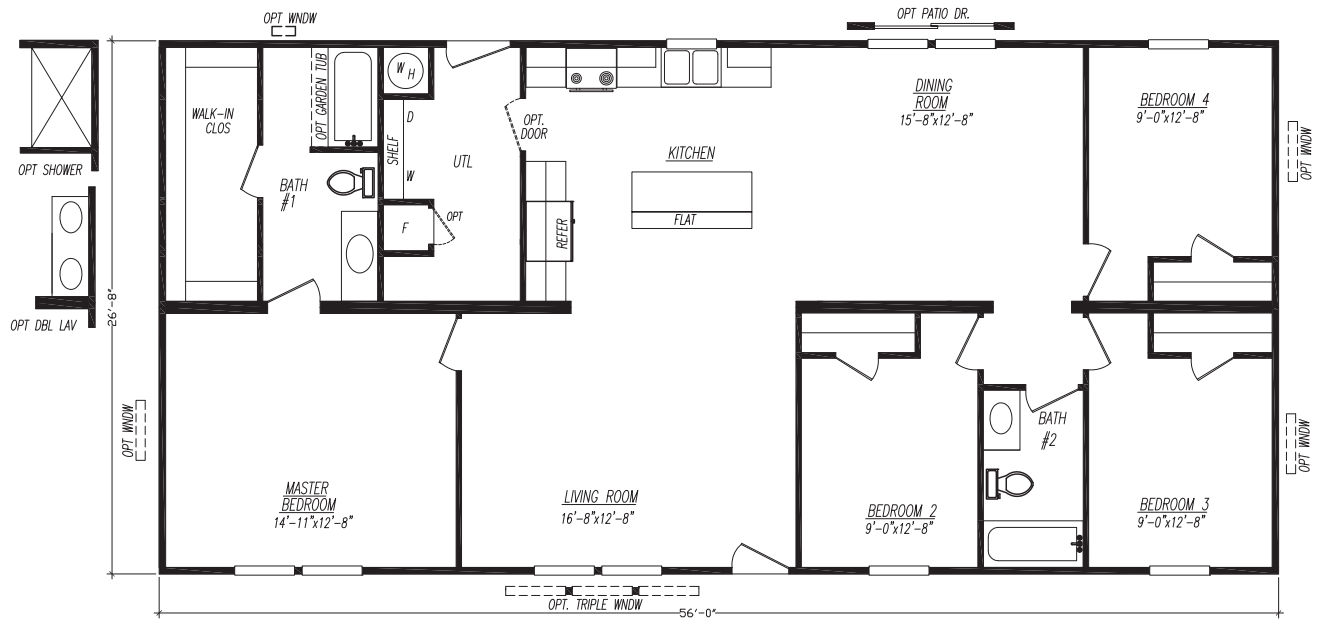
3 Bedroom • 2 Bath • Floor Size 1,494 sq. ft.





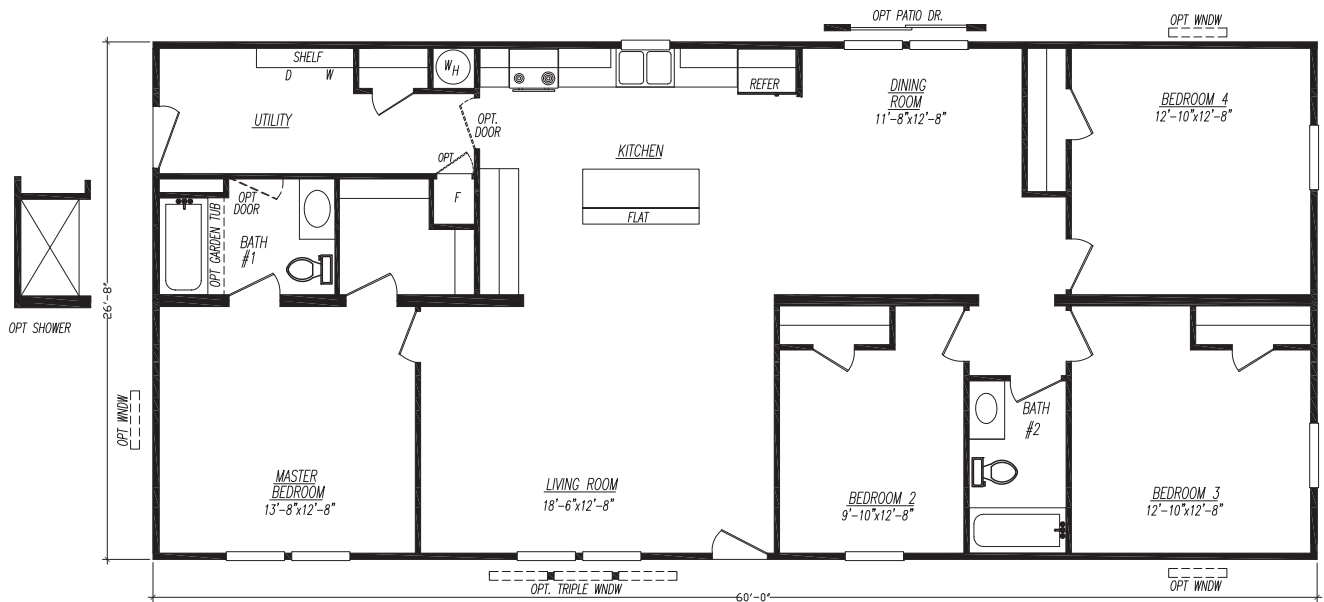
# Model 4564X-KH

4 Bedroom • 2 Bath • Floor Size 1,494 sq. ft.



# Model 4604A-KH

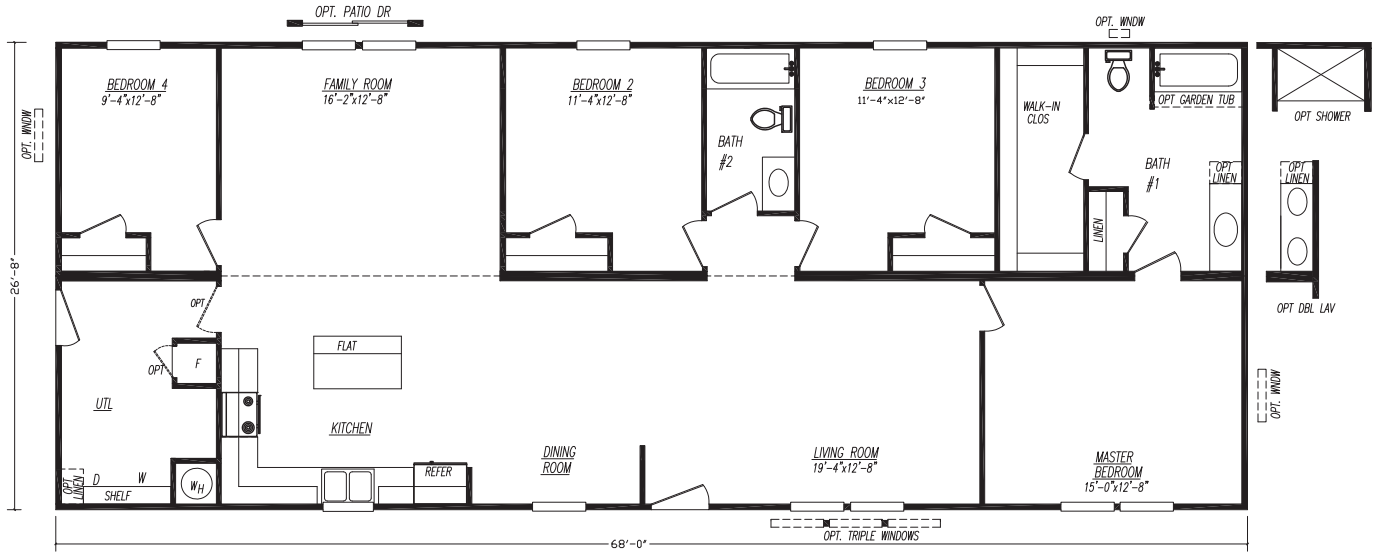
4 Bedroom • 2 Bath • Floor Size 1,600 sq. ft.





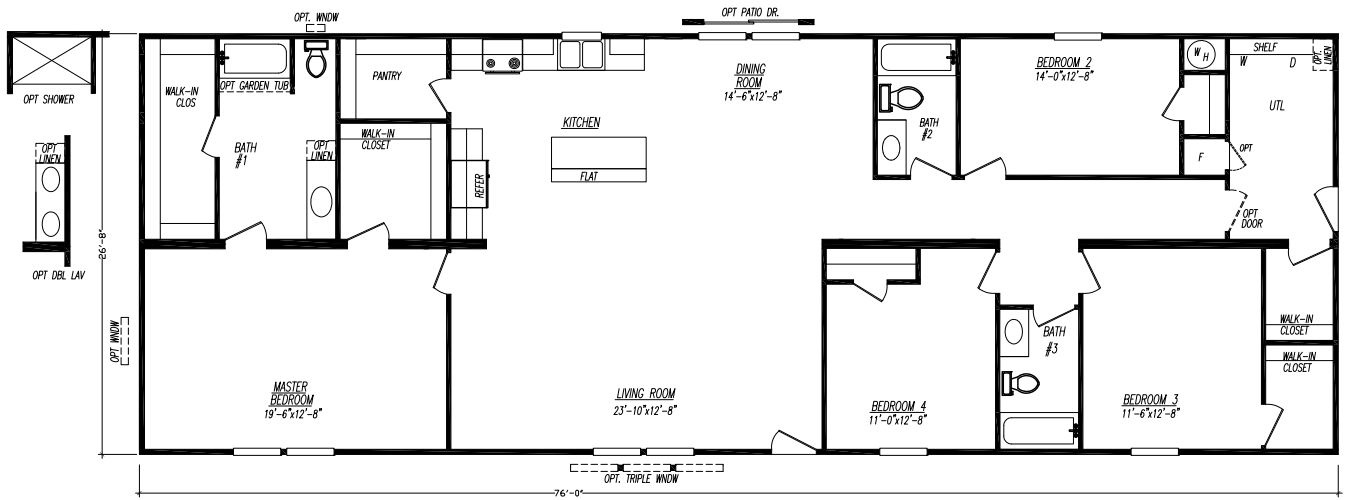
# Model 4684L-KH

4 Bedroom • 2 Bath • Floor Size 1,813 sq. ft.



# Model 4764H-KH

4 Bedroom • 3 Bath • Floor Size 2,027 sq. ft.



# Available Decor Selections

## Decor #1



## Decor #2





# Available Options

- Black Appliance Package #1
  - Gooseneck Faucet w/ Pulldown Sprayer, Microwave, Dishwasher, 18cf Over/Under Refrigerator & Coil Top Electric Range
- Black Appliance Package #5
  - Gooseneck Faucet w/ Pulldown Sprayer, Microwave, Dishwasher, 18cf Over/Under Refrigerator & Deluxe Gas Range
- Finished Base & Center Shelf w/ Fixed Overhead Shelf
- Solid Cabinet Doors
- Solid Cabinet Stiles
- Cabinet over Range
- Cabinet over Refrigerator
- 2" MDF Stile Cabinet Cove
- 3 Door Linen (where available)
- Overhead Cabinets above Washer & Dryer (24" tall)
- Optional Base & Overhead Cabinets (where available)
- Gooseneck Faucet w/ Pulldown Sprayer
- Black Dishwasher
- Black Microwave Over Range
- Black Deluxe Gas Range ilo Electric
- Garbage Disposal
- Add Icemaker to 18cf Refrigerator
- 1"x4" Laminate Backsplash Throughout
- Omit Standard Range
  - o Standard Electric Range Hookup
  - o Plumb for Future Gas Range
- Omit Standard Refrigerator
  - o Plumb for Future Icemaker
- Plumb & Wire for Future Dishwasher
- Wire for Future Microwave Over Range
- Gas Furnace w/ 100 AMP Service
  - o 200 AMP Service
- Upgrade Panel Box (200 AMP service only)
- 10 Wire Thermostat
- Digital Thermostat
- 40 Gallon Gas Water Heater ilo Electric
- Plumb for Future Gas Dryer ilo Electric
- Add Exterior Faucet
- Add Exterior Receptacle (with approval)
- Add Interior Receptacle (with approval)
- 40 AMP A/C Disconnect
- Ceiling Fan
- Wire & Brace for Flat Screen TV
- Access for TV Wiring
- TV Jack
- Phone Jack
- Media Jack
- 1pc Garden Tub / Shower (where available)
- 54" Shower Stall (where available)
- Oval China Sink w/ Single Lever Faucet
- Double Bowl Vanity (where available)
- Vanity Light above Bathroom Sink
- Towel Bar & Tissue Holders
- Omit Standard Seams in Ceiling
- Stomped Ceiling ilo Popcorn
- Beamless Mateline
- MDF Mateline Ceiling Beam
- 3" MDF Stile Cove & Casing
  - o Main Living Area
  - o Throughout Home
- 2" Plastic Blinds Throughout
- Add 25oz Carpet (per room)
  - o Lino Entry
- Upgrade Oaksid Siding
- Upgrade Compass Siding
- Add Shutters (per pair)
- Add Window Lineal (per window)
- Drop Starter Strip 3"
- Raise Starter Strip 5"
- Architectural Shingles ilo 3-Tab
- Full Dormer (sectional)
- Full Recessed Dormer (sectional)
  - o Shake Insert inside Recessed Dormer
- Clear Skies Exterior Hitch Treatment (single section)
- 38"x82" 4 Lite Front Door (no storm)
- 38"x82" 6 Lite Front Door (no storm)
- 34"x82" 9 Lite Rear Door (no storm)
- Full View Storm Door
- Self-Storing Storm Door
- Vinyl Sliding Glass Door (where available)
- Optional Window (where available)
- 14"x40" Privacy Bath Window (where available)
- Tape & Foam around Windows
- Add Interior Passage Door (where available)
- Single Lever Interior Door Handles
- White Metal Furnace Door
- Foundation Ready Chassis
- OSB Wrap w/ Housewrap
- 30# Roof Load
  - o Alternate Frame for 30# Roof Load
- Adjustable Outriggers (per set)
- 2x6 Wall w/ R-19 Insulation
- R-22 Floor Insulation
- R-33 Roof Insulation
- Reverse Aisle (single section)
- Mirror Image
- End to End Flip
- Mirror Image & End to End Flip



# Kalahari Series

## Standard Features

### Exterior

Thermal Zone III Construction  
Nominal 3/12 Roof Pitch  
R-28-11-11 Insulation  
(Additional Windows & Doors May Require Higher Insulation Values)  
Vinyl Siding  
1/4" Backer Board Wrap under Vinyl Siding  
3-Tab Fiberglass Shingles  
7/16" OSB Roof Sheathing  
Dead Bolt Locks at Front and Rear (Keyed Alike)  
Vinyl Single Hung Windows w/ Grids  
Foam All Exterior Windows  
38"x 82" R.O. 6 Panel Residential Front Door (No Storm)  
34"x 82" R.O. 6 Panel Residential Rear Door (No Storm)  
2x6 Floor Joists 16" O.C. (14' & 28' Wide)  
2x8 Floor Joists 16" O.C. (16' & 32' Wide)  
20 LB Roof Load  
2x4 Exterior Walls 16" O.C.  
Jelly Jar Light Fixtures at All Exterior Doors  
Full Length Chassis w/ Outriggers  
99.5" I-Beam Spread, Detachable Hitch

### Interior

Pre-Selected Interior Décor Choices  
Door Stop All 3 Sides  
94" Flat Ceilings  
Blown Textured Ceiling w/ Seams  
OSB Tongue & Groove Floor Decking  
Vinyl Wall Panels Throughout  
Flat Wrapped Moldings Throughout  
Vinyl Flooring Throughout  
Wire Closet Shelving  
3 Hinge Interior Doors

**Because of continuous product improvements, specifications are subject to change without notice or obligation.**

### Electrical, Plumbing & Heating

Smoke Detectors in Main Living Areas & All Bedrooms  
200 AMP Service, Electric Furnace  
40 Gallon Electric Water Heater  
Exterior Electrical Receptacle (FDS)  
Copper Wiring, PEX Plumbing  
Whole House Shut-off Valve Underneath Home  
Water Shut-off Valves (All Sinks & Commodes)  
Metal Heat Ducts  
GFI Receptacles in Kitchen and Baths  
6" LED Can Lights Throughout  
(Includes Living / Family Rooms)  
Plumb & Wire for Washer & Dryer  
Utility Shelf above Washer & Dryer

### Kitchen

Black Electric Coil Top Range  
Black 18cf Refrigerator  
Black 30" Power Range Hood  
30" Overhead Cabinets w/ Fixed Center Shelves  
Raised Panel MDF Wrapped Cabinet Doors & Stiles  
Concealed Cabinet Door Hinges  
(1) Bank of Drawers w/ Residential Rails & Guides  
Laminated Countertops  
Stainless Steel Kitchen Sink  
Shelf over Range & Refrigerator

### Bath

1pc Tub Shower w/ Anti-Scald Single Lever Faucet  
(Bath #1 and Additional Bathrooms)  
Laminated Countertops  
Mirror above Each Bathroom Sink  
Power Exhaust Fan in Bathroom(s)  
China "Water Saver" Commode in Bathroom(s)  
White Plastic Sink(s) w/ Dual Knob Faucet(s)

## ADVENTURE HOMES

[www.AdventureHomes.net](http://www.AdventureHomes.net)

1119 Fuller Drive, Garrett, IN 46738

877-510-1955



June  
2023