



Glen Arbor

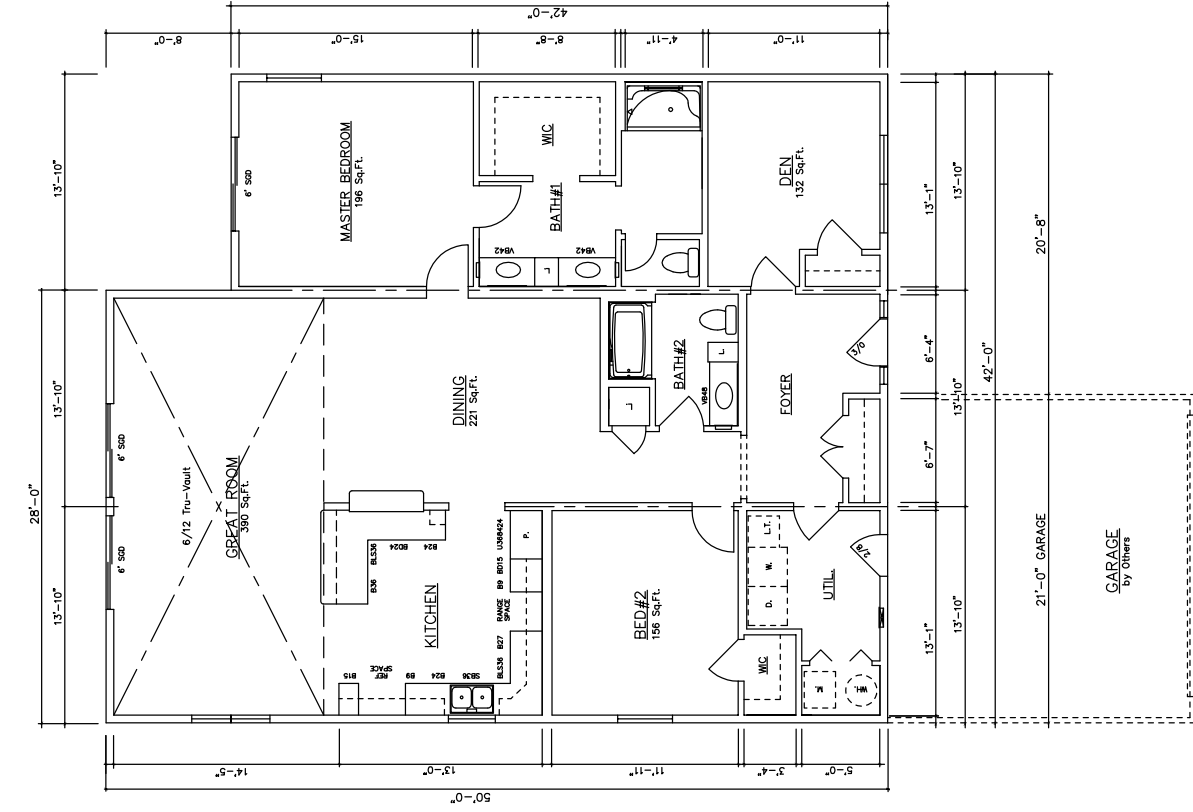
1,988 – 2,533 sq. ft.

*Glen Arbor • Glen Arbor II • Glen Arbor III
Glen Arbor IV • Glen Arbor V • Glen Arbor VI
Grand Marais • Grand Marais II*

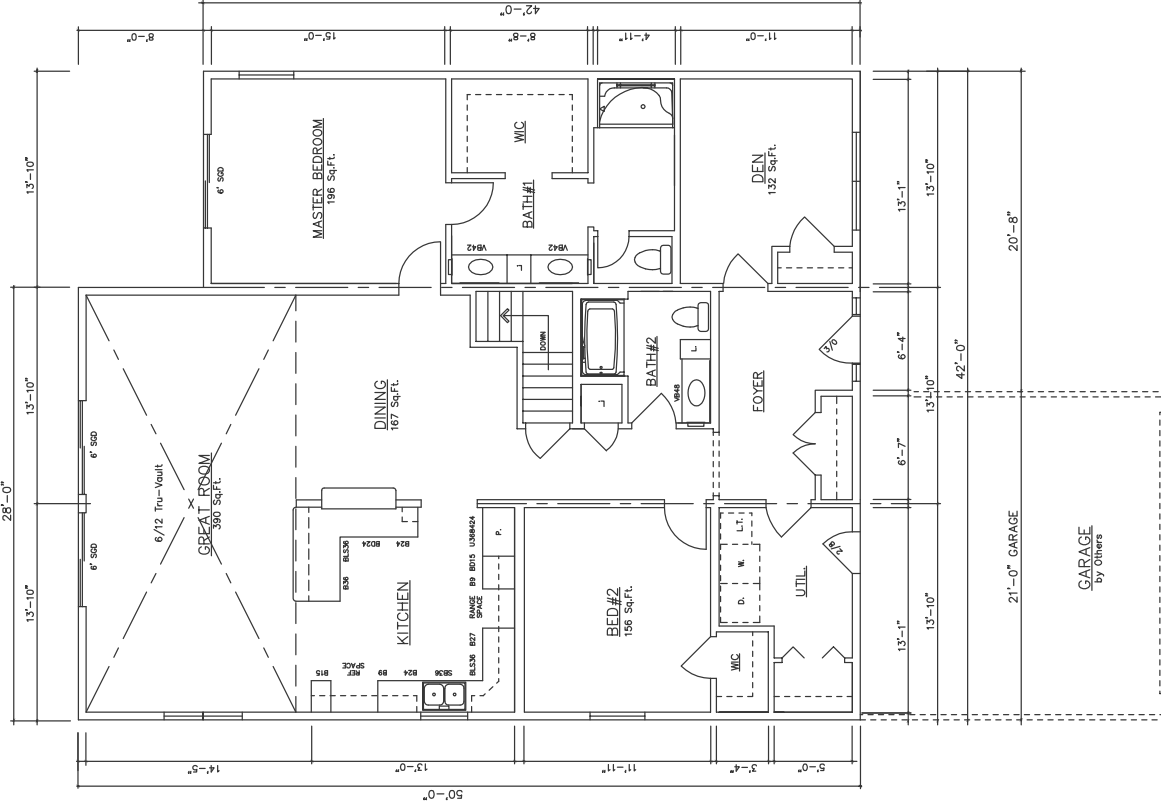


General Housing Corporation
Custom Crafted Construction

Glen Arbor



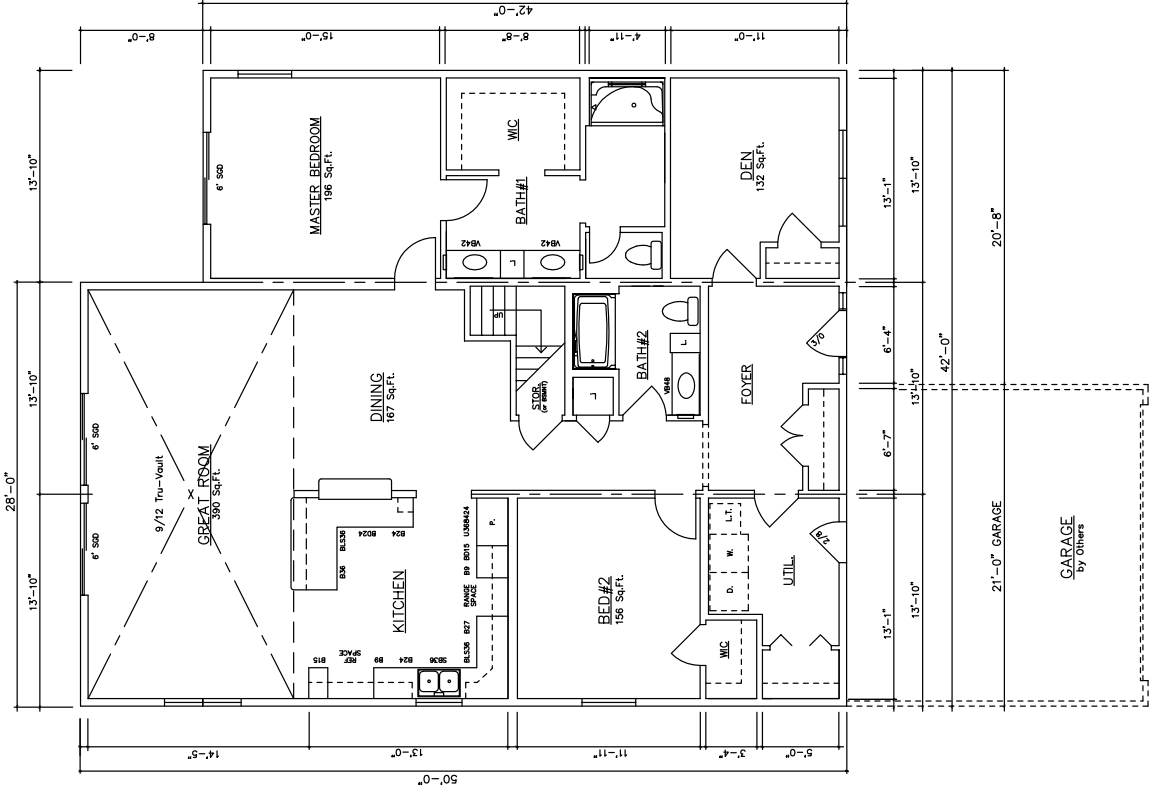
Glen Arbor 14156 (FLG - Crawl) 1,988 Sq. Ft.



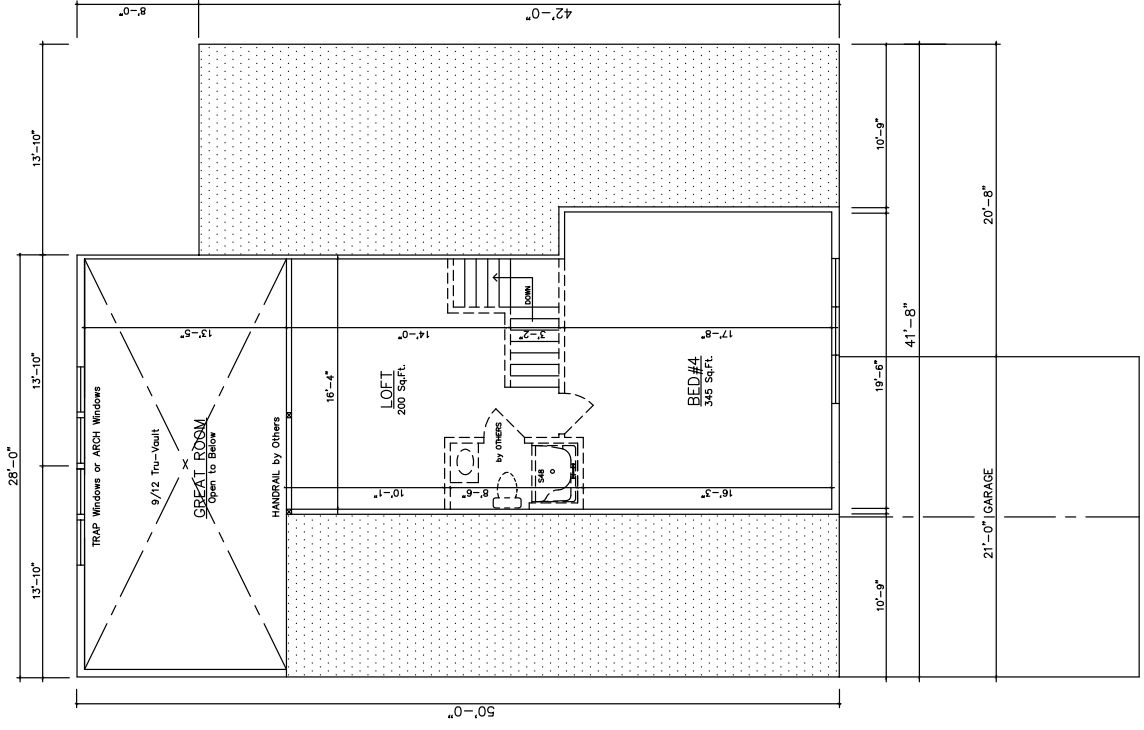
Glen Arbor 14158 (FLG - Basement) 1,988 Sq. Ft.

Glen Arbor II

2,533 Sq. Ft. Total

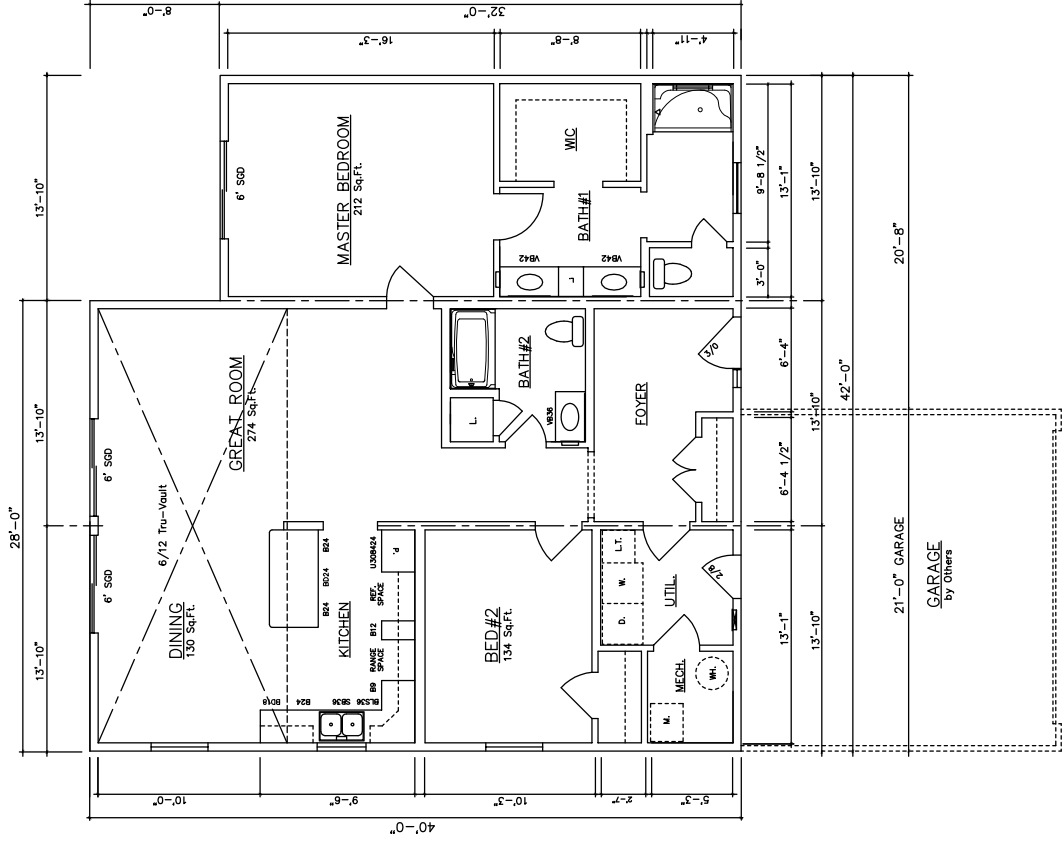


1st Floor – Glen Arbor II 1,988 Sq. Ft.
14160 (Crawlspace) 14162 (Basement)

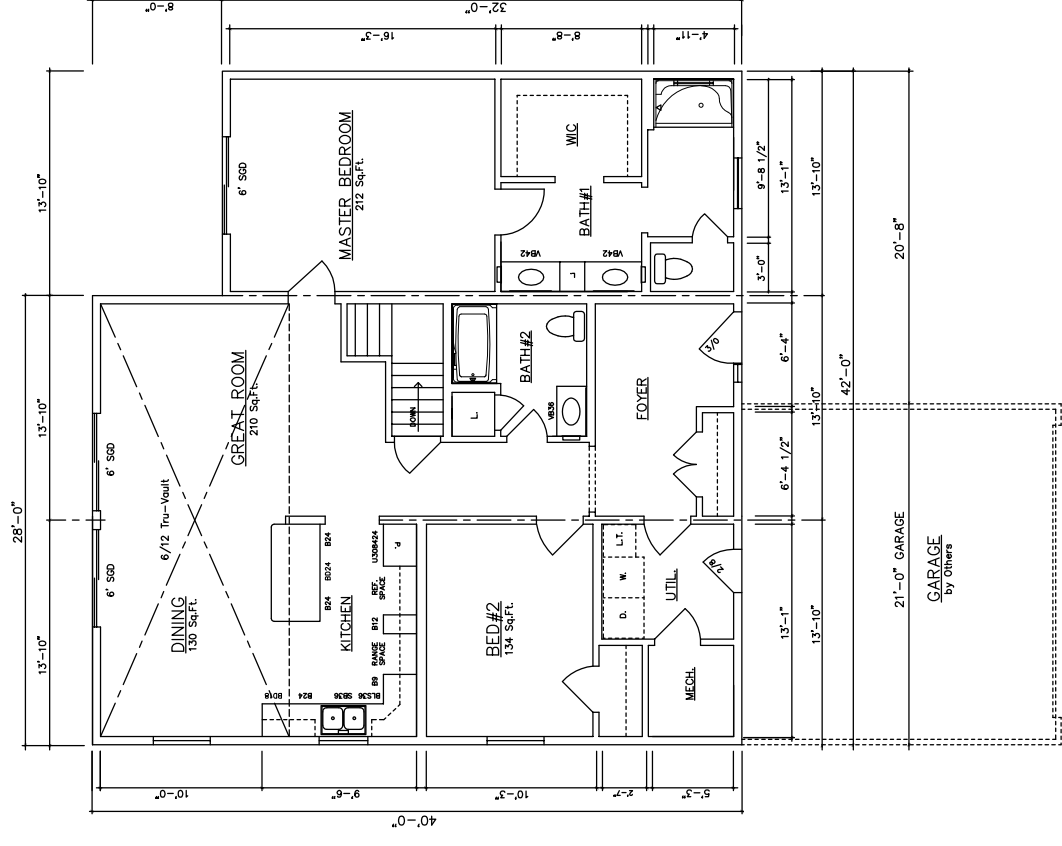


2nd Floor – Glen Arbor II 545 Sq. Ft

Glen Arbor III



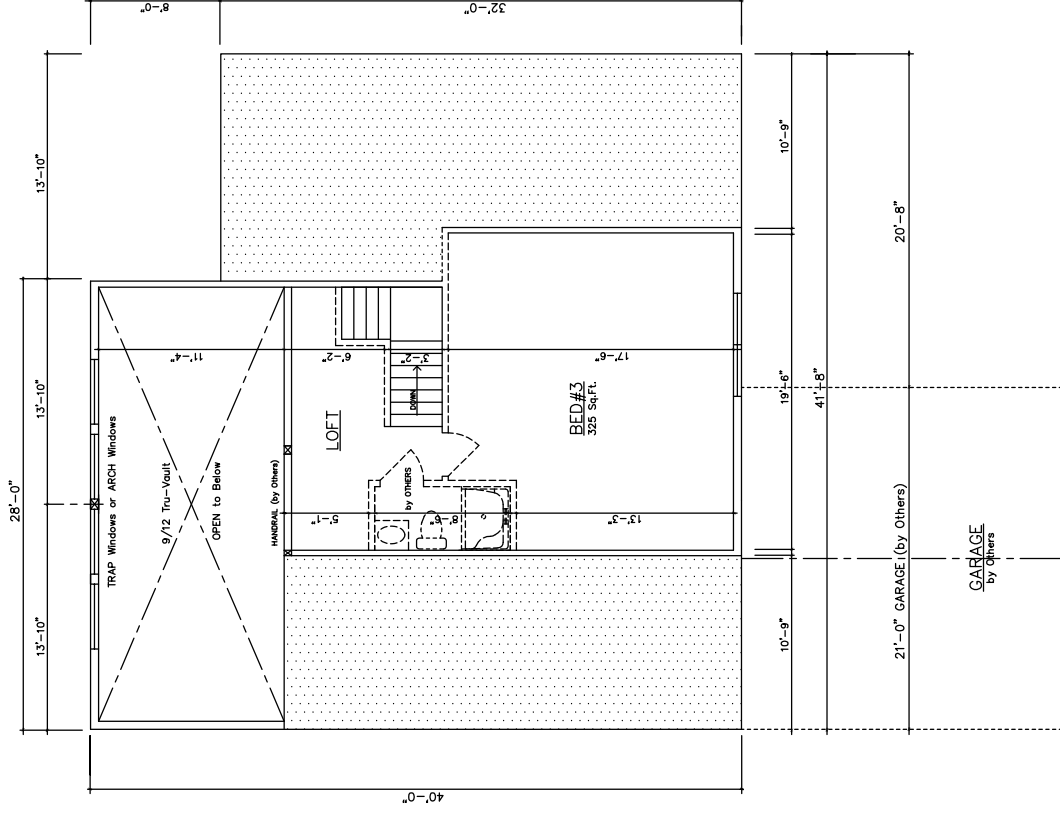
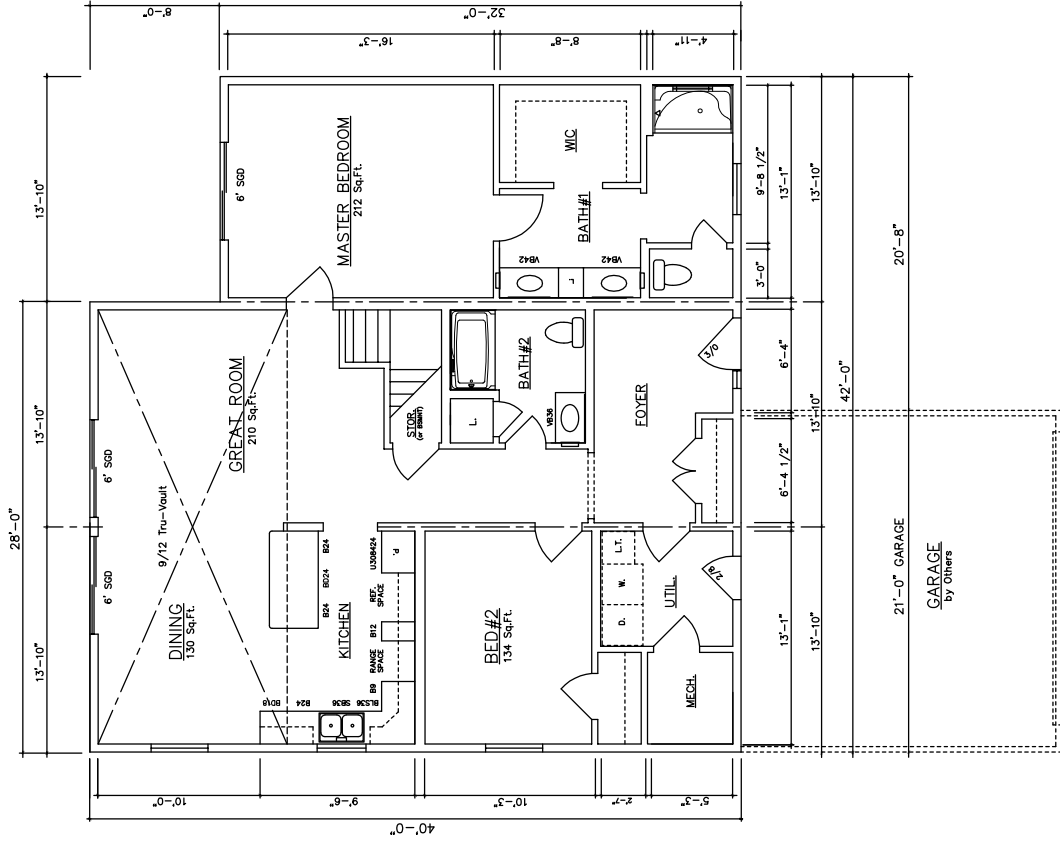
Glen Arbor III 14200 (Crawl) 1,568 Sq. Ft.



Glen Arbor III 14202 (Basement) 1,568 Sq. Ft.

Glen Arbor IV

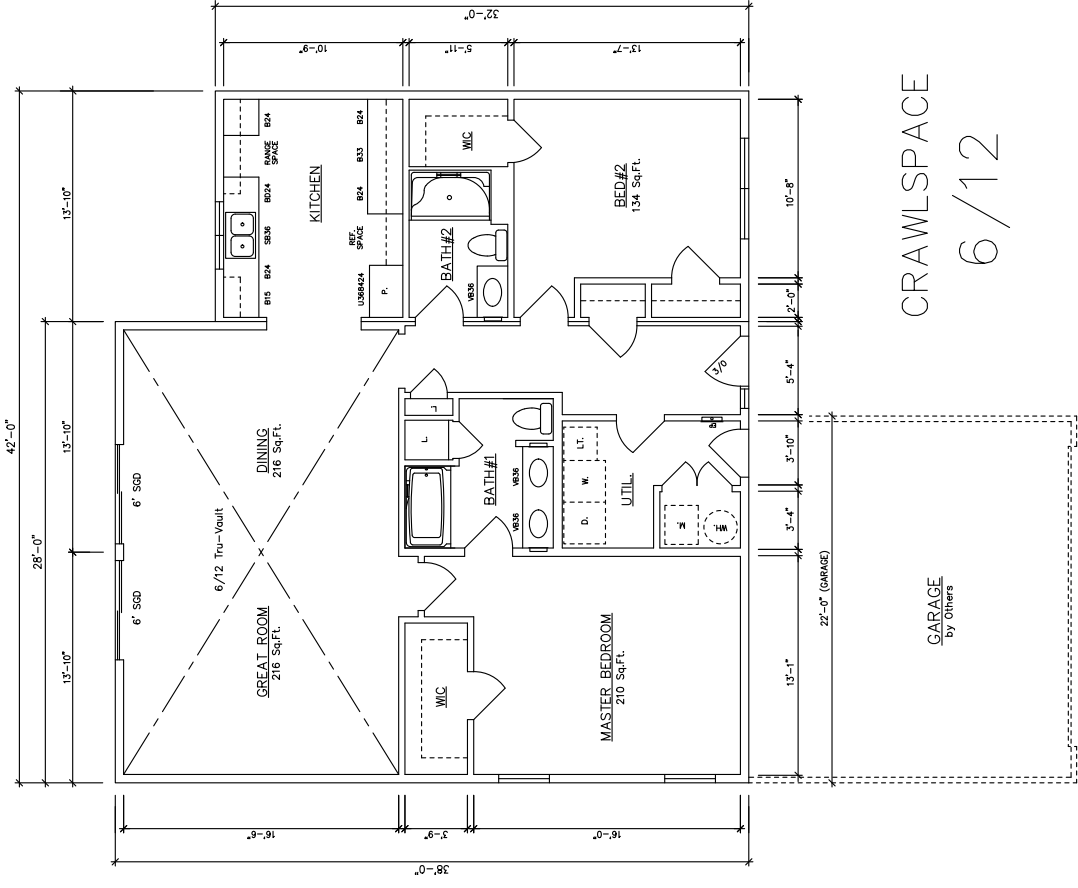
2,088 Sq. Ft. Total



1st Floor – Glen Arbor IV 1,568 Sq. Ft.
14204 (Crawlspace) 14206 (Basement)

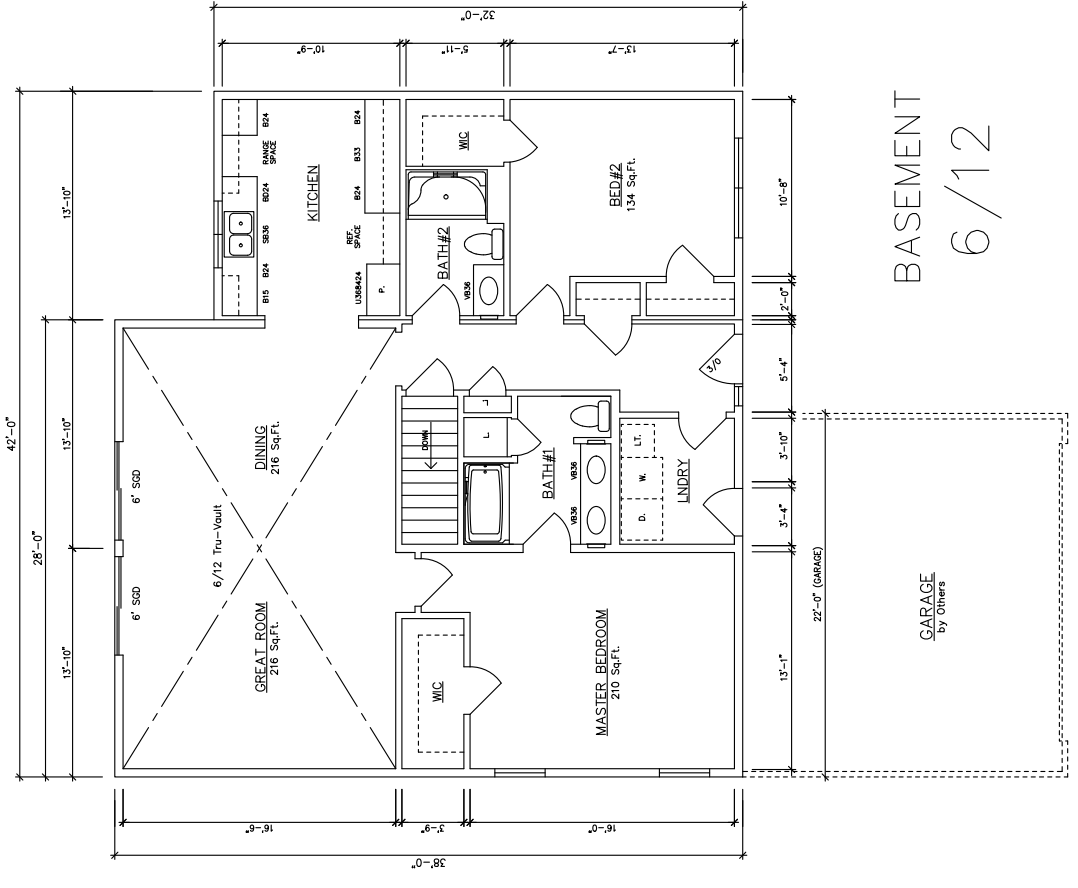
2nd Floor – Glen Arbor IV 520 Sq. Ft.

Glen Arbor V



CRAWLSPACE
6/12

Glen Arbor V 14208 (Crawl) 1,512 Sq. Ft.

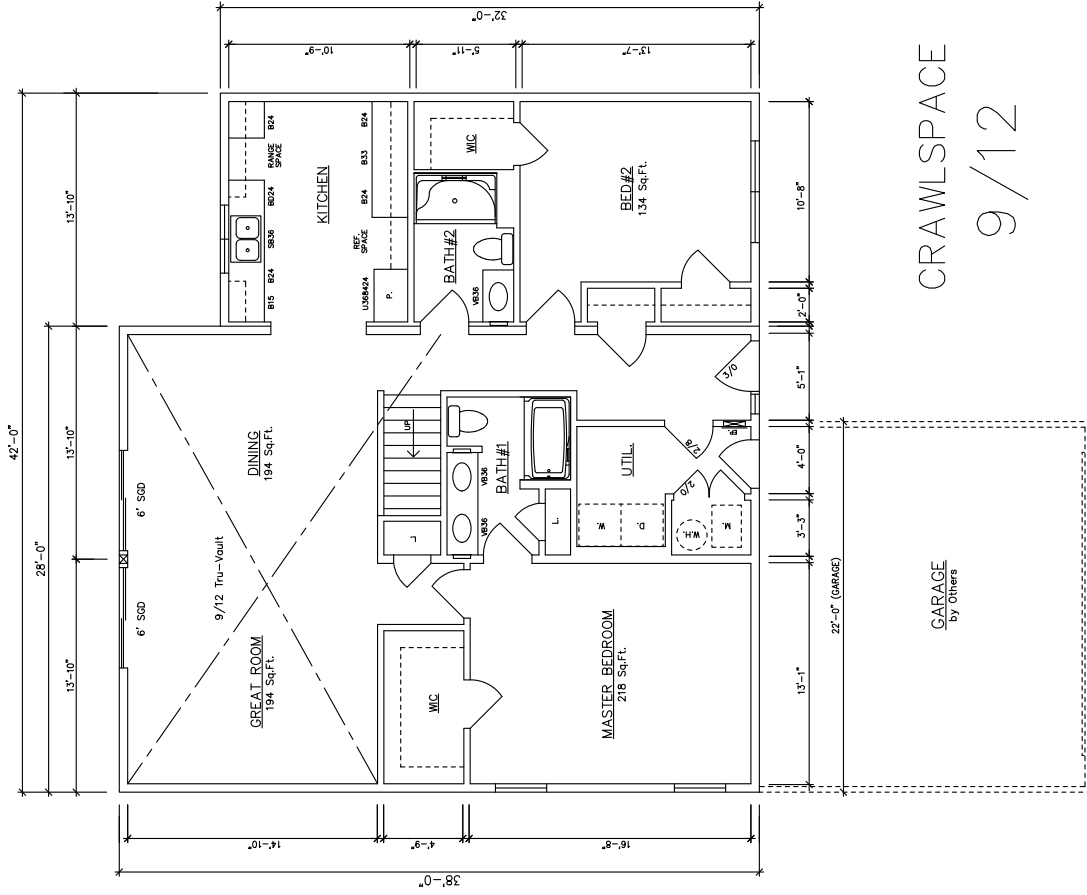


BASEMENT
6/12

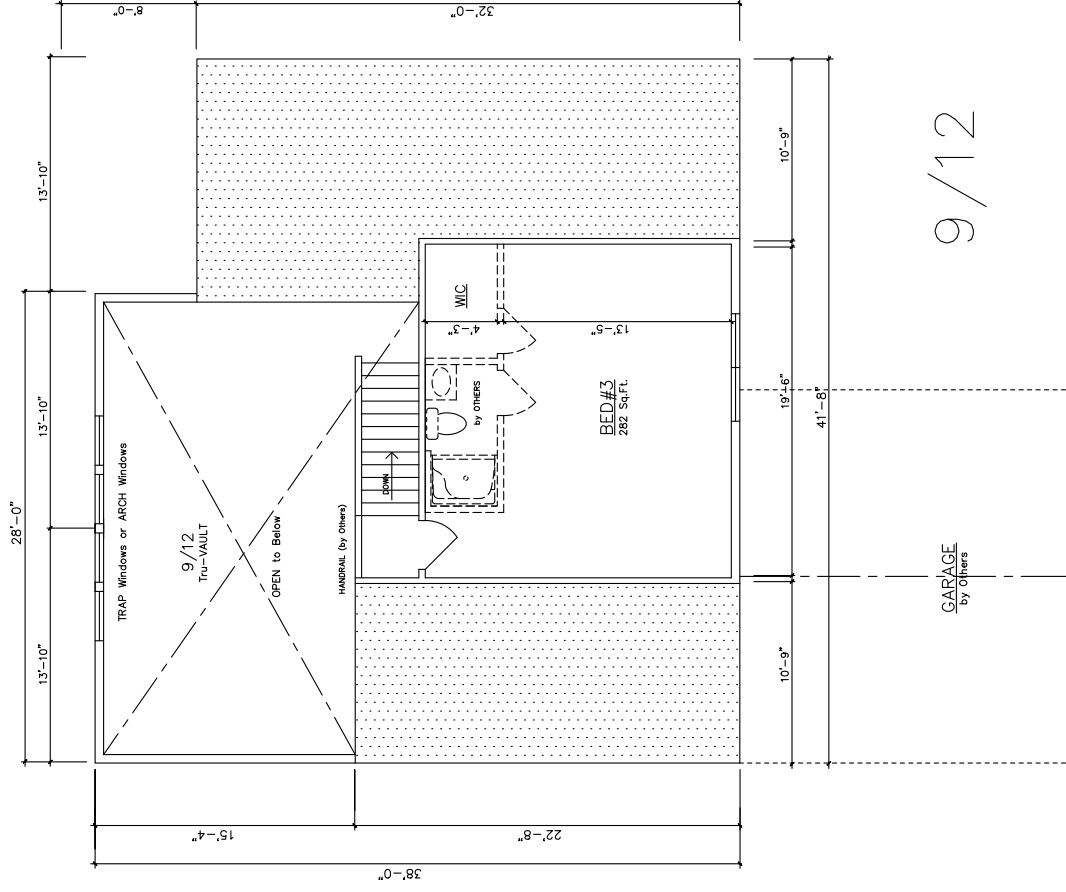
Glen Arbor V 14210 (Basement) 1,512 Sq. Ft.

Glen Arbor VI

1,870 Sq. Ft. Total



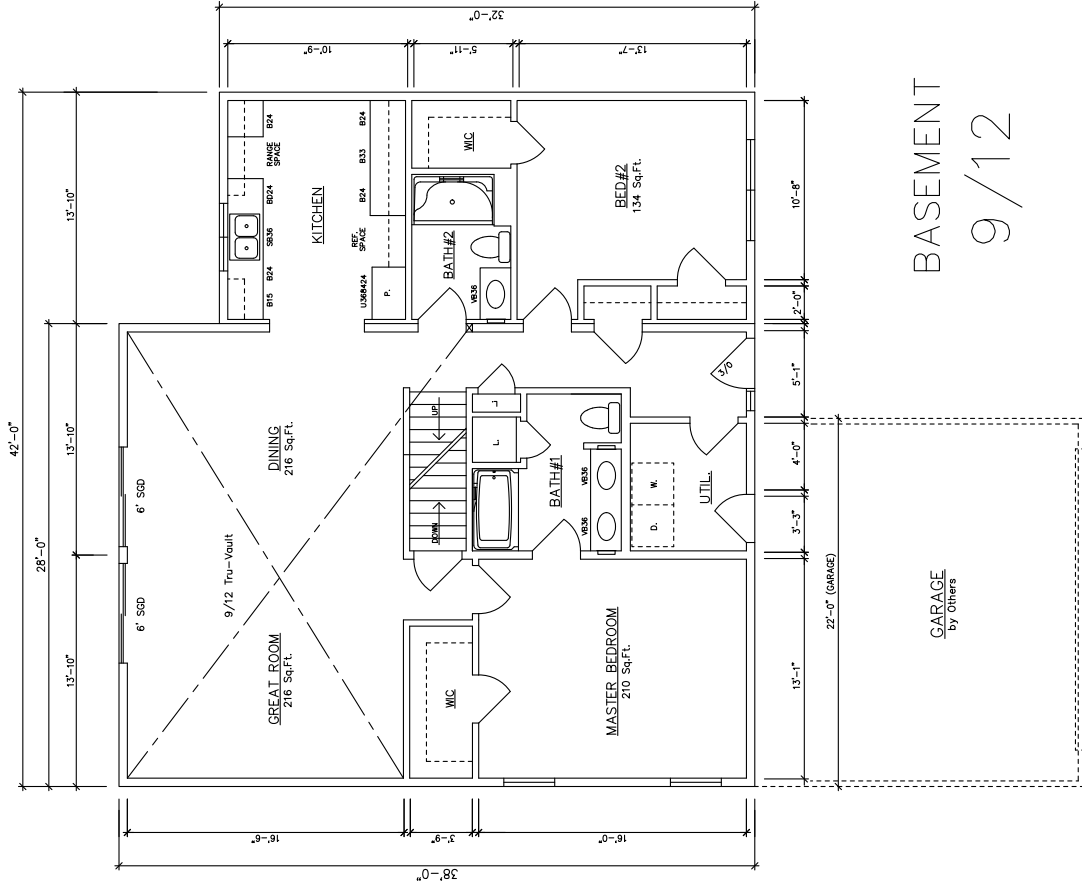
1st Floor – Glen Arbor VI 1,512 Sq. Ft.
 14212 (Crawlspace)



2nd Floor – Glen Arbor VI 358 Sq. Ft.

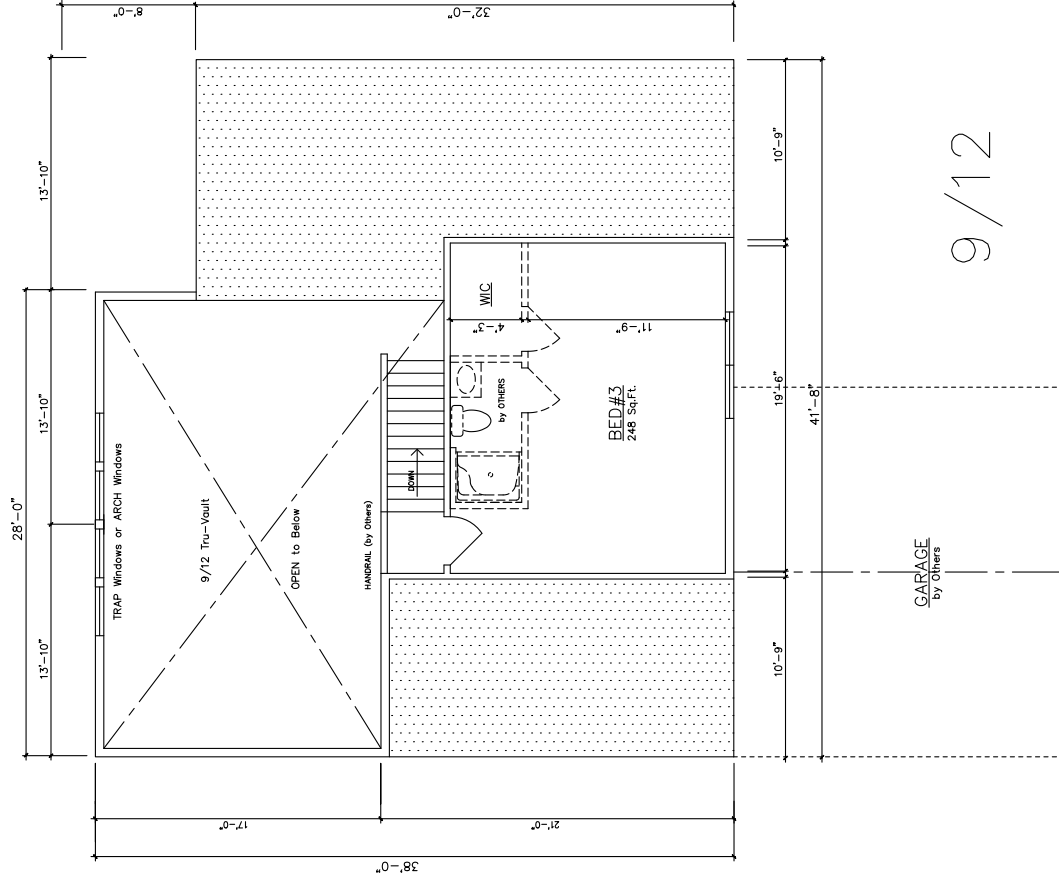
Glen Arbor VI

1,870 Sq. Ft. Total



BASEMENT
9/12

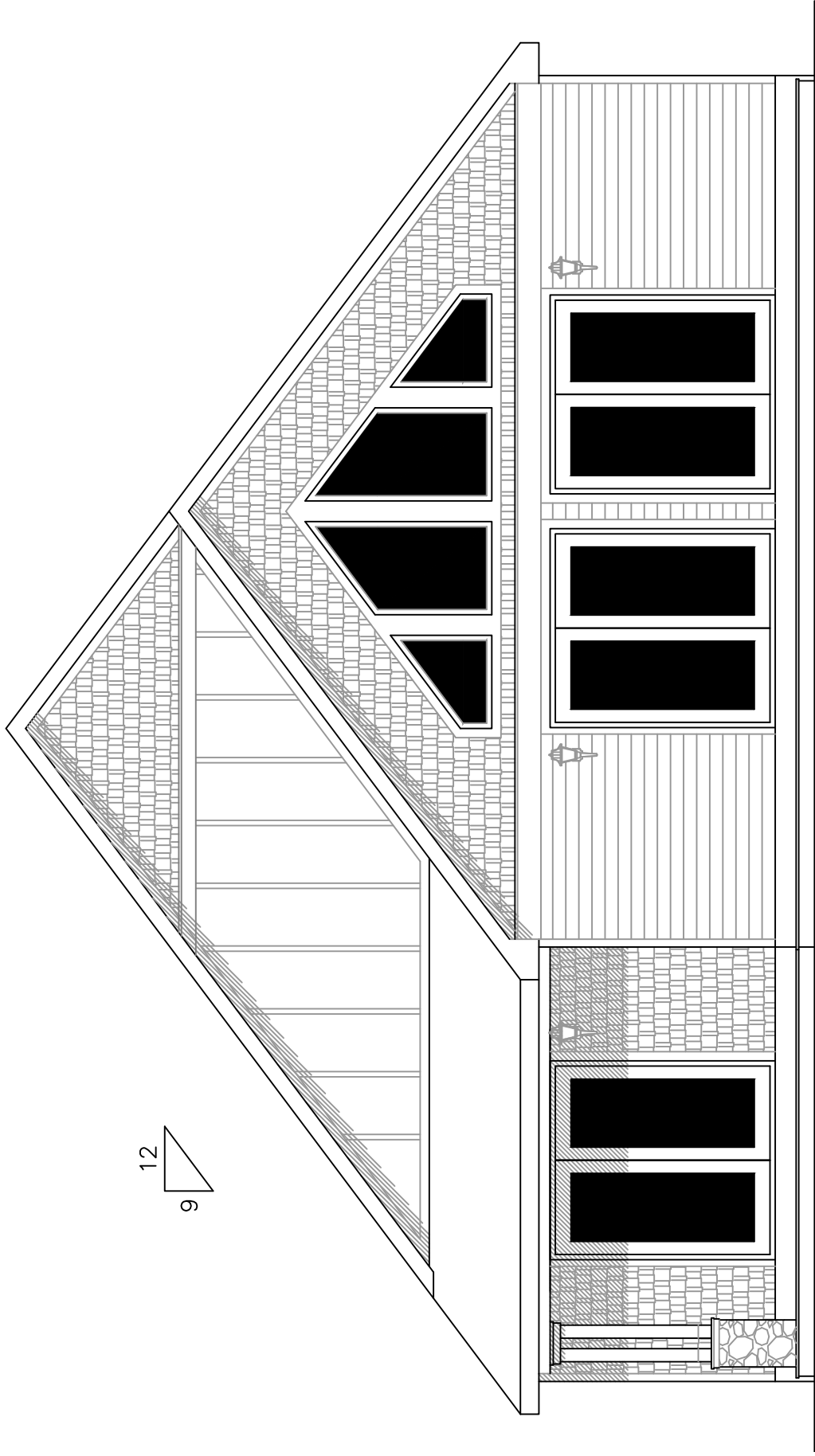
1st Floor – Glen Arbor VI 1,512 Sq. Ft.
 14214 (Basement)



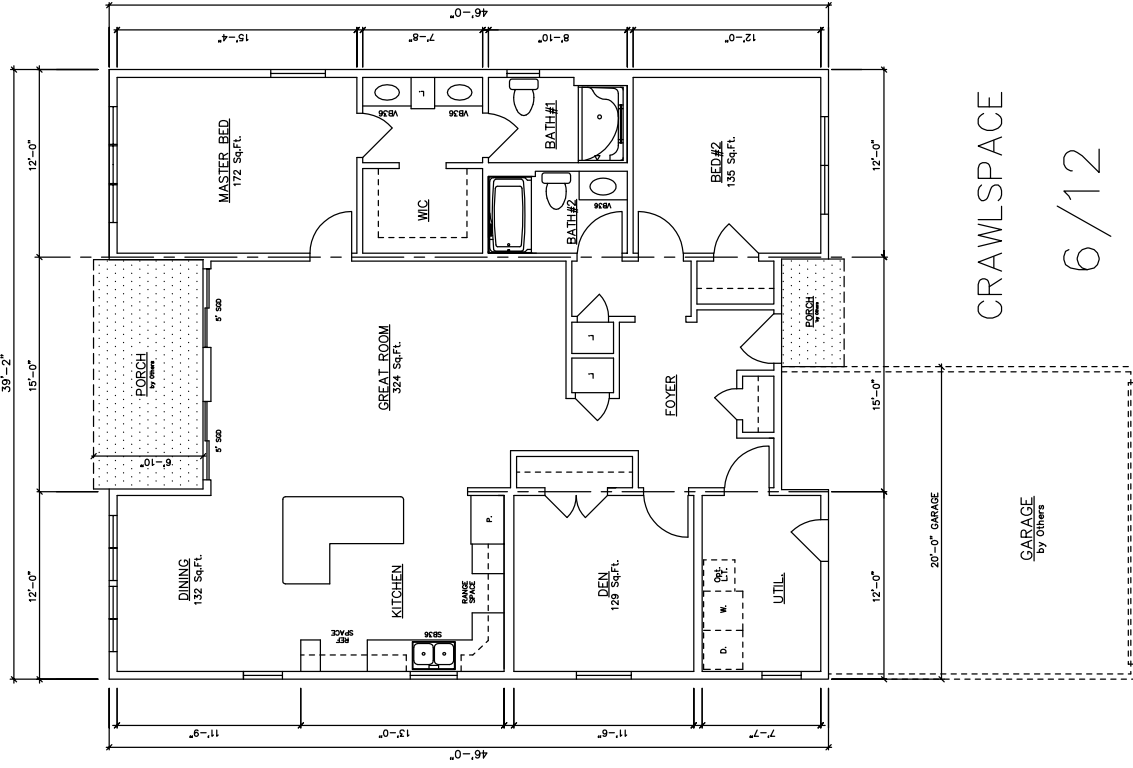
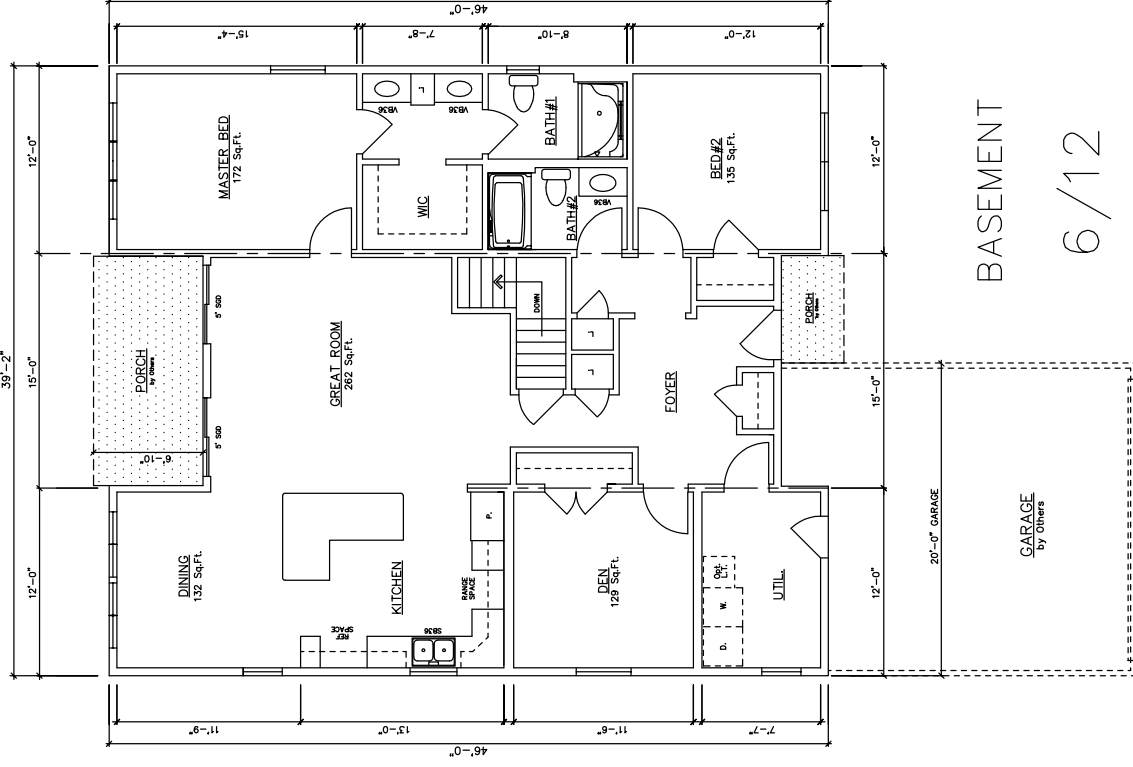
9/12

2nd Floor – Glen Arbor VI 358 Sq. Ft

Rear 9/12 Glen Arbor Trap



Grand Marais

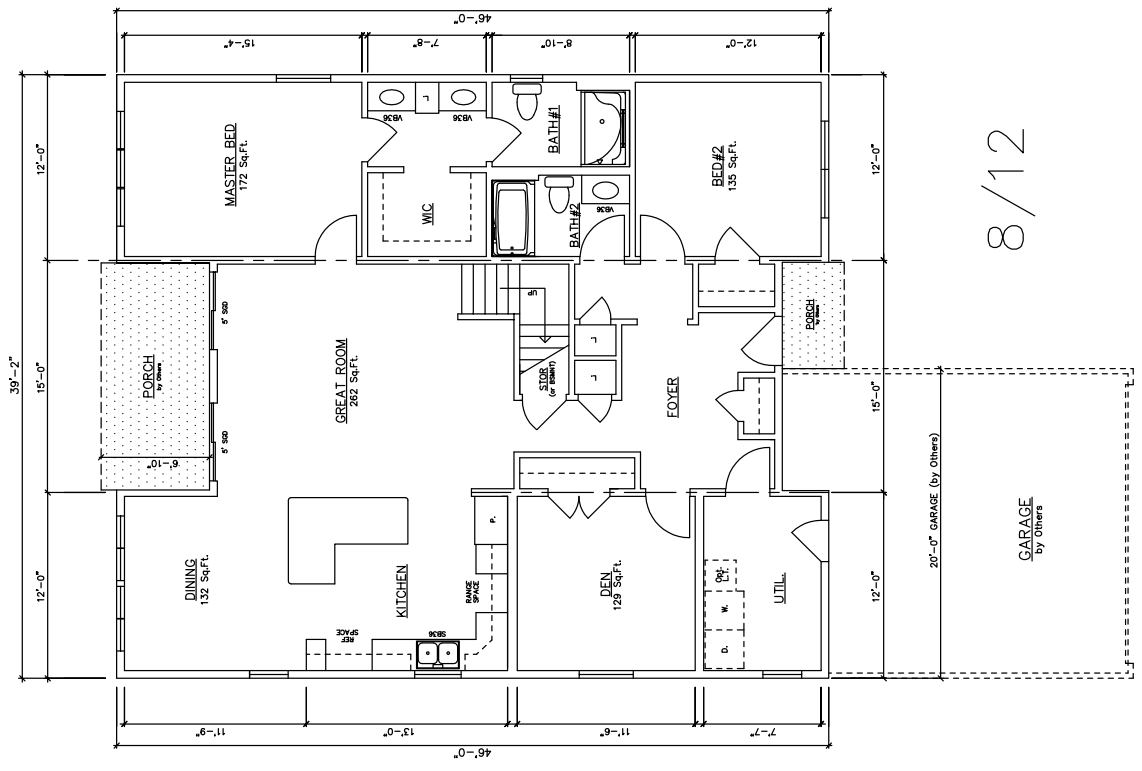


Grand Marais 14166 (Basement) 1,658 Sq. Ft.

Grand Marais 14164 (Crawl) 1,658 Sq. Ft.

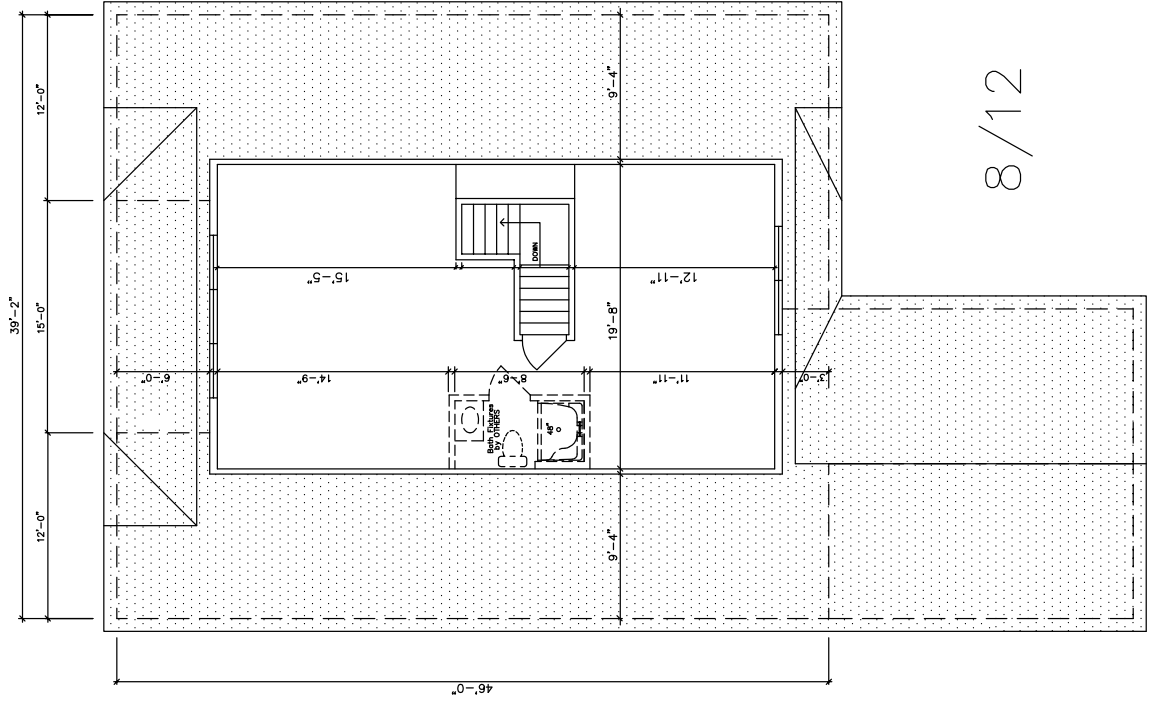
Grand Marais II

2,388 Sq. Ft. Total



8/12

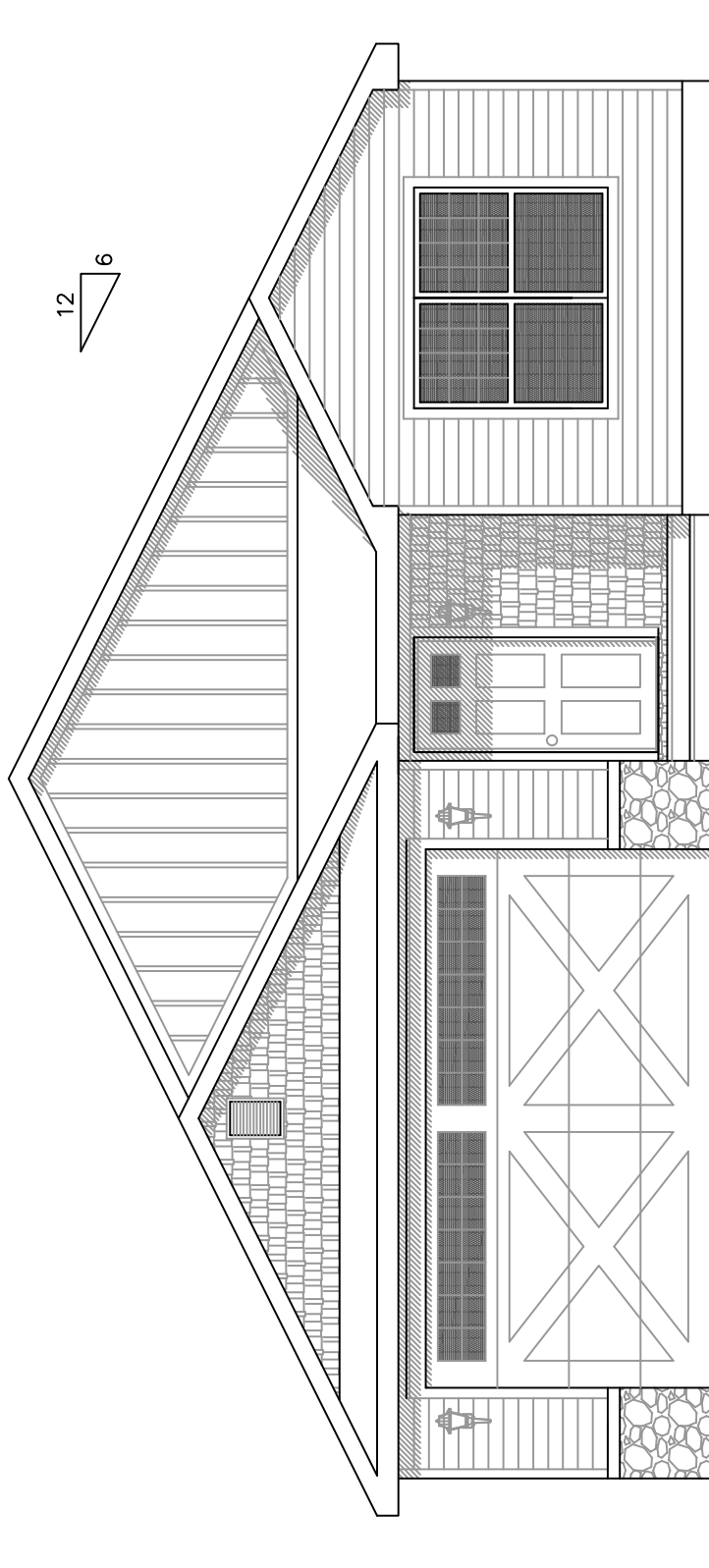
1st Floor – Grand Marais II 1,658 Sq. Ft.
14168 (Crawlspace) 14170 (Basement)



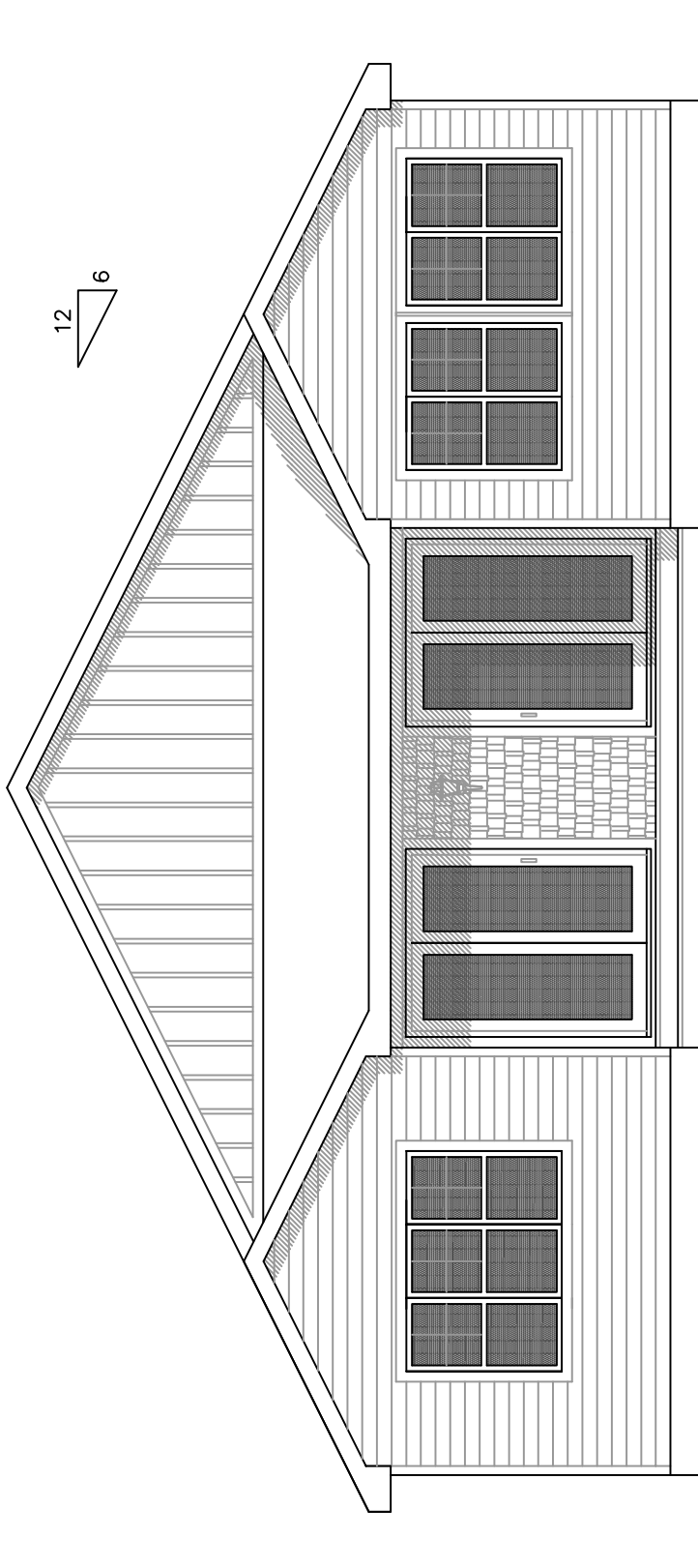
8/12

2nd Floor – Grand Marais II 730 Sq. Ft

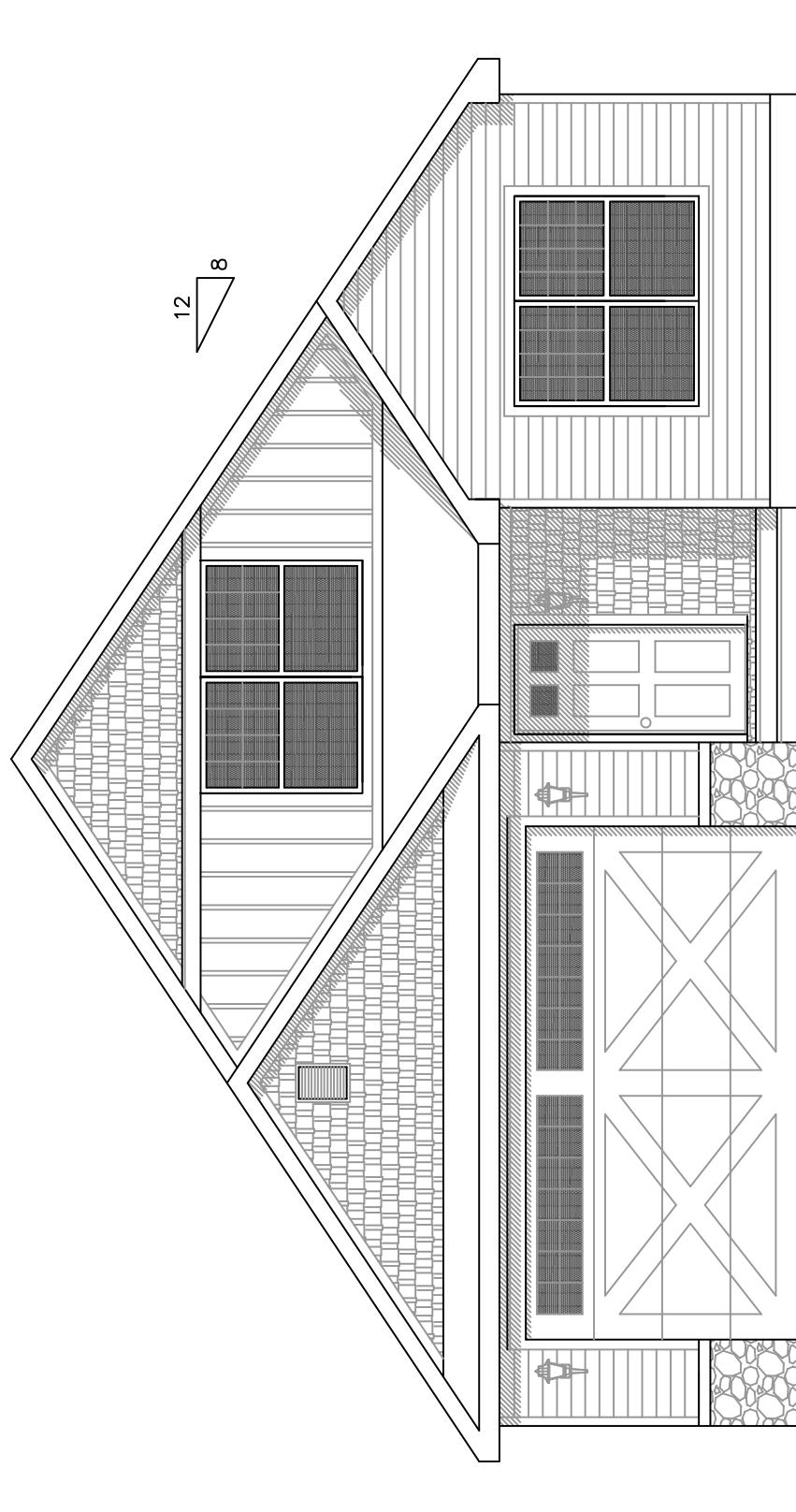
Front 6/12 Grand Marais



Rear 6/12 Grand Marais

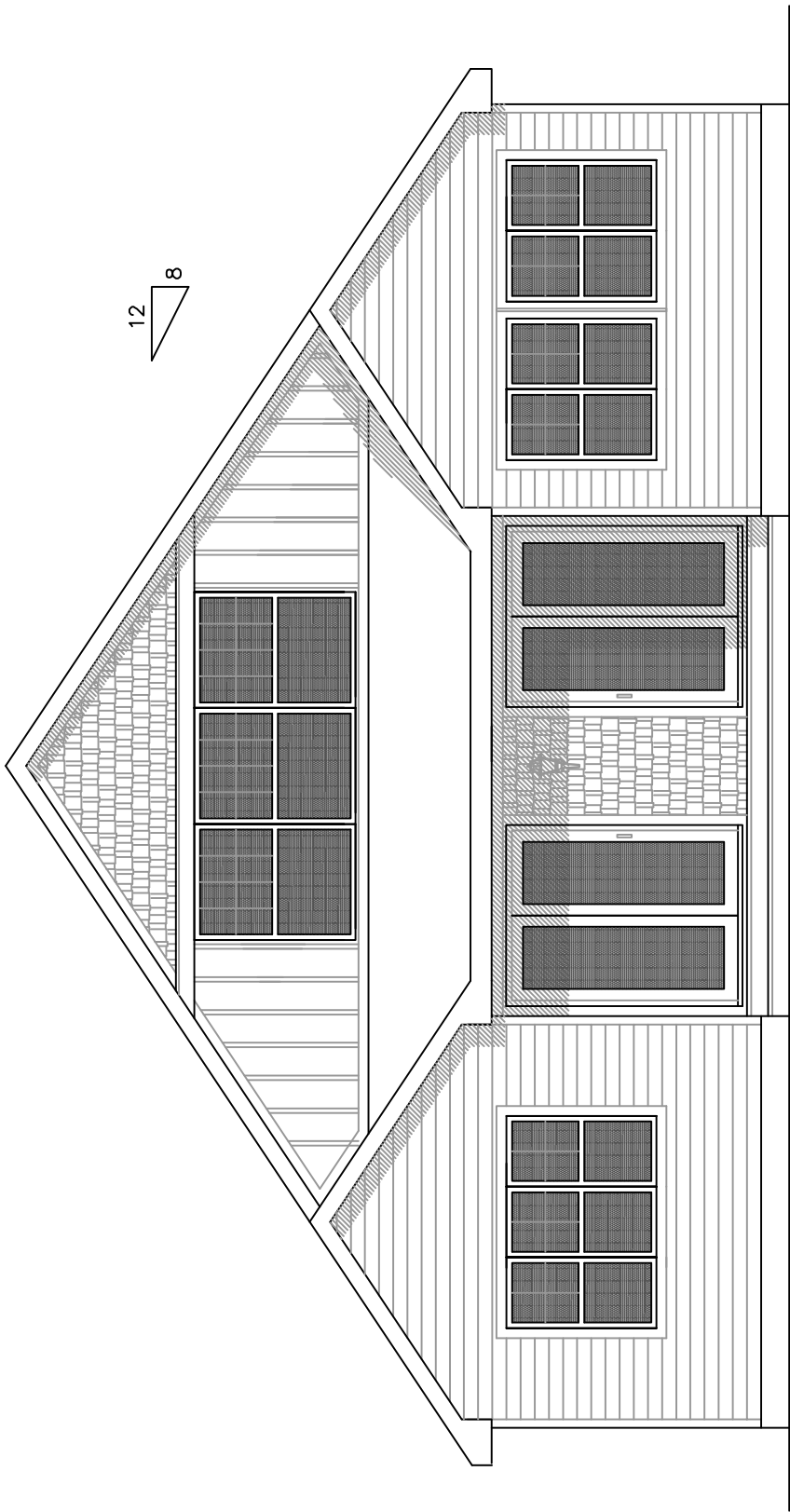


Front *8/12 Grand Marais*



Rear

8/12 Grand Marais





General Housing Corporation

Custom Crafted Construction

General Housing Corporation

4650 E. Wilder Road
Bay City, MI 48706

Phone (800) 351-3664

(989) 684-8078

Fax (989) 684-2914

www.genhouse.com