

THE *Residence*

2023

MODULAR HOMES



MODULAR HOMES

THE Residence

STANDARD FEATURES

INTERIOR

25 OZ. SHAW CARPET WITH 5# REBOND PAD & TACK STRIP
8' FLAT CEILINGS THROUGHOUT
STIPPLE CEILING FINISH
FINISHED CEILING JOINTS
1/2" DRYWALL THROUGHOUT
BUILDER GRADE PRIMER THROUGHOUT
"CLOSET MAID" VENTILATED WIRE SHELVING IN CLOSETS
LED RECESSED CAN LIGHTS THROUGHOUT
MDF 2" DOOR & WINDOW CASING AND 3" BASE TRIM
2-PANEL WHITE INTERIOR DOORS
32" INTERIOR DOORS WHERE APPLICABLE

KITCHEN

30" KITCHEN HARDWOOD CABINETS W/CROWN
LC WRAPPED CABINET STILES
CONCEALED EUROPEAN STYLE COUNTER-SUNK HINGES
3/4" ADJUSTABLE SHELVES IN OVERHEAD CABINETS
8" STAINLESS STEEL DOUBLE BOWL KITCHEN SINK
PFISTER METAL FAUCETS
FRIGIDAIRE APPLIANCES
30" FREE-STANDING ELECTRIC RANGE
18 CU FT FROST FREE REFRIGERATOR W/ICEMAKER
4" LAMINATE BACKSPLASH
BANK OF DRAWERS
DRAWER OVER DOOR CONSTRUCTION
GFCI PROTECTED RECEPTACLES
CAN LIGHTS THROUGHOUT - VARIES BY PRINT

BATHS

60" FIBERGLASS TUB/SHOWER IN PRIMARY BATH & BATH 2
HIGH PRESSURE LAMINATED COUNTERTOPS & BACKSPLASH
W/MICROBAN ANTIMICROBIAL TECHNOLOGY
PORCELAIN COMMODOES
SQUARE PORCELAIN LAVS
LIGHTED POWER EXHAUST FANS
GFCI PROTECTED RECEPTACLES
36" TALL VANITIES IN BOTH BATHS
PFISTER METAL FAUCETS
BANK OF DRAWERS IN PRIMARY BATH

EXTERIOR

NOMINAL 3/12 ROOF PITCH
25 YEAR 3 TAB FIBERGLASS SHINGLES
METAL FACIA
VINYL VENTED SOFFIT
36" 6-PANEL FRONT DOOR W/DEADBOLT
36" 6-PANEL REAR DOOR W/DEADBOLT

EXTERIOR - continued

EXTERIOR LIGHT AT FRONT & REAR DOOR
4 1/2" DUTCH LAP VINYL SIDING
(2) EXTERIOR GFI RECEPTACLES
(2) EXTERIOR FROST FREE FAUCETS
LOW E VINYL WINDOWS W/3 OVER CLEAR GRIDS
15" SHUTTERS (FDS)

UTILITIES

200 AMP 40/40 SERVICE PANEL
CARRIER ELECTRIC FURNACE
ECOBEE 3 WIFI SMART THERMOSTAT
40 GALLON ELECTRIC WATER HEATER
WATER HEATER PAN WITH EXTERIOR DRAIN
PEX PLUMBING
WIRE & PLUMB FOR WASHER
WIRE & VENT FOR DRYER
RECESSED WHOLE HOUSE WATER SHUT OFF
WATER SHUT OFFS THROUGHOUT
GFI PROTECTED RECEPTACLES IN KITCHEN AND BATHS
FURNACE CLOSE-OFF DOOR
SMOKE DETECTORS
CONDUIT DROP FOR A/C

CONSTRUCTION

T&G OSB FLOOR DECKING GLUED & FASTENED
2" X 6" EXTERIOR WALLS
RIDGE VENT ROOF VENTING
LINKED SMOKE DETECTORS W/BATTERY BACK-UP IN MAIN
LIVING AREA & ALL BEDROOMS
7/16" OSB EXTERIOR SHEATHING W/WINDWRAP
KWIKSET INTERIOR & EXTERIOR DOOR KNOBS
W/MICROBAN ANTIMICROBIAL TECHNOLOGY
SMOKE/CARBON MONOXIDE DETECTOR
2" X 10" FLOOR JOISTS - 16" O.C.
R-21 WALL INSULATION
R-49 ROOF INSULATION
FIBERGLASS HEAT DUCTS
2" X 4" INTERIOR WALLS
2" X 4" MATELINE WALL
VINYL ARGON GAS WINDOWS
METAL CROSS BRIDGING
30# ROOF LOAD
* WISCONSIN HAS NO PLUMBING

MODULAR HOMES

THE
Residence

INDEX

NAME	MODEL	SIZE	SQ. FT.	BEDROOMS	BATHS	PAGE
Cottonwood Ln	4428-MS005	44x28	1188	3	2	4
Spring Meadow	4828-MS007	48x28	1296	3	2	5
Somerset Dr	5228-MS012	52x28	1404	3	2	6
Center St	5228-MS014	52x28	1404	3	2	7
Elm St	5628-MS018	56x28	1512	3	2	8
Hill St	5628-MS020	56x28	1512	3	2	9
Quiet Harbor	5628-MS046	56x28	1422	3	2	10
Michigan Ave	6028-MS026	60x28	1620	3	2	11
Tulip Blvd	6028-MS047	60x28	1620	3	2	12
Tompkins Blvd	6428-MS029	64x28	1728	3	2	13
Field Point	6428-MS030	64x28	1728	3	2	14
Farmington Rd	6828-MS048	68x28	1836	4	2	15
Madison Ave	6030-MS037	60x30	1800	3	2	16
Highland Park	6430-MS038	64x30	1920	3	2.5	17

MODEL NUMBER:

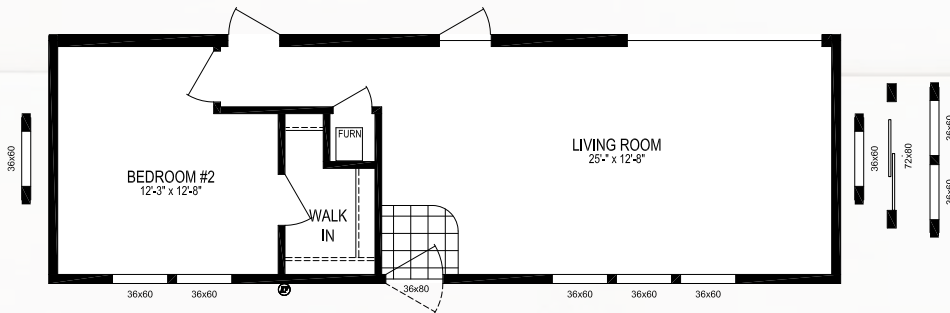
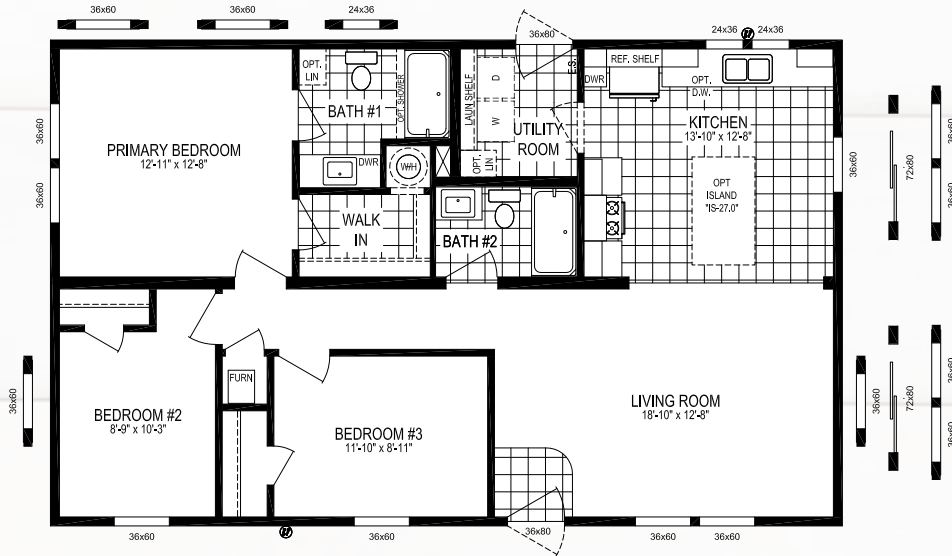
4428-MS005

44 x 28 | 1188 Sq. Ft. 3 Bed | 2 Bath

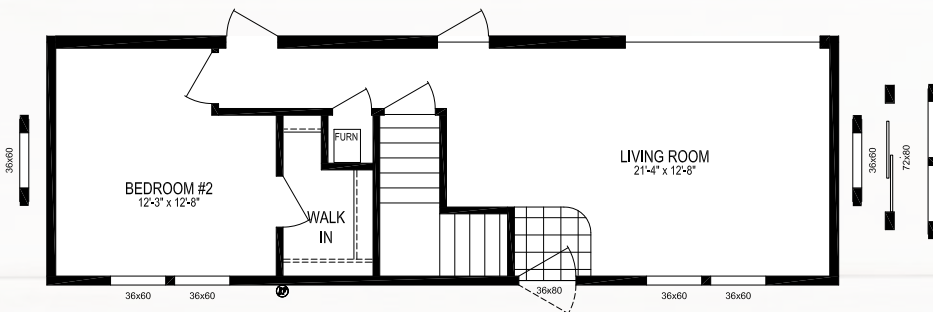
CLICK HERE FOR A 3D TOUR OF THIS FLOORPLAN!



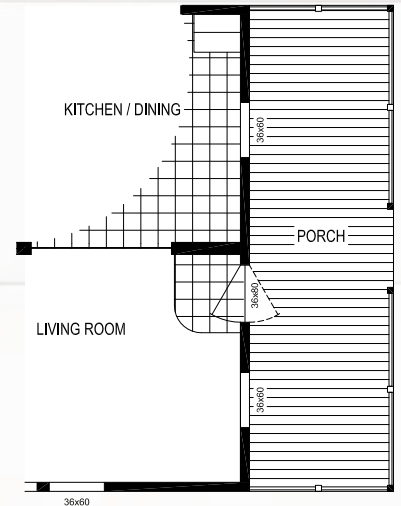
COTTONWOOD LN



2 BEDROOM OPTION



BASEMENT STAIRWELL OPTION
(REQUIRES 2 BEDROOM OPTION)



8' PORCH OPTION W/ END ENTRY

CLICK HERE FOR A 3D
TOUR OF THIS FLOORPLAN!

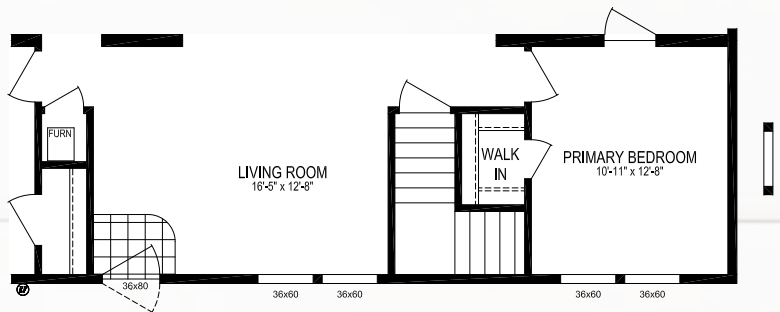
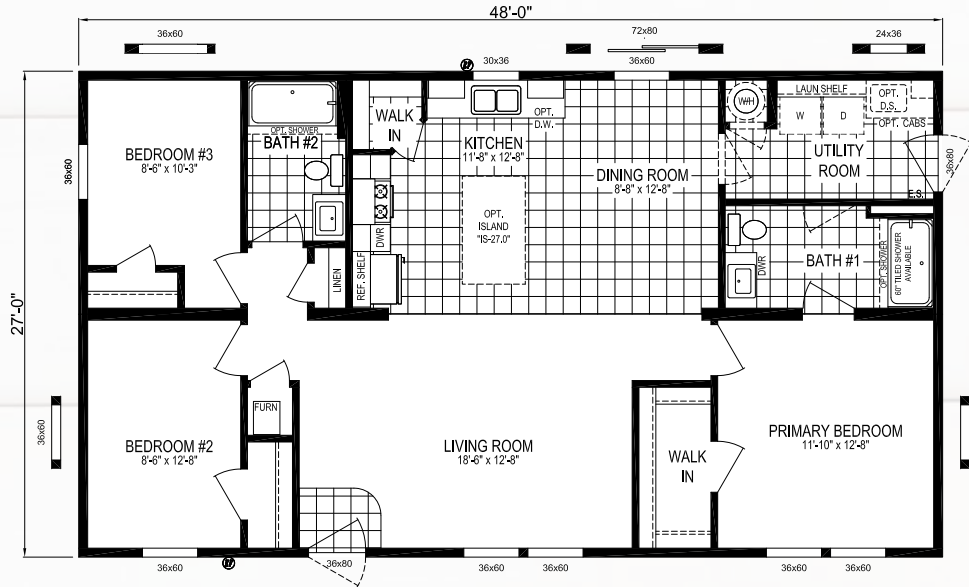


MODEL NUMBER:

4828-MS007

48 x 28 | 1296 Sq. Ft. 3 Bed | 2 Bath

SPRING MEADOW



OPTIONAL BASEMENT STAIRWELL

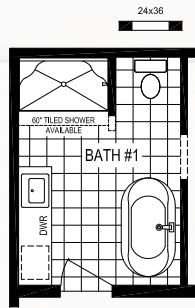
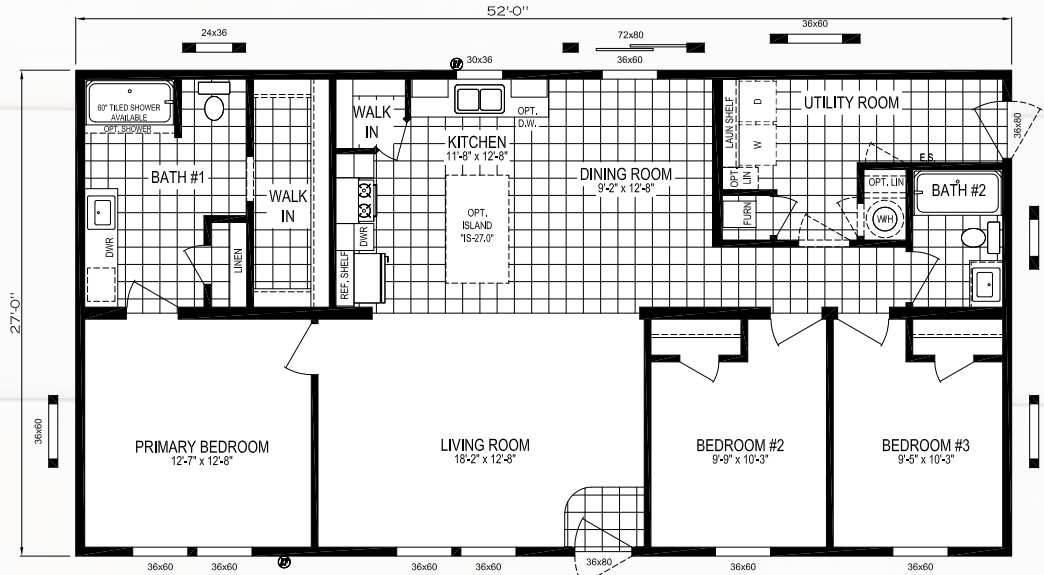
MODEL NUMBER:

5228-MS012

52 x 28 | 1404 Sq. Ft. 3 Bed | 2 Bath

SOMERSET DR

CLICK HERE FOR A 3D
TOUR OF THIS FLOORPLAN!



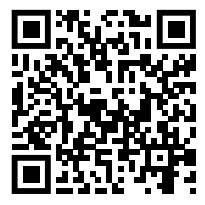
DELUXE BATH OPTION "A"



OPTIONAL BASEMENT STAIRWELL



CLICK HERE FOR A 3D
TOUR OF THIS FLOORPLAN!

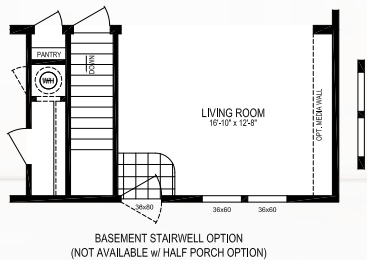
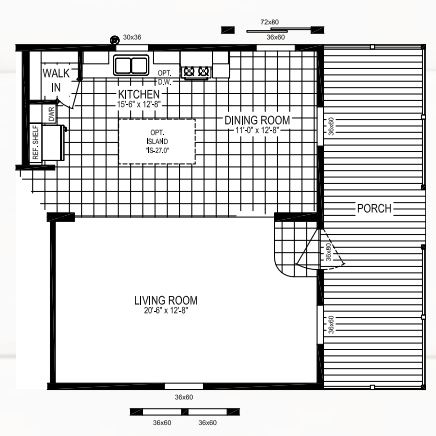
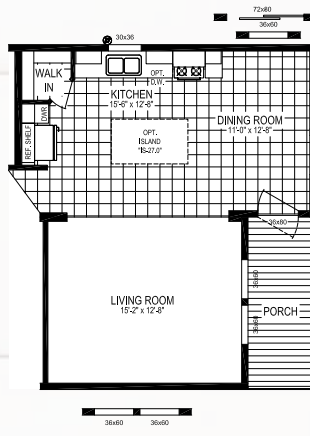
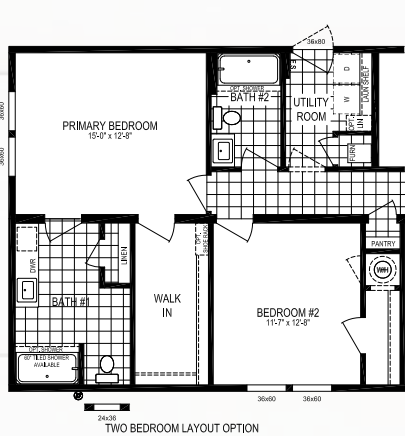
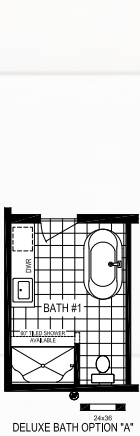
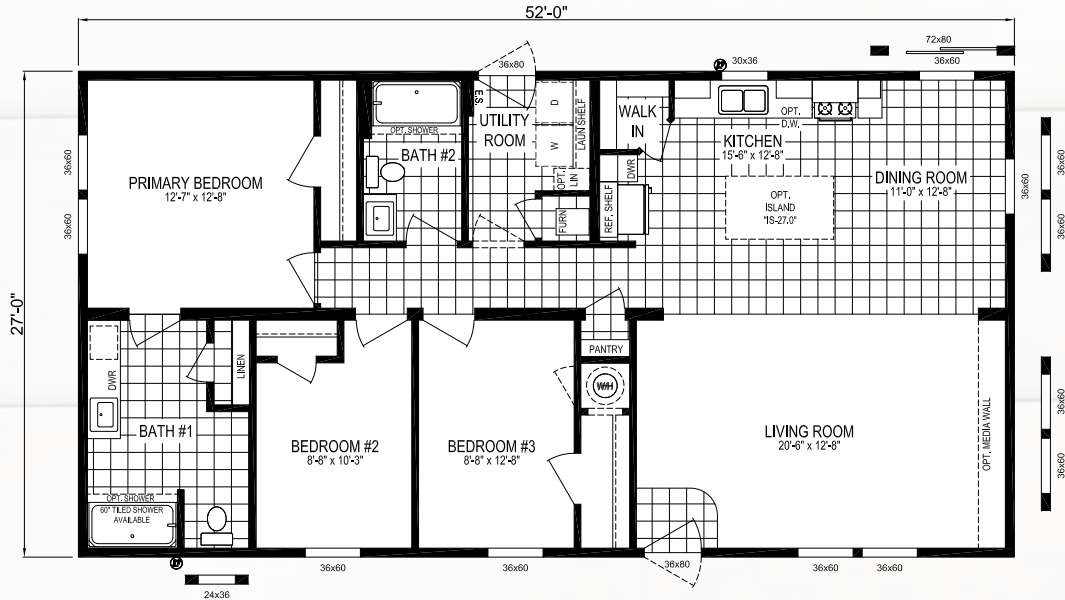


MODEL NUMBER:

5228-MS014

52 x 28 | 1404 Sq. Ft. 3 Bed | 2 Bath

CENTER ST

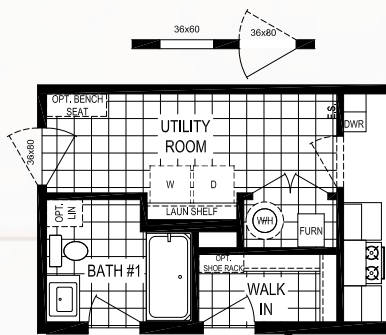
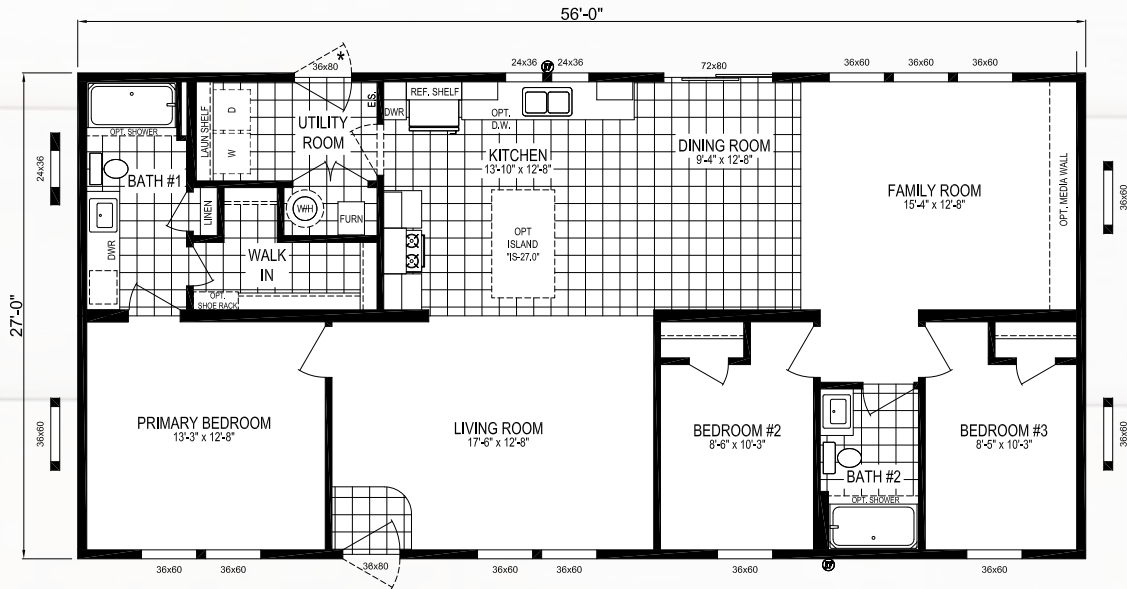


MODEL NUMBER:

5628-MS018

56 x 28 | 1512 Sq. Ft. 3 Bed | 2 Bath

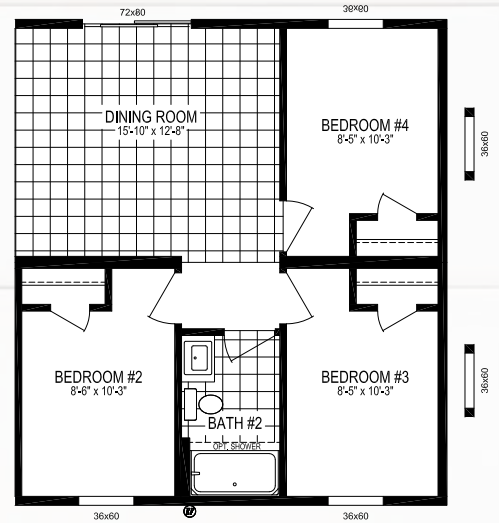
ELM ST



OPTIONAL END ENTRY



OPTIONAL BASEMENT STAIRWELL



OPTIONAL 4TH BEDROOM

CLICK HERE FOR A 3D
TOUR OF THIS FLOORPLAN!

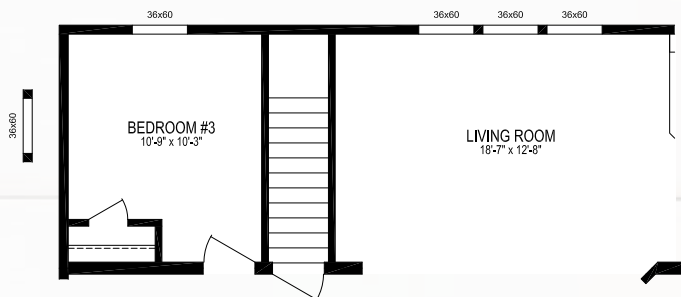
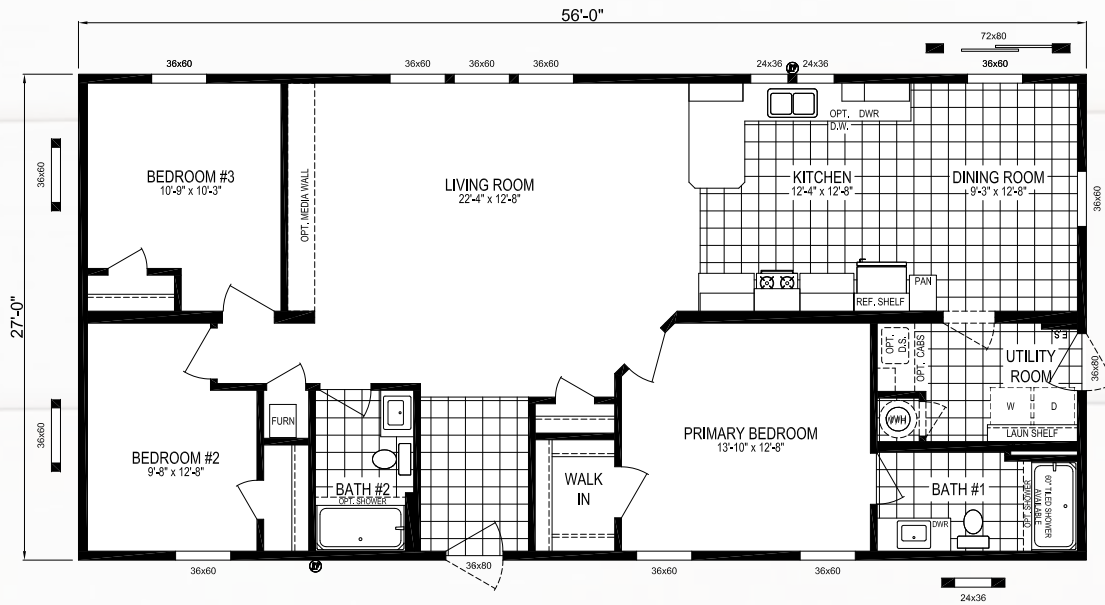


MODEL NUMBER:

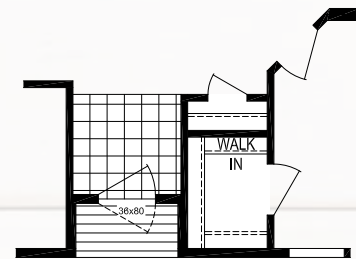
5628-MS020

56 x 28 | 1512 Sq. Ft. 3 Bed | 2 Bath

HILL ST



OPTIONAL BASEMENT STAIRWELL



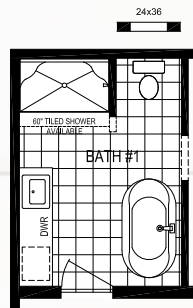
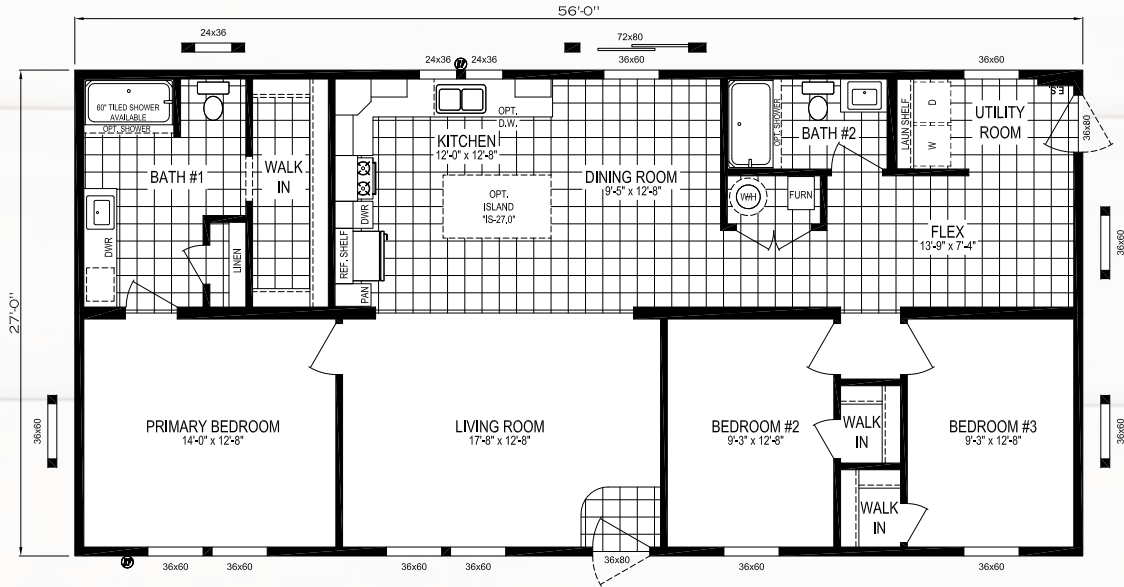
OPTIONAL RECESSED ENTRY

MODEL NUMBER:

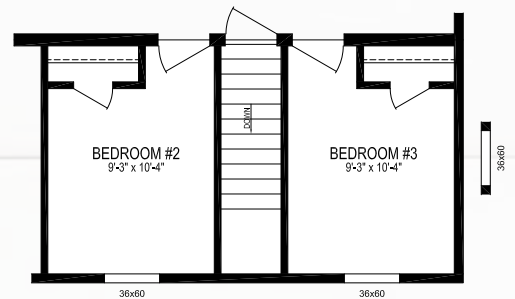
5628-MS046

56 x 28 | 1422 Sq. Ft. 3 Bed | 2 Bath

QUIET HARBOR



DELUXE BATH OPTION "A"



OPTIONAL BASEMENT STAIRWELL

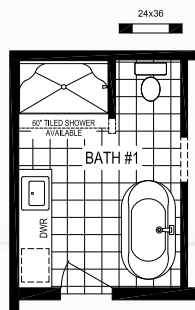
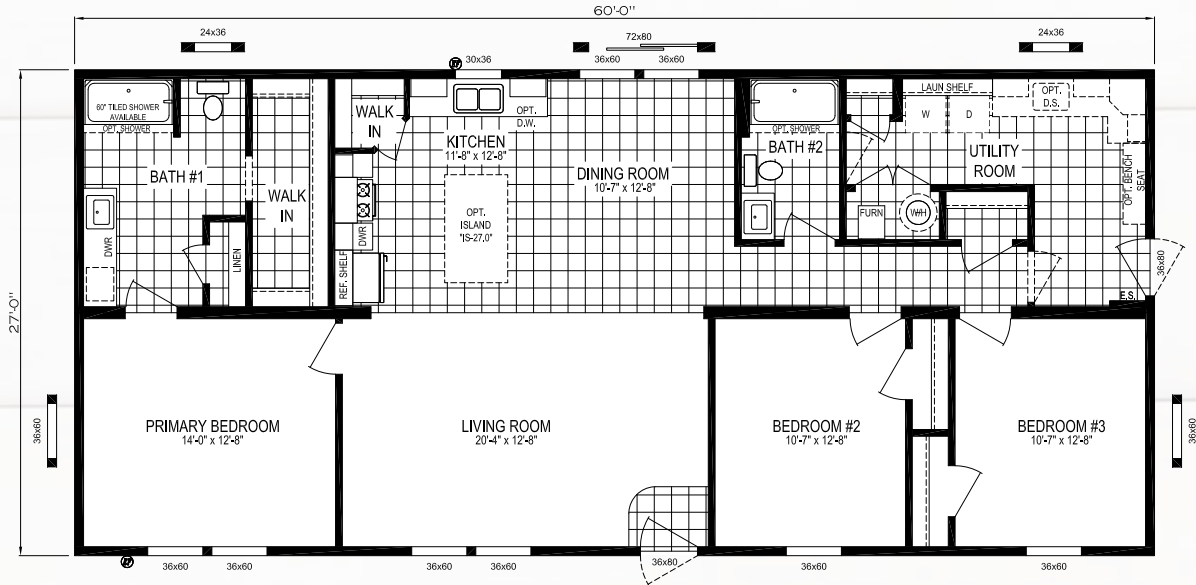


MODEL NUMBER:

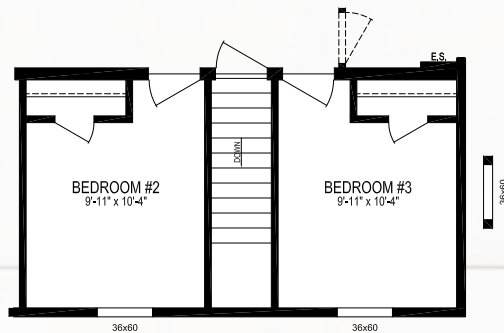
6028-MS026

60 x 28 | 1620 Sq. Ft. 3 Bed | 2 Bath

MICHIGAN AVE



DELUXE BATH OPTION "A"



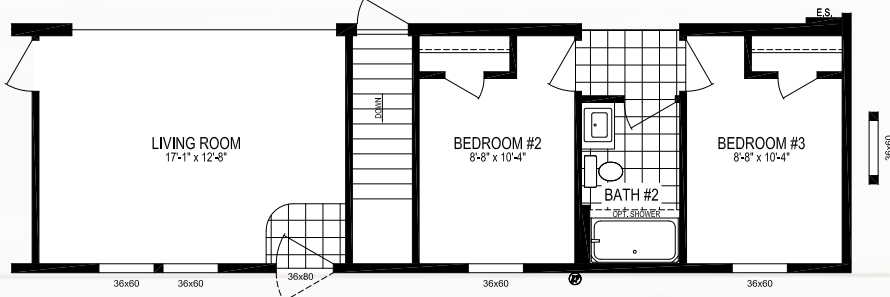
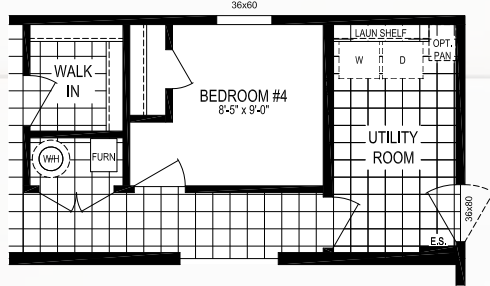
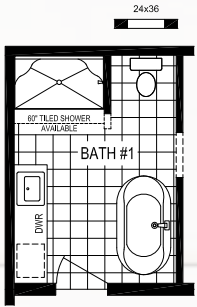
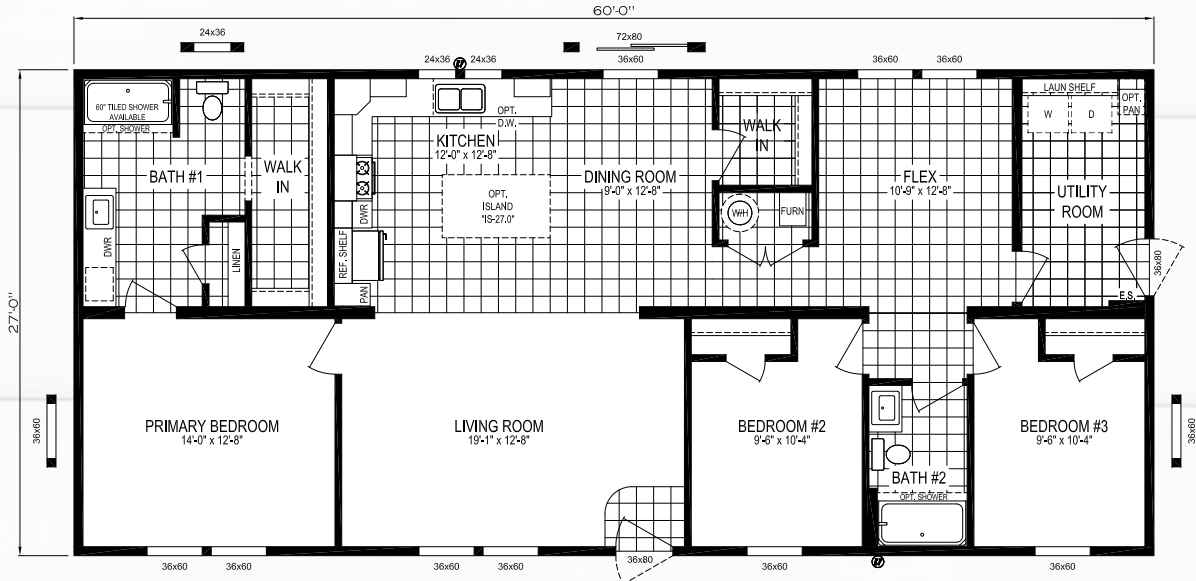
OPTIONAL BASEMENT STAIRWELL

MODEL NUMBER:

6028-MS047

60 x 28 | 1620 Sq. Ft. 3 Bed | 2 Bath

TULIP BLVD

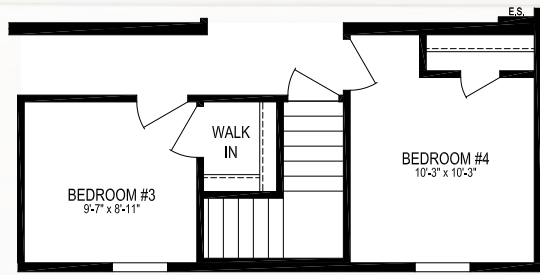
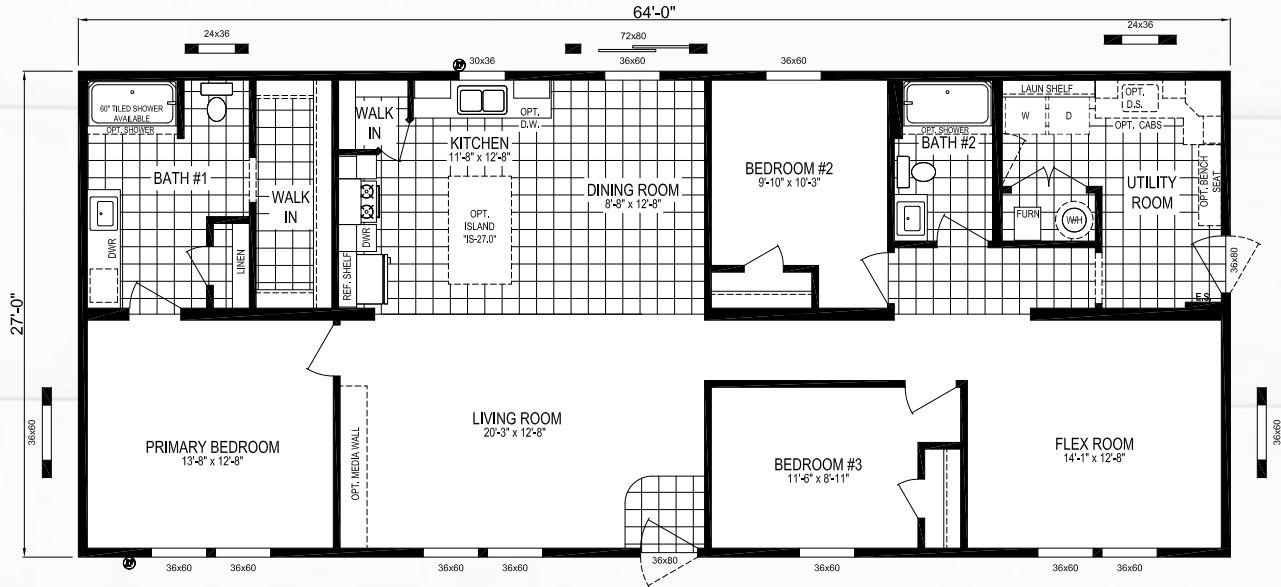


MODEL NUMBER:

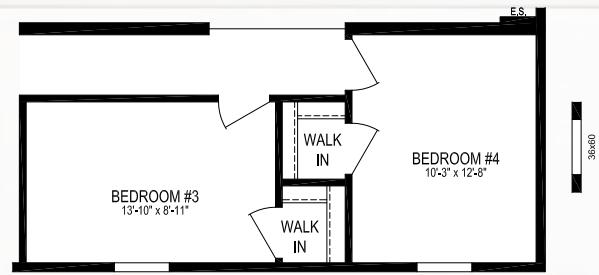
6428-MS030

64 x 28 | 1728 Sq. Ft. 3 Bed | 2 Bath

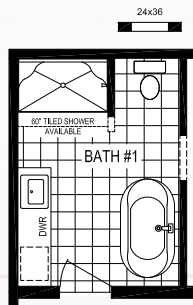
FIELD POINT



OPTIONAL BASEMENT STAIRWELL
* ONLY AVAILABLE WITH 4TH
BEDROOM OPTION



4TH BEDROOM OPTION



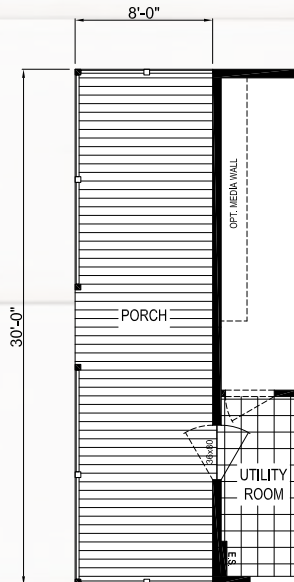
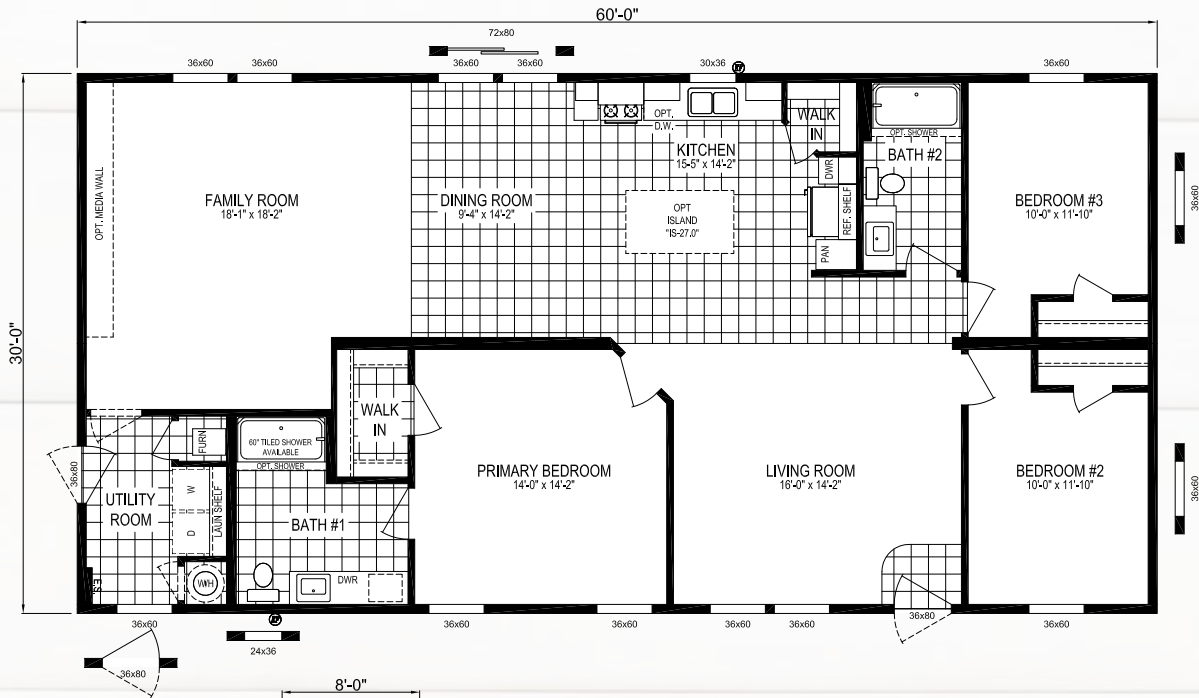
DELUXE BATH OPTION "A"

MODEL NUMBER:

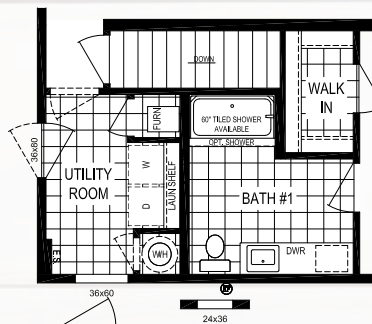
6030-MS037

60 x 30 | 1800 Sq. Ft. 3 Bed | 2 Bath

MADISON AVE



8' PORCH OPTION



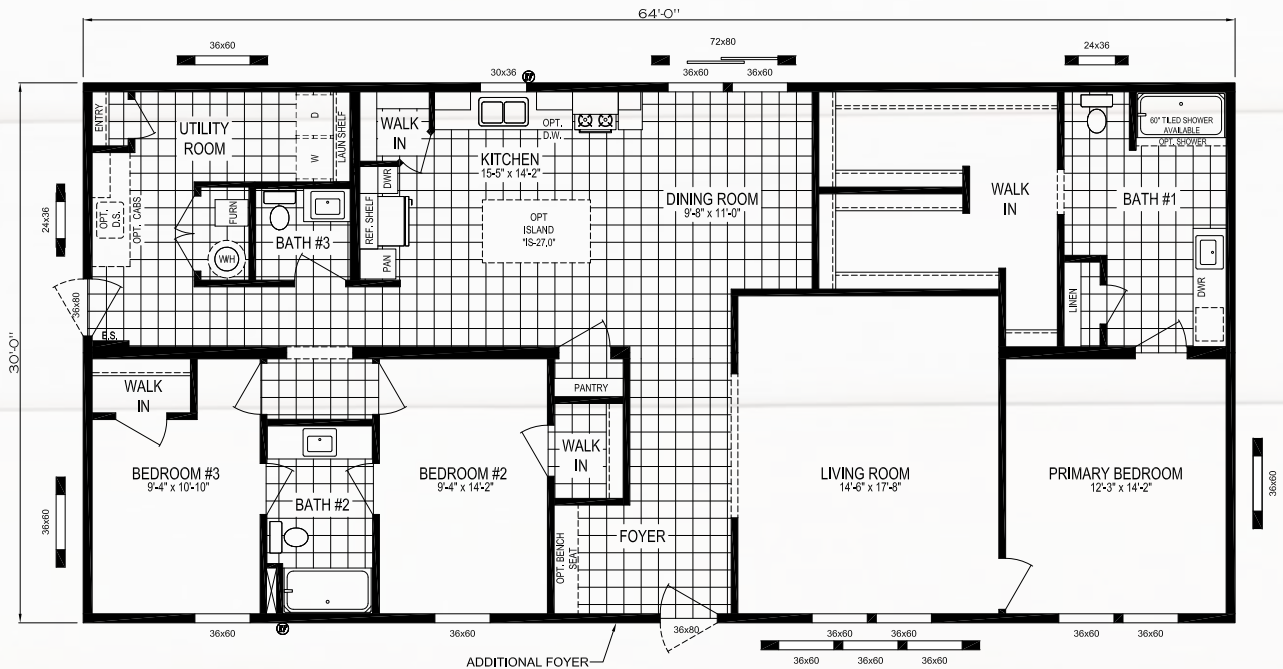
BASEMENT STAIRWELL OPTION

MODEL NUMBER:

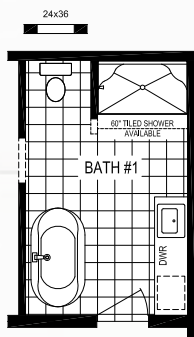
6430-MS038

64 x 30 | 1920 Sq. Ft. 3 Bed | 2.5 Bath

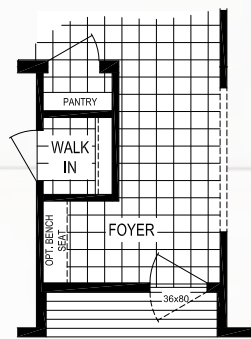
HIGHLAND PARK



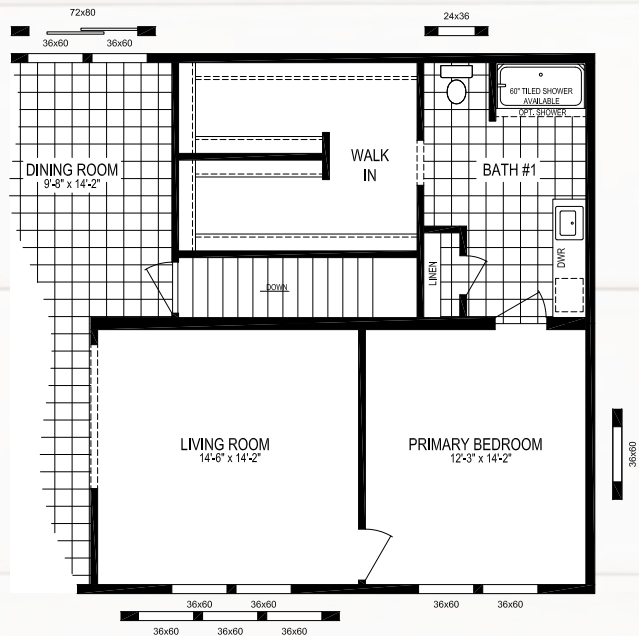
ADDITIONAL FOYER WINDOW REQUIRES RECESSED ENTRY OPTION



DELUXE BATH OPTION "A"



RECESSED ENTRY OPTION



BASEMENT STAIRWELL OPTION

MODULAR HOMES

THE *Residence*

DORMER OPTIONS



**10' Open Dormer
3/12 Pitch Only**



**20' Hinged Dormer w/6' Eyebrow
5/12 Pitch Only**



**20' Hinged Dormer w/Continuous Eave
5/12 Pitch Only**

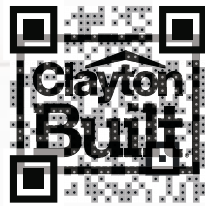


**20' Open Dormer
3/12 Pitch Only**

MODULAR HOMES

THE
Residence

BRANDS



Clayton Homes are Built Using Quality Brands

ecobee

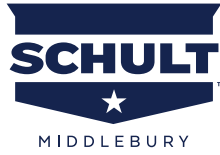


Turn to the Experts.™

Kwikset

FRIGIDAIRE





THE *Residence*

MODULAR HOMES

2023

Your Local Home Builder



437 N. Main Street
Middlebury, IN 46540
574.825.7500
574.825.7569 fax

www.claytonmiddlebury.com

Because our company has a continuous product update process, specifications, floor plan lay-out and dimensions shown on this literature are subject to change without notice or obligations. Construction and design specifications as well as features presented conceptual, therefore should not be used as actual construction data and may not be offered in all series or models. Our Retailer will provide accurate, up-to-date information on available options and specifications for your home. 01/23

