

2023



*Sahara Modular Series
Homes*



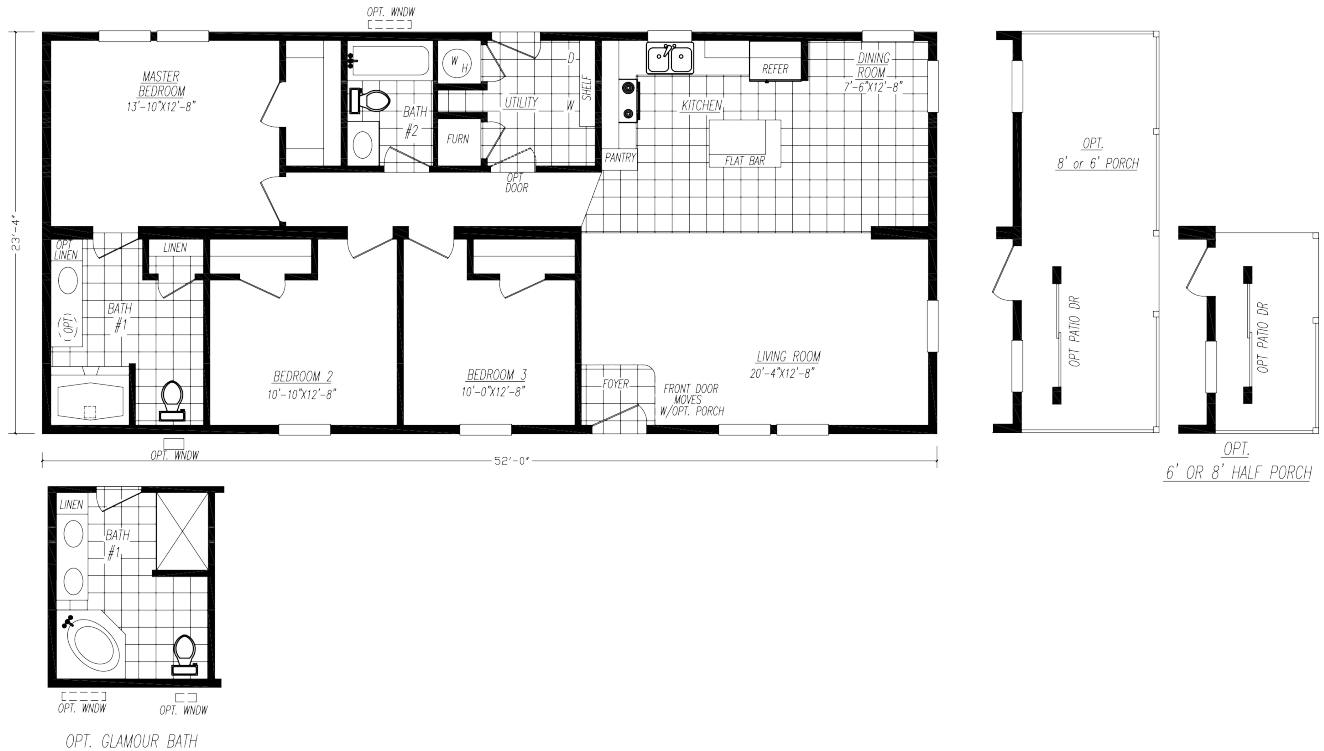
DREAM IT. DESIGN IT. BUILD IT. LOVE IT.

Your Adventure begins here.

Welcome to Adventure Homes. We offer you the best value in manufactured housing in today's market. Our homes are built with unbelievable eye appeal & each floorplan can be customized to fit your needs. Additionally, we offer award winning sales, service and production teams to enhance your value even more. We look forward to assisting you and welcoming you into our family of satisfied retailers and customers!

MOD3523F

3 Bedroom • 2 Bath • Floor Size 1,214 sq. ft.

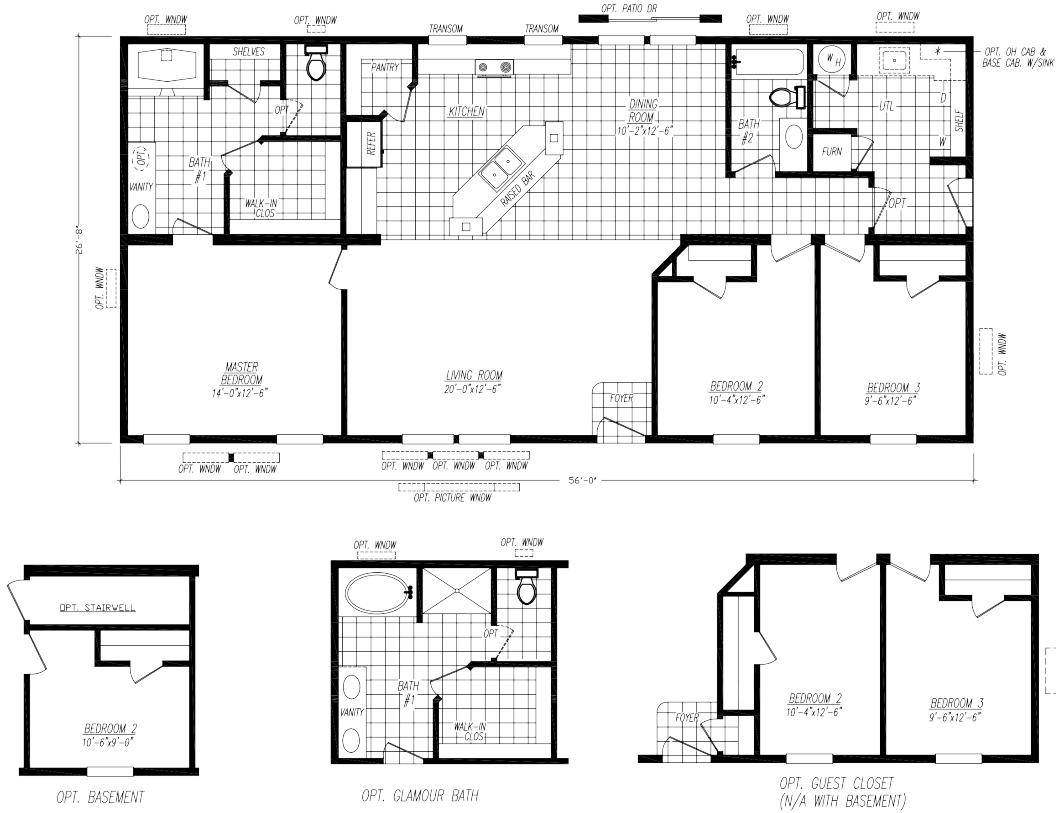


Every home built by Adventure is constructed with premium materials in a climate-controlled enclosed building facility. This helps eliminate weather-damaged building supplies and weather-related delays. These state-of-the-art facilities ensure precise and quality construction.

All Adventure Homes Modulares are built based on State Requirements.

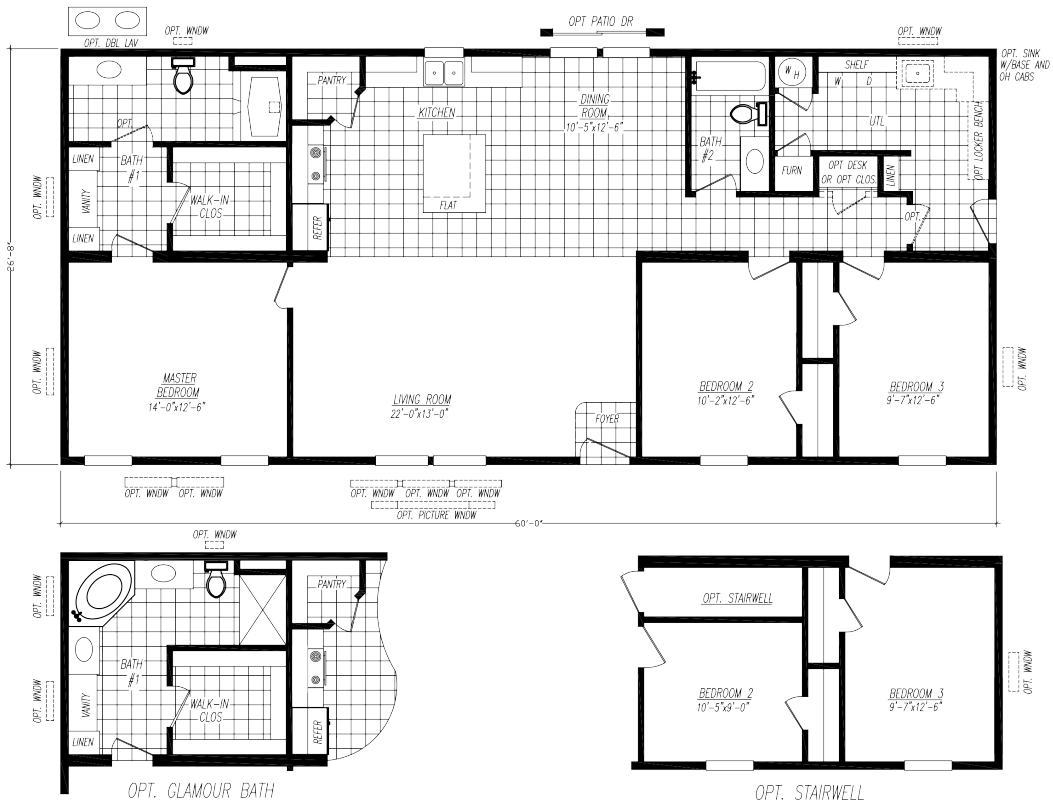
MOD2856-1

3 Bedroom • 2 Bath • Floor Size 1,494 sq. ft.



MOD4603GT

3 Bedroom • 2 Bath • Floor Size 1,600 sq. ft.



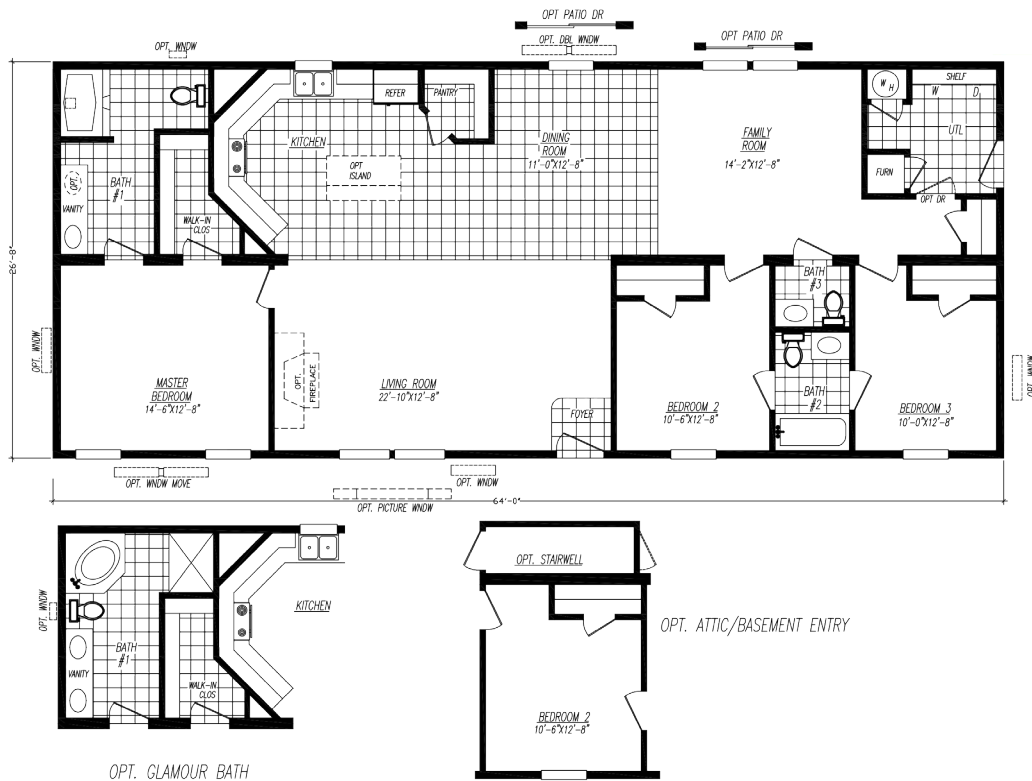
MOD4603S

3 Bedroom • 2 Bath • Floor Size 1,600 sq. ft.



MOD4643L

3 Bedroom • 2 Bath • Floor Size 1,707 sq. ft.



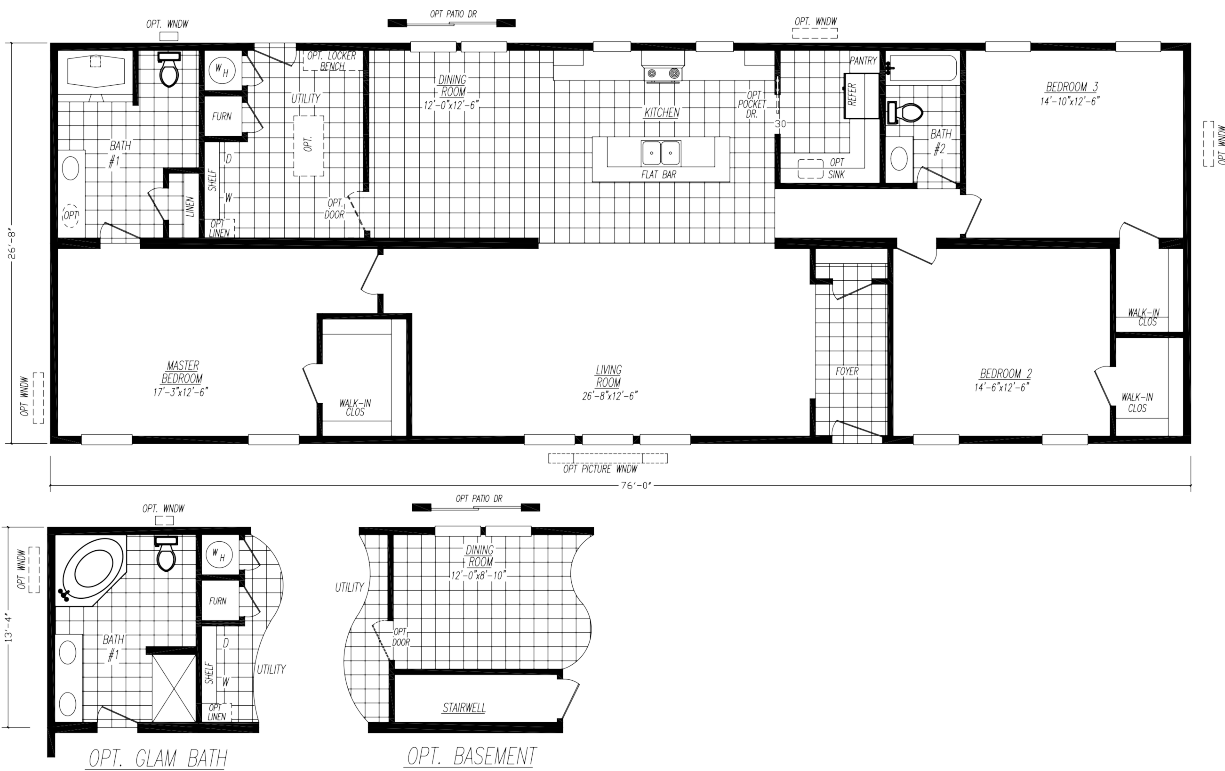
MOD4683B

3 Bedroom • 2 Bath • Floor Size 1,814 sq. ft.



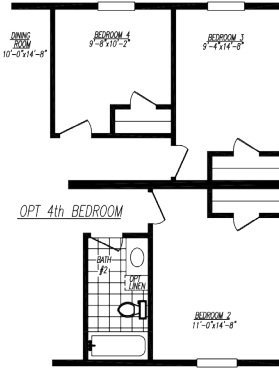
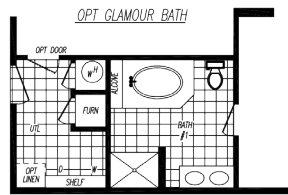
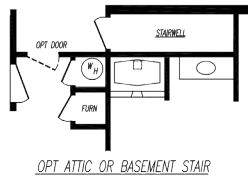
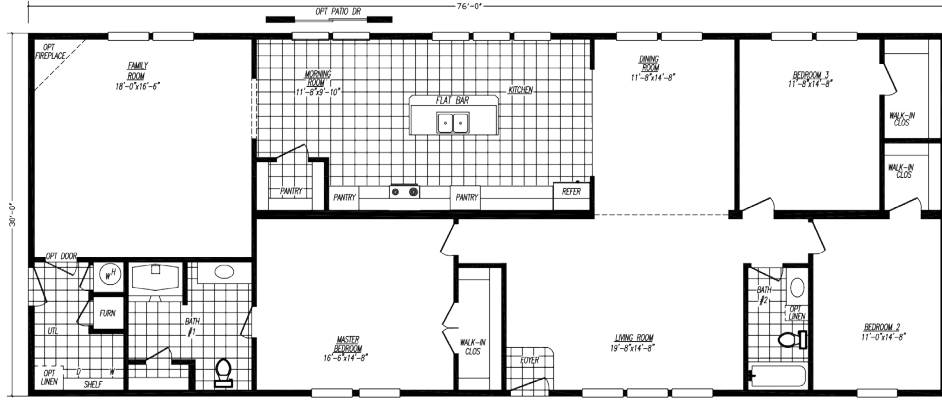
MOD4763N

3 Bedroom • 2 Bath • Floor Size 2,027 sq. ft.



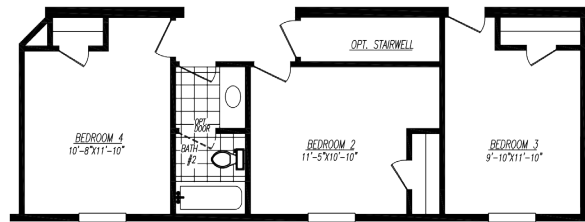
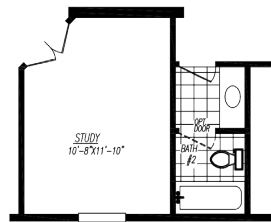
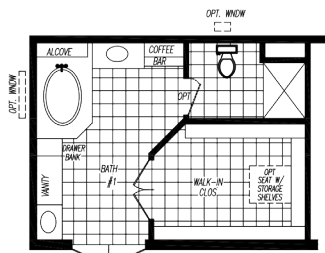
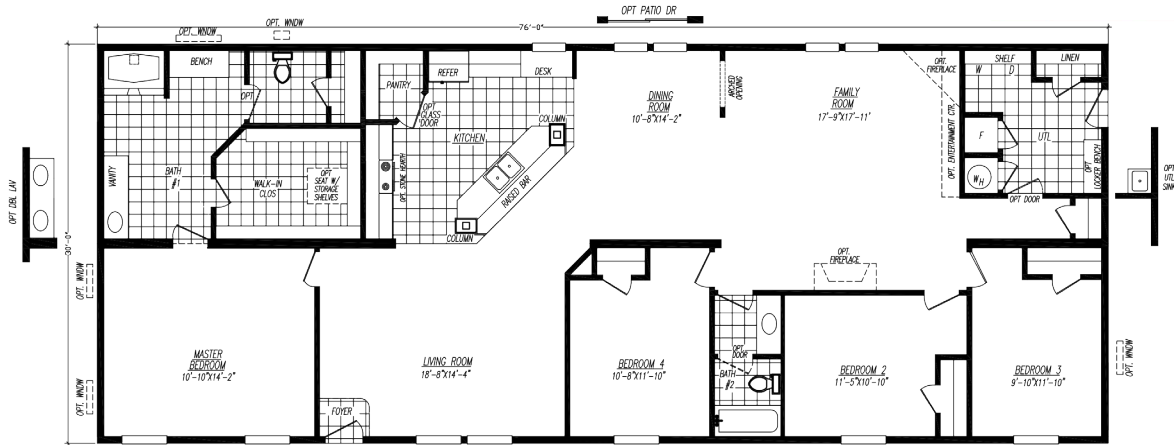
MOD0763E

3 Bedroom • 2 Bath • Floor Size 2,280 sq. ft.



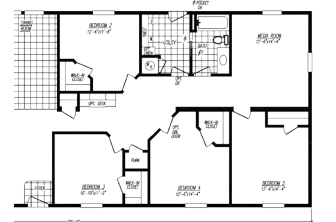
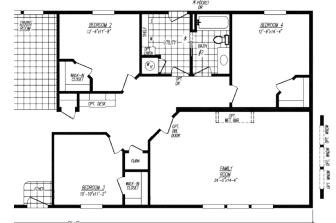
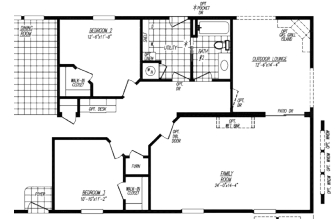
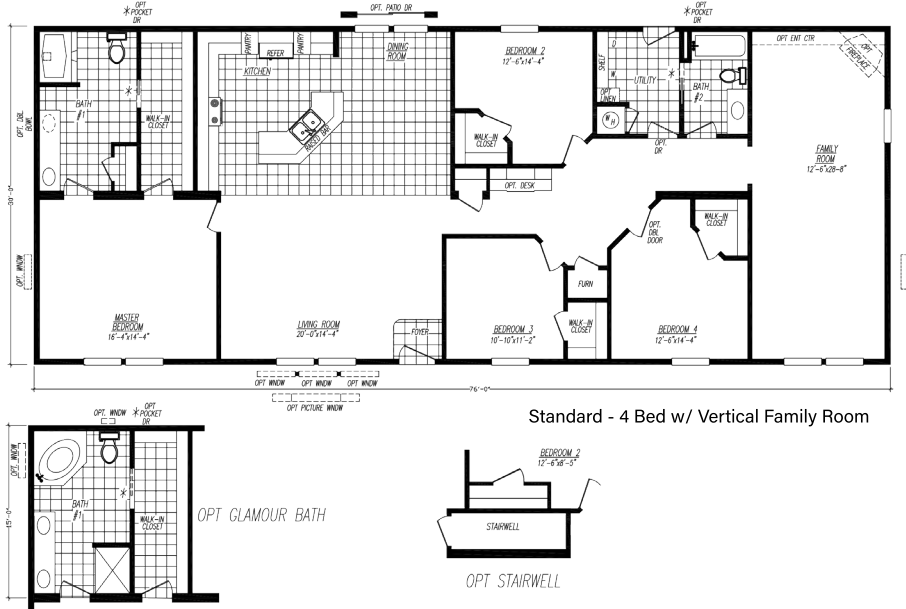
MOD0764L

4 Bedroom • 2 Bath • Floor Size 2,280 sq. ft.



MOD0764R

4 Bedroom • 2 Bath • Floor Size 2,280 sq. ft.



MOD0765M

5 Bedroom • 3 Bath • Floor Size 2,280 sq. ft.



Sahara Modular Series

Standard Features

Frame & Floor

2x8 Solid Joists 16" O.C. (24' Wide)
2x10 Solid Joists 16" O.C. (28' & 32' Wide)
Disposable Carrier
OSB Tongue & Groove Floor Decking
Double 2x10 Rim Joist
16oz. Plush Carpet
3/8" Rebond Carpet Pad
Vinyl Flooring

Exterior

2x6 Exterior Walls 16" O.C. w/ R-21 Insulation
7/16" OSB Wrap under Vinyl Siding
Housewrap & Ice/Water Shield
Vinyl Siding
Raised Panel Shutters at FDS Only
Vinyl Single Hung Windows w/ Grids - Low "E" Glass
Foam All Exterior Windows
38" x 82" R.O. 6 Panel Residential Front Door (No Storm)
34" x 82" R.O. 6 Panel Residential Rear Door (No Storm)
Light Fixtures at All Exterior Doors
30 LB GSL Roof Load
Tape All Windows & Doors

Ceiling & Roof

8ft Flat Stomped Textured Ceiling
Beamless Mateline
5/12 Roof Pitch w/ Full Length Ridge Vent
Architectural Shingles
R-60 Roof Insulation

Kitchen

Electric Coil Top Range
18cf Refrigerator
30" Power Range Hood
30" Overhead Cabinets w/ Fixed Center Shelves
Raised Panel MDF Wrapped Cabinet Doors & Stiles
Concealed Cabinet Door Hinges
(1) Bank of Drawers w/ Residential Rails & Guides
Laminated Countertops w/ 1"x4" Laminate Backsplash
Stainless Steel Kitchen Sink
Shelf over Range & Refrigerator

Bath

1pc Garden Tub Shower (Bath #1)
1pc Tub Shower w/ Anti-Scald Single Lever Faucet
(Additional Bathrooms)
Laminated Countertops w/ 1"x4" Laminate Backsplash
Mirror Above Each Bathroom Sink
Power Exhaust Fan in Bathroom(s)
China "Water Saver" Commode in Bathroom(s)
White China Sink(s) w/ Single Lever Faucet(s)

Interior

1/2" Finished Drywall Throughout
2x4 Interior Walls 16" O.C.
Flat Wrapped Moldings Throughout
2 Panel White Interior Doors Throughout
Door Stop All 3 Sides
3 Hinge Interior Doors
2" Plastic Mini-Blinds Throughout
Wire Closet Shelving
Lino Entry at Front Door
Utility Shelf above Washer & Dryer

Electrical, Plumbing & Heating

Smoke/Carbon Monoxide Detectors (combo)
200 AMP Service, Electric Furnace
5 Wire Thermostat
Whole House Fan Switch
Return Air Through Ceiling Registers
40 Gallon Electric Water Heater
(1) Exterior Faucet
(2) Exterior Electrical Receptacles (1 FDS & 1 ODS)
Whole House Shut-off Valve
Water Shut-off Valves (All Sinks & Commodes)
Plumb & Wire for Washer & Dryer
All Plumbing - STUBBED THRU FLOOR
Duct Work - NOT INCLUDED
Register Boots Installed
Bedroom Ceiling Lights Throughout

Because of continuous product improvements, specifications are subject to change without notice or obligation

All features subject to State Approvals

ADVENTURE HOMES

www.AdventureHomes.net

1119 Fuller Drive, Garrett, IN 46738

877-510-1955



August '22