

2023

# PULSE

## COLLECTION



# Table of Contents

## Standard Features

**3** Standard Features

## Single Section Models

<b>4</b>	4814-790   14x48   656 SQ FT   2 beds   1 bath
<b>5</b>	6014-704   14x60   820 SQ FT   2 beds   2 baths
<b>6</b>	6614-701   14x66   902 SQ FT   3 beds   2 baths
<b>7</b>	4816-727   16x48   736 SQ FT   2 beds   1 bath
<b>8</b>	5616-700   16x56   858 SQ FT   2 beds   2 baths
<b>9</b>	5616-779   16x56   858 SQ FT   2 beds   2 baths
<b>10</b>	6016-700   16x60   920 SQ FT   2 beds   2 baths
<b>11</b>	6016-711   16x60   920 SQ FT   2 beds   2 baths
<b>12</b>	6016-779   16x60   920 SQ FT   2 beds   2 baths
<b>13</b>	6616-700   16x66   1,012 SQ FT   3 beds   2 baths
<b>14</b>	6616-711   16x66   1,012 SQ FT   3 beds   2 baths
<b>15</b>	6616-779   16x66   1,012 SQ FT   3 beds   2 baths
<b>16</b>	7616-700   16x76   1,165 SQ FT   3 beds   2 baths
<b>17</b>	7616-711   16x76   1,165 SQ FT   3 beds   2 baths
<b>18</b>	7616-714   16x76   1,165 SQ FT   3 beds   2 baths
<b>19</b>	7616-779   16x76   1,165 SQ FT   3 beds   2 baths

## Multi-Section Models

<b>20</b>	4824-734   24x48   1,108 SQ FT   3 beds   2 baths
<b>21</b>	5224-735   24x52   1,179 SQ FT   3 beds   2 baths
<b>22</b>	5624-744   24x56   1,269 SQ FT   3 beds   2 baths
<b>23</b>	4428-781   28x44   1,188 SQ FT   3 beds   2 baths
<b>24</b>	4828-746   28x48   1,296 SQ FT   3 beds   2 baths
<b>25</b>	4828-782   28x48   1,296 SQ FT   3 beds   2 baths
<b>26</b>	4828-783   28x48   1,296 SQ FT   3 beds   2 baths
<b>27</b>	5228-784   28x52   1,404 SQ FT   3 beds   2 baths
<b>28</b>	5228-785   28x52   1,404 SQ FT   3 beds   2 baths
<b>29</b>	5228-774P   28x52   1,332 SQ FT   3 beds   2 baths
<b>20</b>	5628-774P   28x56   1,440 SQ FT   3 beds   2 baths
<b>31</b>	5628-786   28x56   1,512 SQ FT   3 beds   2 baths
<b>32</b>	5628-787   28x56   1,512 SQ FT   3 beds   2 baths
<b>33</b>	6028-788   28x60   1,620 SQ FT   4 beds   2 baths
<b>34</b>	7228-789   28x72   1,944 SQ FT   3 beds   2 baths

## Optional Features

<b>35</b>	Optional Hitch End Elevations
<b>36</b>	Optional Dormers

# Standard Features

## INTERIOR

- **Decorative Rods w/side Panels – Main Living Areas**
- 2" Blinds Throughout
- **Shaw 25 oz. "New Wave" Carpet w/ 5# Rebond Pad**
- **Lux Congoleum No Wax Vinyl Flooring**
- 8' Flat Ceilings Throughout
- Stipple Ceiling Finish
- Wall Coverings 3/8" Wall Board
- Ventilated Wire Shelving in Closets
- **LED Recessed Can Lights T/O Except Baths**
- CFL Bulbs Installed
- **Ceiling Fan with Light – Living Room**
- 2" DuraCraft Flat Ceiling Cove, Door & Window Casing Throughout
- **32" 2-Panel White Interior Doors with 3 Mortised Hinges – Bedrooms & Baths**
- High Pressure Countertops-Throughout
- 4" Laminate Backsplash Throughout
- Foyer Linoleum
- Door Chime
- **Pfister Metal Faucets – Kitchen & Baths**

## KITCHEN

- **42" Raised Panel DuraCraft Overhead Cabinets**
- Center Shelf Base Cabinets
- Refrigerator Overhead Cabinet
- MDF Stiles
- GFCI Receptacles
- Metal Drawer Guides
- Bank of Drawers (4)
- Cabinet Doorknobs & Drawer Pulls- Black
- Concealed Cabinet Door Hinges
- 8" Stainless Steel Double Bowl Kitchen Sink
- Frigidaire Appliances
  - 30" Free-Standing Electric Range – Black
  - 18 CF Frost Free Refrigerator – Black
- Window Over Kitchen Sink (where available)

## BATHS

- 60" 1pc. Fiberglass Tub/Shower – Bath 1 & Bath 2
- Porcelain Square Sinks – Both Baths
- **Elongated Commodes - Both Baths**
- Lighted Power Exhaust Fans – Both Baths
- GFCI Receptacles
- **Towel Bar & Tissue Holders – Both Baths**
- 3-Bulb Strip Bar Vanity Lights – Both Baths
- **Stile Framed Mirrors – Both Baths**

## INSULATION

- **Zone III Insulation**
  - R-28 Blown Ceiling Insulation with Vapor Barrier
  - R-13 Fiberglass Insulation in Walls – Single Section
  - R-19 Fiberglass Insulation in Walls – Sections
  - R-11 Fiberglass Insulation in Floors – Between I-Beams
  - R-19 Fiberglass Insulation Floors-Outside I-Beams

## EXTERIOR

- Nominal 3/12 Roof Pitch
- **OSB Exterior Sheathing**
- 25 Year Tamko Fiberglass Shingle
- Ice and Water Shield
- Aluminum Fascia w/Vented Soffit
- **36"x80" Residential Fiberglass Front Door with Storm & Deadbolt – Storm Door Shipped Loose**
- **36"x80" Residential Fiberglass Rear with Storm & Deadbolt – Storm Door Shipped Loose**
- Exterior Light at Front & Rear Doors
- Double 4.5" Dutch Lap Vinyl Siding
- (1) Exterior Faucet
- (1) Exterior Recept
- **Conduit Drop**
- Single Hung Low E White Vinyl Windows – No Grids
- 15" Raised Panel Shutters – Door Side & H.E. – Single Section
- 15" Raised Panel Shutters – Door Side - Sectionals
- **Kwikset® Smart Key Locks & Hardware**

## UTILITIES

- **Carrier Electric Furnace with Door**
- 200 AMP Service Panel Box
- **In-Line / Perimeter Floor Registers**
- High/Low Return Air System (where available)
- **40 Gallon Electric Water Heater**
- Water Heater Pan with Exterior Drain
- PEX Plumbing
- Wire & Plumb for Washer
- Wire & Vent for Dryer Installed
- Individual Water Shut Offs Throughout
- Recessed Whole House Shut Off
- Linked Smoke / CO Detectors in Main Living Areas and All Bedrooms
- **Ecobee 3 "SMART" Thermostat**

## CONSTRUCTION

- Steel I-Beam Frame with Detachable Hitch
- 2"x6" Floor Joists - 16" O.C. Single Section & Sectionals
- 2"x4" Exterior Walls – 16" O.C. Single Section
- 2"x6" Exterior Walls – 16" O.C. - Sectionals
- 19/32" T&G OSB floor Decking Glued & Fastened
- 20 lb. Roof Load
- Roof Truss 24" O.C.
- 7/16" OSB Roof Sheathing
- Ridge Vent Roof Venting
- Metal In-Floor Crossovers – Sectionals
- **Exterior Door Supports, Front & Rear Doors**
- All Exterior Penetrations Sealed
- **Raised Siding – Skirting Application**

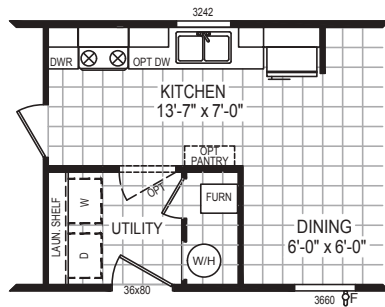
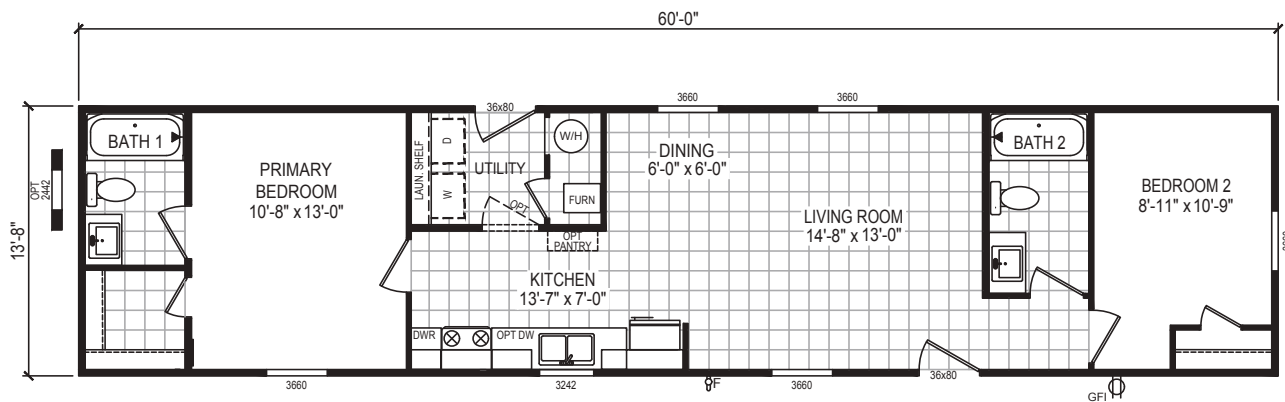




# 6014-704

14x60 | 820 SQ FT | 2 beds | 2 baths

\*Shown w/ Optional 6' Dormer

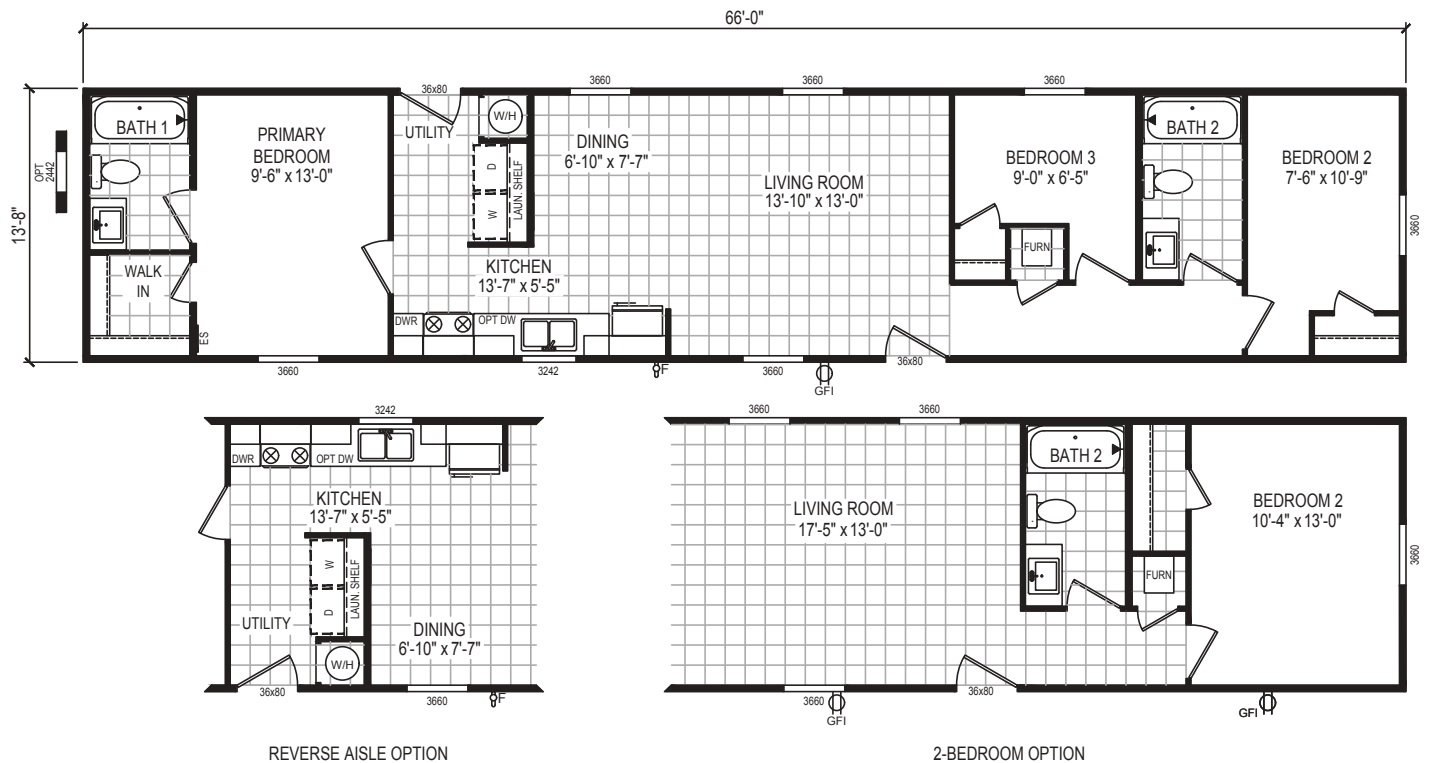


REVERSE AISLE OPTION



# 6614-701

14x66 | 902 SQ FT | 3 beds | 2 baths

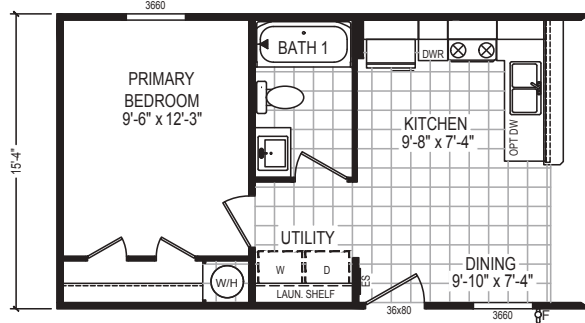
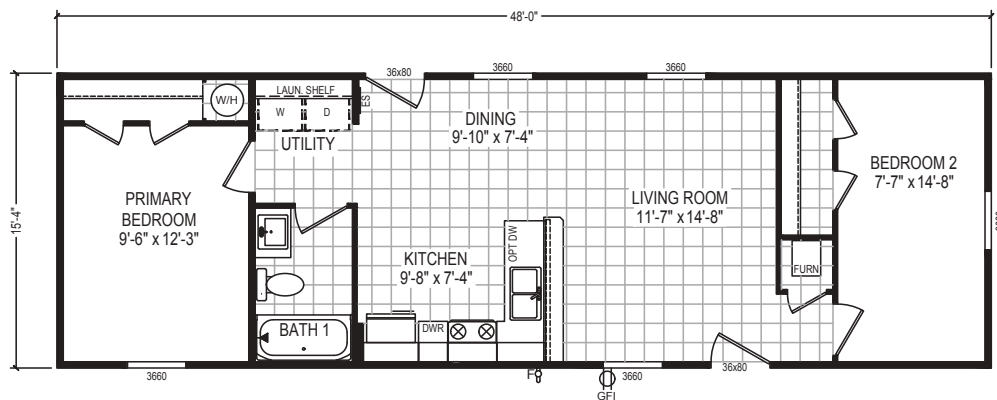




# 4816-727

16x48 | 736 SQ FT | 2 beds | 1 bath

\*Shown w/ Optional "B" Exterior PKG

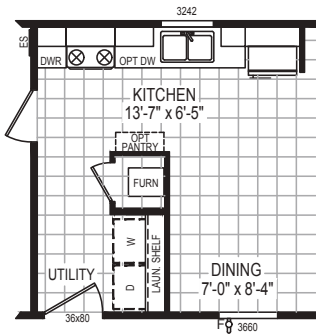
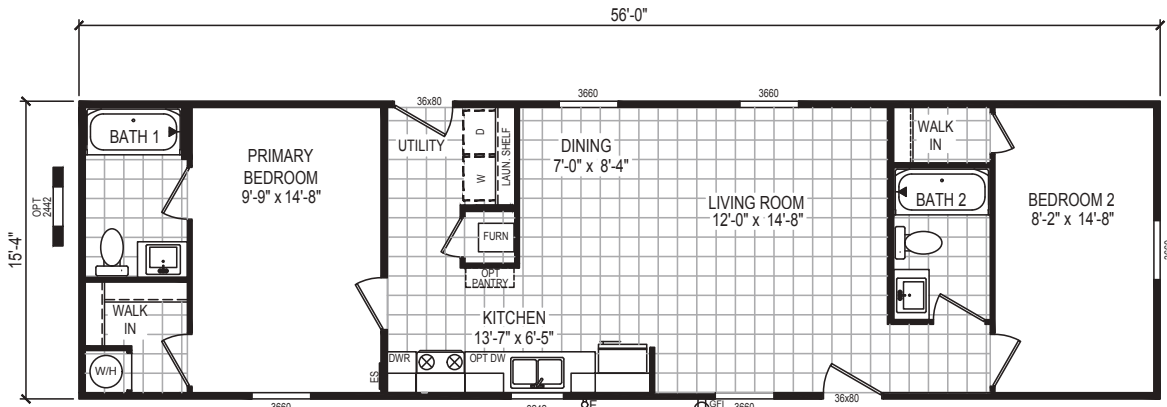


REVERSE AISLE OPTION



# 5616-700

16x56 | 858 SQ FT | 2 beds | 2 baths



REVERSE AISLE OPTION

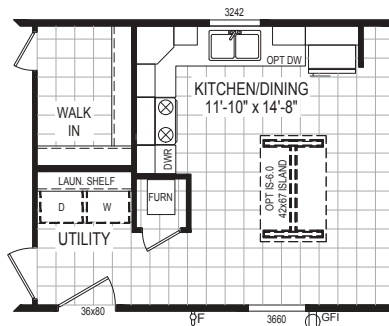
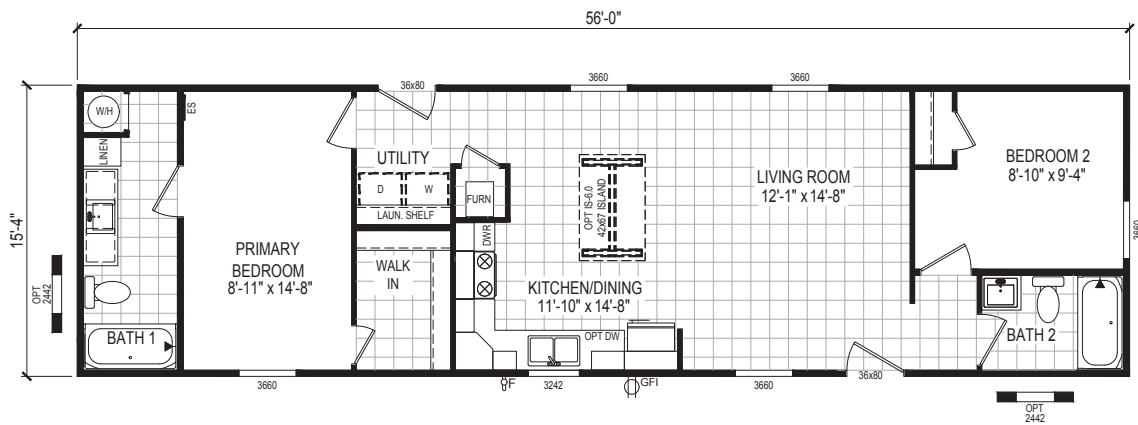




# 5616-779

16x56 | 858 SQ FT | 2 beds | 2 baths

\*Shown w/ Optional 6' Dormer

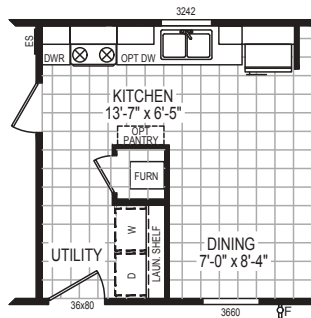
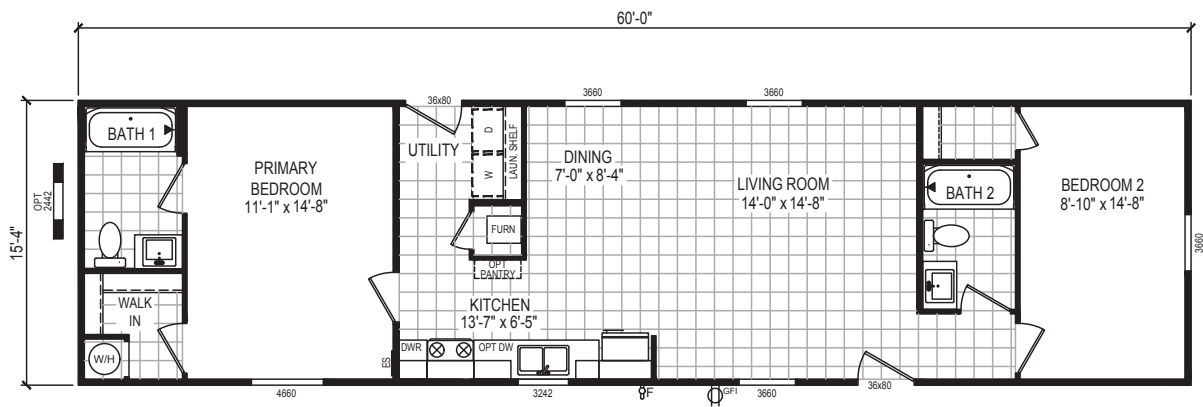


REVERSE AISLE OPTION



# 6016-700

16x60 | 920 SQ FT | 2 beds | 2 baths



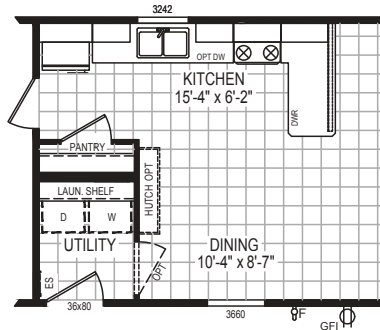
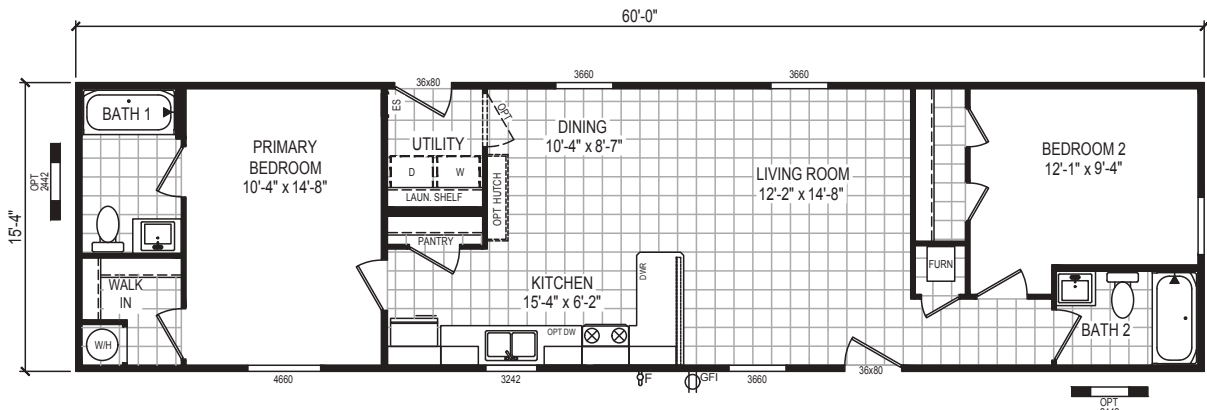
REVERSE AISLE OPTION



# 6016-711

16x60 | 920 SQ FT | 2 beds | 2 baths

\*Shown w/ Optional 6' Dormer



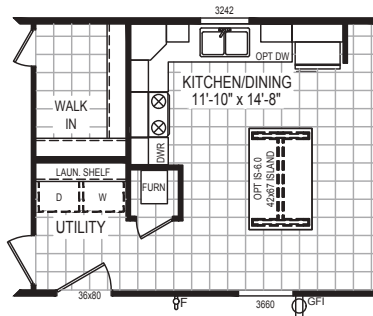
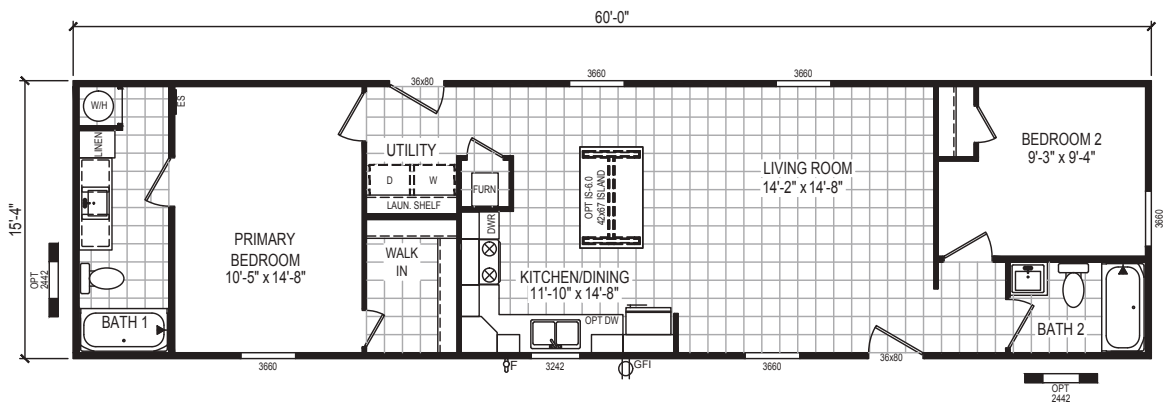
REVERSE AISLE OPTION



# 6016-779

16x60 | 920 SQ FT | 2 beds | 2 baths

\*Shown w/ Optional 6' Dormer

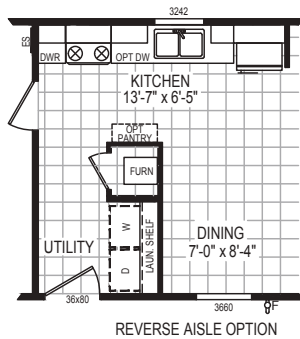
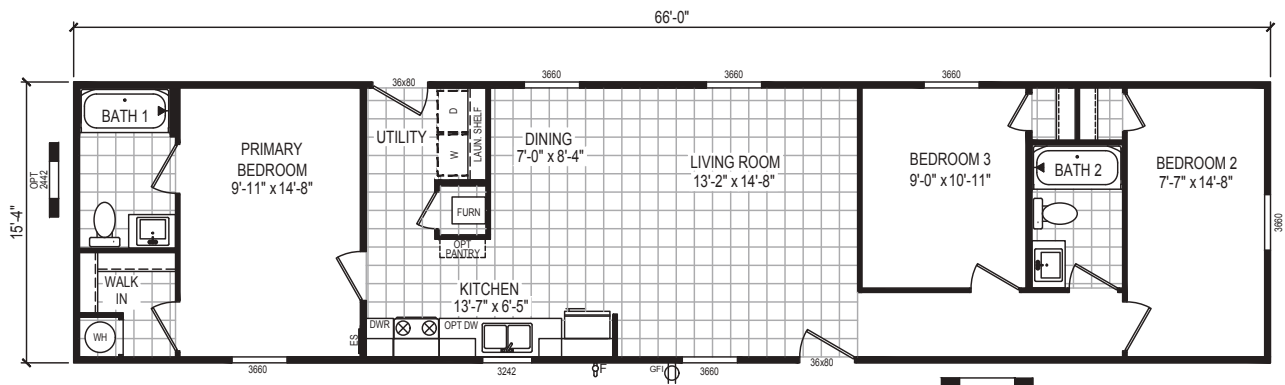


REVERSE AISLE OPTION

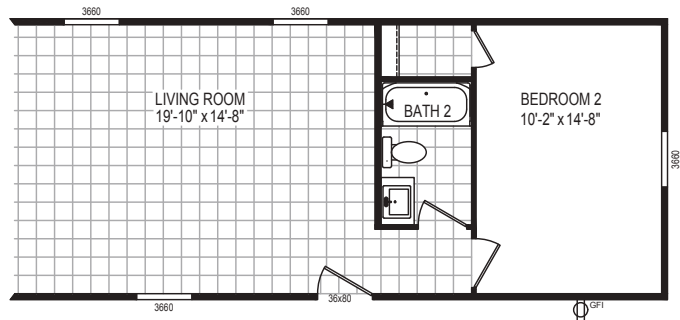


# 6616-700

16x66 | 1,012 SQ FT | 3 beds | 2 baths



REVERSE AISLE OPTION

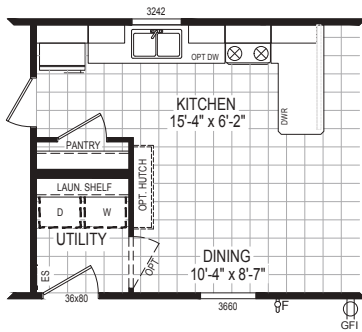
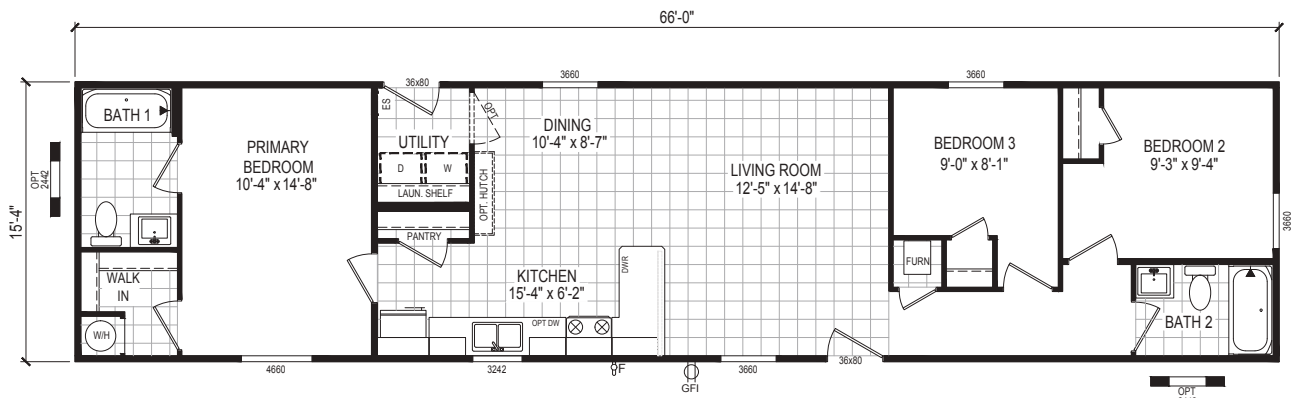


2-BEDROOM OPTION

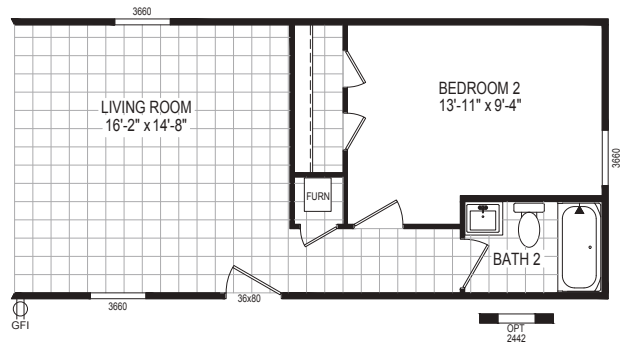


# 6616-711

16x66 | 1,012 SQ FT | 3 beds | 2 baths



REVERSE AISLE OPTION

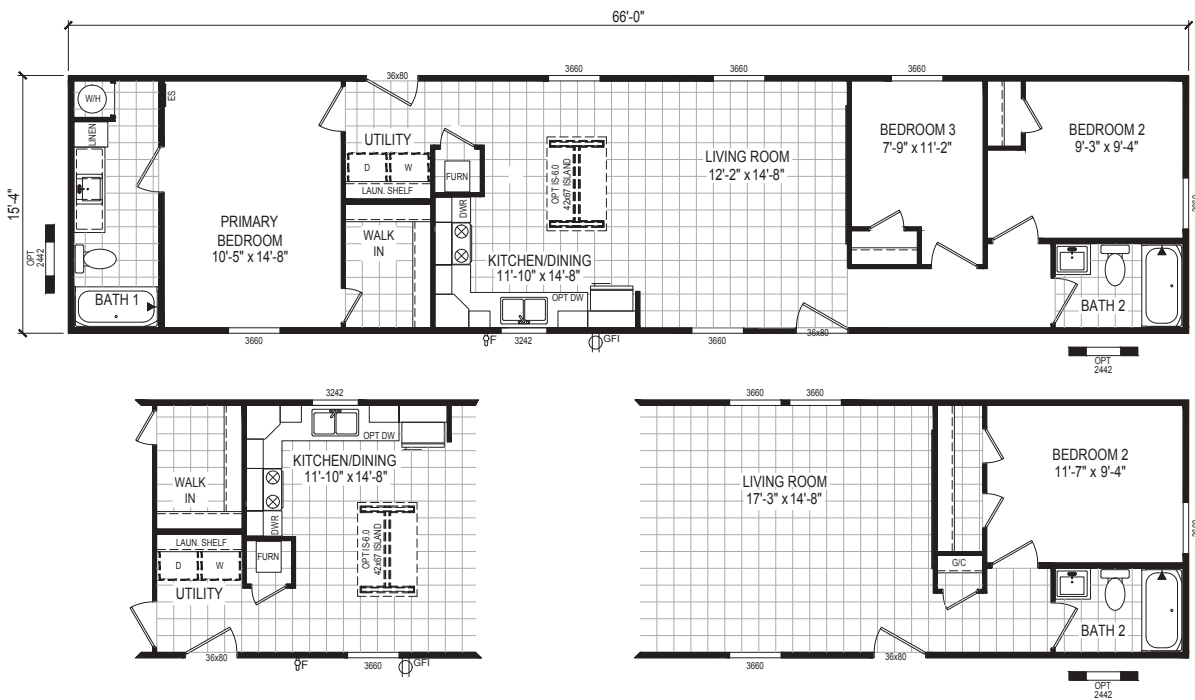


2-BEDROOM OPTION



# 6616-779

6616-779 | 16x66 | 1,012 SQ FT | 3 beds | 2 baths

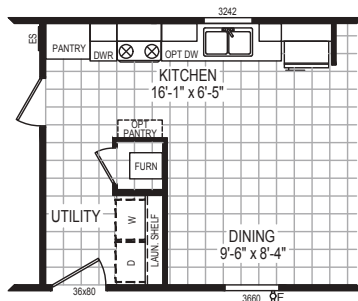
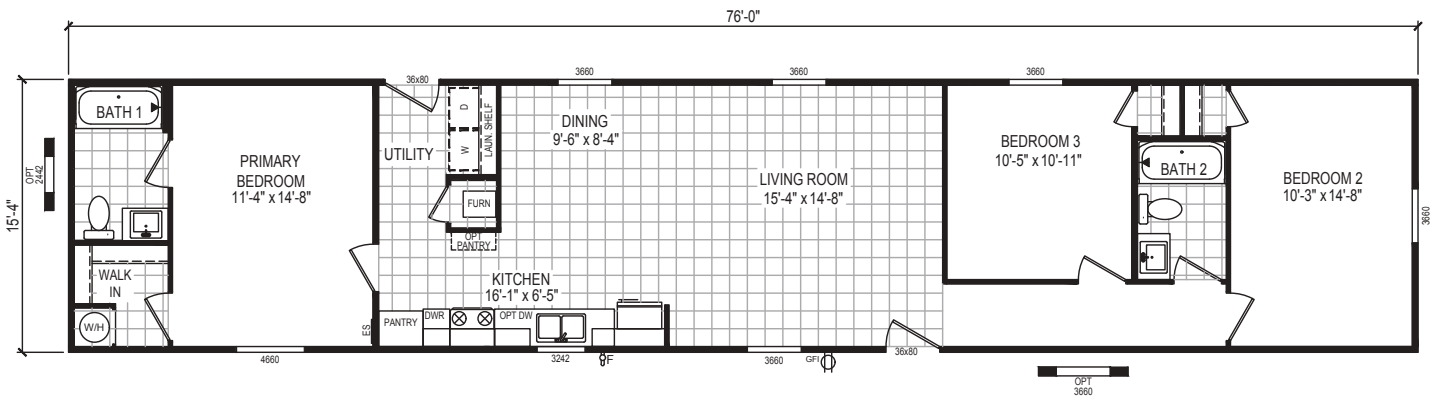




# 7616-700

16x76 | 1,165 SQ FT | 3 beds | 2 baths

\*Shown w/ Optional 6' Dormer



REVERSE AISLE OPTION

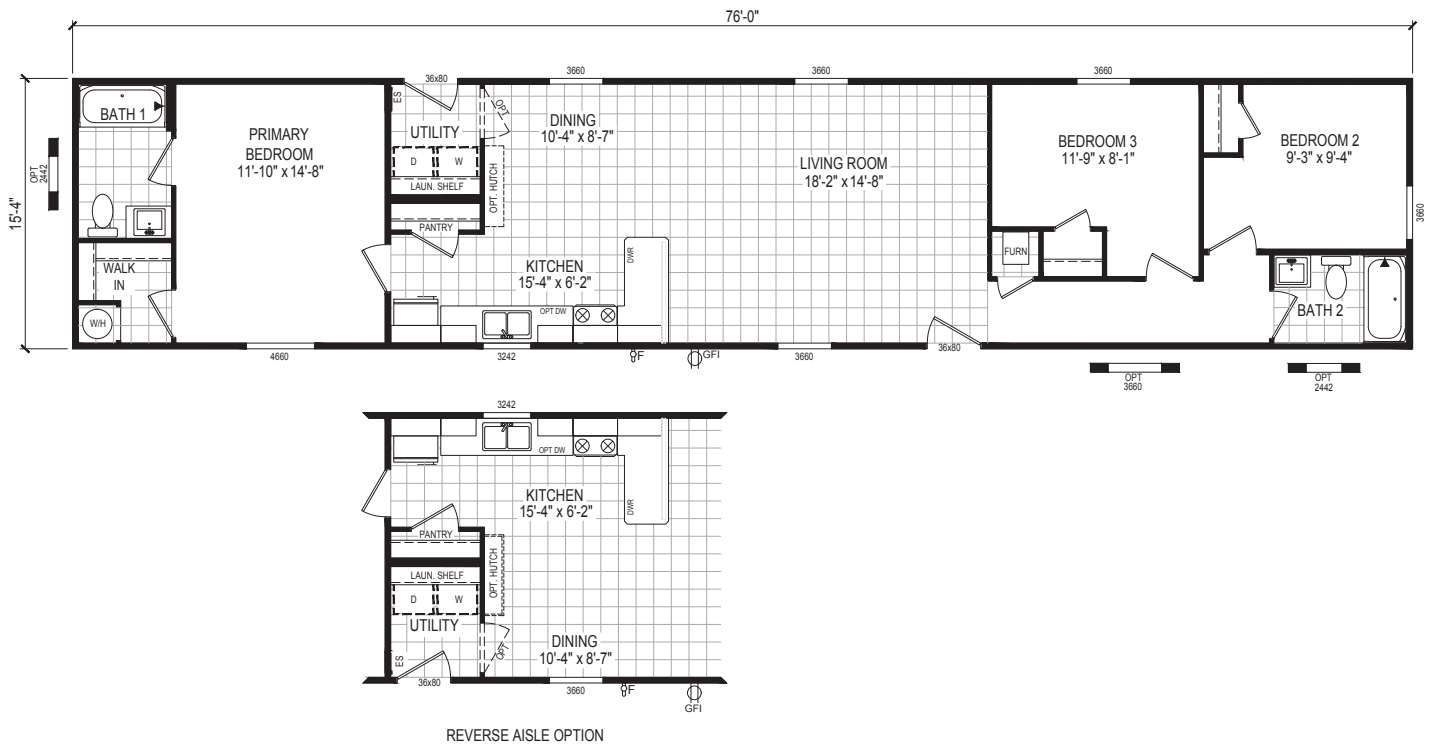




# 7616-711

16x76 | 1,165 SQ FT | 3 beds | 2 baths

\*Shown w/ Optional 6' Dormer





# 7616-714

16x76 | 1,165 SQ FT | 3 beds | 2 baths

\*Shown w/ Optional "B" Exterior PKG w/ Accent Color

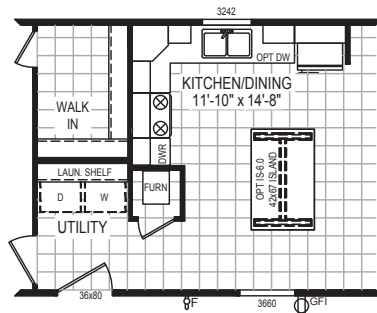
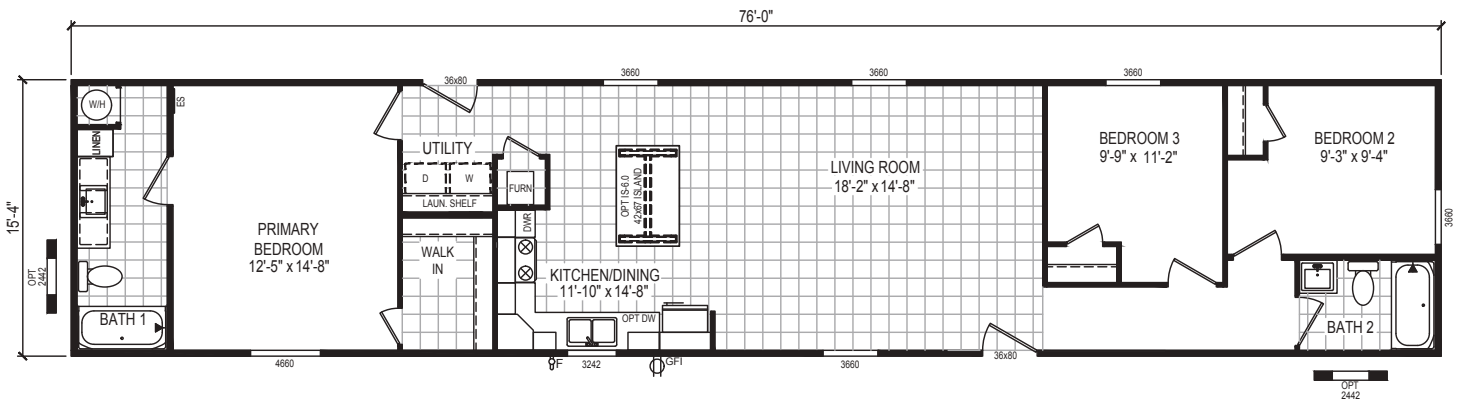




# 7616-779

16x76 | 1,165 SQ FT | 3 beds | 2 baths

\*Shown w/ Optional 6' Dormer

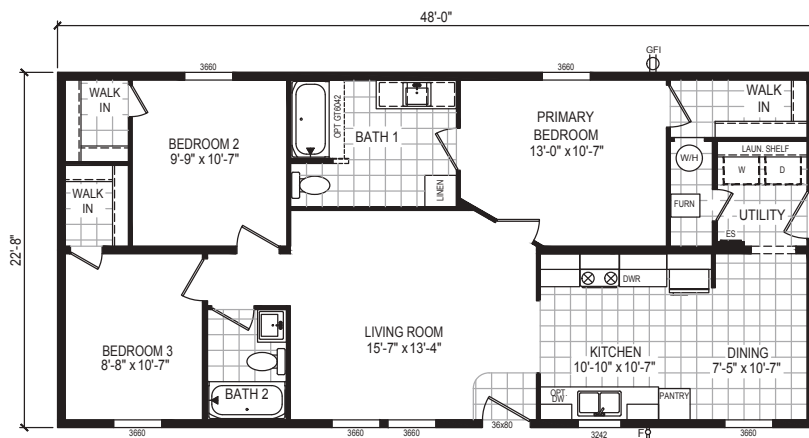


REVERSE AISLE OPTION



# 4824-734

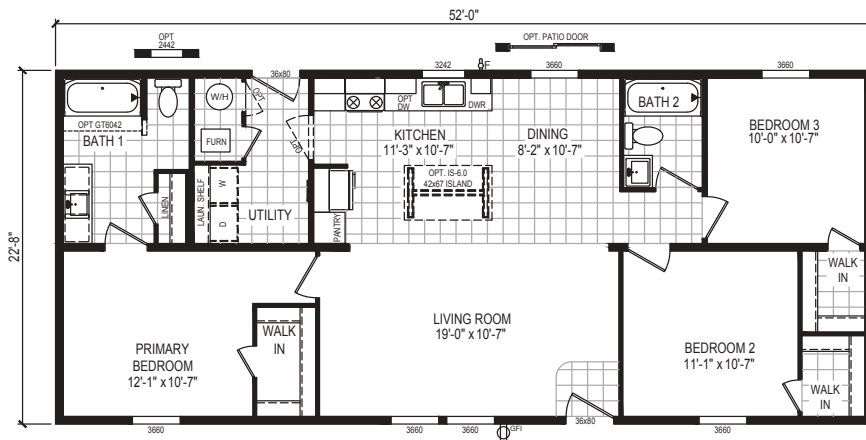
24x48 | 1,108 SQ FT | 3 beds | 2 baths





# 5224-735

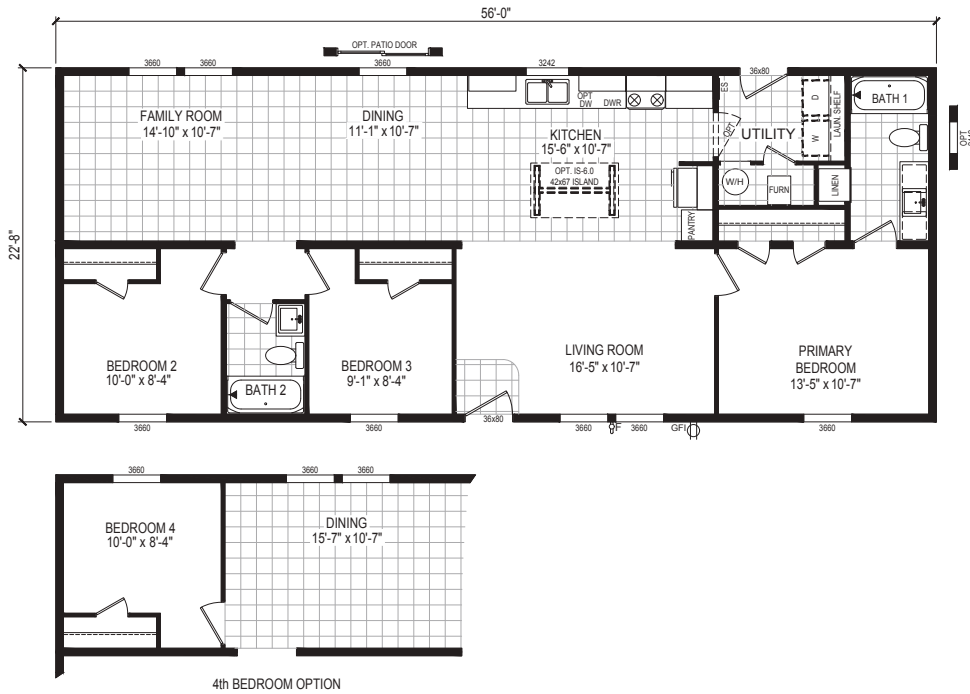
24x52 | 1,179 SQ FT | 3 beds | 2 baths





# 5624-744

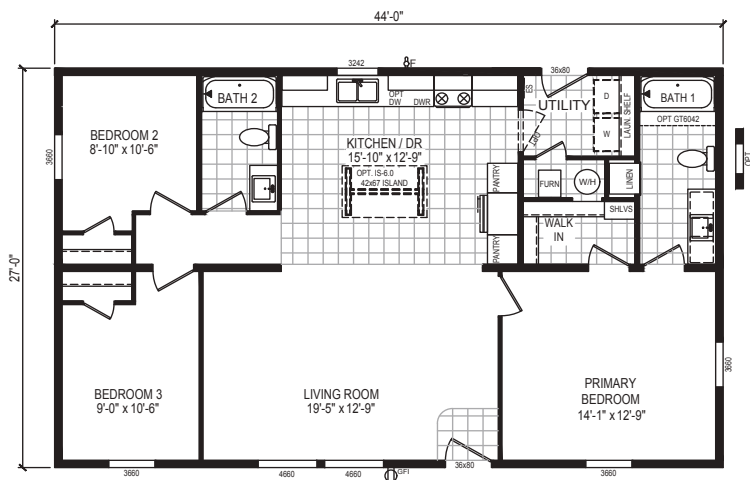
24x56 | 1,269 SQ FT | 3 beds | 2 baths





# 4428-781

28x44 | 1,188 SQ FT | 3 beds | 2 baths

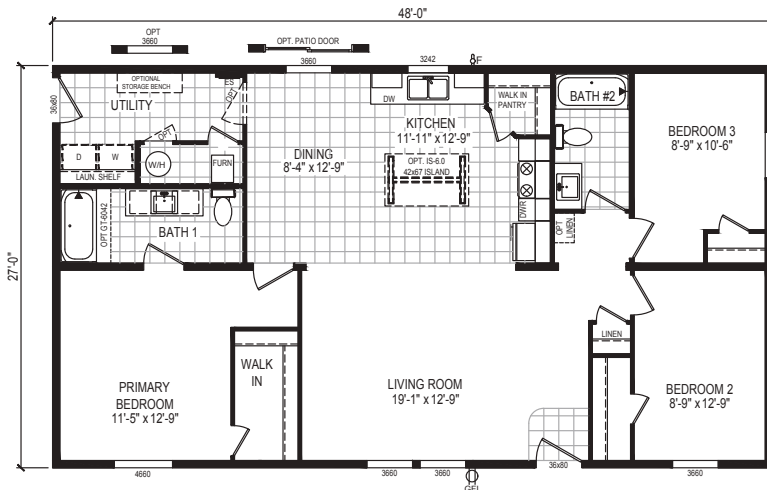




# 4828-746

28x48 | 1,296 SQ FT | 3 beds | 2 baths

\*Shown with options "A" Brow Exterior Package



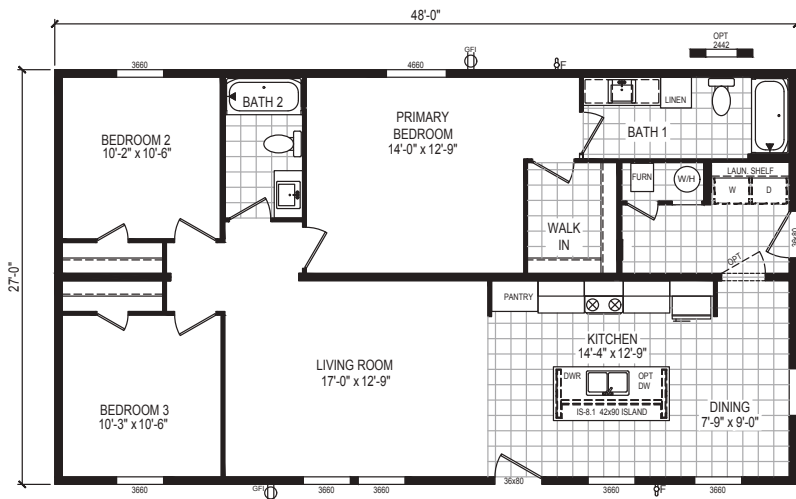




# 4828-782

28x48 | 1,296 SQ FT | 3 beds | 2 baths

\*Shown w/ Optional 10' Dormer

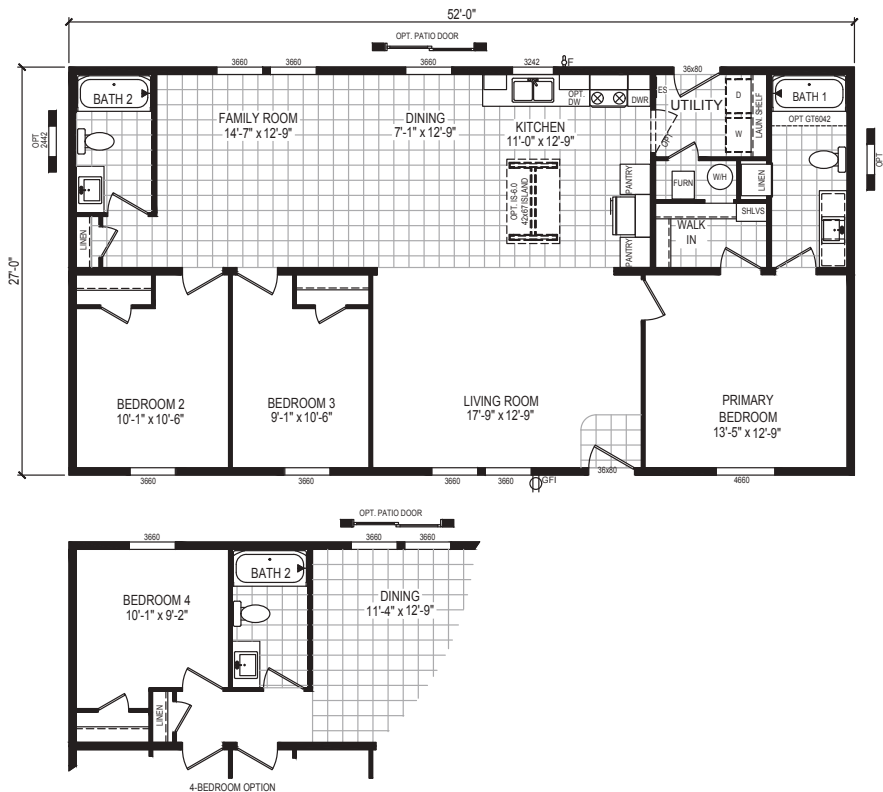






# 5228-784

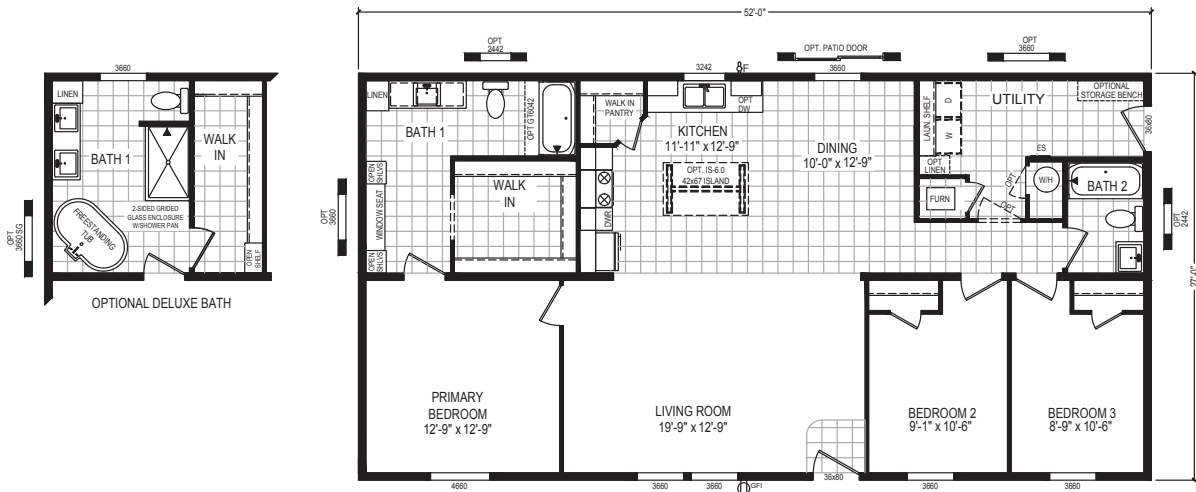
28x52 | 1,404 SQ FT | 3 beds | 2 baths





# 5228-785

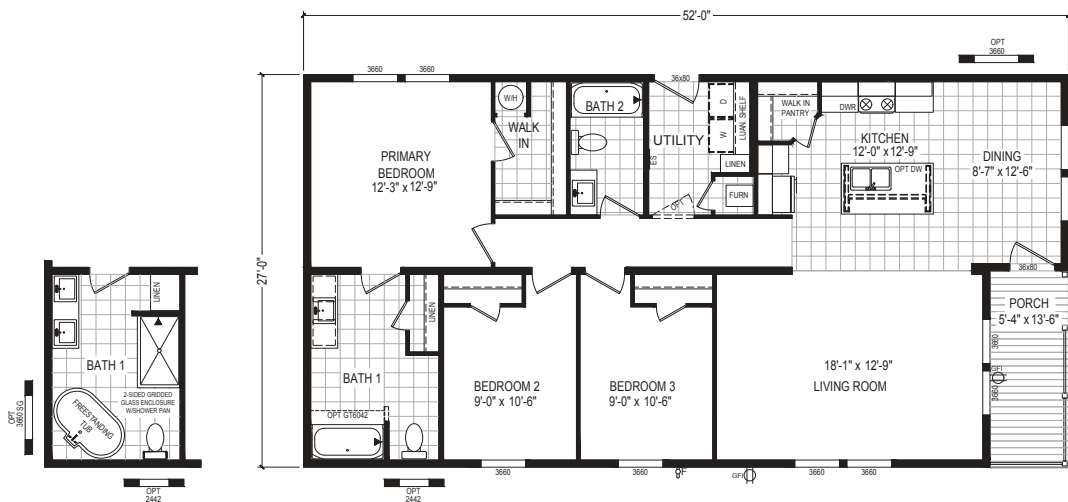
28x52 | 1,404 SQ FT | 3 beds | 2 baths





# 5228-774P

28x52 | 1,332 SQ FT | 3 beds | 2 baths

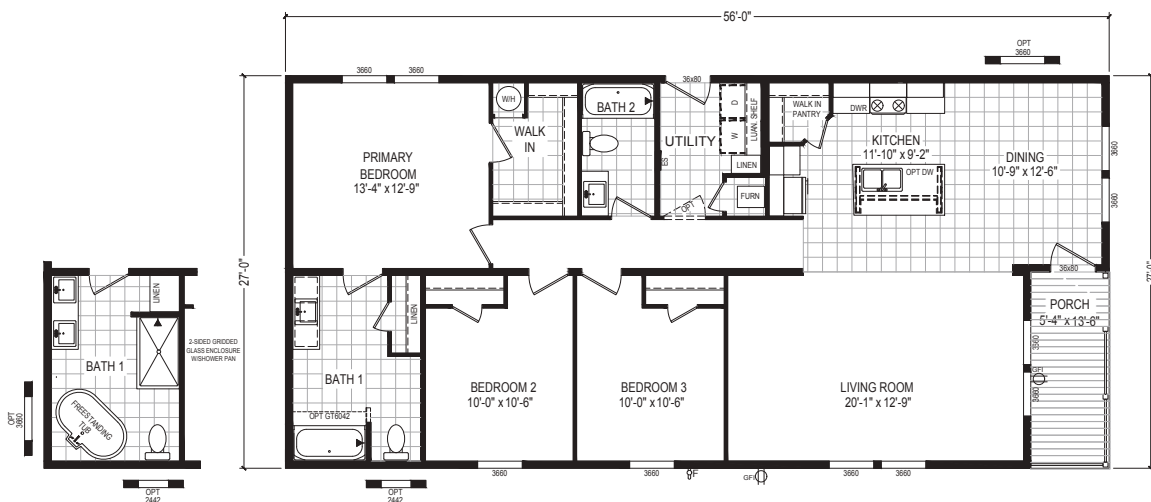


OPTIONAL DELUXE BATH



# 5628-774P

28x56 | 1,440 SQ FT | 3 beds | 2 baths

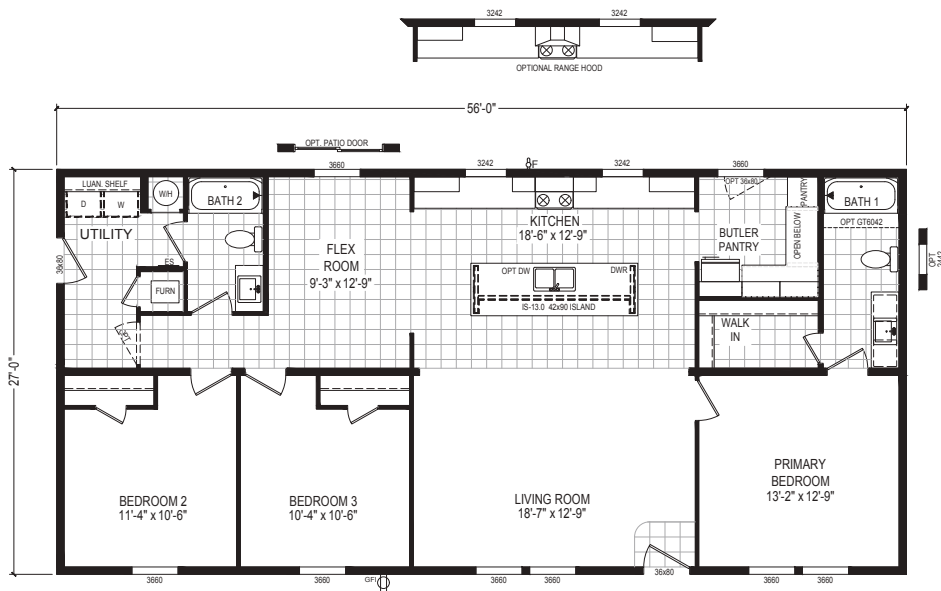


OPTIONAL DELUXE BATH



# 5628-786

28x56 | 1,512 SQ FT | 3 beds | 2 baths

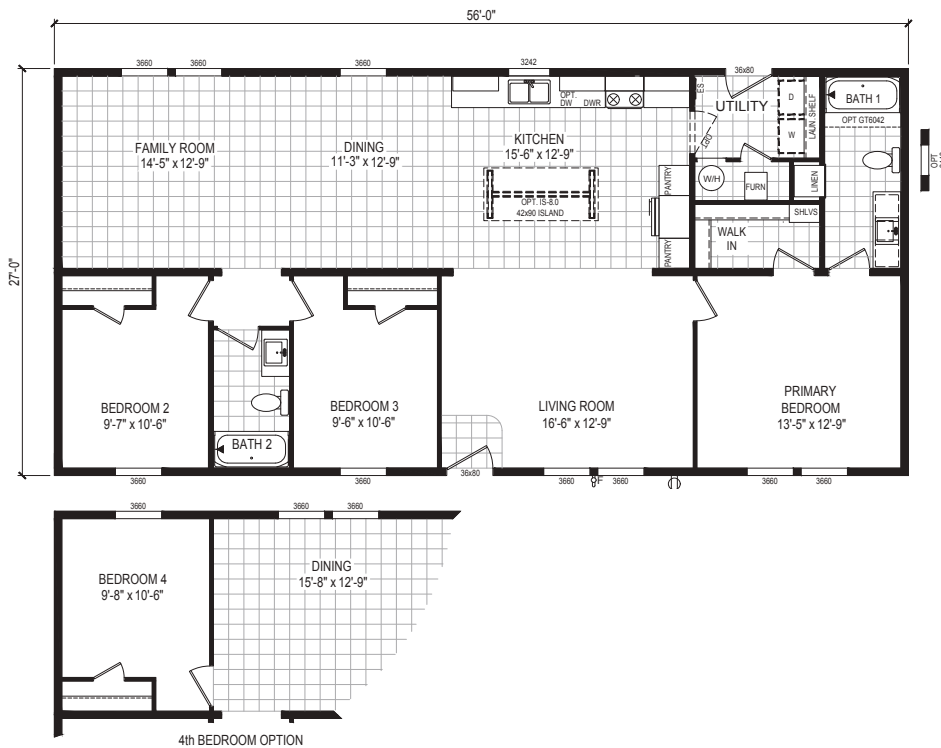




# 5628-787

28x56 | 1,512 SQ FT | 3 beds | 2 baths

\*Shown w/ Optional 10' Dormer





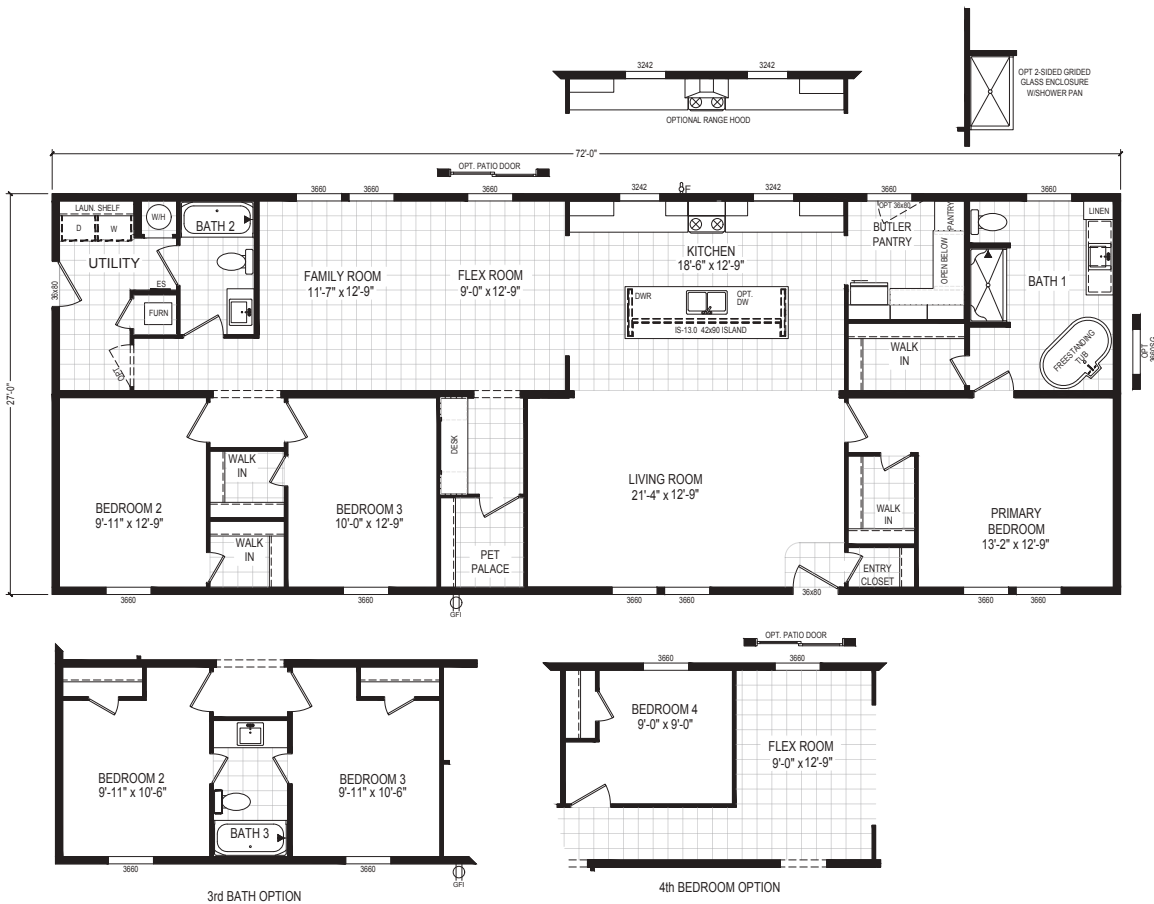




# 7228-789

28x72 | 1,944 SQ FT | 3 beds | 2 baths

\*Shown w/ Optional 20' Dormer



# Optional Hitch End Elevations



**Package B**



**Package C**



**Package D**



**Package E**

*Note: Exterior light fixtures pictured on Hitch End Elevations are optional.  
Hitch End Elevations are available where applicable per floor plan.*

# Optional Dormers



**6' Dormer with Hitch End Exterior "E"**



**10' Dormer**



**20' Dormer**

*Note: Available where applicable per floor plan*









# Wakarusa

66700 S.R. 19  
Wakarusa, IN 46573

Phone: 574.862.4461 | Fax: 574.862.4559  
[www.claytonwakarusa.com](http://www.claytonwakarusa.com)

Because our company has a continuous product update process, specifications, floor plan lay-out and dimensions shown on this literature are subject to change without notice or obligations. Construction and design specifications as well as features presented conceptual, therefore should not be used as actual construction data and may not be offered in all series or models. Our Retailer will provide accurate, up-to-date information on available options and specifications for your home.