

2023



*Mojave Series*

*Homes*

**Single**



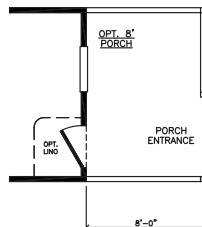
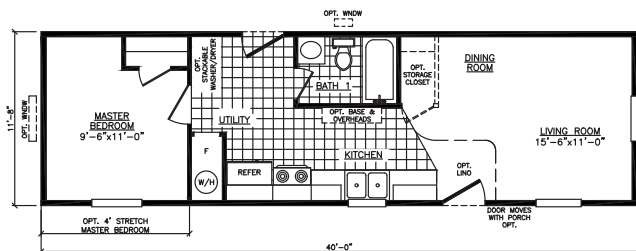
**DREAM IT. DESIGN IT. BUILD IT. LOVE IT.**

*Your Adventure begins here.*

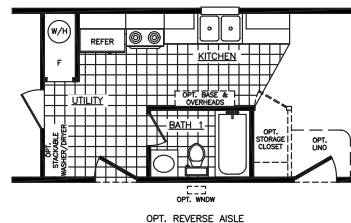
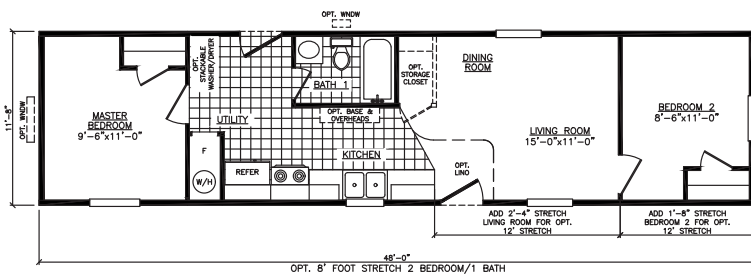
Welcome to Adventure Homes. We offer you the best value in manufactured housing in today's market. Our homes are built with unbelievable eye appeal & product standards are often above and beyond HUD code. Additionally, we offer award winning sales, service and production teams to enhance your value even more. We look forward to assisting you and welcoming you into our family of satisfied retailers and customers!

# The Lincoln

**Model 1401S**  
**1 Bedroom • 1 Bath • Floor Size 467 sq. ft.**



OPT. 4' STRETCH MASTER BEDROOM  
 OPT. 8' STRETCH 2 BEDROOM/1 BATH  
 OPT. 12' STRETCH 2 BEDROOM/LIVING ROOM

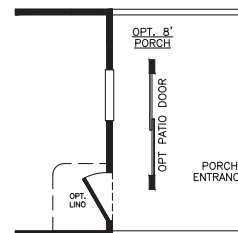
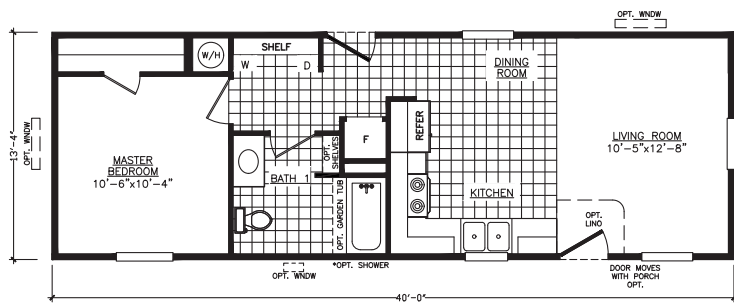


OPT. 8' FOOT STRETCH 2 BEDROOM/1 BATH

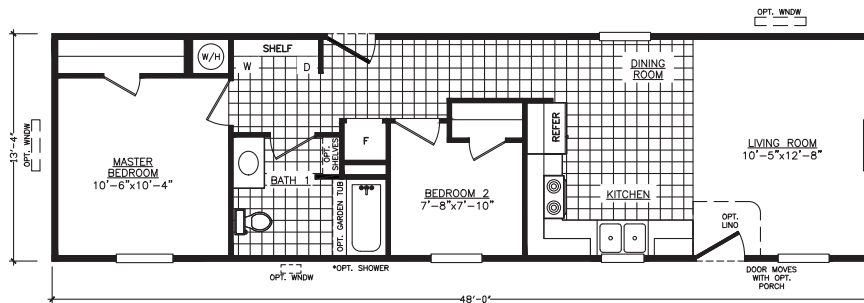
OPT. REVERSE AISLE

# The Vantage

**Model 2401LL**  
**1 Bedroom • 1 Bath • Floor Size 534 sq. ft.**



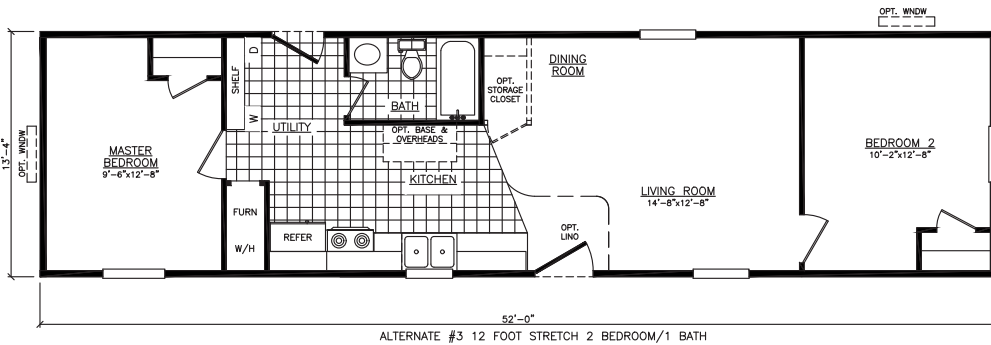
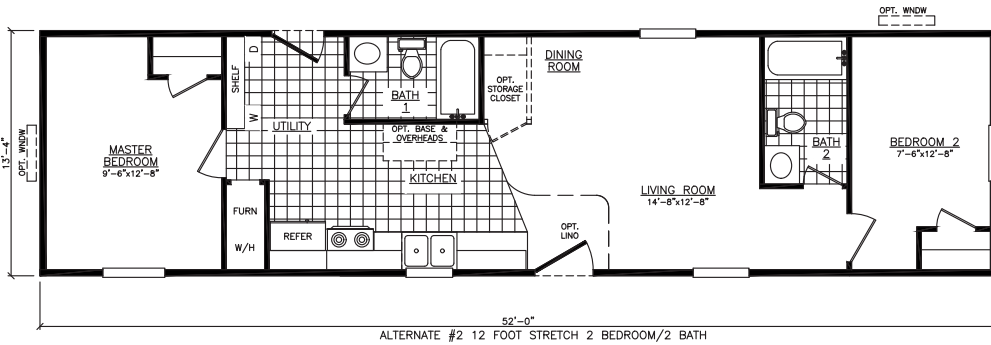
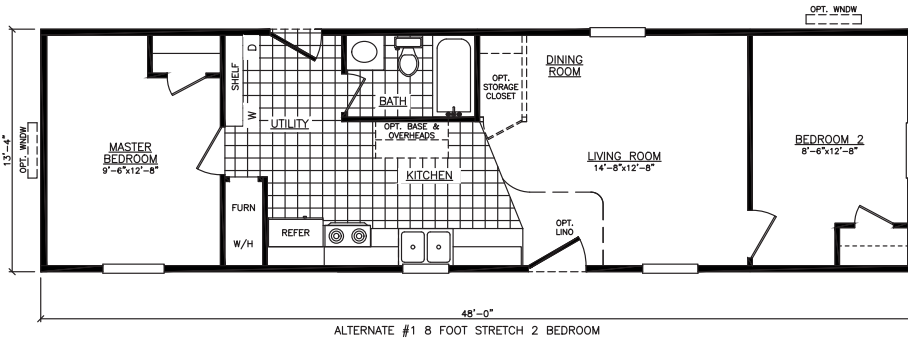
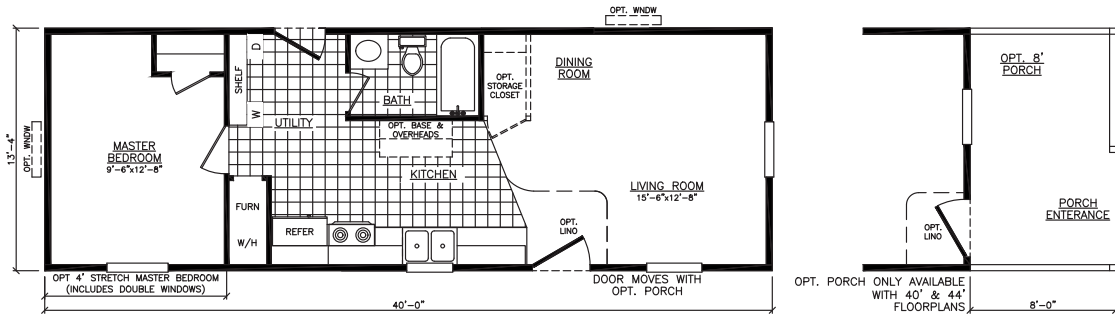
\*REVERSE AISLE AVAILABLE



OPT. 8' STRETCH WITH 2ND BEDROOM

# The Sequoia

**Model 2401S**  
**1 Bedroom • 1 Bath • Floor Size 534 sq. ft.**

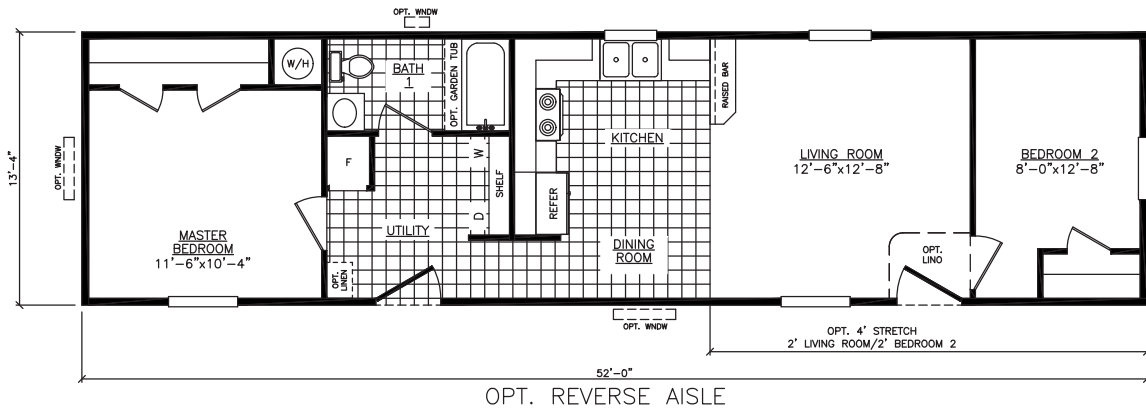
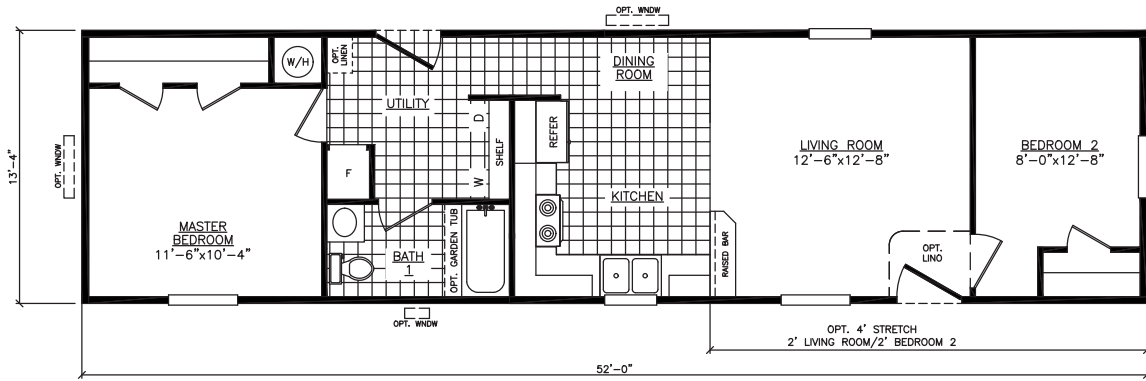


**Every home built by Adventure is constructed with premium materials in a climate-controlled enclosed building facility. This helps eliminate weather-damaged building supplies and weather-related delays. These state-of-the-art facilities ensure precise and quality construction. All Adventure homes meet, and in many cases exceed HUD code.**

**Adventure Homes Mojave Series can be customized to fit your every day needs and wants!**

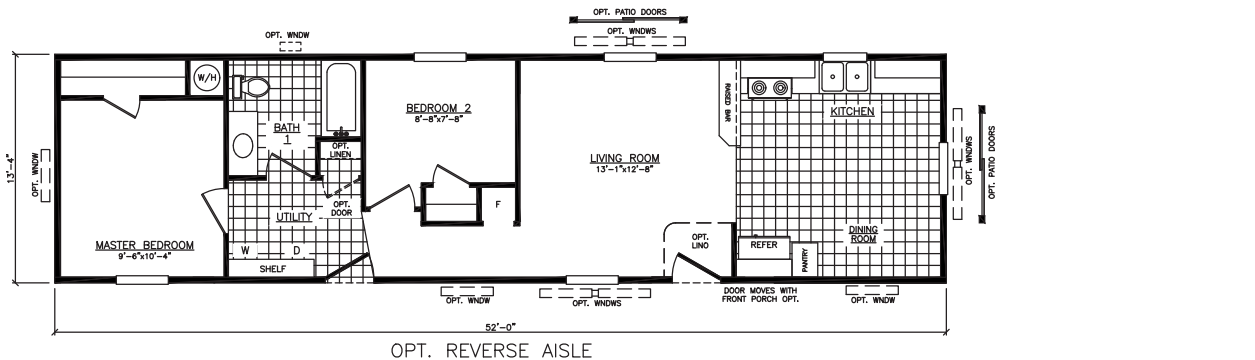
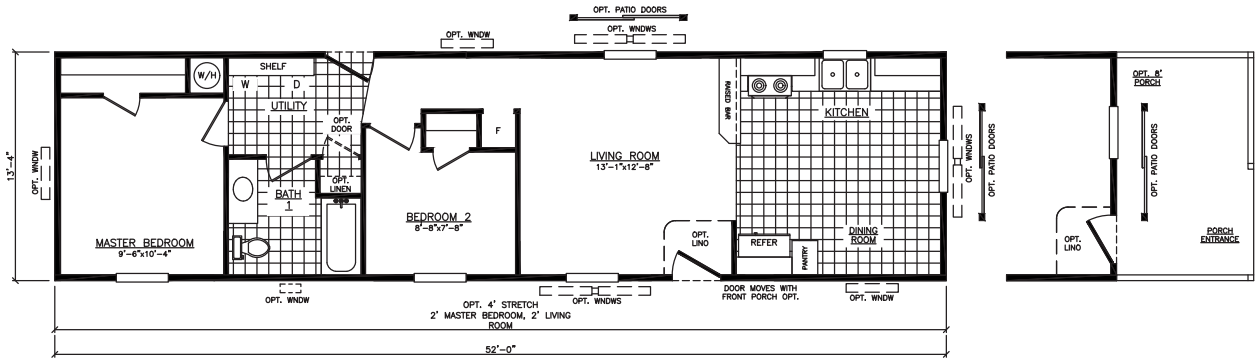
# The Sierra

**Model 2522C**  
**2 Bedroom • 1 Bath • Floor Size 694 sq. ft.**



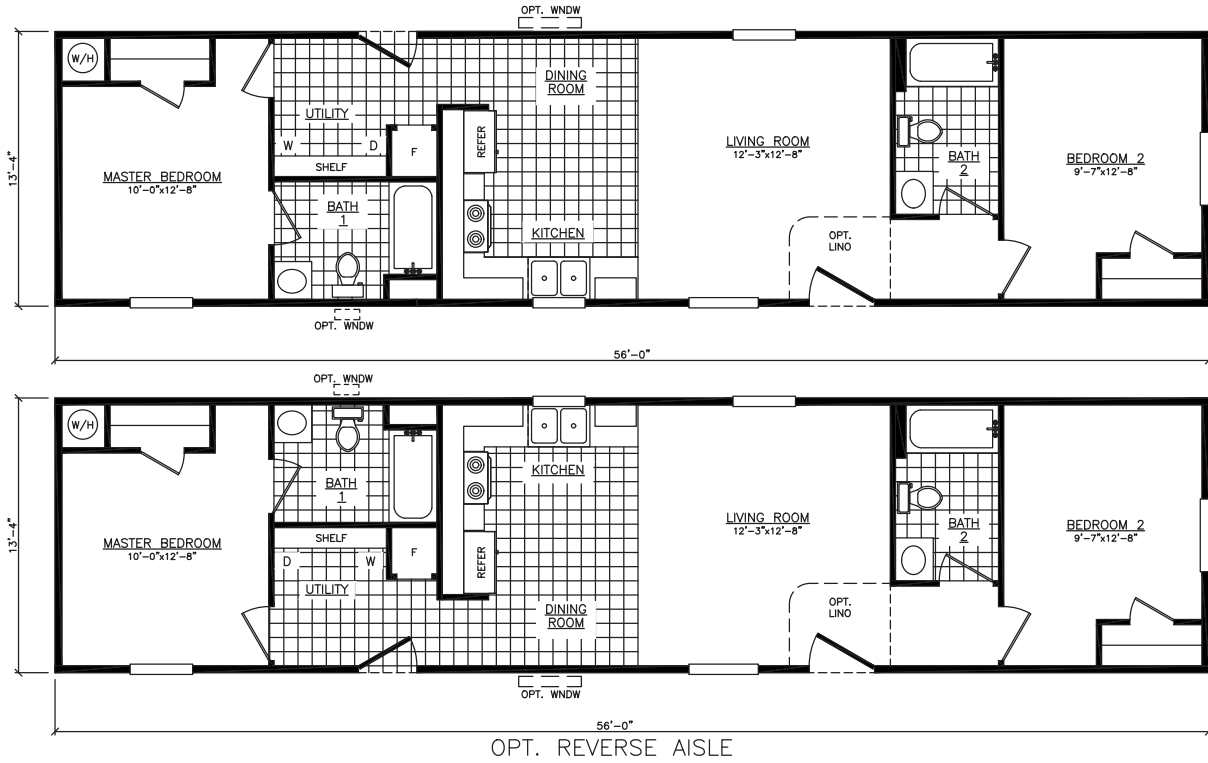
# The Northwest

**Model 2522W**  
**2 Bedroom • 1 Bath • Floor Size 694 sq. ft.**



# The Omaha

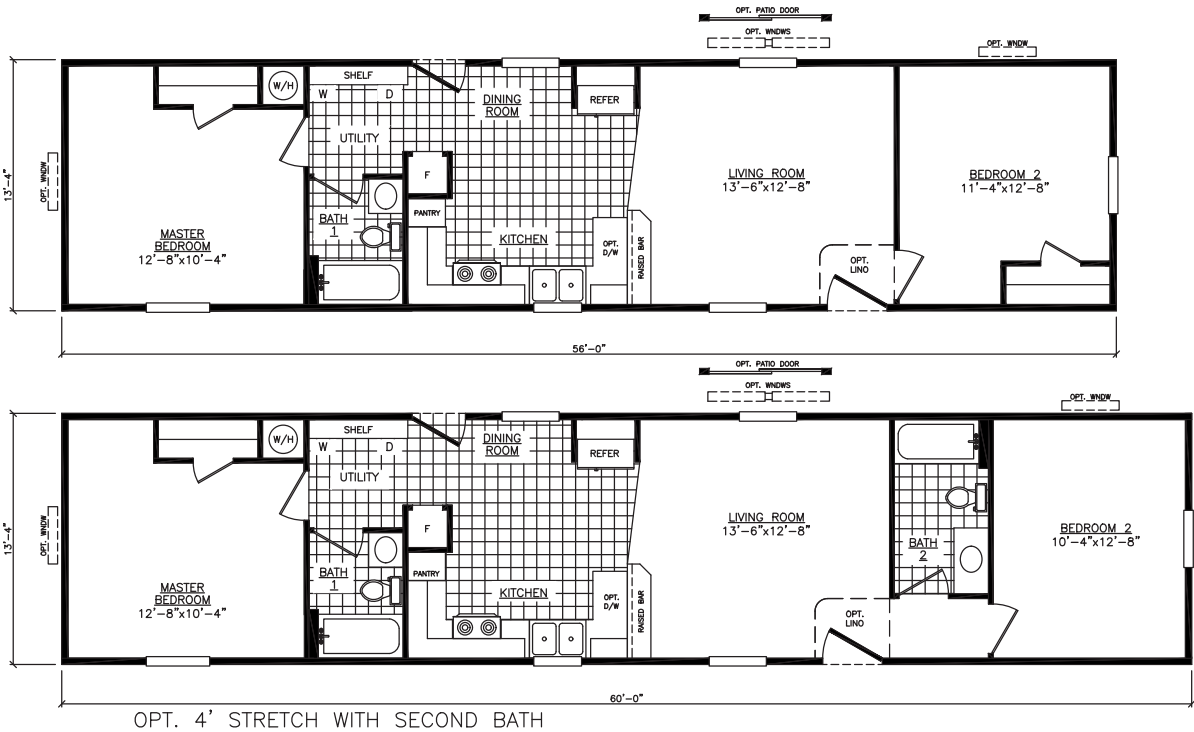
**Model 2562U**  
**2 Bedroom • 2 Bath • Floor Size 747 sq. ft.**



# The Totem

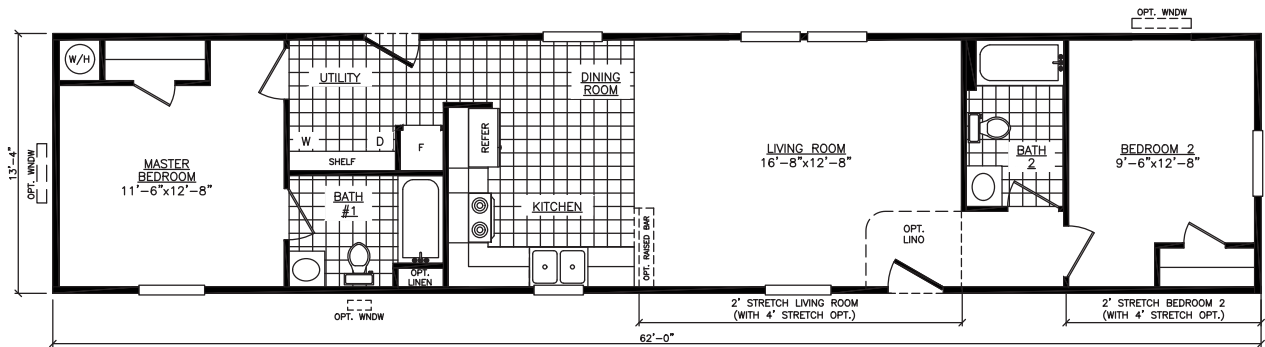
**Model 2562Z**  
**2 Bedroom • 1 Bath • Floor Size 747 sq. ft.**

5

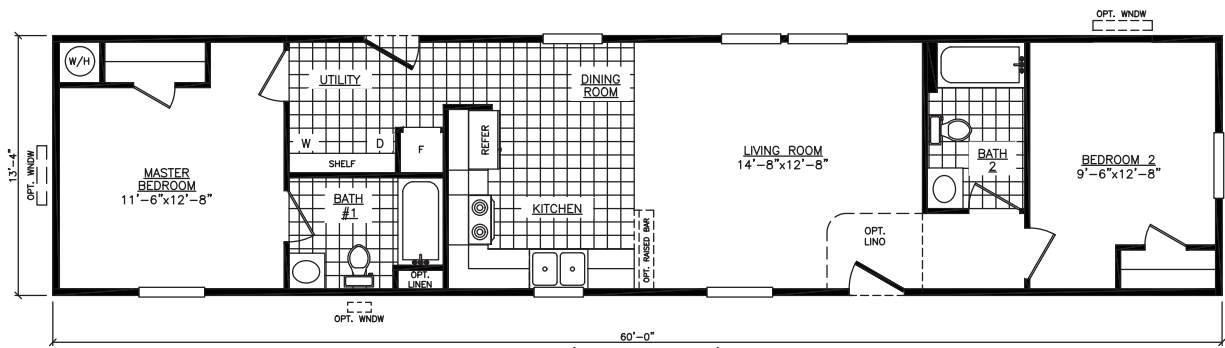


# The Madison

**Model 2622X**  
**2 Bedroom • 2 Bath • Floor Size 827 sq. ft.**

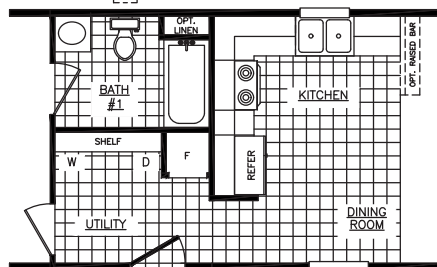
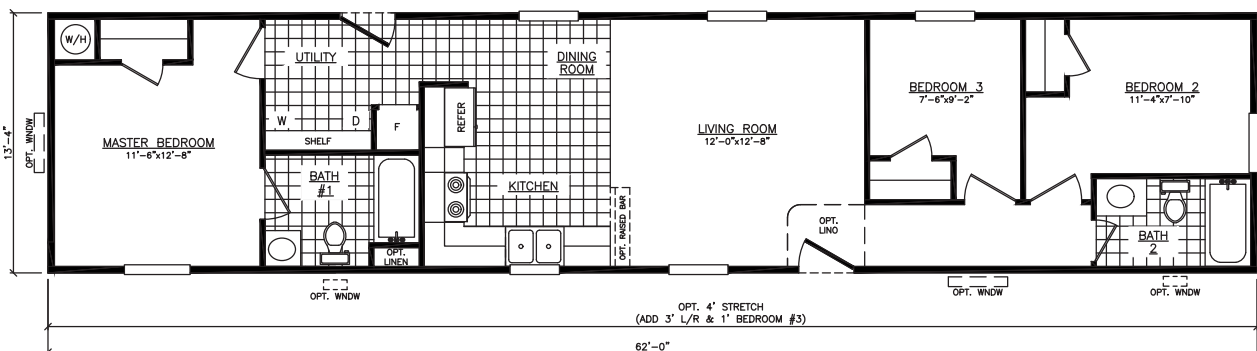


\*AVAILABLE WITH REVERSE AISLE



# The Prairie

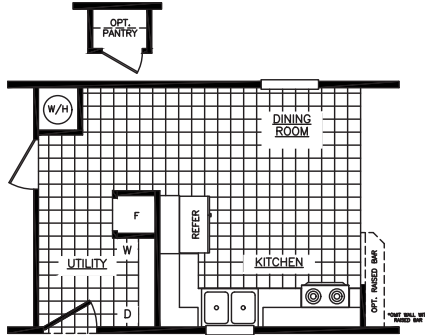
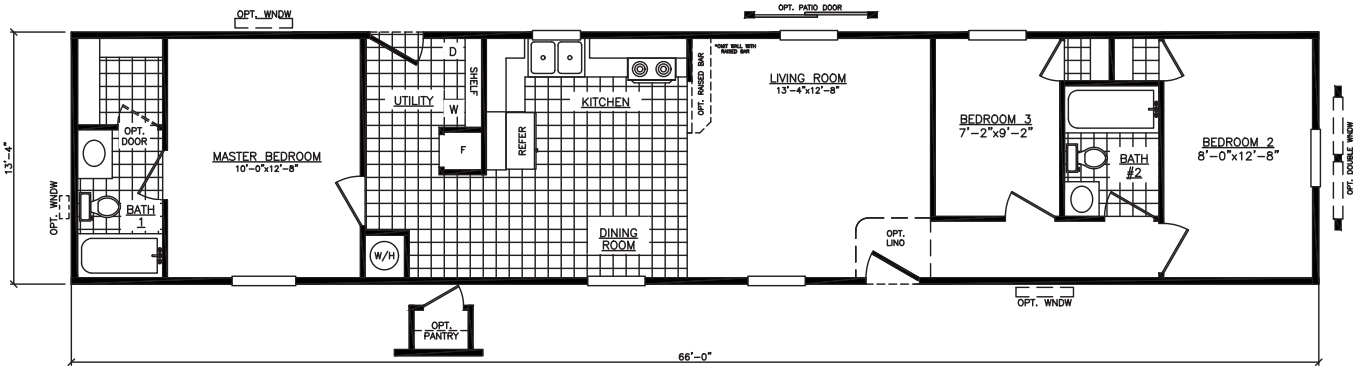
**Model 2623X**  
**3 Bedroom • 2 Bath • Floor Size 827 sq. ft.**



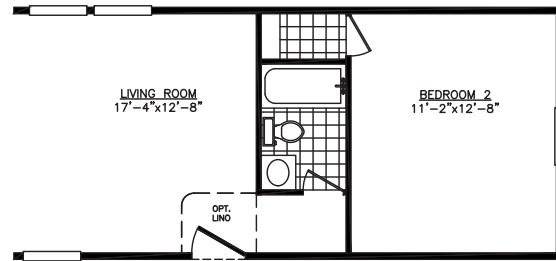
OPT. REVERSE AISLE

# The *Timberland*

**Model 2663B**  
**3 Bedroom • 2 Bath • Floor Size 880 sq. ft.**



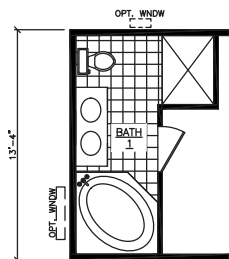
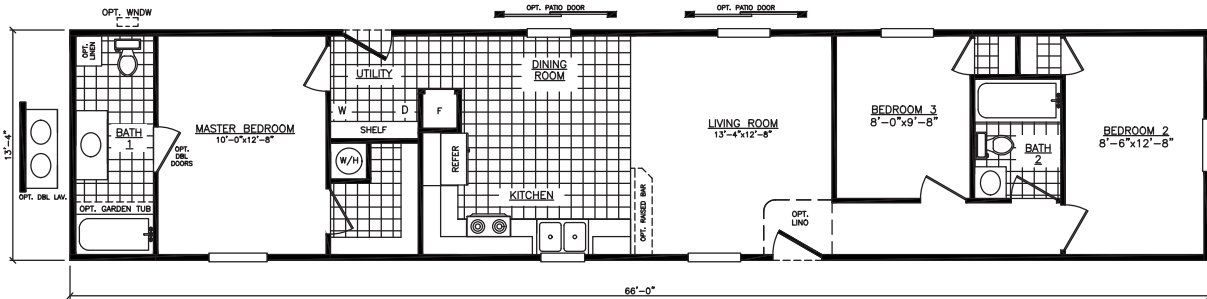
OPT. REVERSE AISLE



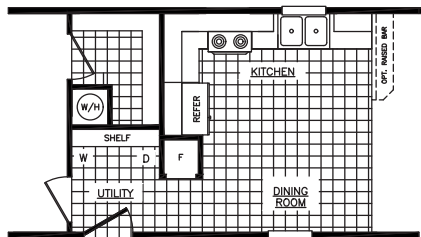
OPT. 2 BEDROOM

# The *Morrison*

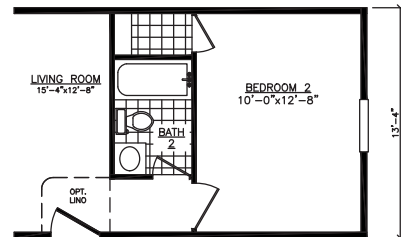
**Model 2663F**  
**3 Bedroom • 2 Bath • Floor Size 880 sq. ft.**



OPT. GLAMOUR BATH



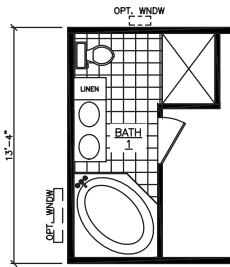
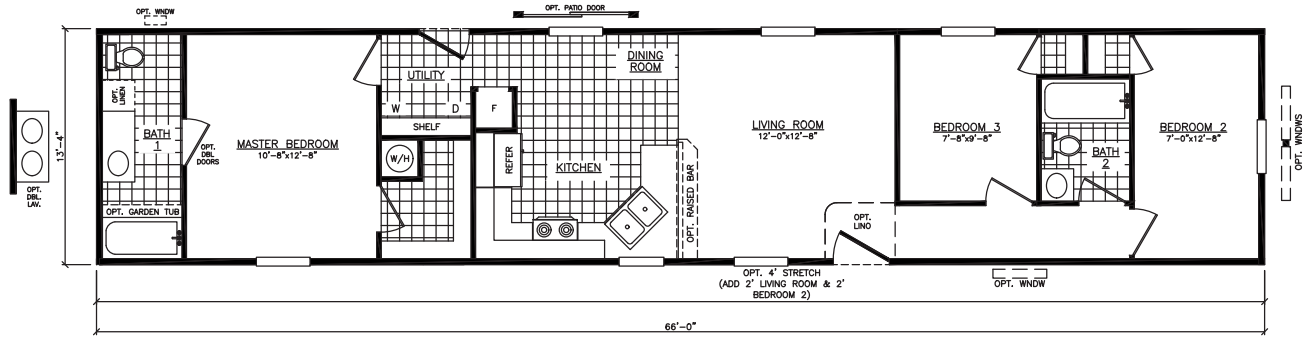
OPT. REVERSE AISLE



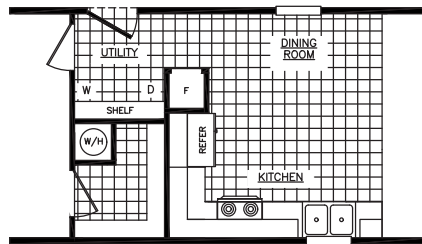
OPT. 2 BEDROOM

# The Telton

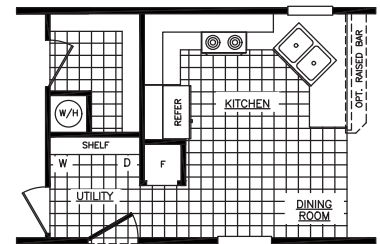
**Model 2663W**  
**3 Bedroom • 2 Bath • Floor Size 880 sq. ft.**



OPT. GLAMOUR BATH



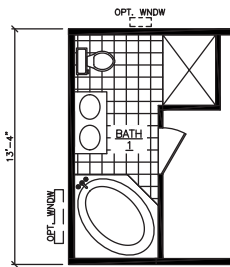
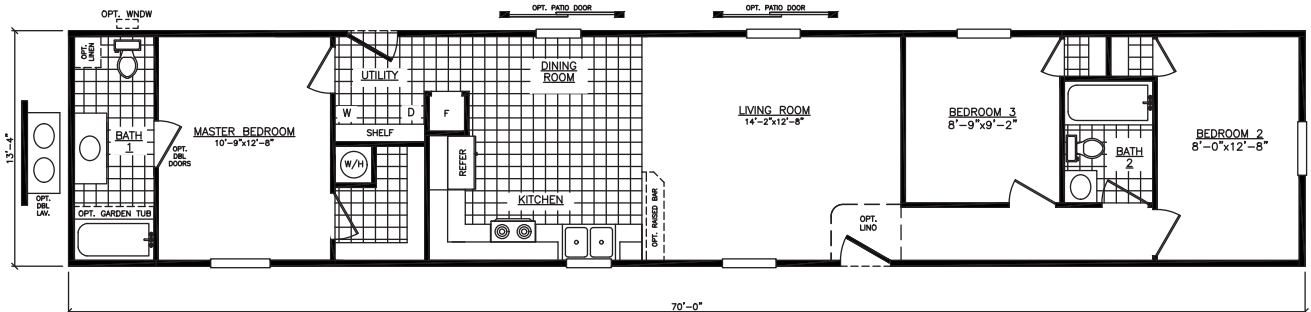
ALTERNATE KITCHEN



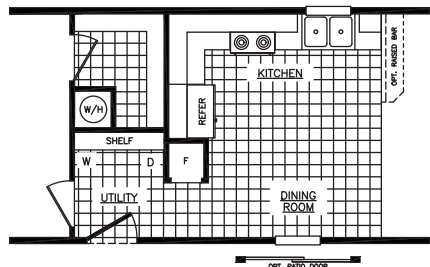
OPT. REVERSE AISLE

# The Riverview

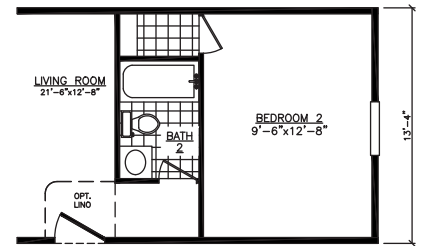
**Model 2703D**  
**3 Bedroom • 2 Bath • Floor Size 934 sq. ft.**



OPT. GLAMOUR BATH



OPT. REVERSE AISLE

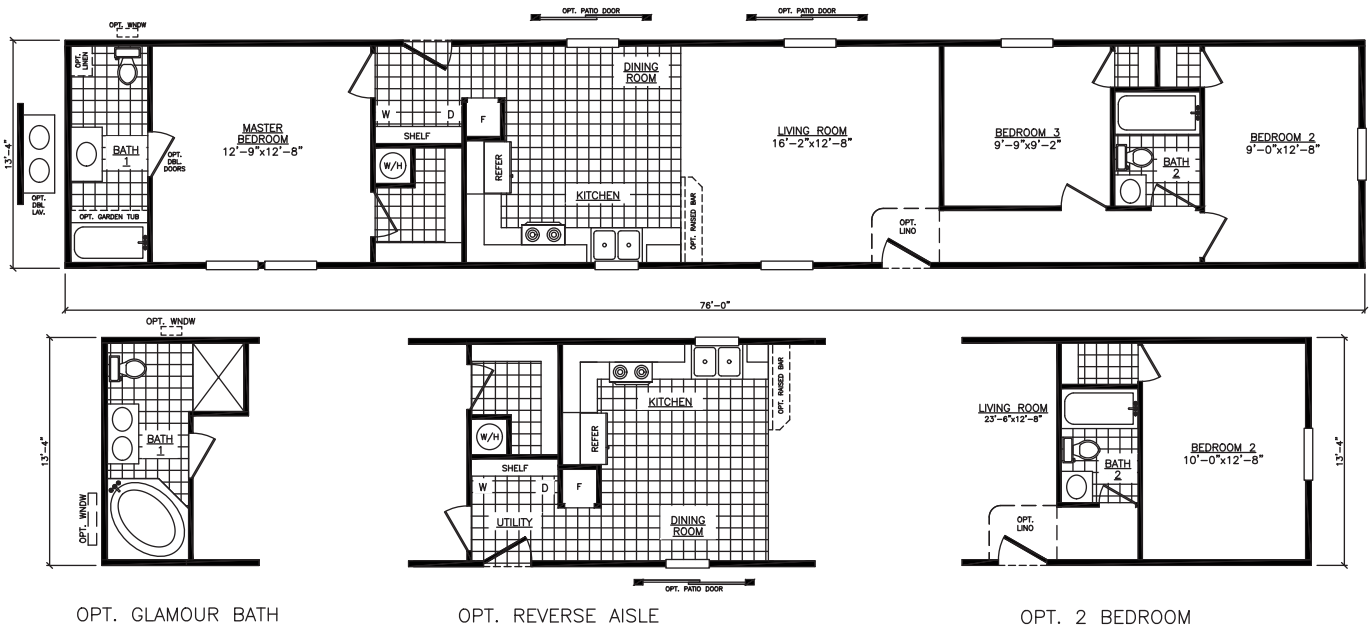


OPT. 2 BEDROOM



# The Sterling

**Model 2763D**  
**3 Bedroom • 2 Bath • Floor Size 1,014 sq. ft.**



# The Vista

**Model 6522W**  
**2 Bedroom • 1 Bath • Floor Size 806 sq. ft.**



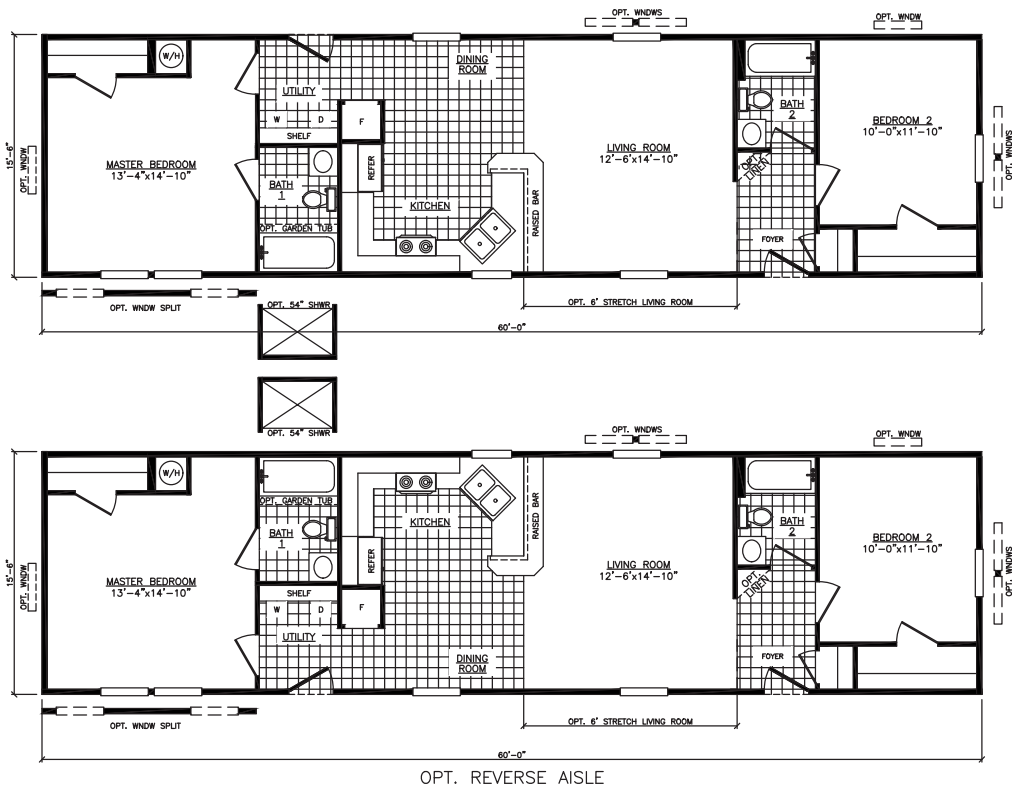
# The Pikeville

**Model 6562N**  
**2 Bedroom • 2 Bath • Floor Size 868 sq. ft.**



# The Tippecanoe

**Model 1660-2**  
**2 Bedroom • 2 Bath • Floor Size 930 sq. ft.**



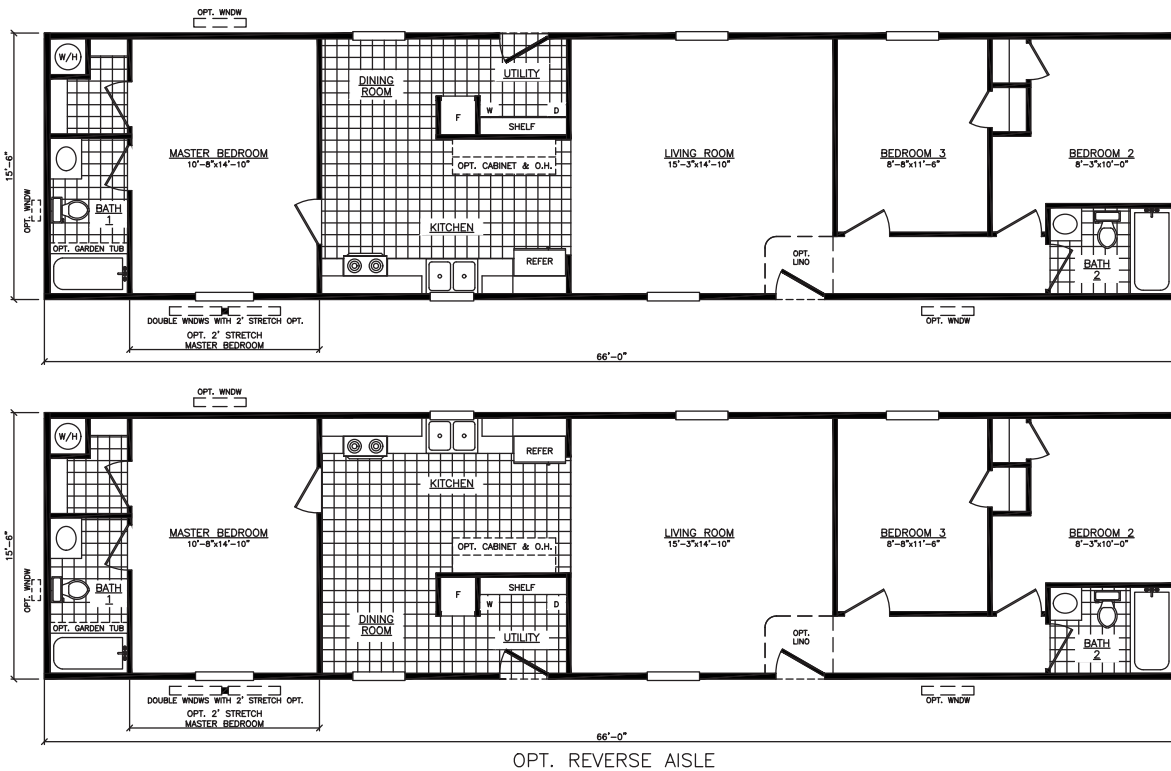
# The Conestoga

**Model 6603U**  
**3 Bedroom • 2 Bath • Floor Size 930 sq. ft.**



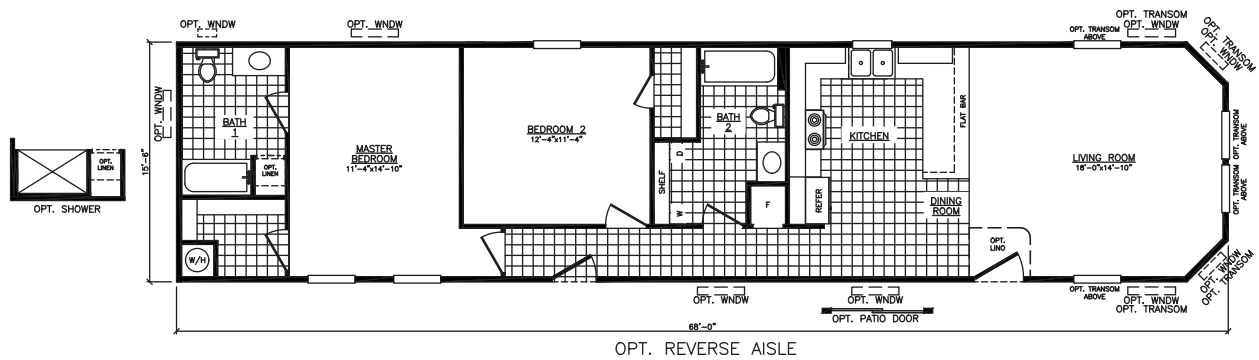
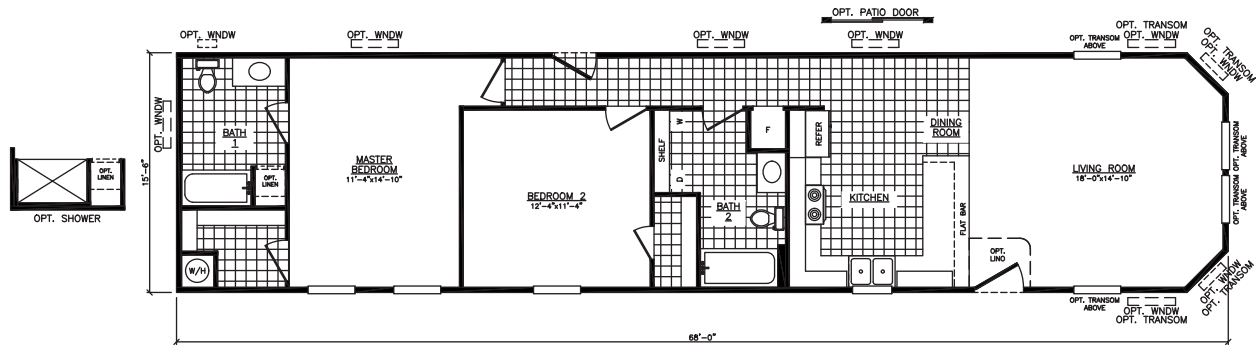
# The Senoran

**Model 6663X**  
**3 Bedroom • 2 Bath • Floor Size 1,023 sq. ft.**

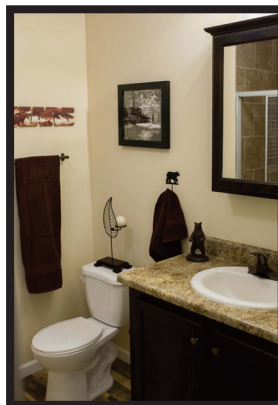


# The Hudson

**Model 6682S**  
**2 Bedroom • 2 Bath • Floor Size 1,054 sq. ft.**



OPT. REVERSE AISLE



# The Sylvan

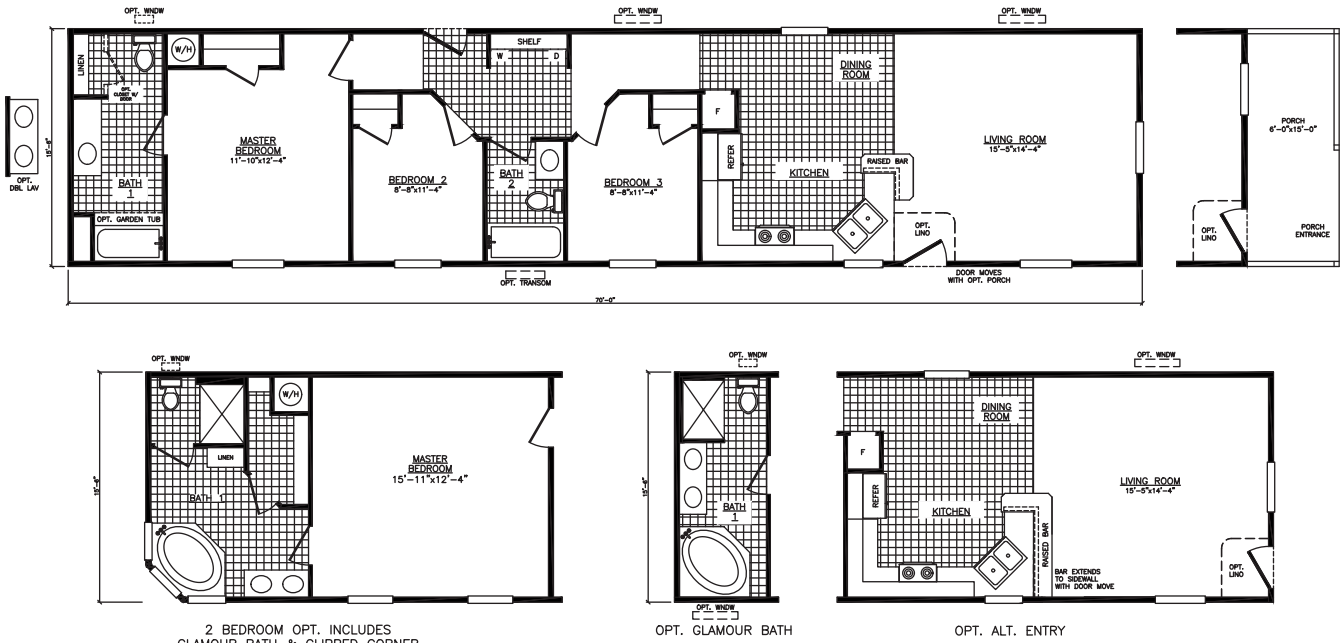
**Model 6683L**  
**3 Bedroom • 2 Bath • Floor Size 1,054 sq. ft.**



# The Winchester

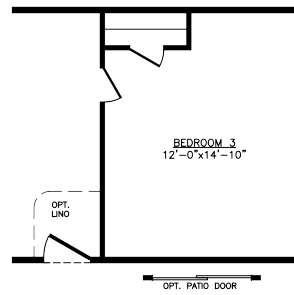
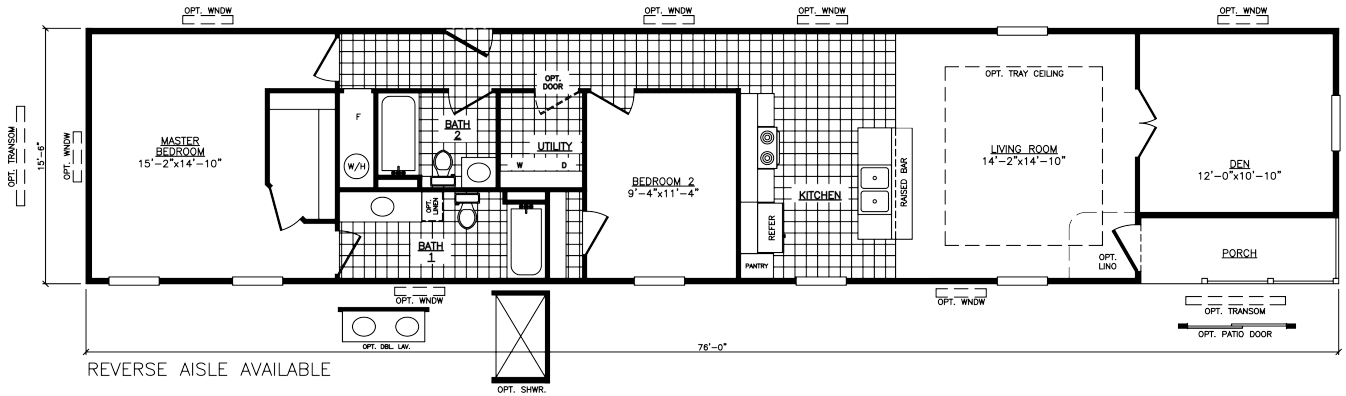
**Model 6703F**  
**3 Bedroom • 2 Bath • Floor Size 1,085 sq. ft.**

13

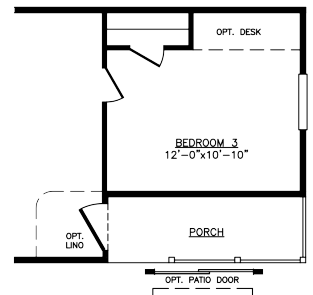


# The Westgate

**Model 6762L**  
**2 Bedroom • 2 Bath • Floor Size 1,178 sq. ft.**



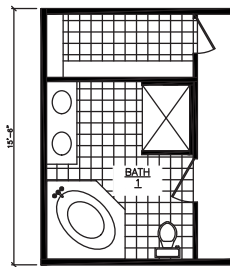
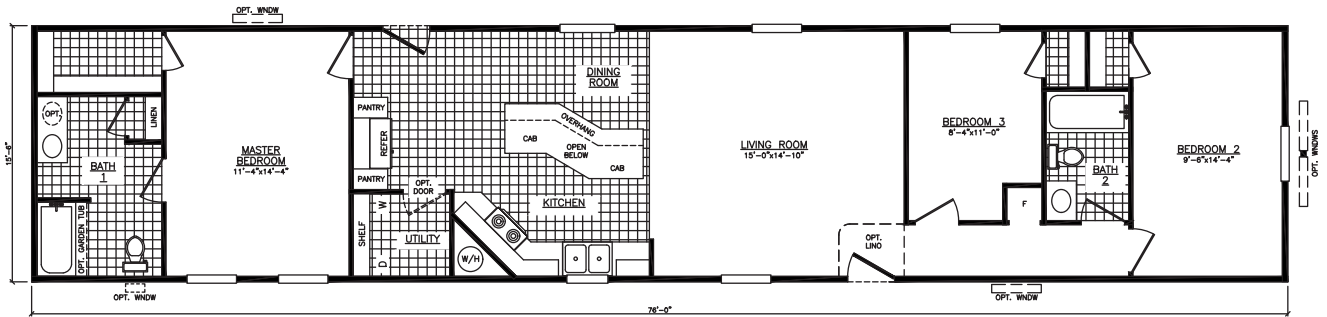
OPT. 3 BEDROOM



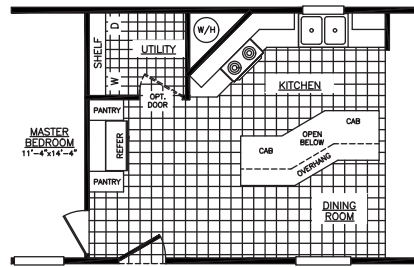
OPT. 3 BEDROOM & PORCH

# The Southwest

**Model 1676-2**  
**3 Bedroom • 2 Bath • Floor Size 1,178 sq. ft.**



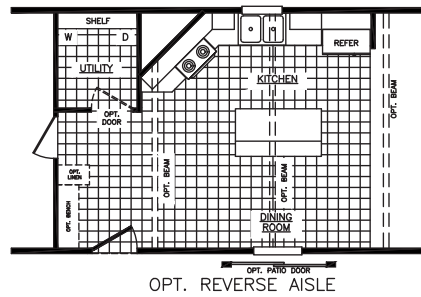
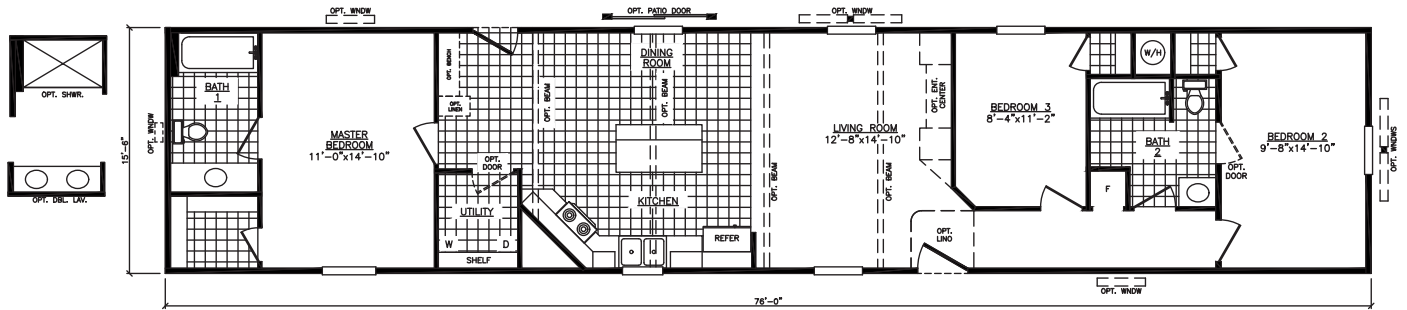
OPT. GLAMOUR BATH



OPT. REVERSE AISLE

# The Landmark

**Model 6763AA**  
**3 Bedroom • 2 Bath • Floor Size 1,178 sq. ft.**

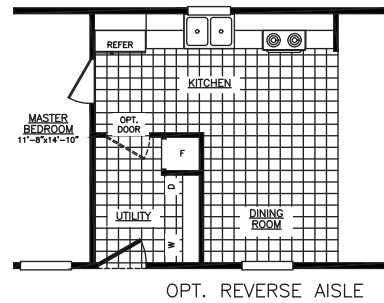
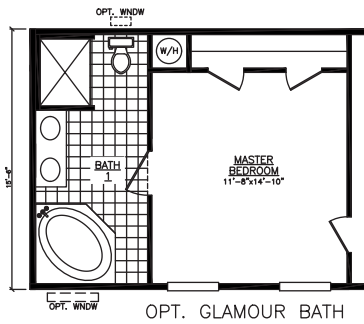
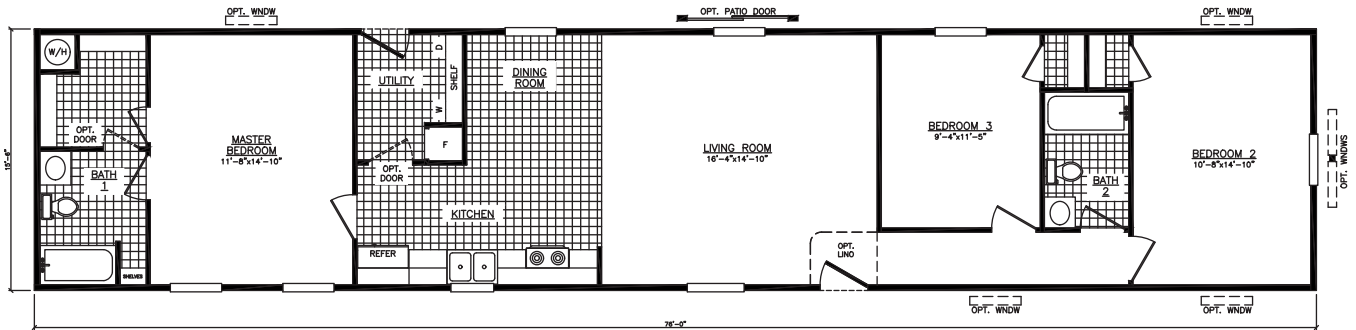


15



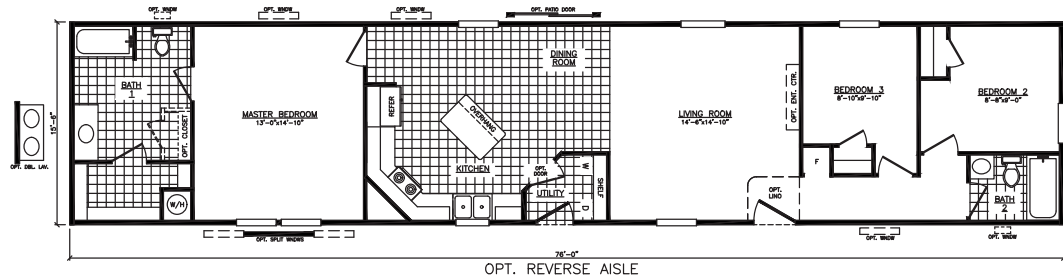
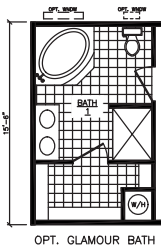
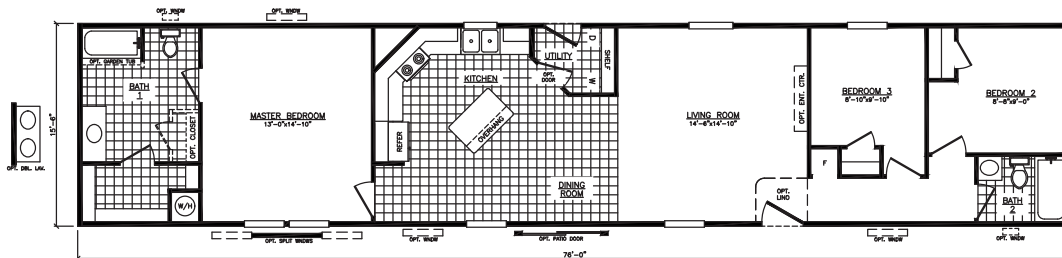
# The Melody

**Model 6763B**  
**3 Bedroom • 2 Bath • Floor Size 1,178 sq. ft.**



# The Phoenix

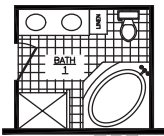
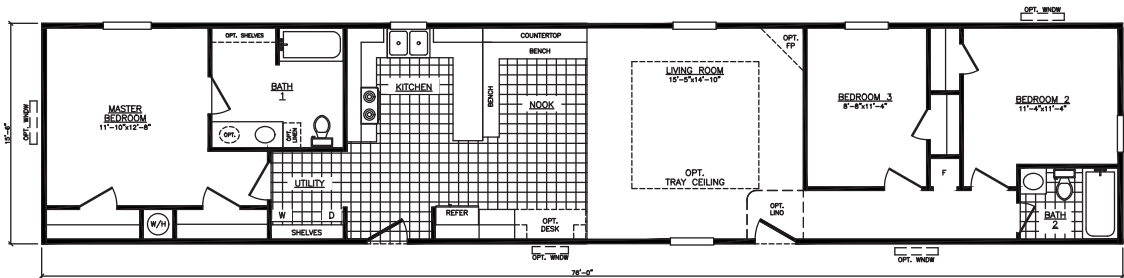
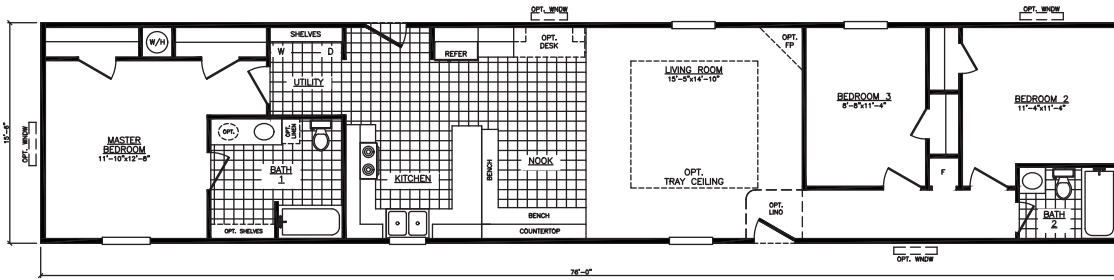
**Model 6763H**  
**3 Bedroom • 2 Bath • Floor Size 1,178 sq. ft.**





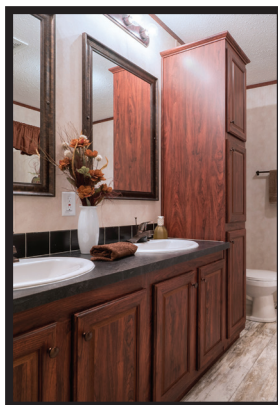
# The Biscayne

**Model 6763G**  
**3 Bedroom • 2 Bath • Floor Size 1,178 sq. ft.**



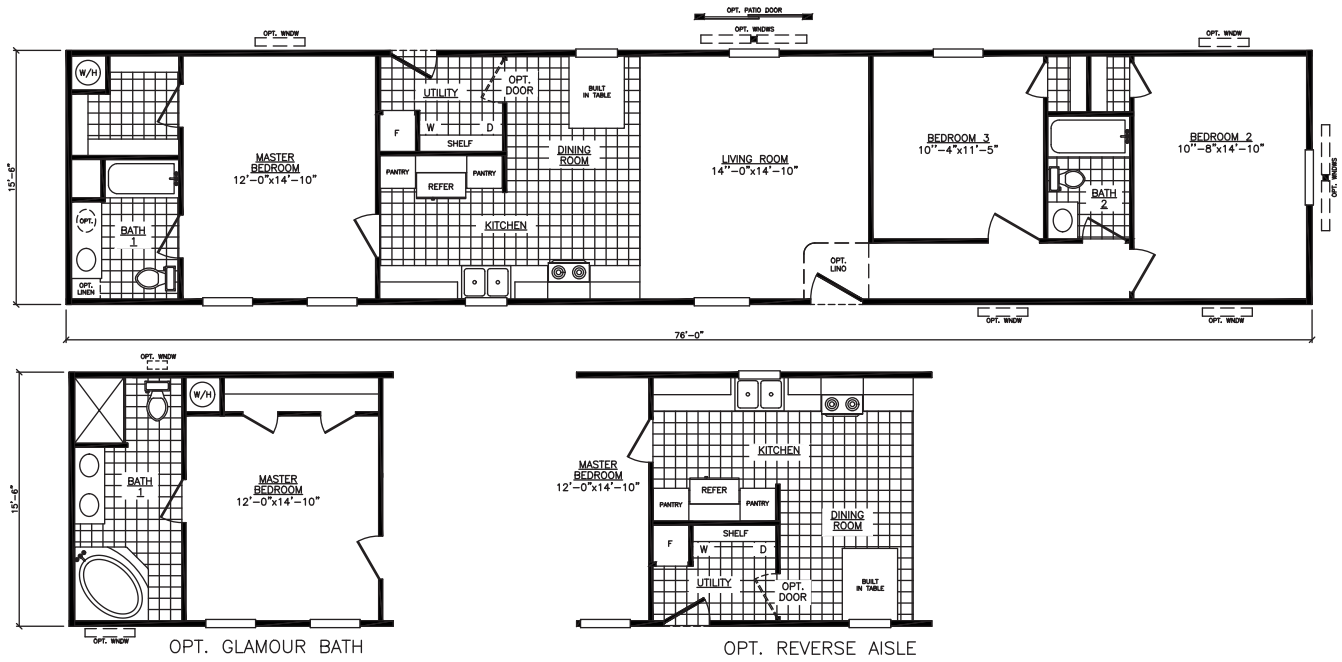
OPT. GLAMOUR BATH

OPT. REVERSE AISLE



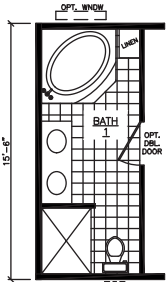
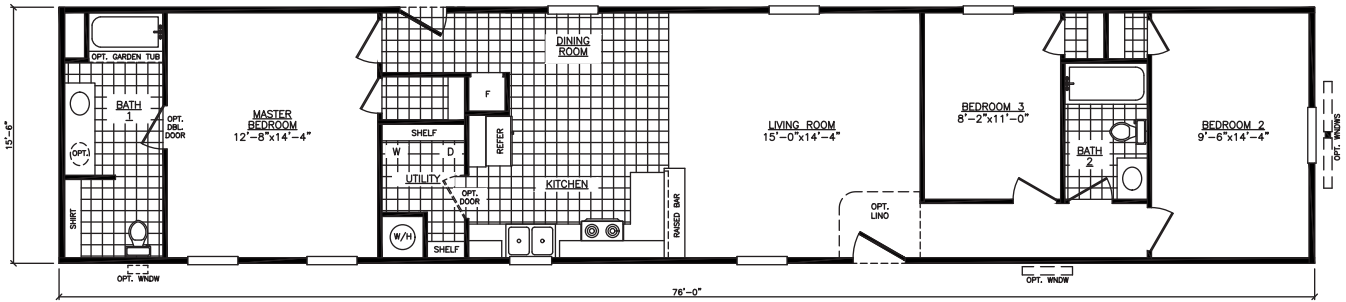
# The Convoy

**Model 6763R**  
**3 Bedroom • 2 Bath • Floor Size 1,178 sq. ft.**

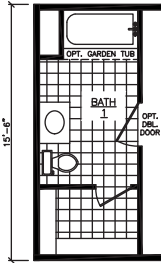


# The Independence

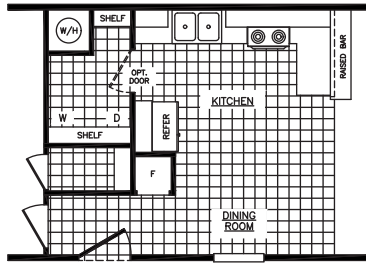
**Model 6763X**  
**3 Bedroom • 2 Bath • Floor Size 1,178 sq. ft.**



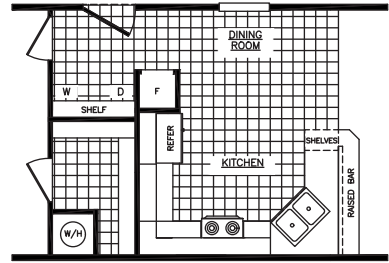
OPT. GLAM BATH



ALT. BATH WITH CLOSET



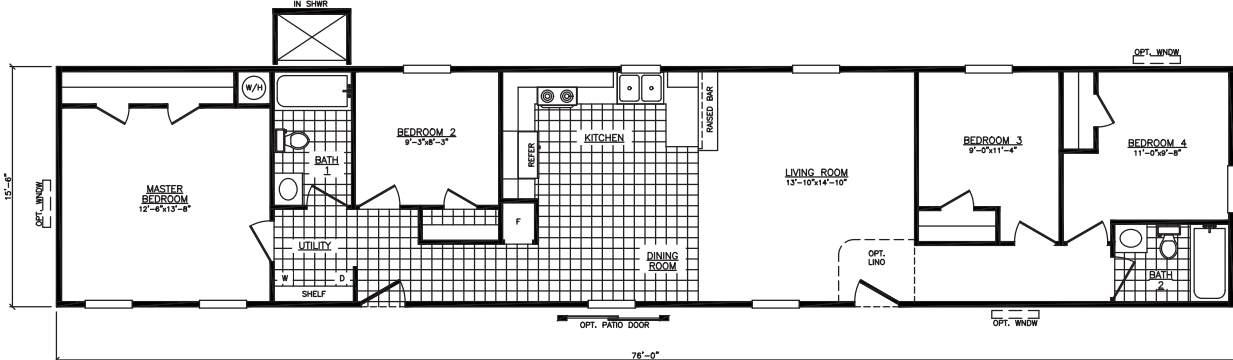
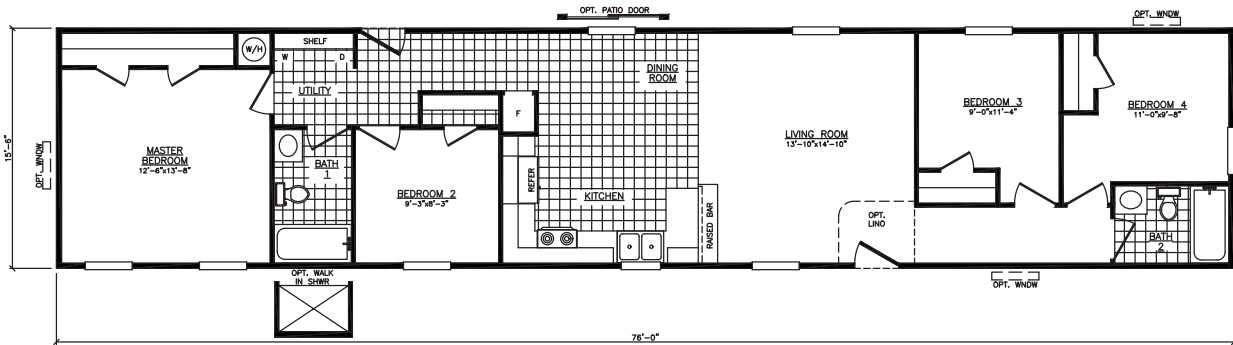
OPT. REVERSE AISLE



OPT. ALT. KITCHEN

# The Roosevelt

**Model 6764X**  
**4 Bedroom • 2 Bath • Floor Size 1,178 sq. ft.**



OPT. REVERSE AISLE

# Mojave Series

## Standard Features

### Exterior

Thermal Zone III Construction  
Nominal 3/12 Roof Pitch  
R-28-11-11 Insulation  
(Additional Windows & Doors May Require Higher Insulation Values)  
Vinyl Siding  
1/4" Backer Board Wrap under Vinyl Siding  
3-Tab Fiberglass Shingles  
7/16" OSB Roof Sheathing  
Dead Bolt Locks at Front and Rear (Keyed Alike)  
Vinyl Single Hung Windows w/ Grids  
Foam All Exterior Windows  
38"x82" R.O. 6 Panel Residential Front Door (No Storm)  
34"x82" R.O. 6 Panel Residential Rear Door (No Storm)  
2x6 Floor Joists 16" O.C. (14' & 28' Wides)  
2x8 Floor Joists 16" O.C. (16' & 32' Wides)  
20 LB Roof Load  
2x4 Exterior Walls 16" O.C.  
Raised Panel Shutters at FDS & Hitch (Single)  
Raised Panel Shutters at FDS Only (Sectional)  
Light Fixtures at All Exterior Doors  
Full Length Chassis w/ Outriggers  
99.5" I-Beam Spread, Detachable Hitch

### Interior

Customer Choice Decor Selections  
2" Plastic Mini-Blinds Throughout  
Door Stop All 3 Sides  
94" Flat Ceilings  
Blown Textured Ceiling  
OSB Tounge & Groove Floor Decking  
Vinyl Wall Panels Throughout  
Flat Wrapped Moldings Throughout  
16oz. Plush Carpet  
3/8" Rebond Carpet Pad  
Vinyl Flooring  
Wire Closet Shelving  
2 Panel White Interior Doors Throughout  
3 Hinge Interior Doors

Because of continuous product improvements, specifications are subject to change without notice or obligation

### Electrical, Plumbing, & Heating

Smoke Detectors in Main Living Areas & All Bedrooms  
200 AMP Service, Electric Furnace  
40 Gallon Electric Water Heater  
Exterior Electrical Receptacle (FDS)  
Copper Wiring, PEX Plumbing  
Whole House Shut-off Valve near Water Heater  
Water Shut-off Valves (All Sinks & Commodes)  
Metal Heat Ducts  
GFI Receptacles in Kitchen and Baths  
Bedroom Ceiling Lights Throughout  
Plumb & Wire for Washer & Dryer  
Utility Shelf above Washer & Dryer

### Kitchen

Electric Coil Top Range  
18cf Refrigerator  
30" Power Range Hood  
30" Overhead Cabinets w/ Fixed Center Shelves  
Raised Panel MDF Wrapped Cabinet Doors & Stiles  
Concealed Cabinet Door Hinges  
(1) Bank of Drawers w/ Residential Rails & Guides  
Laminated Countertops  
Stainless Steel Kitchen Sink  
Shelf over Range & Refrigerator

### Bath

Tub Shower w/ Surround w/ Anti-Scald Single Lever Faucet in Bathroom(s)  
Garden Tub w/ Surround (Bath #1 - Sectional)  
Laminated Countertops  
Mirror above Each Bathroom Sink  
Power Exhaust Fans in Bathroom(s)  
China "Water Saver" Commode in Bathroom(s)  
White Plastic Sink(s) w/ Dual Knob Faucet(s)

## ADVENTURE HOMES

[www.AdventureHomes.net](http://www.AdventureHomes.net)

1119 Fuller Drive, Garrett, IN 46738

877-510-1955



August '22