

2023



*Mojave Series*

*Homes*

**Sectional**



**DREAM IT. DESIGN IT. BUILD IT. LOVE IT.**

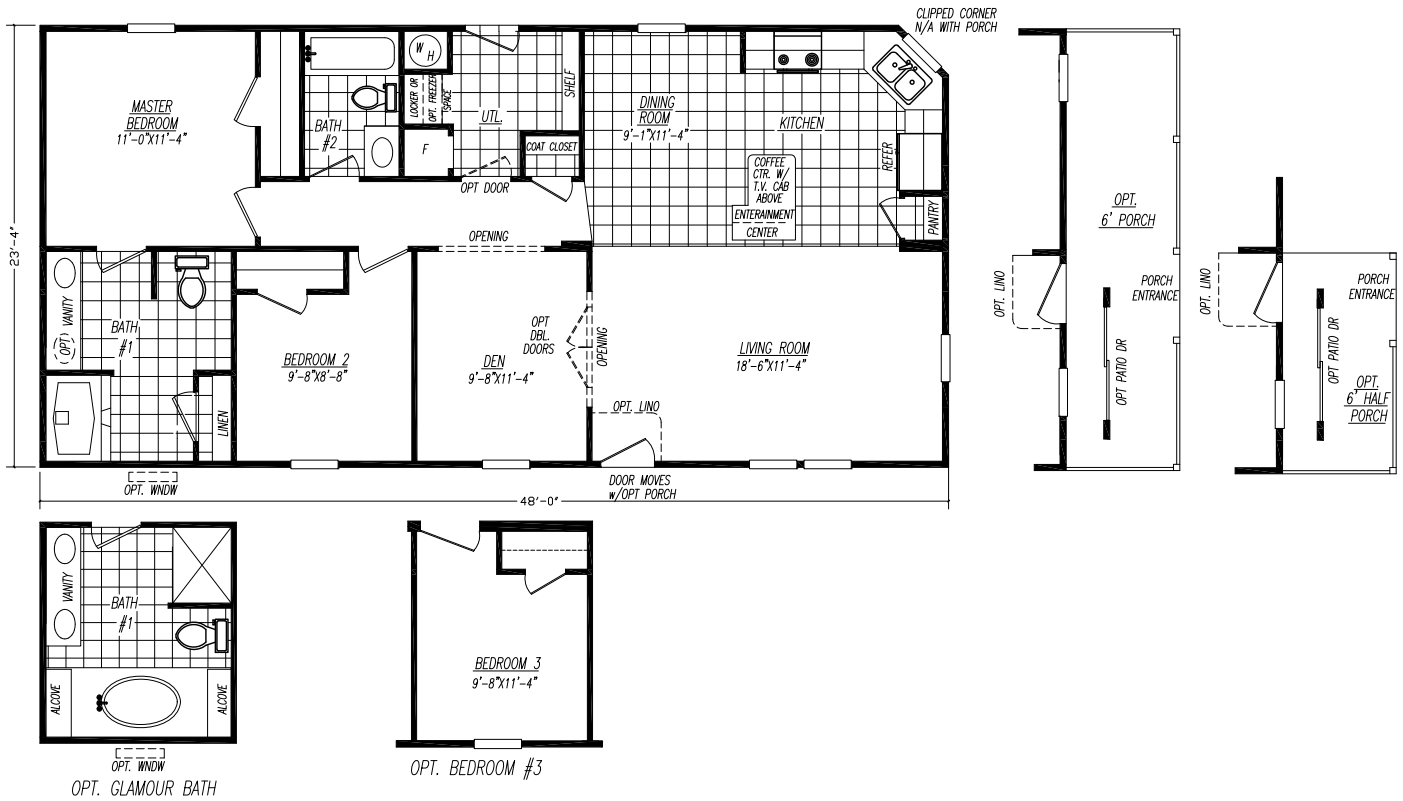
*Your Adventure begins here.*





# The White Water

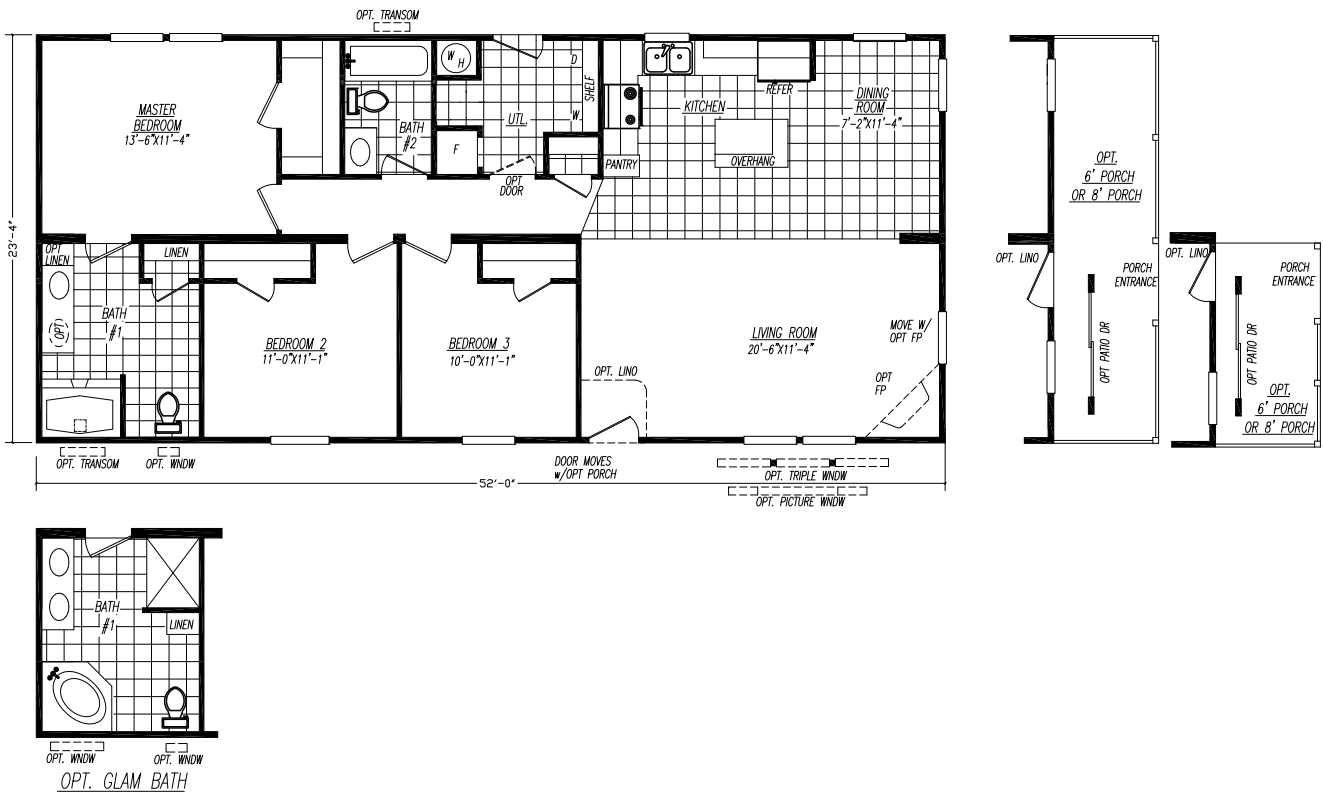
**Model 3482S**  
**2 Bedroom • 2 Bath • Floor Size 1,120 sq. ft.**



# The Crusade

**Model 3523F**  
**3 Bedroom • 2 Bath • Floor Size 1,213 sq. ft.**

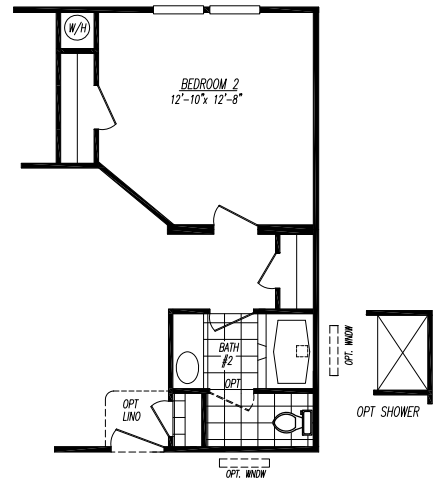
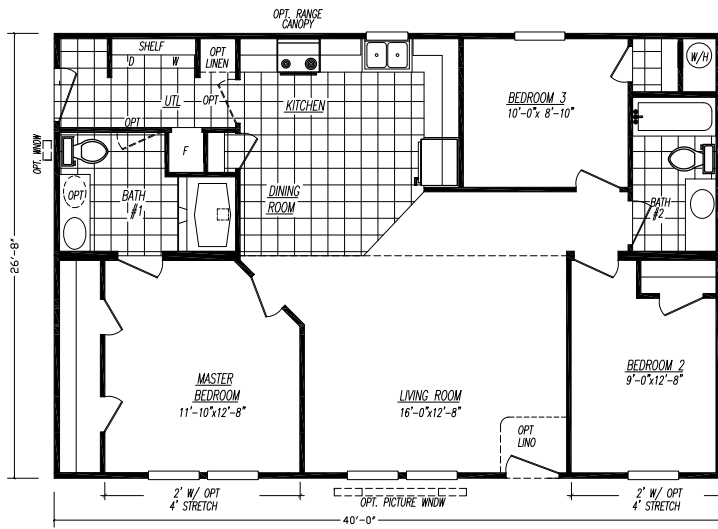
**3**



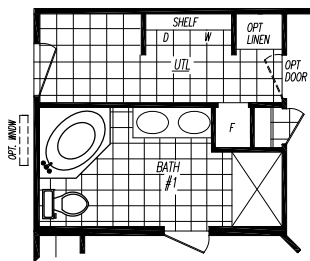


# The Portage

**Model 4403C**  
**3 Bedroom • 2 Bath • Floor Size 1,067 sq. ft.**



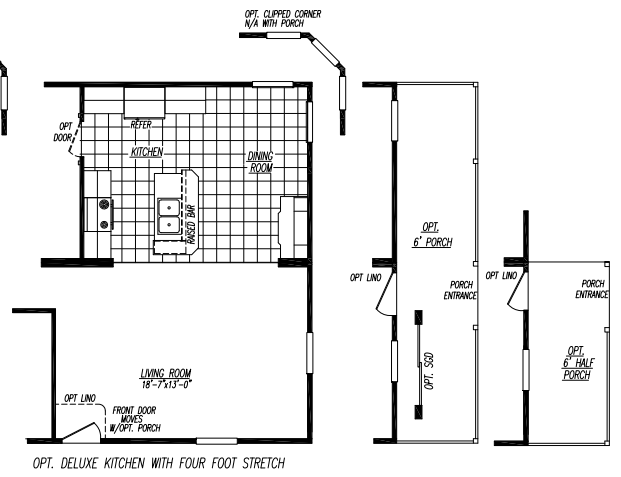
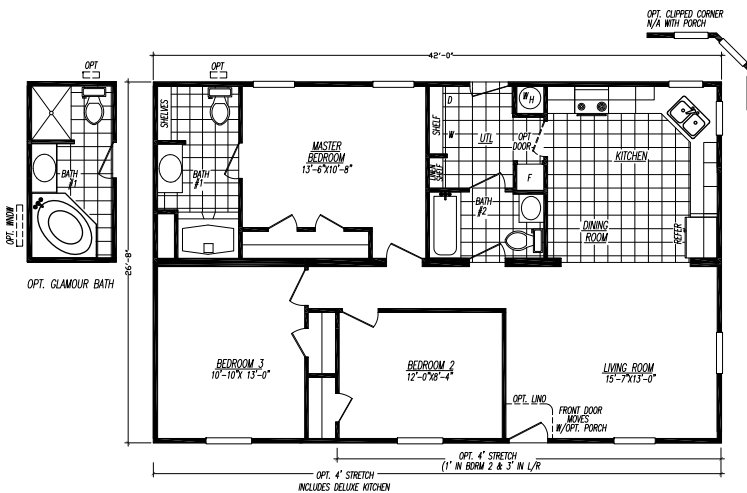
OPT. 2 BEDROOM



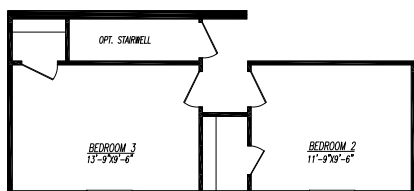
OPT. GLAM BATH  
 ONLY AVAILABLE WITH 4' STRETCH  
 IN MASTER BATH & M-BDRM

# The Pioneer

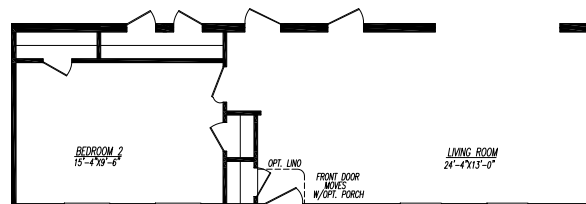
**Model 4423S**  
**3 Bedroom • 2 Bath • Floor Size 1,120 sq. ft.**



OPT. DELUXE KITCHEN WITH FOUR FOOT STRETCH



OPT. BASEMENT ENTRY (REQUIRES FOUR FOOT STRETCH & INCLUDES DELUXE KITCHEN)



OPT. 2 BEDROOM





























# The Forestville

**Model 4623D**  
**3 Bedroom • 2 Bath • Floor Size 1,653 sq. ft.**



# The Acadia

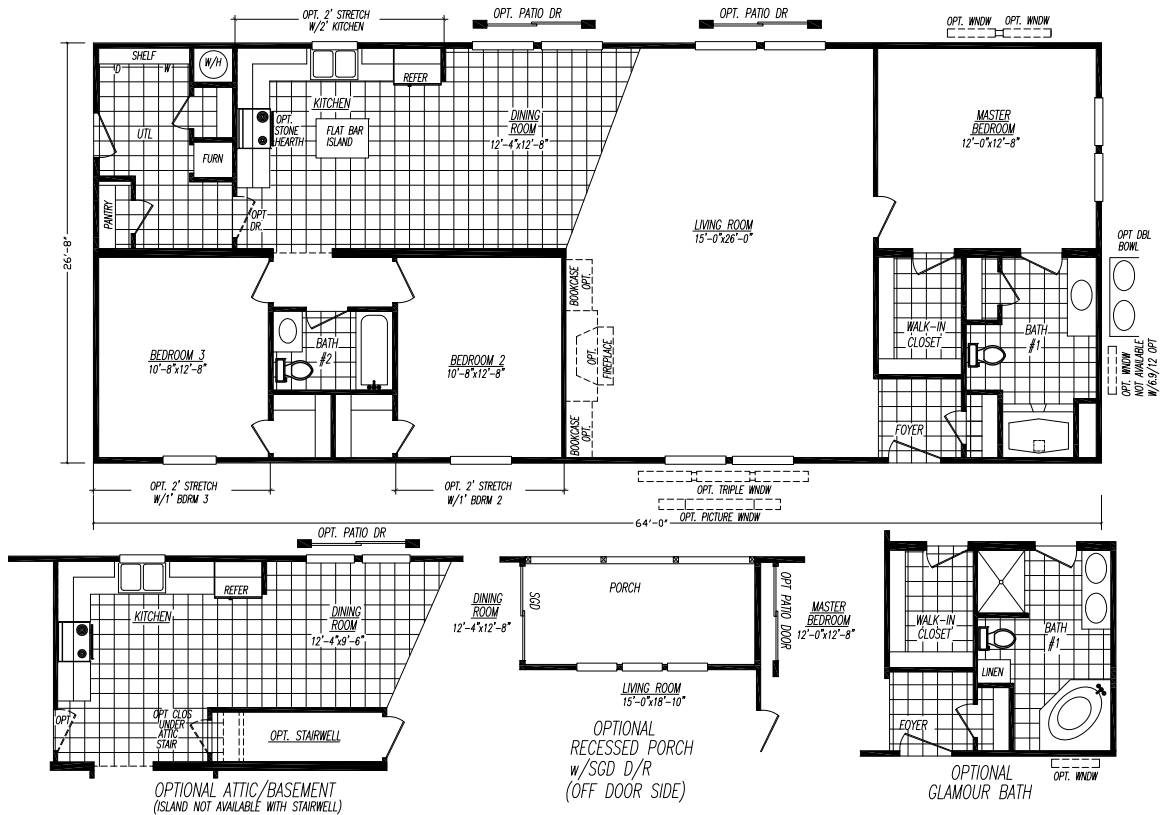
**Model 4643A**  
**3 Bedroom • 2 Bath • Floor Size 1,707 sq. ft.**





# The Waldon

**Model 4643P**  
**3 Bedroom • 2 Bath • Floor Size 1,707 sq. ft.**



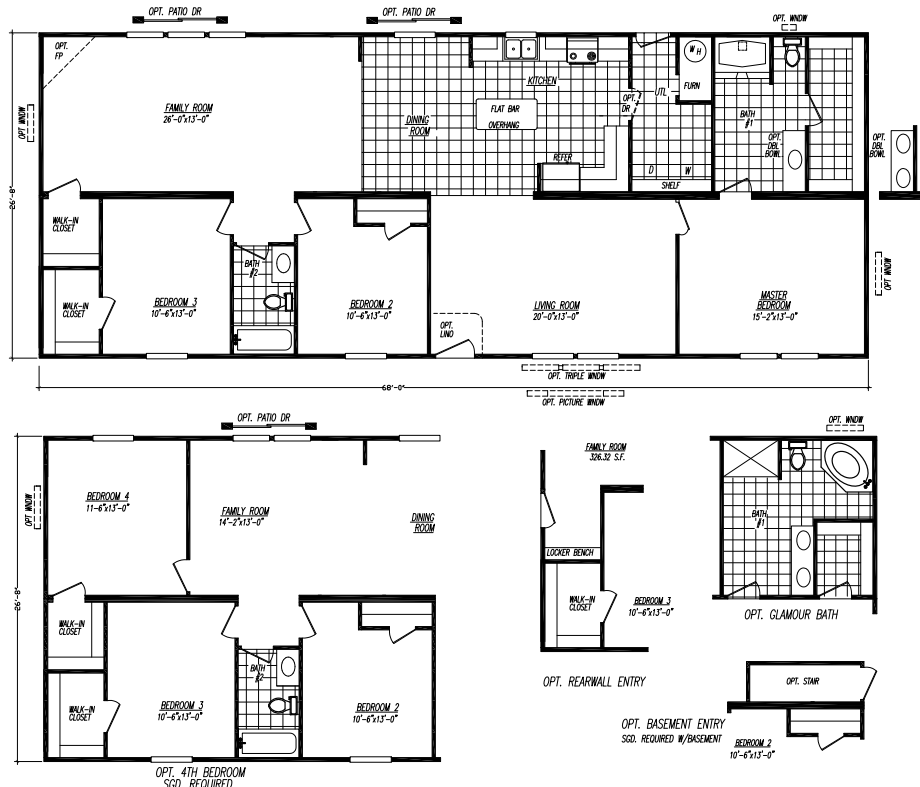
# The Boone

**Model 4683B**  
**3 Bedroom • 2 Bath • Floor Size 1,813 sq. ft.**



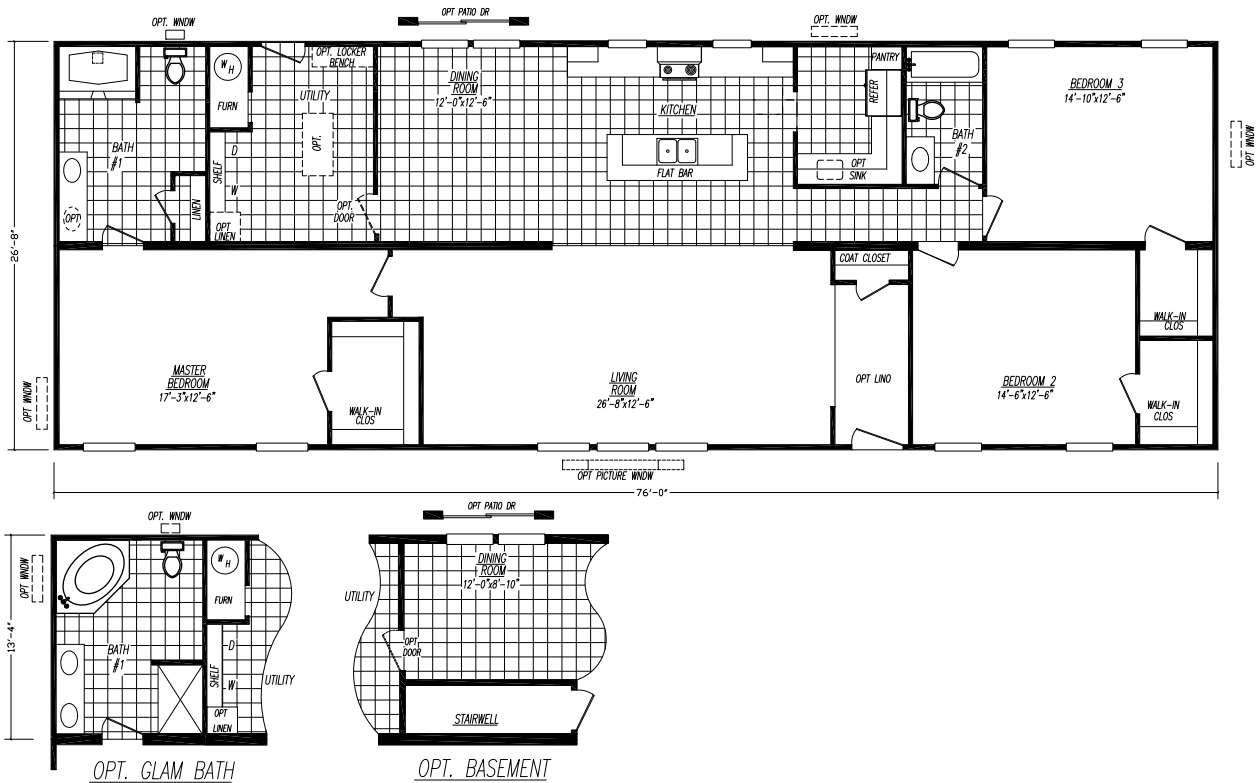
# The Endeavor

**Model 4683M**  
**3 Bedroom • 2 Bath • Floor Size 1,813 sq. ft.**



# The Journey

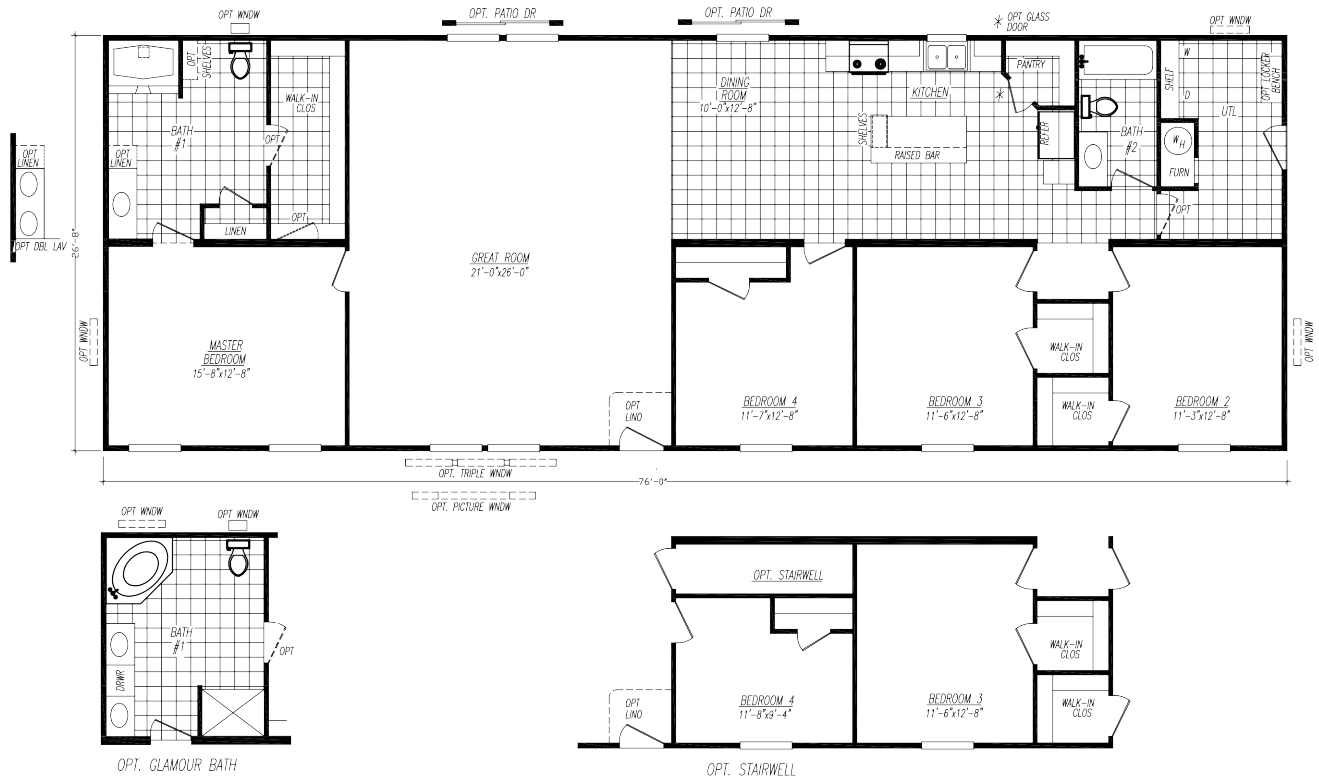
**Model 4763N**  
**3 Bedroom • 2 Bath • Floor Size 2,027 sq. ft.**





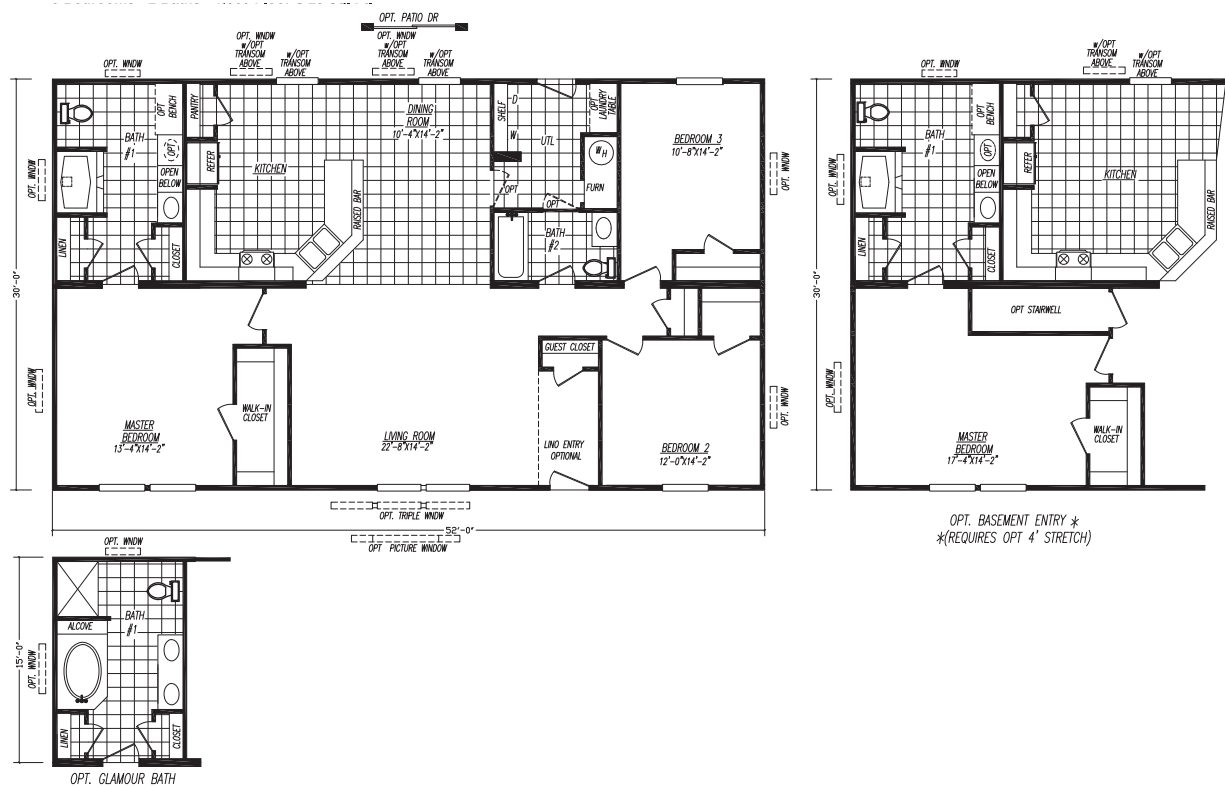
# The Pines

**Model 4764K**  
**4 Bedroom • 2 Bath • Floor Size 2,027 sq. ft.**



# The Enterprise

**Model 0523H**  
**3 Bedroom • 2 Bath • Floor Size 1,560 sq. ft.**



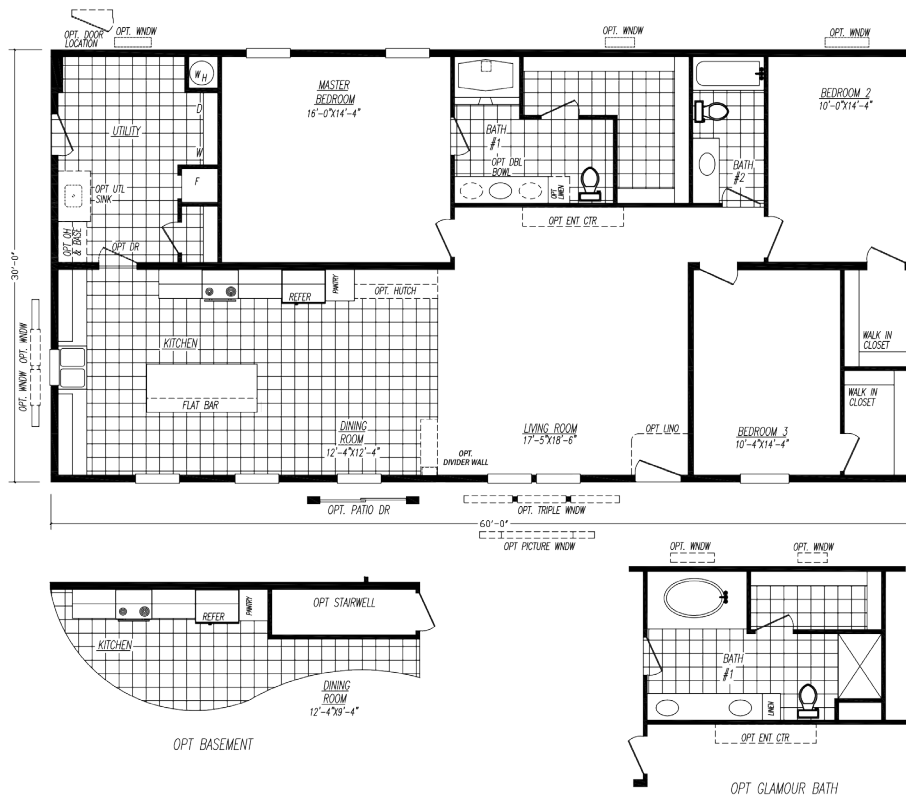
# The Aztec

**Model 0563S**  
**3 Bedroom • 2 Bath • Floor Size 1,680 sq. ft.**



# The Titan

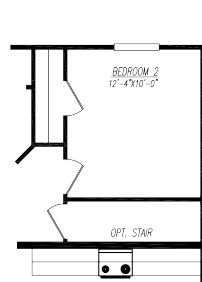
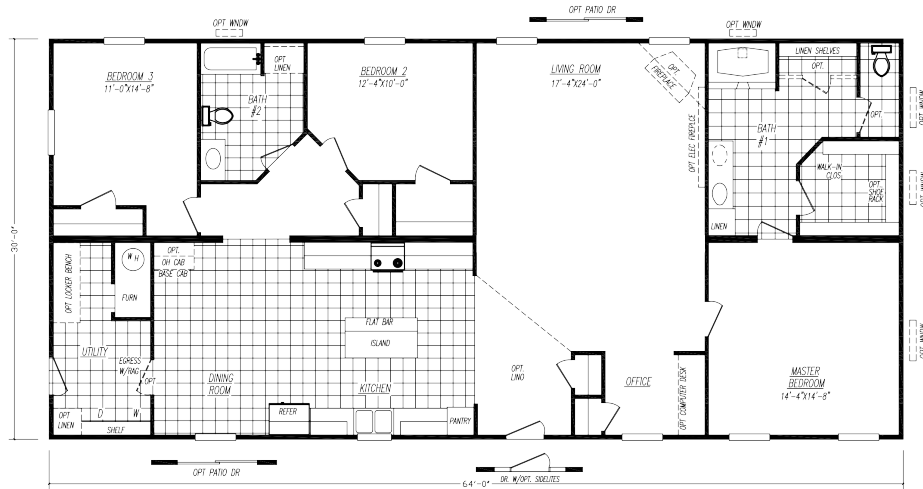
**Model 0603K**  
**3 Bedroom • 2 Bath • Floor Size 1,800 sq. ft.**



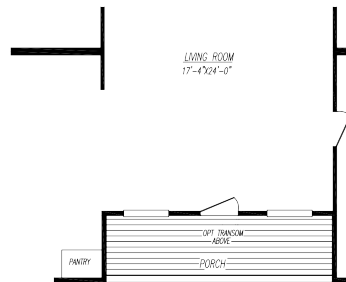


# The Cambridge

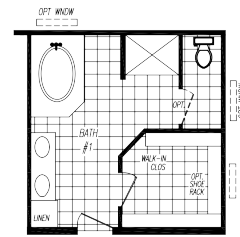
**Model 0643FF**  
**3 Bedroom • 2 Bath • Floor Size 1,920 sq. ft.**



OPT. BASEMENT ENTRY



OPT. RECESSED PORCH

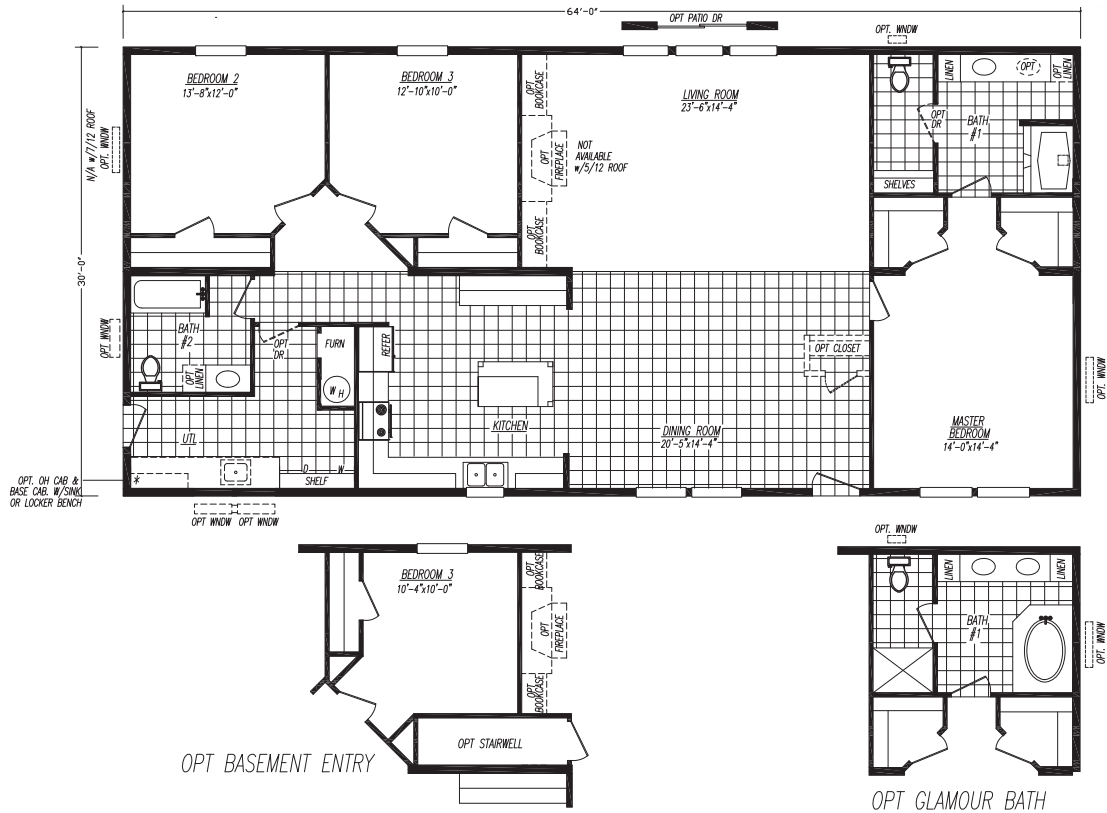


OPT. GLAMOUR BATH



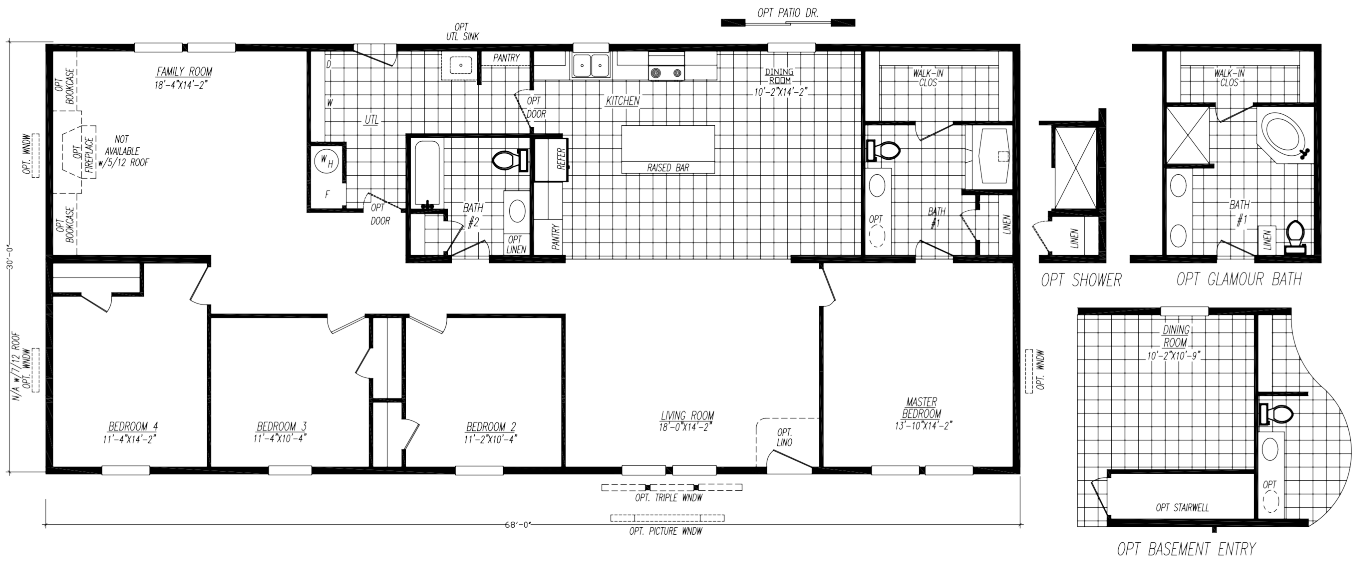
# The Red Rock

**Model 0643T**  
**3 Bedroom • 2 Bath • Floor Size 1,920 sq. ft.**



# The Graylock

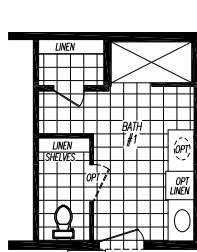
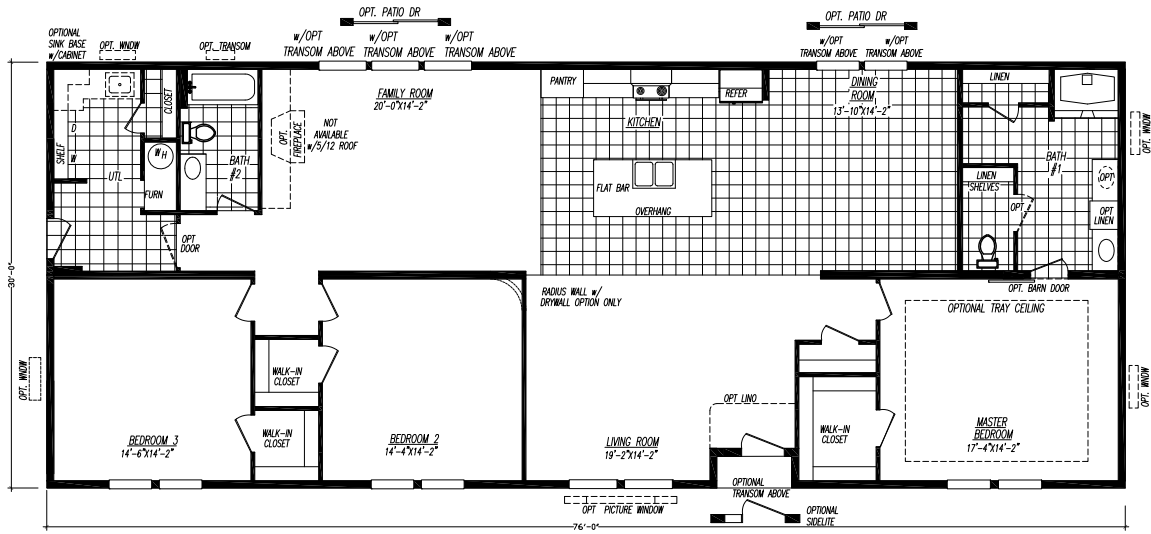
**Model 0684F**  
**4 Bedroom • 2 Bath • Floor Size 2,040 sq. ft.**



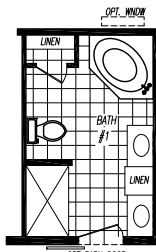


# The Mohican

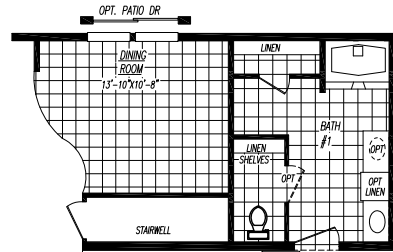
**Model 0763C**  
**3 Bedroom • 2 Bath • Floor Size 2,280 sq. ft.**



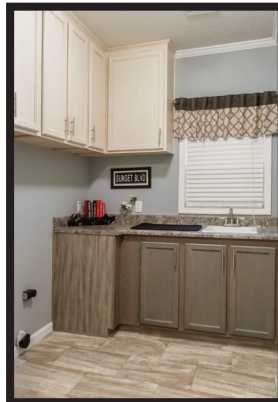
OPT. BARN DOOR  
 OPT. 72" TILED SHOWER



OPT. BARN DOOR  
 OPT. GLAMOUR BATH

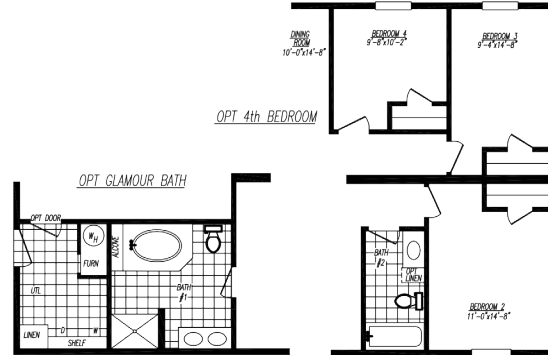
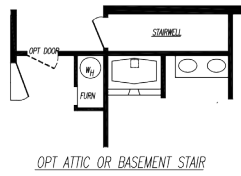
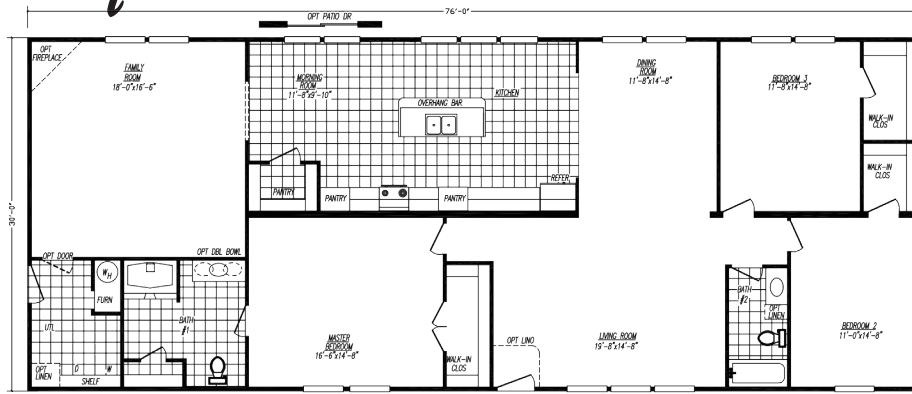


OPT. BARN DOOR  
 OPT. BASEMENT ENTRY



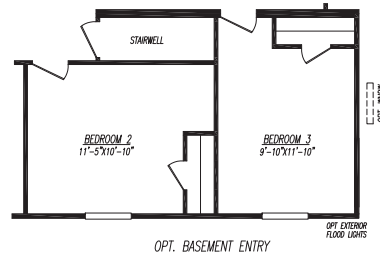
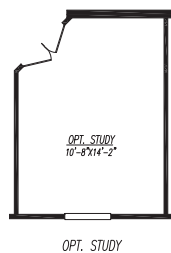
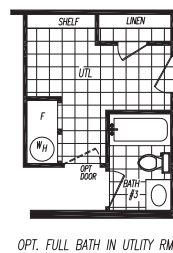
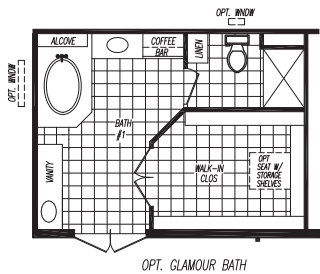
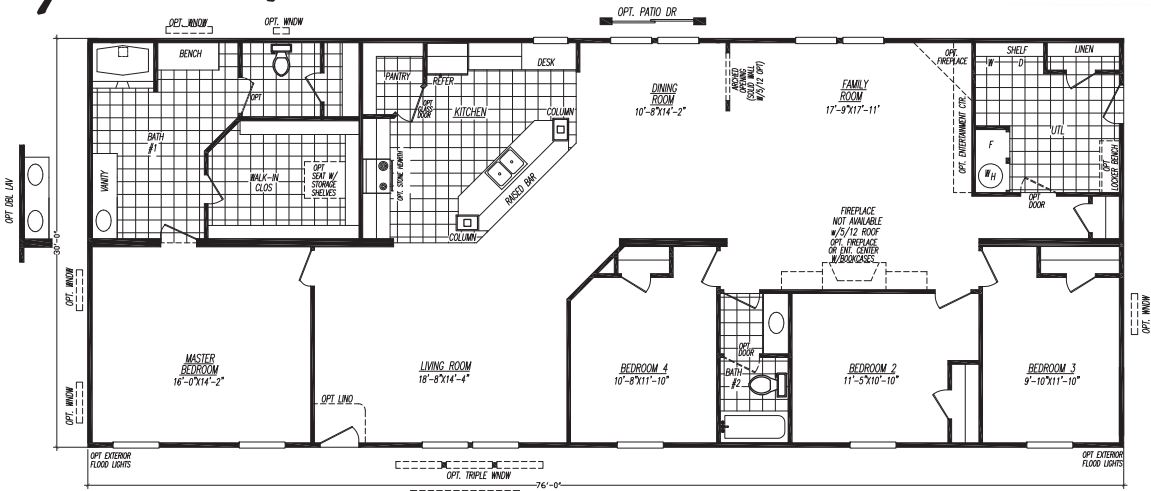
# The Green Valley

**Model 0763E**  
**3 Bedroom • 2 Bath • Floor Size 2,280 sq. ft.**



# The Stone Mountain

**Model 0764L**  
**4 Bedroom • 2 Bath • Floor Size 2,280 sq. ft.**











# Mojave Series

## Standard Features

### Exterior

Thermal Zone III Construction  
Nominal 3/12 Roof Pitch  
R-28-11-11 Insulation  
(Additional Windows & Doors May Require Higher Insulation Values)  
Vinyl Siding  
1/4" Backer Board Wrap under Vinyl Siding  
3-Tab Fiberglass Shingles  
7/16" OSB Roof Sheathing  
Dead Bolt Locks at Front and Rear (Keyed Alike)  
Vinyl Single Hung Windows w/ Grids  
Foam All Exterior Windows  
38"x82" R.O. 6 Panel Residential Front Door (No Storm)  
34"x82" R.O. 6 Panel Residential Rear Door (No Storm)  
2x6 Floor Joists 16" O.C. (14' & 28' Wides)  
2x8 Floor Joists 16" O.C. (16' & 32' Wides)  
20 LB Roof Load  
2x4 Exterior Walls 16" O.C.  
Raised Panel Shutters at FDS & Hitch (Single)  
Raised Panel Shutters at FDS Only (Sectional)  
Light Fixtures at All Exterior Doors  
Full Length Chassis w/ Outriggers  
99.5" I-Beam Spread, Detachable Hitch

### Interior

Customer Choice Decor Selections  
2" Plastic Mini-Blinds Throughout  
Door Stop All 3 Sides  
94" Flat Ceilings  
Blown Textured Ceiling  
OSB Tounge & Groove Floor Decking  
Vinyl Wall Panels Throughout  
Flat Wrapped Moldings Throughout  
16oz. Plush Carpet  
3/8" Rebond Carpet Pad  
Vinyl Flooring  
Wire Closet Shelving  
2 Panel White Interior Doors Throughout  
3 Hinge Interior Doors

### Electrical, Plumbing, & Heating

Smoke Detectors in Main Living Areas &  
All Bedrooms  
200 AMP Service, Electric Furnace  
40 Gallon Electric Water Heater  
Exterior Electrical Receptacle (FDS)  
Copper Wiring, PEX Plumbing  
Whole House Shut-off Valve near Water Heater  
Water Shut-off Valves (All Sinks & Commodes)  
Metal Heat Ducts  
GFI Receptacles in Kitchen and Baths  
Bedroom Ceiling Lights Throughout  
Plumb & Wire for Washer & Dryer  
Utility Shelf above Washer & Dryer

### Kitchen

Electric Coil Top Range  
18cf Refrigerator  
30" Power Range Hood  
30" Overhead Cabinets w/ Fixed Center Shelves  
Raised Panel MDF Wrapped Cabinet Doors & Stiles  
Concealed Cabinet Door Hinges  
(1) Bank of Drawers w/ Residential Rails & Guides  
Laminated Countertops  
Stainless Steel Kitchen Sink  
Shelf over Range & Refrigerator

### Bath

Tub Shower w/ Surround w/ Anti-Scald Single  
Lever Faucet in Bathroom(s)  
Garden Tub w/ Surround (Bath #1 - Sectional)  
Laminated Countertops  
Mirror above Each Bathroom Sink  
Power Exhaust Fans in Bathroom(s)  
China "Water Saver" Commode in Bathroom(s)  
White Plastic Sink(s) w/ Dual Knob Faucet(s)

Because of continuous product improvements, specifications  
are subject to change without notice or obligation

## ADVENTURE HOMES

[www.AdventureHomes.net](http://www.AdventureHomes.net)

1119 Fuller Drive, Garrett, IN 46738

877-510-1955



August '22