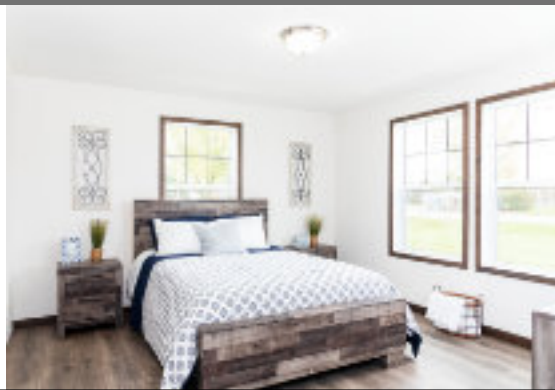
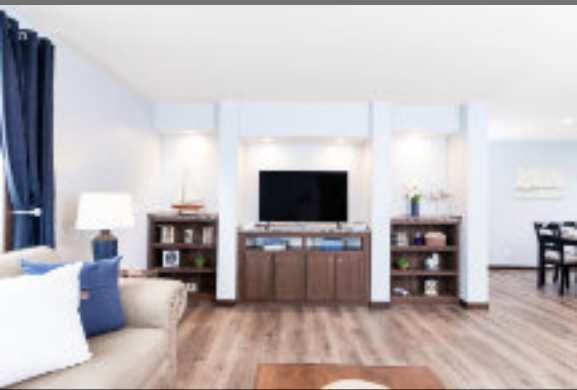


**2022**



## ***Option Picture Guide***



**Clayton**  
middlebury



Exterior Packages

The Prairie Exterior Package  
Available in 3/12 or 5/12 Roof Pitch



Shown with  
Mist Siding Pkg  
& 3/12 Roof  
Pitch

Shown with  
White Siding Pkg  
& 5/12 Roof  
Pitch



Shown with  
Sagebrook Siding Pkg  
& 5/12 Roof Pitch

Single Section Hitch End Exterior Packages

Exterior A



Exterior B



Exterior C



Exterior E





Exterior Options



**Deluxe End Elevation**  
Eyebrow, Column, Shutters - 3/12 Only



**Deluxe End Elevation**  
Eyebrow, Column, Shake & Window Surround - 3/12 Only



**Corner Window Hitch End**  
Exterior Package - 3/12 Only



**Shake Siding on**  
Dormer above  
Continuous Eave



**Farmhouse**  
Shutters -  
Smokestone



**Vinyl Window**  
Surround



**Smart Board Window**  
Surround - Bronze



**Raised Siding**  
Skirting Application



**Black Fascia & Drip**  
Edge & Bronze Soffit  
Package

Optional Dormers

Optional Dormers with  
3/12 Roof Pitch



**10' Open**



**20' Open**



**20' Double Dormer w/6'**  
Eyebrow & Continuous Eave



**20' Open Dormer w/Columns,**  
Vertical Board & Batten Siding &  
Window Surrounds

Optional Dormers with  
5/12 Roof Pitch



**10' Open**



**20' Hinged w/ Continuous**  
Eave



**20' Hinged w/ 6' Eyebrow &**  
Continuous Eave



**20' Hinged w/ 9' Eyebrow &**  
Continuous Eave  
(Only available on MS038)



Structural Options

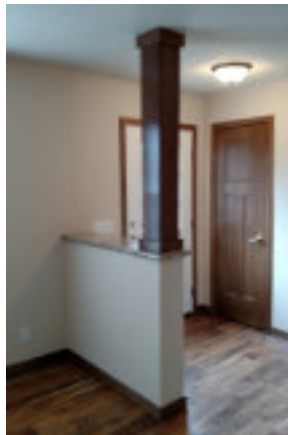
Half Porch  
Shown with 1/2 Porch End Elevation -  
3/12 Only



8' Covered Porch  
Shown with Black Railing

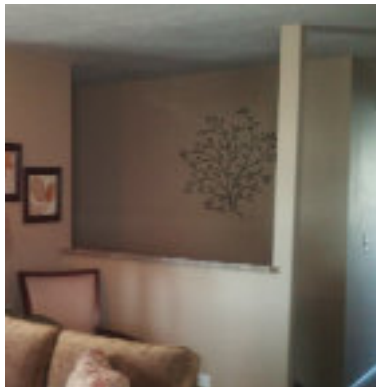


Formal Foyer w/  
half wall with  
Hardwood Cap



\*No longer  
includes column

Open Basement  
Stairwell with half wall  
& Hardwood Cap



\*No longer  
includes End Wall

White Metal Porch Railing



Black Metal Porch Railing



Ceiling Mate  
Line Beam



Recessed Entry  
Select Models only



Exterior Doors



36" Deco Half Light



36" Craftsman 6 Lite



36" Full Glass w/  
Integrated Blinds



36" 9-Lite



Patio Door  
Shown with Opt Prima Natural  
Drapes



Atrium Door w/  
Integrated Blinds



## Window Options



40" x 8" Transom



58" x 12" Transom  
VBP



Bronze Window  
Option  
6 over clear

58" x 42"  
Kitchen  
Picture  
Window  
(ipo 2  
windows)



Cordless Mini  
Blinds  
1" or 2"

## Interior Doors & Trim Options



STD 2 Panel White  
Arched Interior Door



5 panel White  
Smooth Interior Door



Homestead Oak 3 Panel  
Interior Doors T/O  
w/Stained Pine Shaker Trim  
(Casing & Base)



Lever Locksets T/O  
Brushed Nickel



Lever Locksets T/O  
Black



36" Interior Partition Door  
3 Pnl Homestead Oak / 5 Panel White / Black

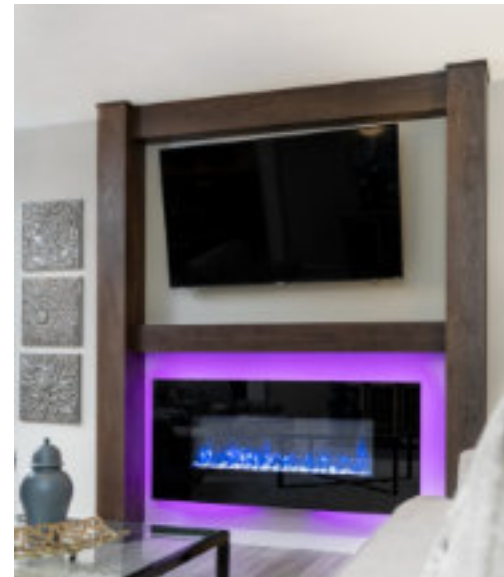




## Heating & Cooling Options



Fiberglass Heat Ducts w/  
In Floor Cross over Heat  
Ducts



58" Electric Fireplace w/ Media Wall  
(Includes Prep for Flat Screen)



Half Quartz Stone  
Fireplace

STD  
Ecobee 3  
Thermostat



Half Quartz Stone FP  
- Cornered

## Appliance Options



### Contemporary Gourmet Kitchen

- 30" Cooktop w/ Pot & Pan Drawer
- 27" Built-In Oven
- 26 CF Side by Side Refer
- 1.6 Built-In Microwave
- Dishwasher
- Contemporary Stainless Steel Range Hood
- Full Height Ceramic Backsplash behind range to bottom of range hood
- Adjustable Refer O/H Shelf - most models

\*Availability varies by Model



## Appliance Options



### Black Stainless Steel Gallery Appliance Package

Includes Frigidaire Smudge-Proof Black Stainless Steel appliances  
Shown with Optional White Linen Cabinets  
w/ 42" Overhead Cabinets, Optional Black Kitchen Cabinet Hardware,  
Farmhouse Black Kitchen Sink w/ Black Gooseneck Faucet, and Full  
Height Mosaic Backsplash

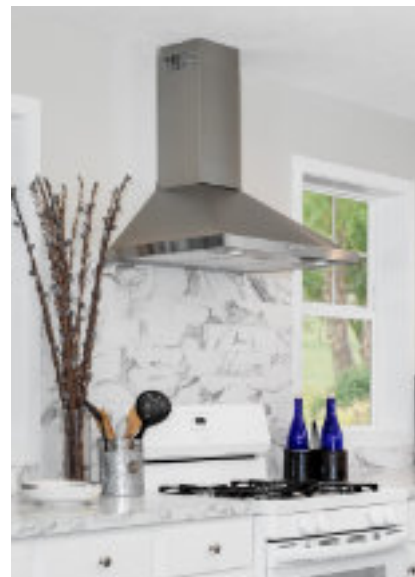
Top Load Washer



Electric or Gas Dryer



Euro  
Stainless  
Steel Range  
Hood with  
Full Height  
Calcutta  
Backsplash



## Appliance Options



Shown with  
STD 30"  
Overhead  
Cabinets

### Quartz Cafe #1

- Quartz Countertop in Kitchen only
- 1 row of Silhoutte Calcutta Ceramic Backsplash
- Island
- Pantry Door to Match Cabinets (where applicable)
- Requires Hardwood Stiles
- 2 sink options: *Price varies based on sink selection*
  - 8" Deep Sink w/ Gooseneck Faucet (shown in pics)
  - 27"x10" SS Sink with Gooseneck Faucet

Shown with  
Optional 42"  
Overhead  
Cabinets





Electrical Options



Ceiling Fan



LED Can Light



Metal Shade Pendant



Schoolhouse Pendant



1 Arm Sconce



STD Exterior Light



STD Vanity Light



Schoolhouse Vanity Lights



Prep for Flat Screen



Video Jack



USB Port & Recept



Phone Jack



Exterior Recept

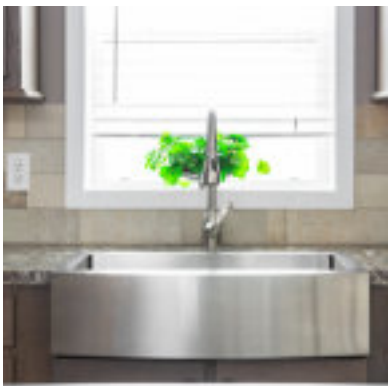
Plumbing Options



8" Deep Sink



27" x 10" Stainless Steel Kitchen Sink with Components & Gooseneck Faucet



Farmhouse Stainless Steel Kitchen Sink w/ Gooseneck Faucet



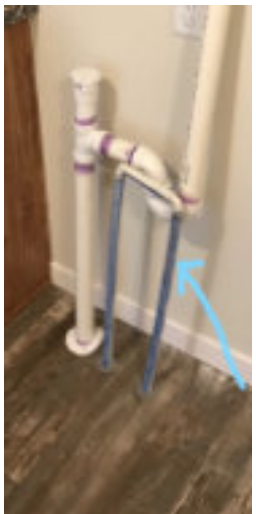
White Drop In Kitchen Sink w/ Black Gooseneck Faucet



STD Kitchen Faucet w/Spray - Chrome



Opt Utility Room Faucet w/Spray - BN



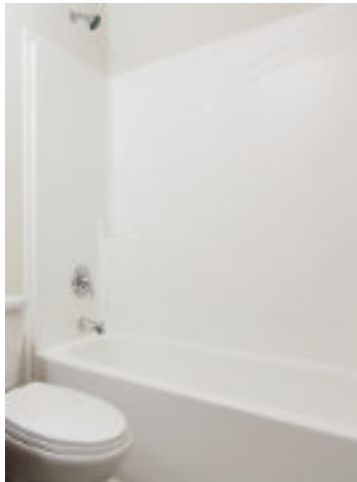
Water Softener Prep w/Drain & Recept



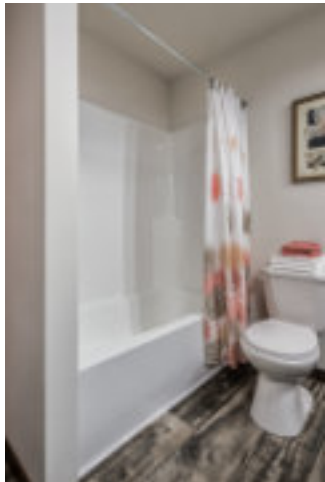
Exterior Faucet



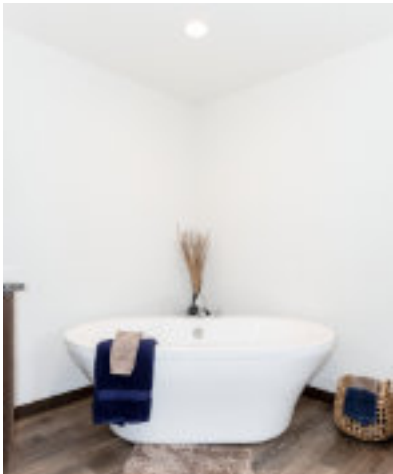
Bathroom Options



T-6030 Tub/  
Shower Combo



1pc Fiberglass 60"  
Garden Tub/Shower



Freestanding Tub



48" 1pc Shower



60" Fiberglass  
Shower



60x43 Bench  
Seat Shower



Elongated  
Commode



Towel Bar



Tissue Holder

Bathroom Options



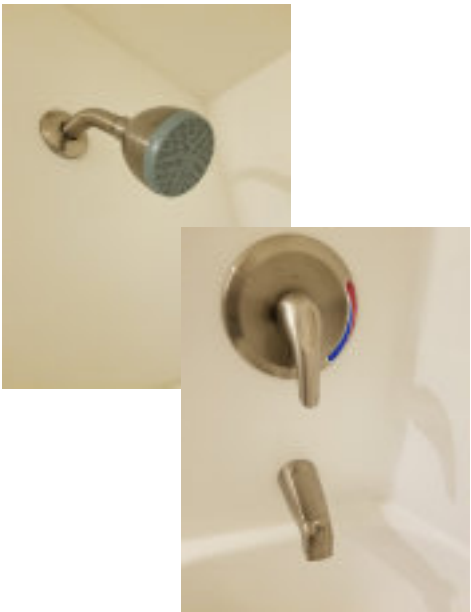
Palisades Shower  
(STD Splash Guard  
Door is shipped loose)



60" Ceramic Shower  
Shown with STD Splash  
Guard Door



STD Pfister Chrome  
Lav Faucet



Pfister Brushed Nickel  
Tub/Shower Hardware



Pfister Matte Black  
Lav Faucet

STD Rain Head with  
17" Arm for  
Ceramic &  
Palisades Showers



Optional Ceramic  
Shower Hardware



Pfister Brushed  
Nickel Lav Faucet



Bathroom Options



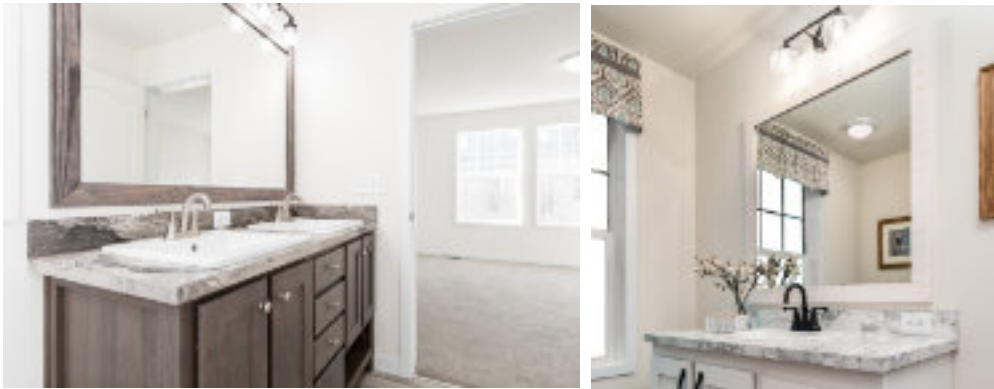
Optional 72" Ceramic Shower Layout



Furniture Style Lav



Bank of Drawers  
Shown in White Linen

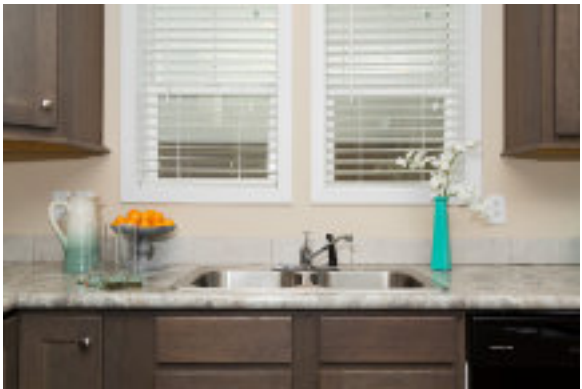


Stile Framed Bath Mirror

Countertop Options



STD 4" Laminate  
Backsplash



4" Single Row Ceramic  
Backsplash  
Shown with Cellar Root



Full Height Ceramic  
Backsplash  
Shown in Arctic White



Butcher Block Laminate  
Island Countertop



Cabinet Options



30" O/H Cabinet  
w/ opt Crown Moulding  
shown in opt White Linen



42" Overhead Flat Panel Cab  
Doors w/ Ceiling Moulding



Kitchen Upgrade  
Cabinet Hardware -  
Black



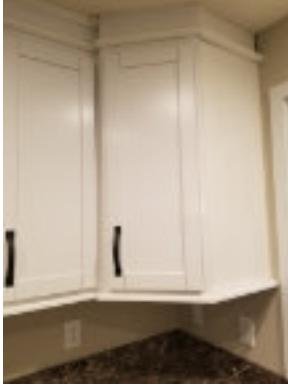
Kitchen Upgrade  
Cabinet Hardware -  
Brushed Nickel



Refer Overhead  
Cabinet



Kitchen Lazy Susan for Corner Base  
Cabinet - Requires Hardwood Stiles



Kitchen Lazy Susan for O/H  
Corner Cabinet - Requires 42"  
O/H Cabinets & Hardwood Stiles



Cabinet Options



Mirrored Coat Tree  
(where available)



Optional Desk  
Style varies by floorplan



Floating Hutch  
Shown w/ Optional  
Bedrock Barnwood  
Feature Wall



Optional Drop Zone  
w/USB Port & Can  
Light



30" 3 Drawer w/  
Shelves Cabinet  
(WIC)



Closet Peninsula Shoe Rack



30" Shoe  
Rack -  
where  
available



Cabinet Options



Sapphire Blue Wainscot in Dining Room where available



Linen Cabinet over Commode



Utility Room Storage Bench



Laundry Tub & Base & O/H Cabinets (varies by floorplan)  
Also showing Laundry O/H Cabinets w/ Crown



Fireplace Media Wall  
\*Actual stone varies in color - see page 10 for current fireplace picture

Cabinet Options



Drywall Media Wall



Optional Island 27.0  
Shown in Sapphire Blue



Optional Island 27.1  
Shown in White Linen & Butcher Block Countertop



# Optional Islands

**26.0**



Size of Islands:

26.0 = 32" x 60"

27 series: 42" x 72"

28 series: 42" x 84"

29 series: 42" x 108"

**27.0**



**27.1**



**28.0**



**28.1**



**29.0**



**29.1**

