

2022



*Nevada Series*

*Homes*

Single & Sectional



*Luxury and Comfort for Less*

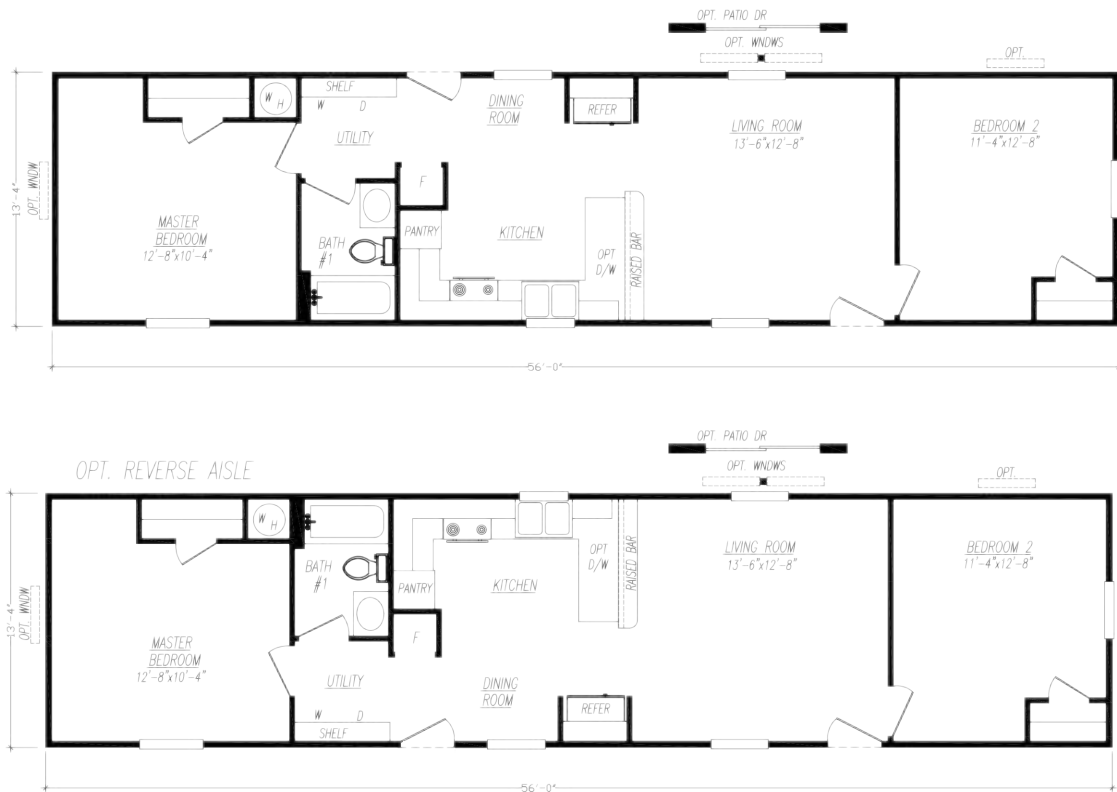
*Your Adventure begins here.*



Welcome to Adventure Homes. We offer you the best value in manufactured housing in today's market. Our homes are built with unbelievable eye appeal & product standards are often above and beyond HUD code. Additionally, we offer award winning sales, service and production teams to enhance your value even more. **We look forward to assisting you and welcoming you into our family of satisfied retailers and customers!**

## Model 2562Z-N

2 Bedroom • 1 Bath • Floor Size 747 sq. ft.

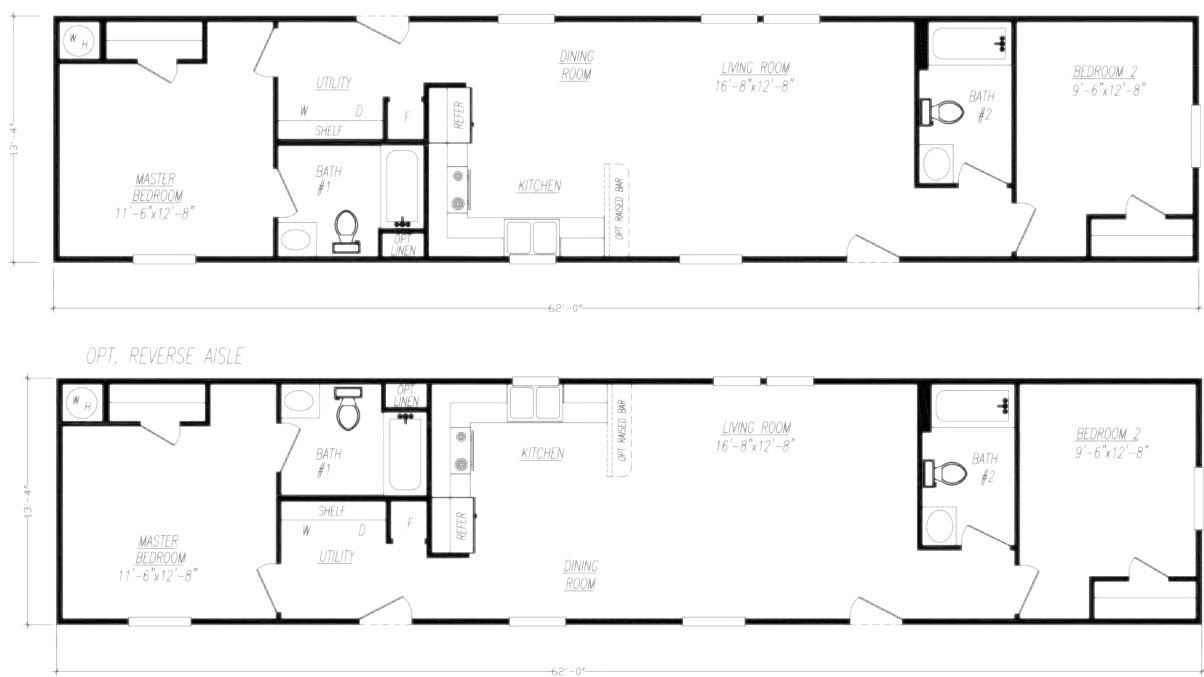


Every home built by Adventure is constructed with premium materials in a climate-controlled enclosed building facility. This helps eliminate weather-damaged building supplies and weather-related delays. These state-of-the-art facilities ensure precise and quality construction. All Adventure homes meet, and in many cases exceed HUD code.

Adventure Homes Nevada Series is standard Factory Select Interior Finishes.

Model 2622X-N

2 Bedroom • 2 Bath • Floor Size 827 sq. ft.



Model 2663F-N

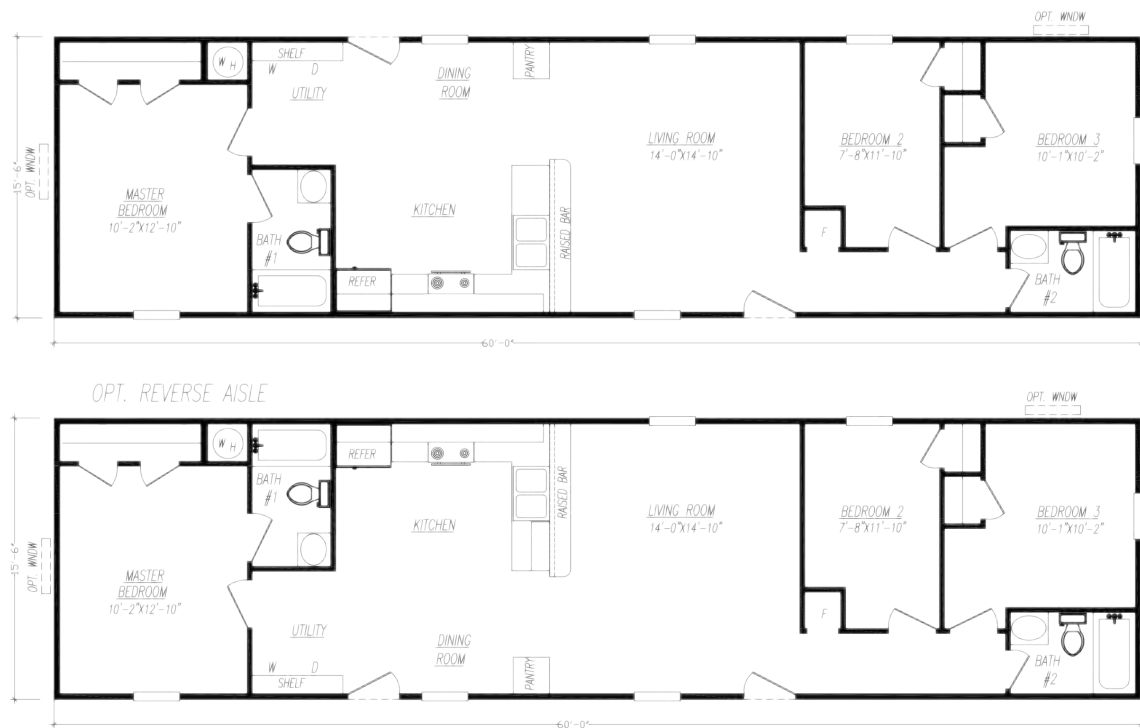
3 Bedroom • 2 Bath • Floor Size 880 sq. ft.

3



## Model 6603U-N

3 Bedroom • 2 Bath • Floor Size 930 sq. ft.



## Model 6663X-N

3 Bedroom • 2 Bath • Floor Size 1,023 sq. ft.



Model 6763B-N

3 Bedroom • 2 Bath • Floor Size 1,178 sq. ft.



Model 4423S-N

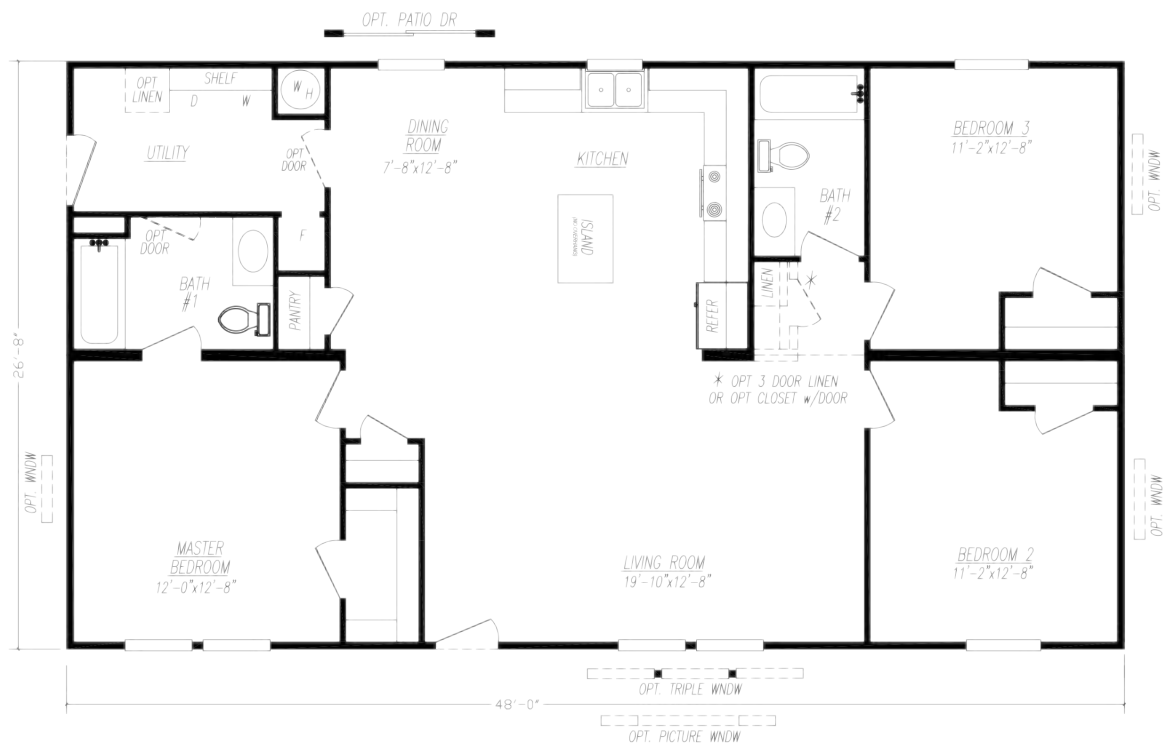
3 Bedroom • 2 Bath • Floor Size 1,120 sq. ft.





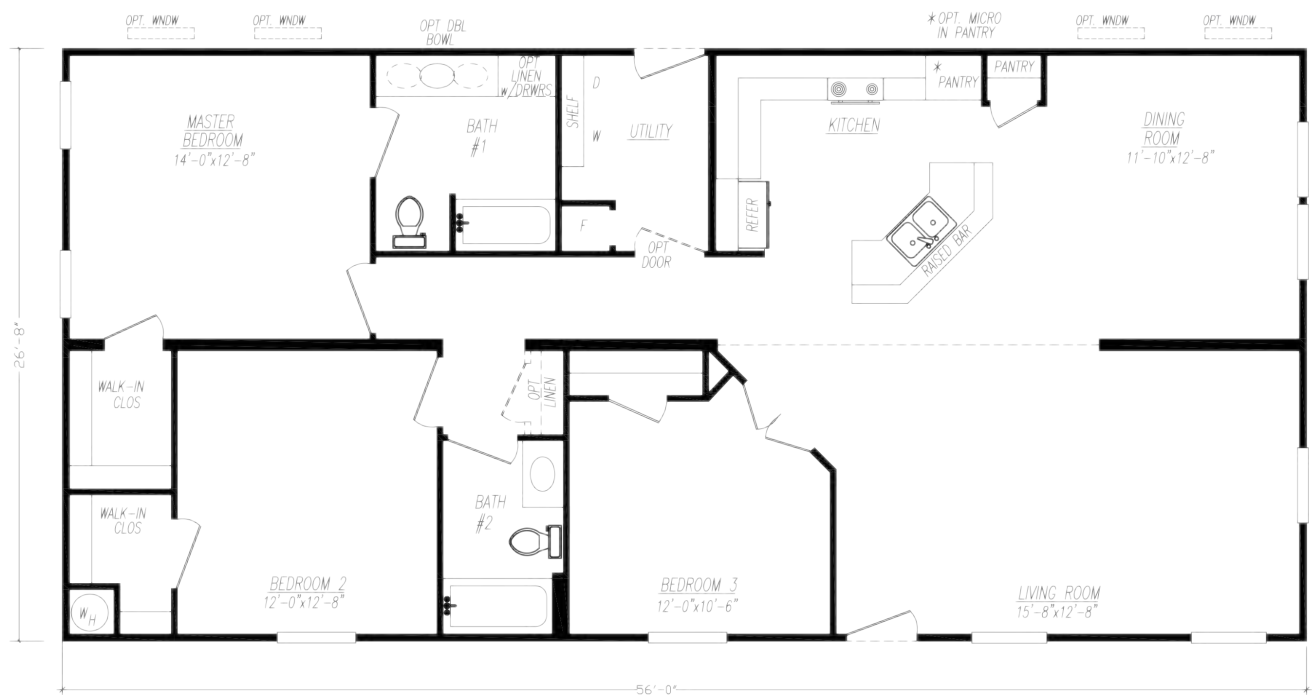
# Model 4483M-N

3 Bedroom • 2 Bath • Floor Size 1,280 sq. ft.



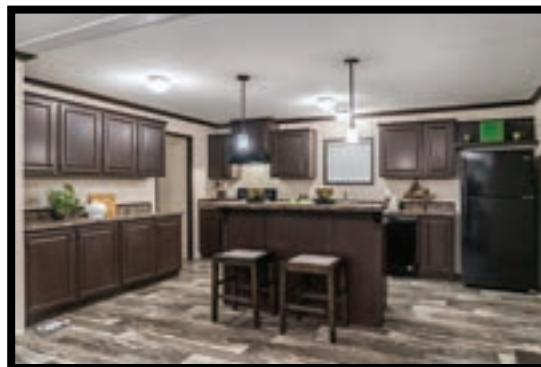
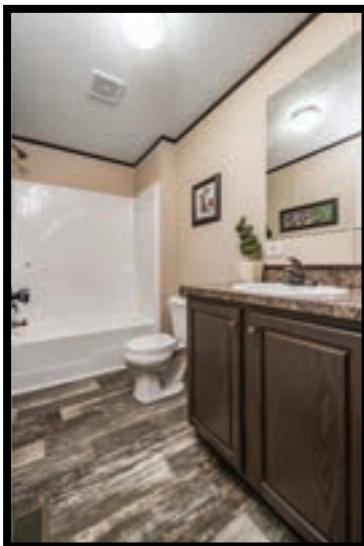
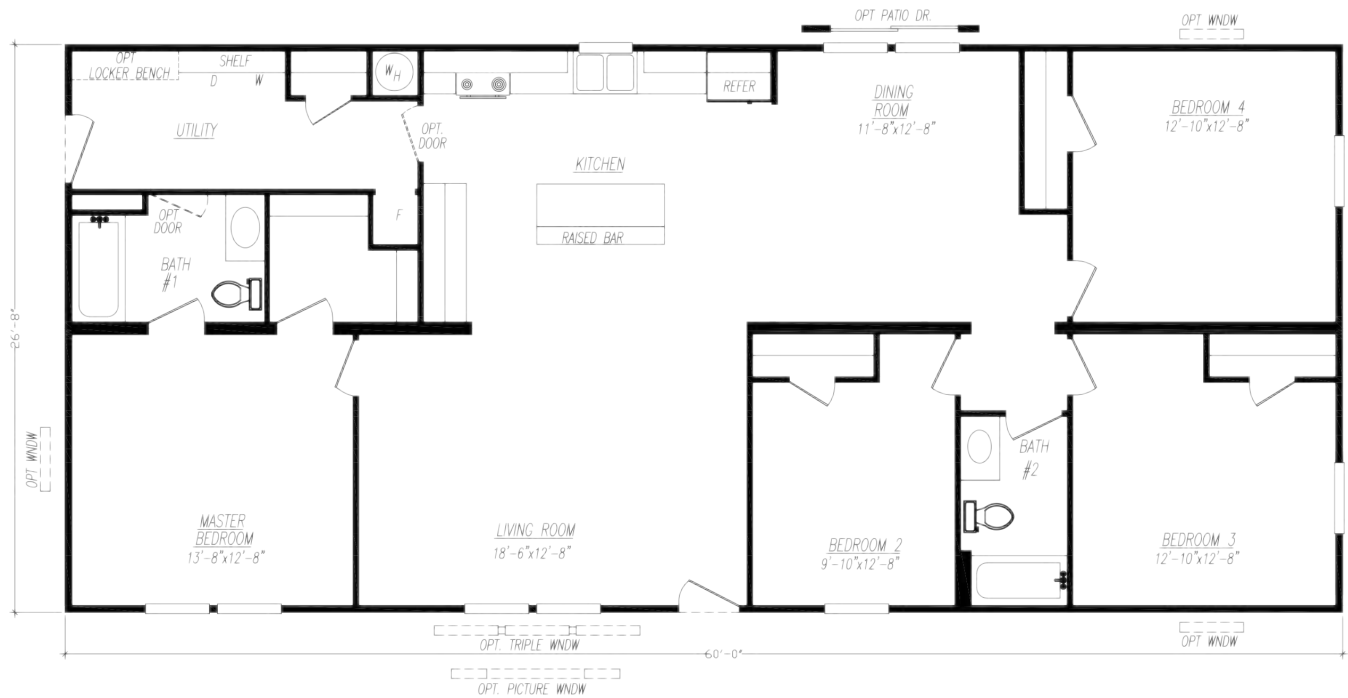
# Model 4563Z-N

3 Bedroom • 2 Bath • Floor Size 1,494 sq. ft.



# Model 4604A-N

4 Bedroom • 2 Bath • Floor Size 1,600 sq. ft.





# Nevada Series

## Standard Features

### Exterior Standards

Thermal Zone III Construction  
Nominal 3/12 Roof Pitch  
R-28-11-11 Insulation  
(Additional Windows & Doors May Require Higher Insulation Values)  
Vinyl Siding  
1/4" Backer Board Wrap under Vinyl Siding  
3-Tab Fiberglass Shingles  
7/16" OSB Roof Sheathing  
Dead Bolt Locks at Front and Rear (Keyed Alike)  
Vinyl Single Hung Windows w/ Grids  
Foam All Exterior Windows  
38"x 82" R.O. 6 Panel Residential Front Door (No Storm)  
34"x 82" R.O. 6 Panel Residential Rear Door (No Storm)  
2x6 Floor Joists 16" O.C. (14' & 28' Wide)  
2x8 Floor Joists 16" O.C. (16' & 32' Wide)  
20 LB Roof Load  
2x4 Exterior Walls 16" O.C.  
Light Fixtures at All Exterior Doors  
Full Length Chassis w/ Outriggers  
99.5" I-Beam Spread, Detachable Hitch

### Interior Standards

Factory Select Interior Décor  
Door Stop All 3 Sides  
94" Flat Ceilings  
Blown Textured Ceiling w/ Seams  
OSB Tounge & Groove Floor Decking  
Vinyl Wall Panels Throughout  
Flat Wrapped Moldings Throughout  
Factory Select Lino T/O  
Wire Closet Shelving  
3 Hinge Interior Doors

**Because of continuous product improvements, specifications**  
are subject to change without notice or obligation

### Electrical, Plumbing & Heating

Smoke Detectors in Main Living Areas &  
All Bedrooms  
200 AMP Service, Electric Furnace  
40 Gallon Electric Water Heater  
Exterior Electrical Receptacle (FDS)  
Copper Wiring, PEX Plumbing  
Metal Heat Ducts  
GFI Receptacles in Kitchen and Baths  
Bedroom Ceiling Lights Throughout  
Plumb & Wire for Washer & Dryer  
Utility Shelf above Washer & Dryer

### Kitchen Standards

Electric Coil Top Range  
18cf Refrigerator  
30" Power Range Hood  
30" Overhead Cabinets w/ Fixed Center Shelves  
Raised Panel MDF Wrapped Cabinet Doors & Stiles  
Concealed Cabinet Door Hinges  
(1) Bank of Drawers w/ Residential Rails & Guides  
Laminated Countertops  
Stainless Steel Kitchen Sink  
Shelf over Range & Refrigerator

### Bath Standards

54" Tub Shower w/ Surround w/ Anti-Scald Single  
Lever Faucet in Bathroom(s)  
Laminated Countertops  
Mirror above Each Bathroom Sink  
Power Exhaust Fan in Bathroom(s)  
China "Water Saver" Commode in Bathroom(s)  
White Plastic Sink(s) w/ Dual Knob Faucet(s)

## ADVENTURE HOMES, LLC

[www.AdventureHomes.net](http://www.AdventureHomes.net)

1119 Fuller Drive, Garrett, IN 46738

877-510-1955



January  
2022