

2021



Sahara Modular Series Homes



Luxury and Comfort for Less

Your Adventure begins here.

Welcome to Adventure Homes. We offer you the best value in manufactured housing in today's market.

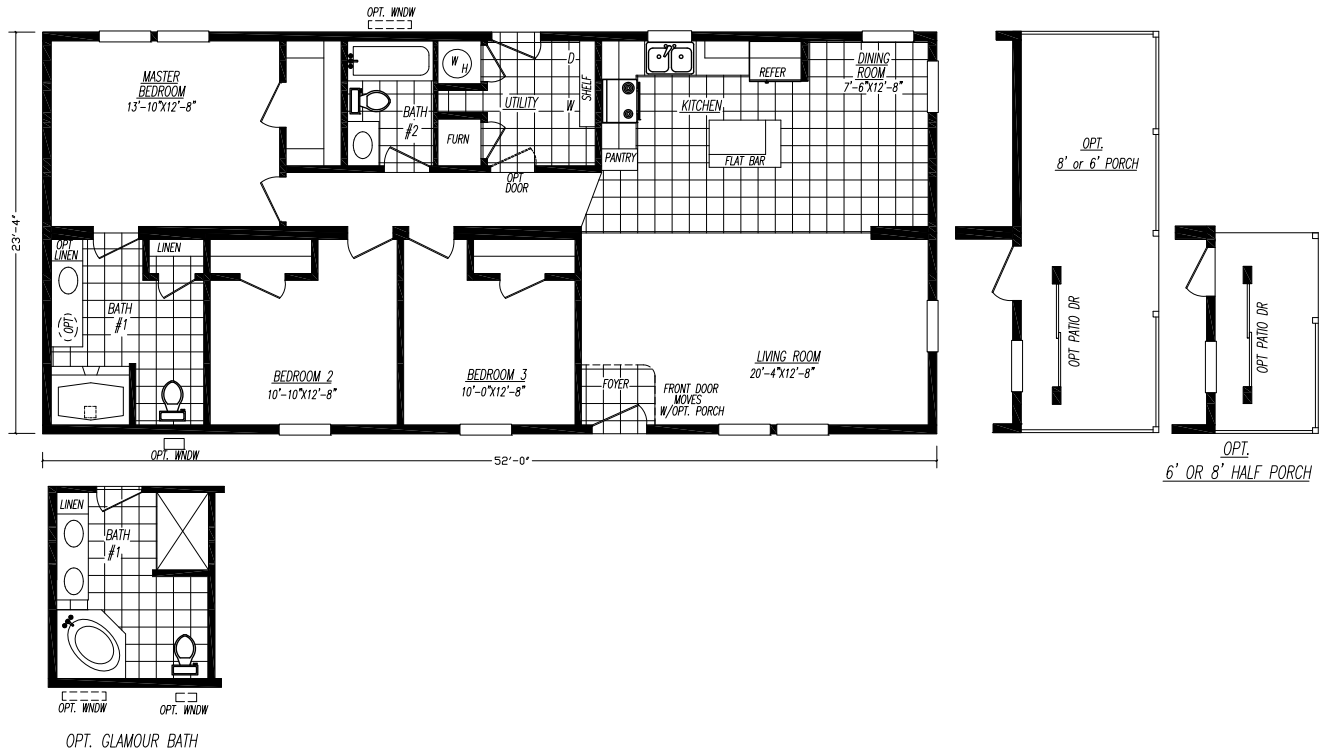
Our homes are built with unbelievable eye appeal & each floorplan can be customized to fit your needs.

Additionally, we offer award winning sales, service and production teams to enhance your value even more.

We look forward to assisting you and welcoming you into our family of satisfied retailers and customers!

MOD3523F

3 Bedroom • 2 Bath • Floor Size 1,214 sq. ft.

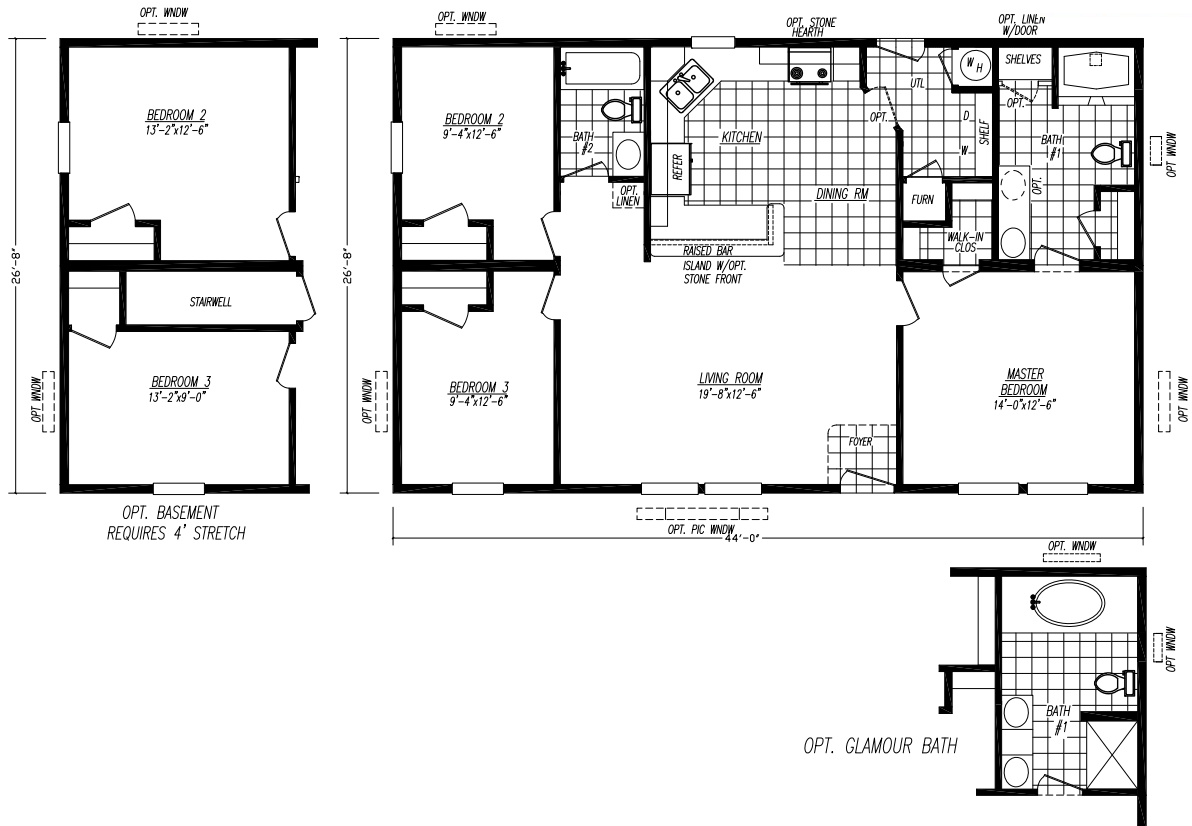


Every home built by Adventure is constructed with premium materials in a climate-controlled enclosed building facility. This helps eliminate weather-damaged building supplies and weather-related delays. These state-of-the art facilities ensure precise and quality construction.

All Adventure Homes Modulares are built based on State Requirements.

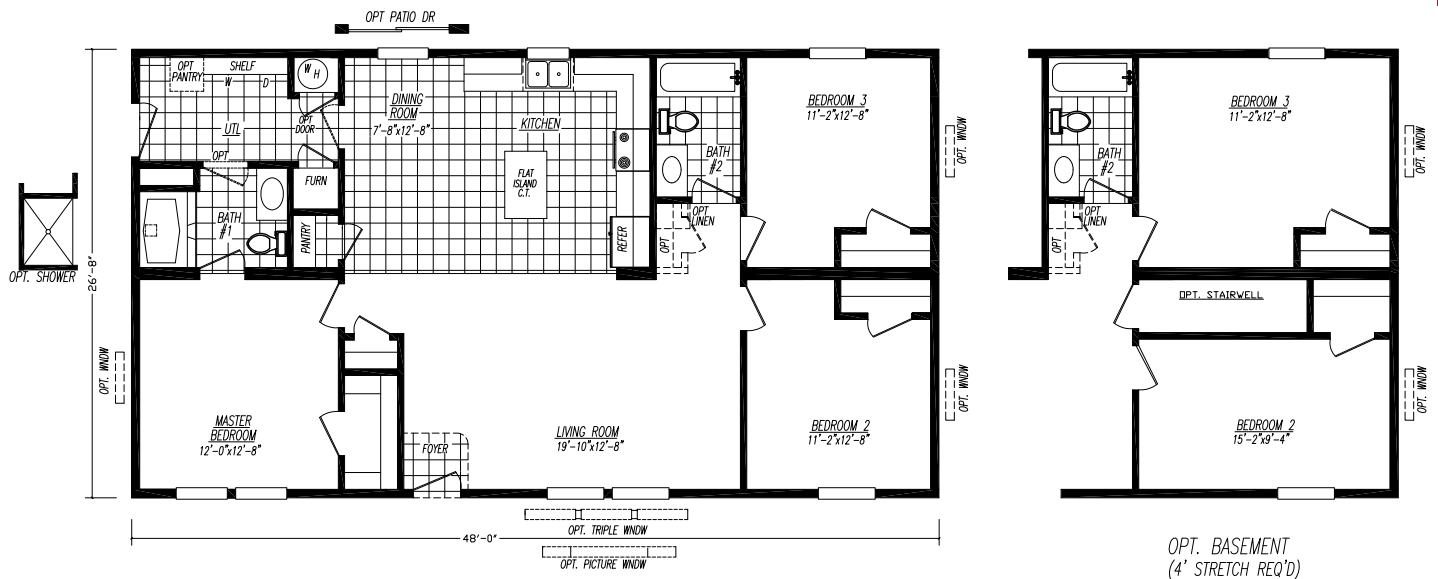
MOD2844-1

3 Bedroom • 2 Bath • Floor Size 1,174 sq. ft.



MOD4483M

3 Bedroom • 2 Bath • Floor Size 1,280 sq. ft.



MOD2852-1

3 Bedroom • 2 Bath • Floor Size 1,387 sq. ft.



MOD4523U

3 Bedroom • 2 Bath • Floor Size 1,387 sq. ft.



MOD2856-1

3 Bedroom • 2 Bath • Floor Size 1,494 sq. ft.



MOD4603GT

3 Bedroom • 2 Bath • Floor Size 1,600 sq. ft.



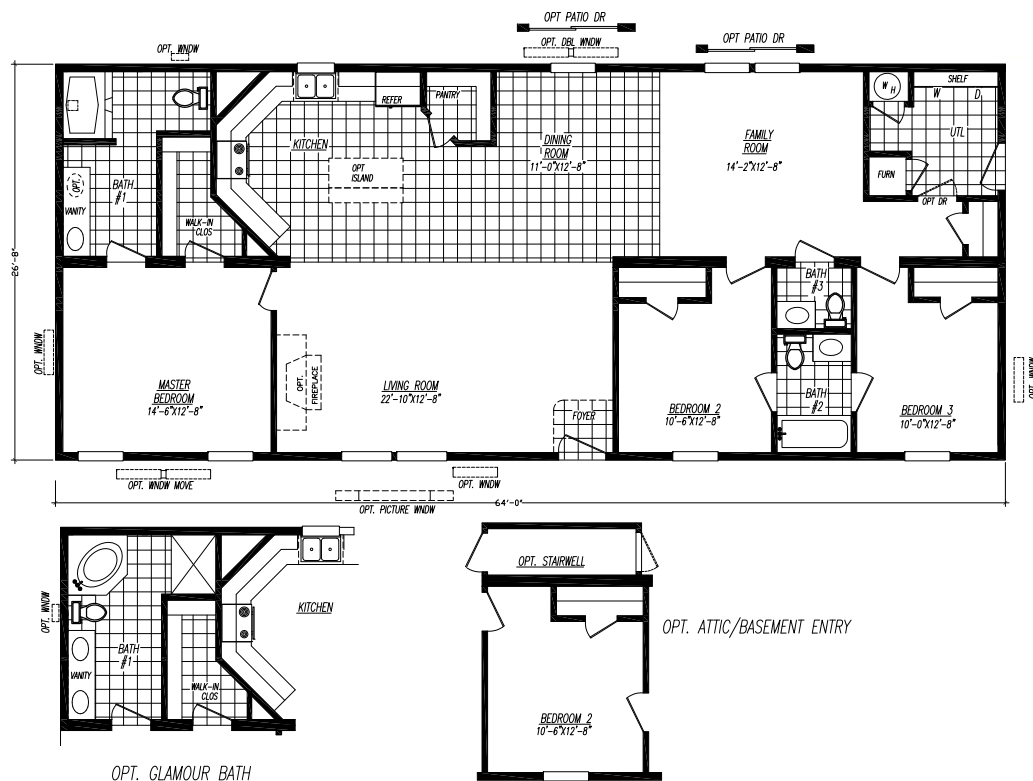
MOD4603S

3 Bedroom • 2 Bath • Floor Size 1,600 sq. ft.



MOD4643L

3 Bedroom • 2 Bath • Floor Size 1,707 sq. ft.



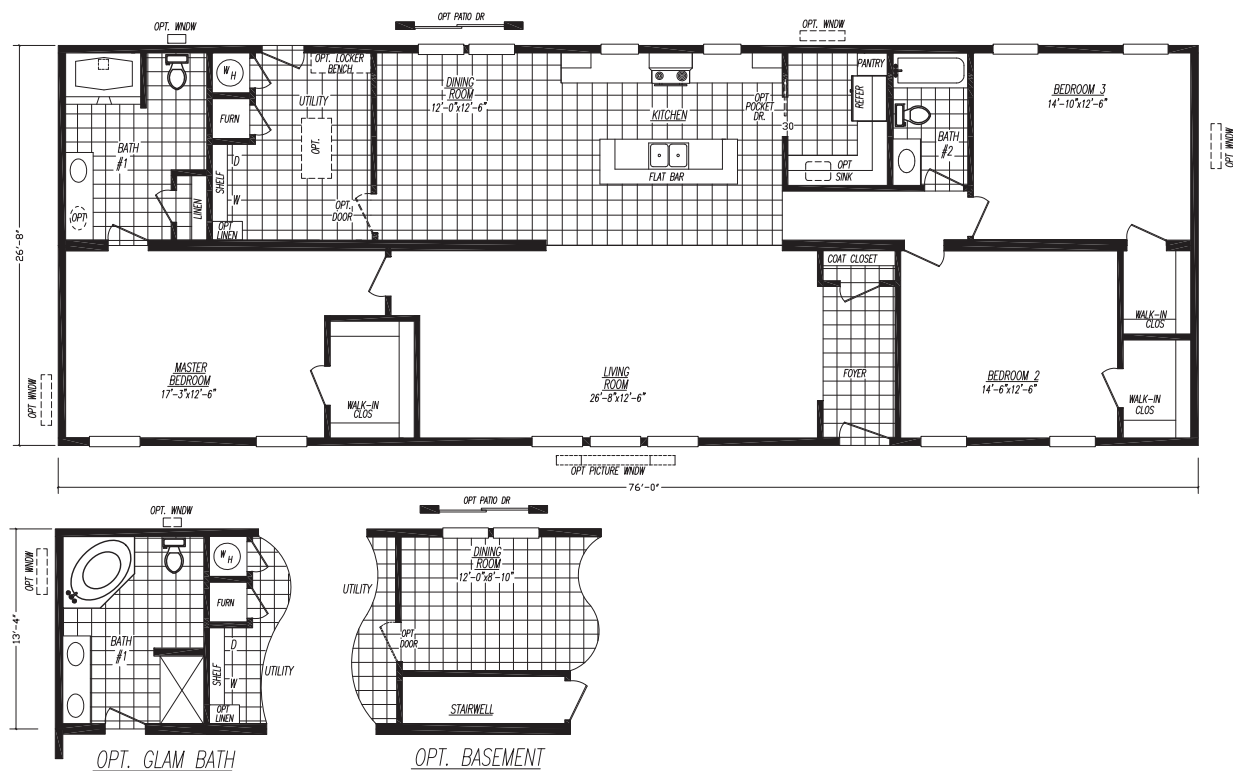
MOD4683B

3 Bedroom • 2 Bath • Floor Size 1,814 sq. ft.



MOD4763N

3 Bedroom • 2 Bath • Floor Size 2,027 sq. ft.



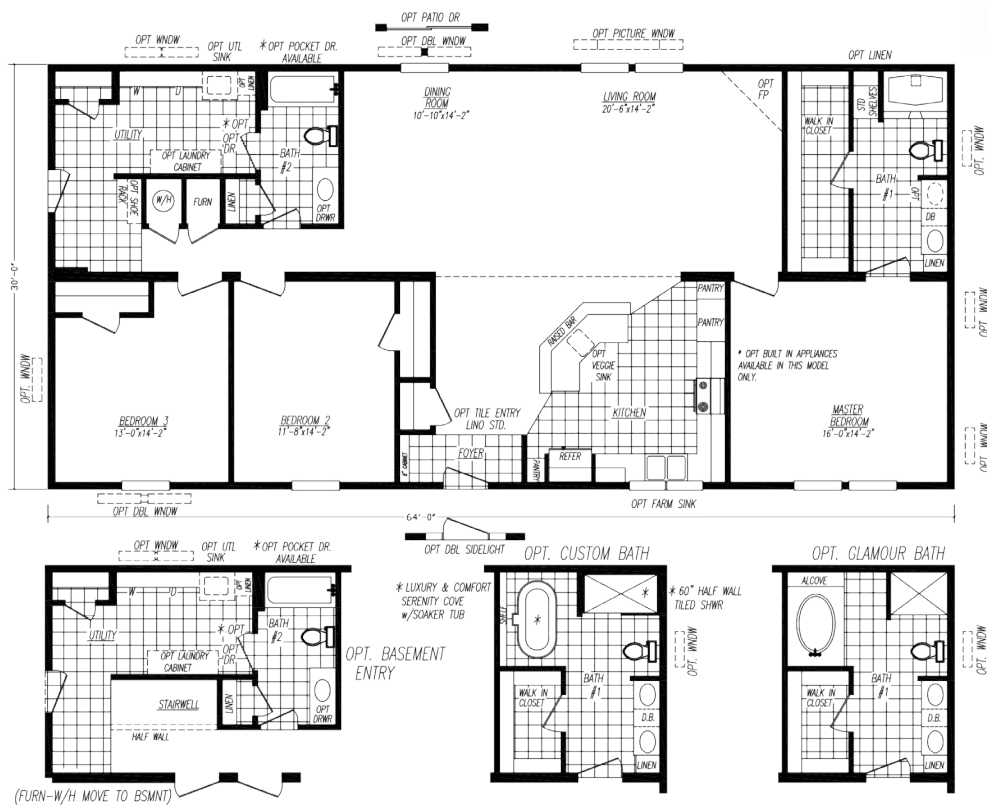
MOD0563S

3 Bedroom • 2 Bath • Floor Size 1,680 sq. ft.



MOD0643B

3 Bedroom • 2 Bath • Floor Size 1,920 sq. ft.



MOD0643FF

3 Bedroom • 2 Bath • Floor Size 1,920 sq. ft.



MOD0684F

4 Bedroom • 2 Bath • Floor Size 2,040 sq. ft.



MOD0763E

3 Bedroom • 2 Bath • Floor Size 2,280 sq. ft.



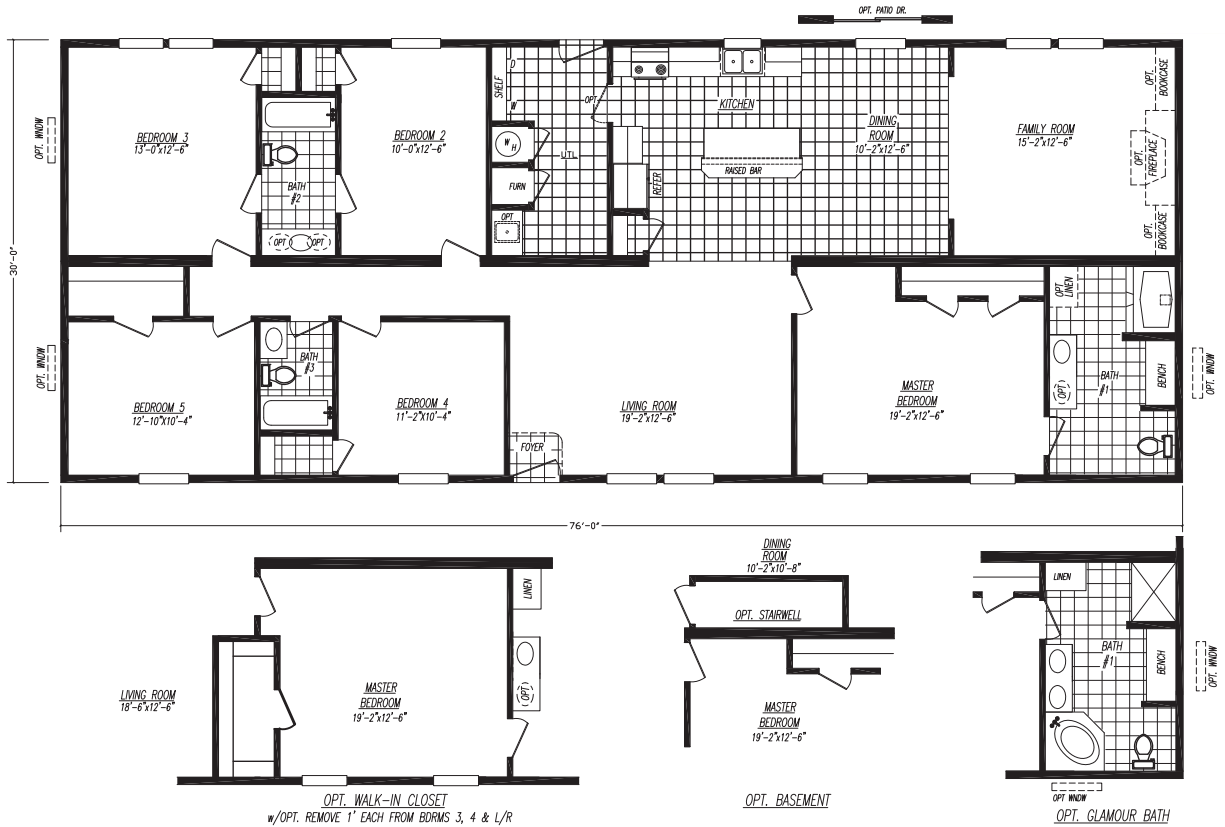
MOD0764L

4 Bedroom • 2 Bath • Floor Size 2,280 sq. ft.



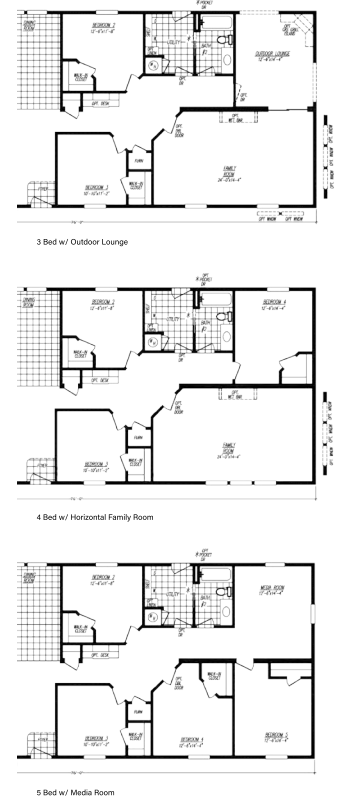
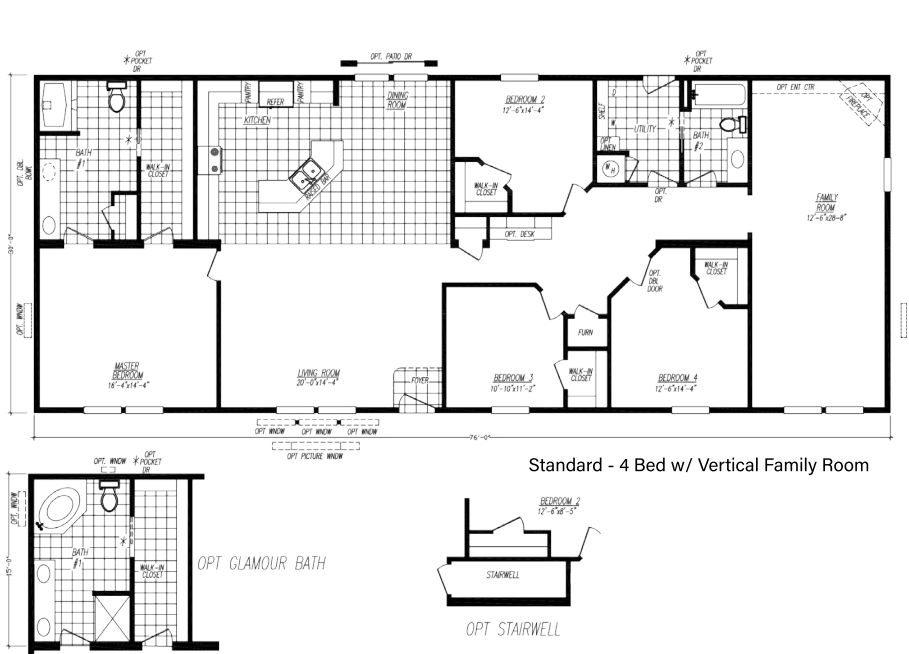
MOD0765M

5 Bedroom • 3 Bath • Floor Size 2,280 sq. ft.



MOD0764R

4 Bedroom • 2 Bath • Floor Size 2,280 sq. ft.



Sahara Modular Series

Standard Features

Frame / Floor

2"x 8" Solid Joist (24' Wide)
2"x 10" Solid Joist (28' & 32' Wide)
Disposable Carrier
OSB Tongue & Groove Flooring
Double 2"x 10" Rim Joist
16oz. Plush "Shaw" Carpet
3/8" Rebond Carpet Pad

Exterior

2"x 6" Exterior Walls w/ R-21 Insulation
7/16" OSB Wrap
Housewrap & Ice/Water Shield
Vinyl Siding by "Georgia Pacific"
12" Raised Panel Shutters (Front Door Side)
Vinyl Single Hung Windows w/ Grids (Low "E" Glass)
Foam All Exterior Windows
38"x 82" R.O. Residential Front Door (No Storm)
34"x 82" R.O. Residential Rear Door (No Storm)
30lb GSL Roof Load
Tape All Windows & Doors

Ceiling / Roof

8ft Flat / Stomped Ceiling Texture
5/12 Roof Pitch w/ Full Length Ridge Vent
Architectural Shingles by "CertainTeed"
R-60 Roof Insulation
Beamless Mateline

Kitchen / Bath

"Whirlpool" Electric Coil Top Range (White)
"Whirlpool" 18cf Refrigerator (White)
Stainless Steel Kitchen Sink
China Bath Sinks w/ Single Lever Faucet
1pc Garden Tub Bath #1 (where available)
w/ Anti-Scald Metal Faucet
1pc Tub/Shower Combo Bath #2 (where available)
w/ Anti-Scald Metal Faucet
Raised Panel MDF Wrapped Cabinet Doors & Stiles
30" Overhead Cabinets w/ Fixed Center Shelves
Concealed Cabinet Door Hinges
1"x 4" Laminate Backsplash
Shelf over Range & Refrigerator
Vinyl Flooring by "Congoleum"

Interior Walls / Doors

1/2" Finished Drywall T/O Home
2"x 4" Interior Walls 16" On Center
Wrapped Flat Moldings T/O Home
6 Panel White Interior Doors T/O Home
Door Stop - All 3 Sides
3 Hinge Interior Doors

Heating / Plumbing

40 Gallon Electric Water Heater by "Rheem"
All Plumbing - Stubbed Through Floor
Shut Offs at All Fixtures
(1) Exterior Faucet - STD Location
Whole Home Shut Off
Electric Furnace
Register Boots (Installed at Factory)
Duct Work (NOT INCLUDED)
Plumb & Vent for Washer & Dryer
Return Air Through Ceiling Registers

Electrical

200 Amp Service
Smoke / Carbon Monoxide Detectors (combo)
Exterior Lights at All Doors
Wire for Dryer
5 Wire Digital Thermostat
(2) Exterior GFIs
Whole House Fan Switch

Interior

2" Faux Wood Mini Blinds T/O Homes
Wire Closet Shelving by "Closet Maid"
Lino Entry at Front Door
Utility Shelf above Washer & Dryer

Because of continuous product improvements, specifications
are subject to change without notice or obligation

All features subject to State Approvals

ADVENTURE HOMES, LLC

www.AdventureHomes.net

1119 Fuller Drive, Garrett, IN 46738

877-510-1955



January
2021