

2021



Nevada Series

Homes

Single & Sectional



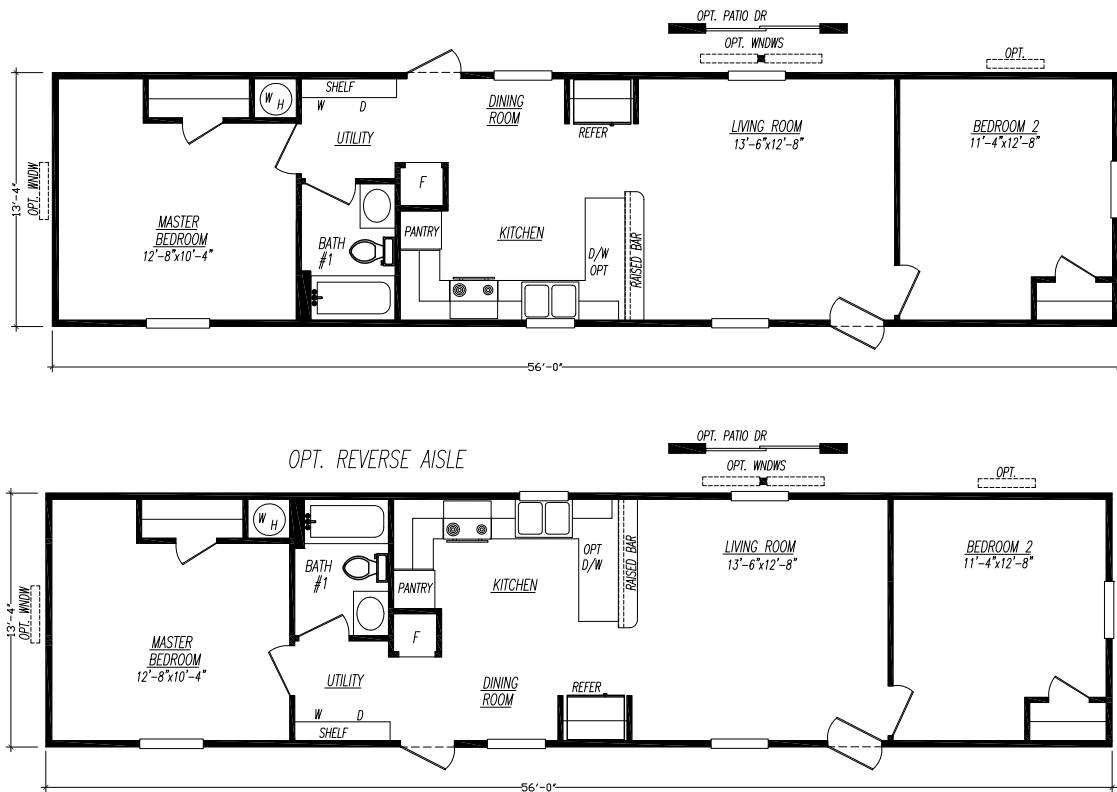
Luxury and Comfort for Less

Your Adventure begins here.

Welcome to Adventure Homes. We offer you the best value in manufactured housing in today's market. Our homes are built with unbelievable eye appeal & product standards are often above and beyond HUD code. Additionally, we offer award winning sales, service and production teams to enhance your value even more. **We look forward to assisting you and welcoming you into our family of satisfied retailers and customers!**

Model 2562Z-N

2 Bedroom • 1 Bath • Floor Size 747 sq. ft.

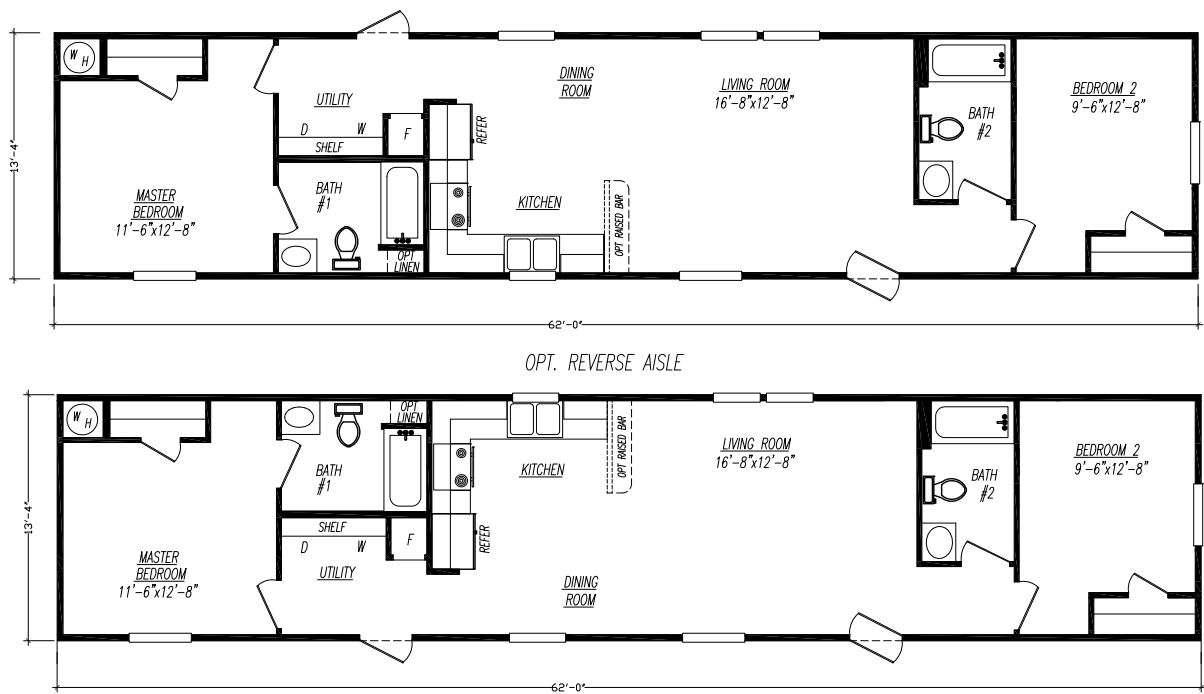


Every home built by Adventure is constructed with premium materials in a climate-controlled enclosed building facility. This helps eliminate weather-damaged building supplies and weather-related delays. These state-of-the art facilities ensure precise and quality construction. All Adventure homes meet, and in many cases exceed HUD code.

Adventure Homes Nevada Series is standard Factory Select Interior Finishes.

Model 2622X-N

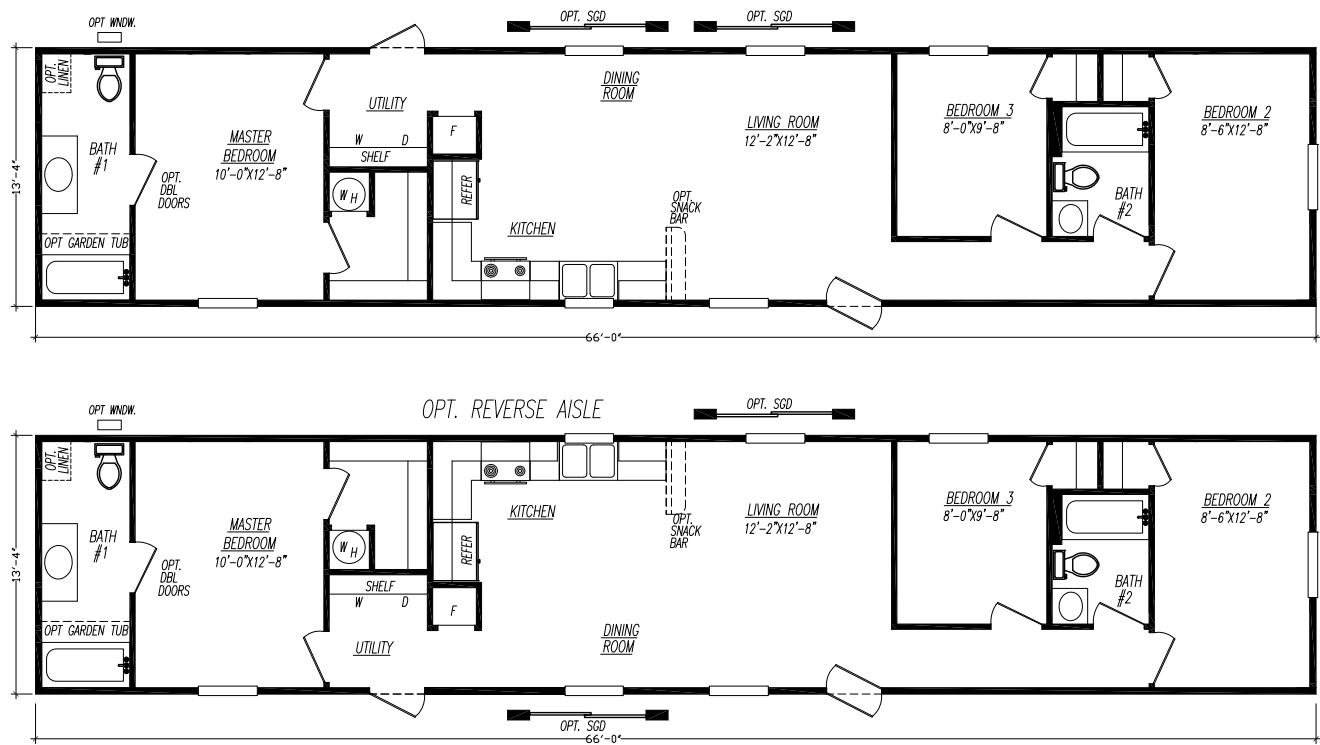
2 Bedroom • 2 Bath • Floor Size 827 sq. ft.



Model 2663F-N

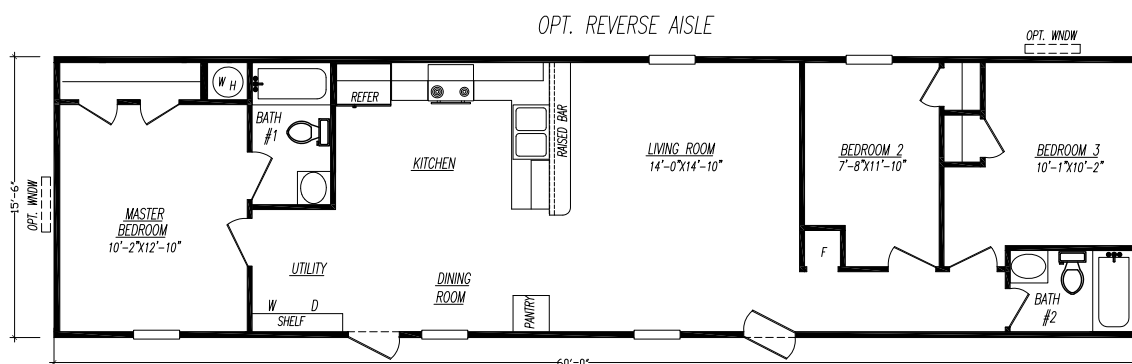
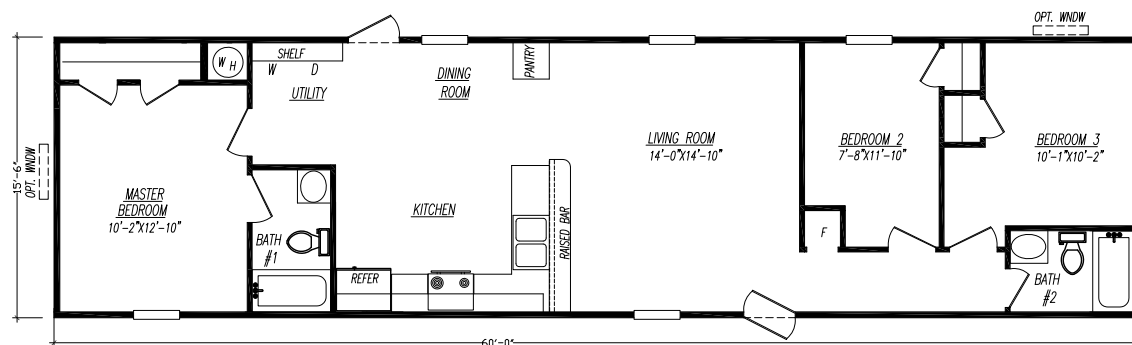
3 Bedroom • 2 Bath • Floor Size 880 sq. ft.

3



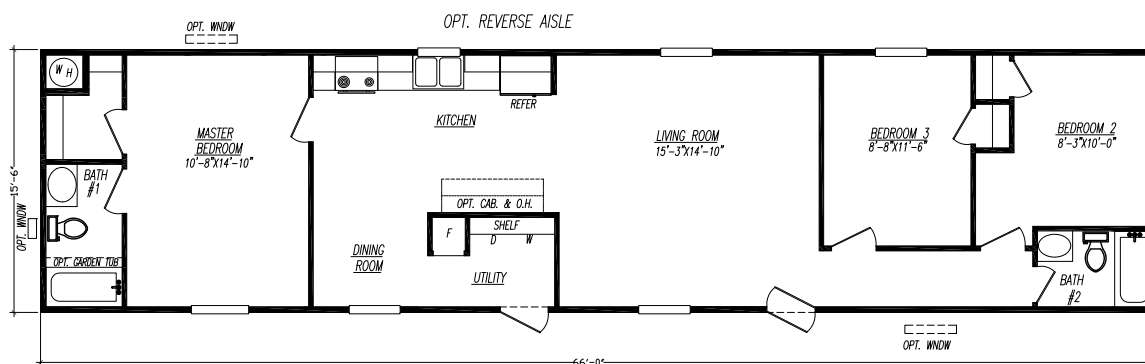
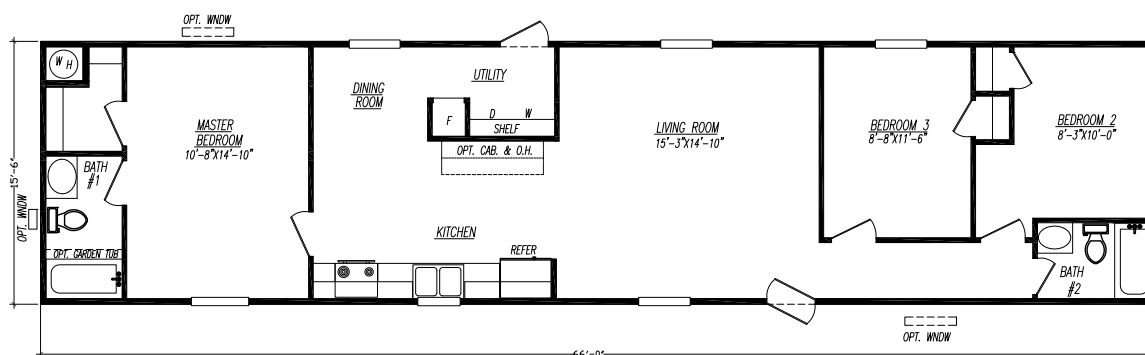
Model 6603U-N

3 Bedroom • 2 Bath • Floor Size 930 sq. ft.



Model 6663X-N

3 Bedroom • 2 Bath • Floor Size 1,023 sq. ft.



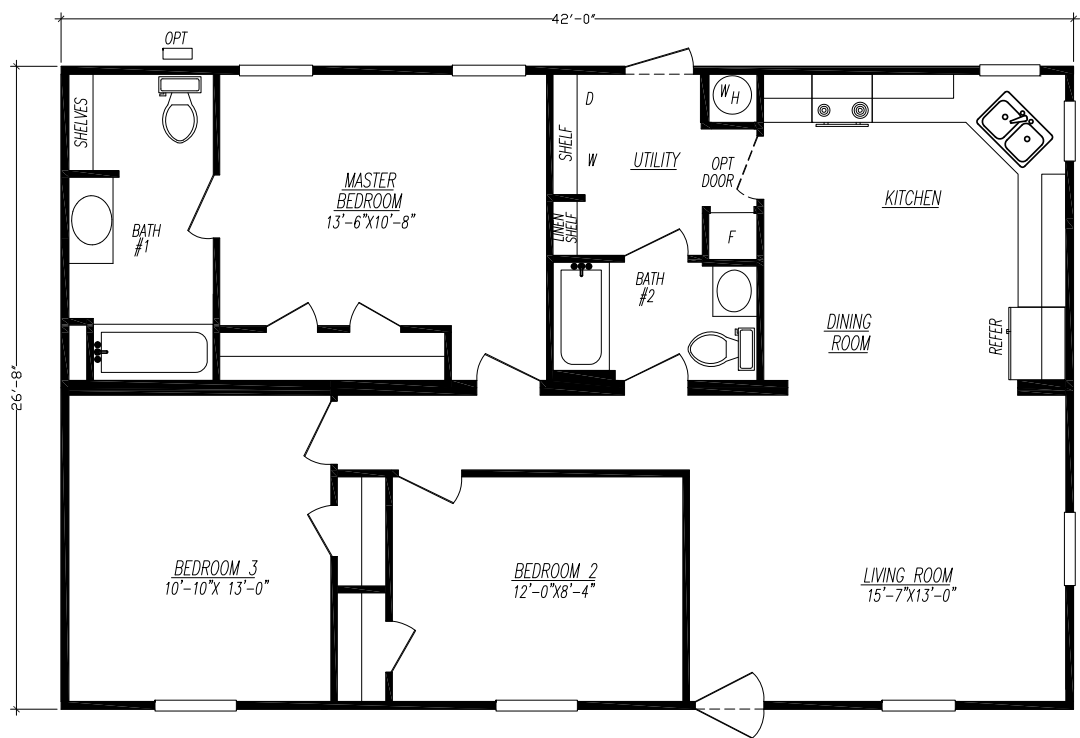
Model 6763B-N

3 Bedroom • 2 Bath • Floor Size 1,178 sq. ft.



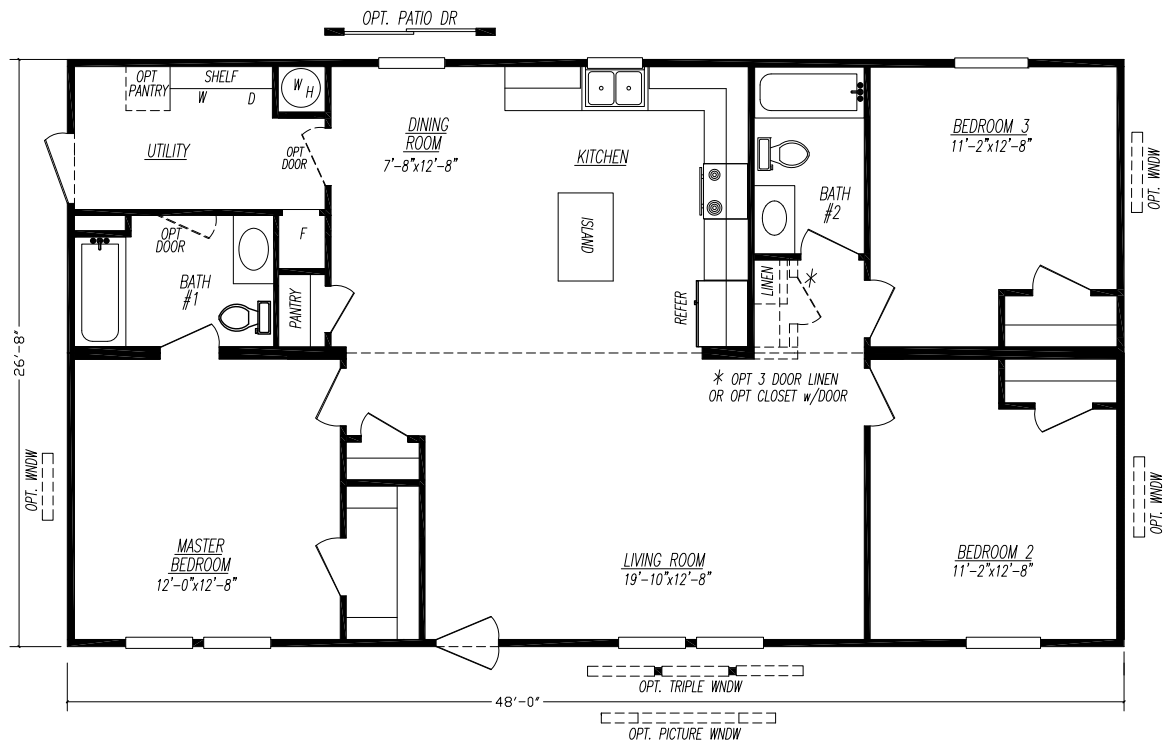
Model 4423S-N

3 Bedroom • 2 Bath • Floor Size 1,120 sq. ft.



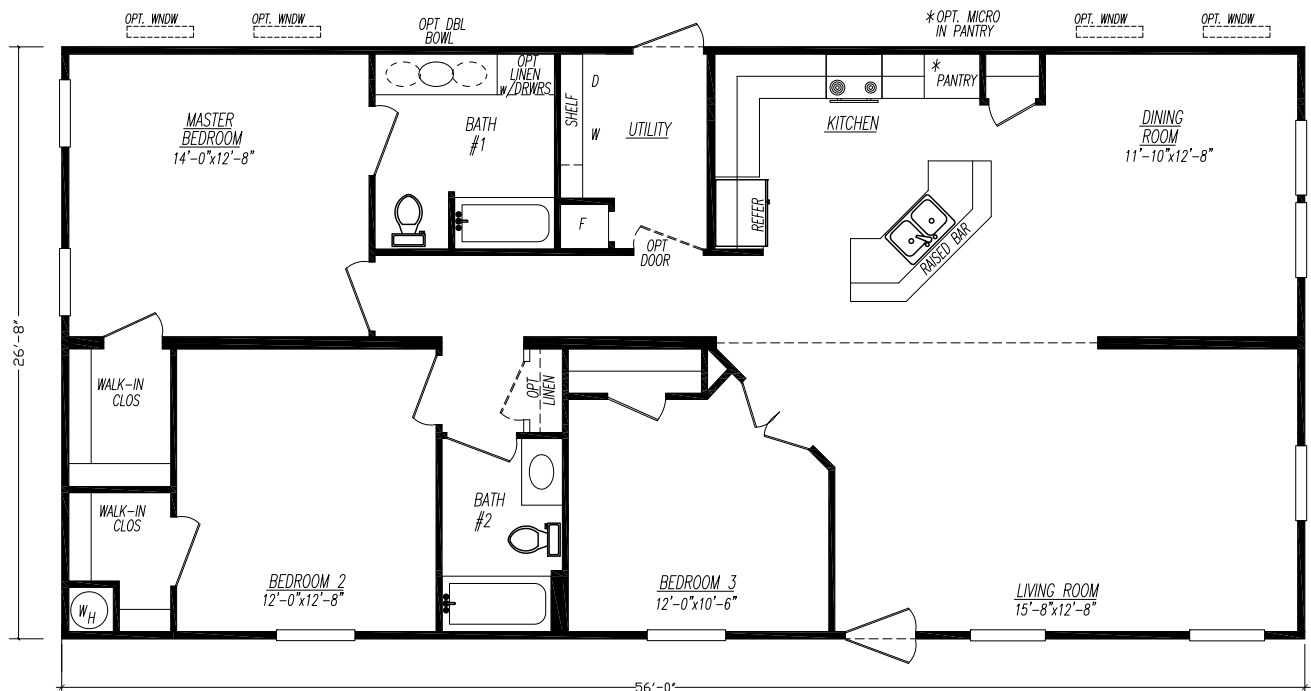
Model 4483M-N 3 Bedroom • 2 Bath • Floor Size 1,280 sq. ft.

Model 4483M-N 3 Bedroom • 2 Bath • Floor Size 1,280 sq. ft.



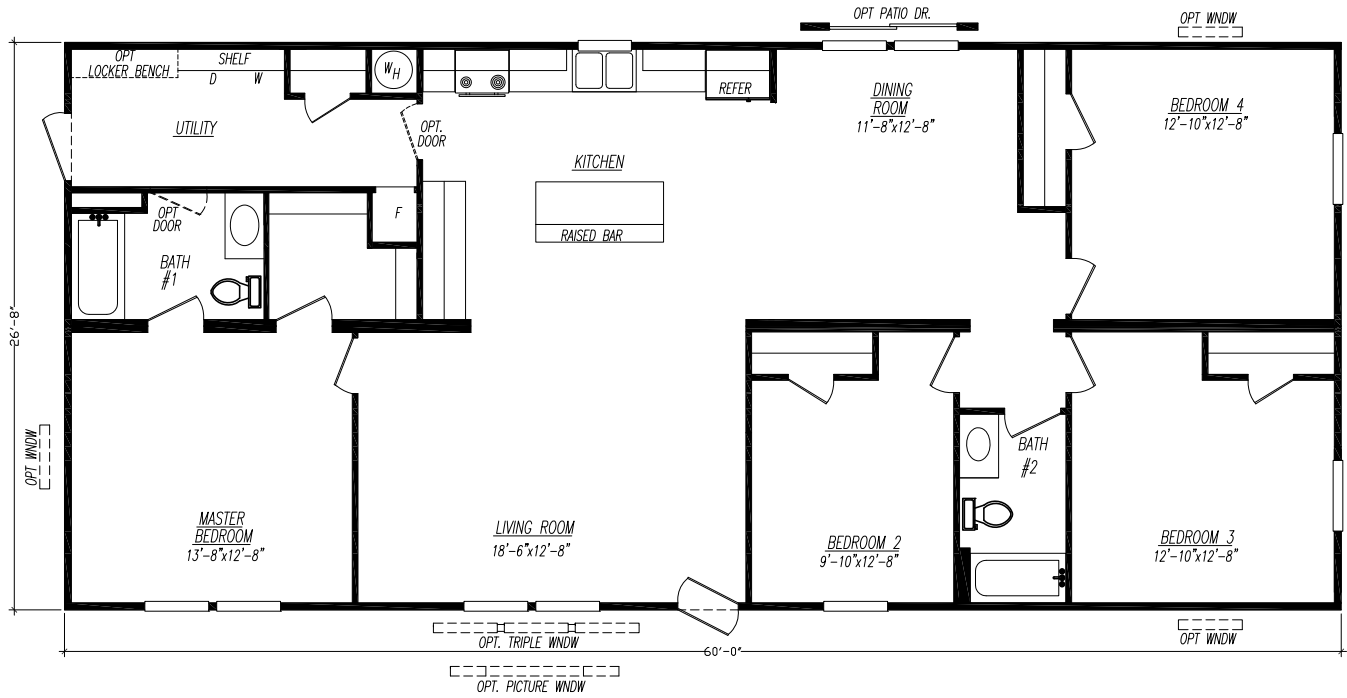
Model 4563Z-N 3 Bedroom • 2 Bath • Floor Size 1,494 sq. ft.

Model 4563Z-N 3 Bedroom • 2 Bath • Floor Size 1,494 sq. ft.



Model 4604A-N

4 Bedroom • 2 Bath • Floor Size 1,600 sq. ft.



Nevada Series

Standard Features

Exterior Standards

Thermal Zone III Construction

Nominal 3/12 Roof Pitch

R-28-11-11 Insulation

(Additional Windows & Doors May Require Higher Insulation Values)

Vinyl Siding by "Georgia Pacific"

1/4" Backer Board Wrap under Vinyl Siding

25 year Fiberglass Shingles by "Certainteed"

7/16" OSB Roof Sheathing

Dead Bolt Locks at Front and Rear (Keyed Alike)

Vinyl Single Hung Windows w/ Grids

Foam All Exterior Windows

38"x 82" R.O. Front Door w/ Storm

34"x 82" R.O. Blank Outswing Rear Door (No Storm)

2x6 Floor Joists 16" O.C. (14' & 28' Wides)

2x8 Floor Joists 16" O.C. (16' & 32' Wides)

20 LB Roof Load

2x4 Exterior Walls 16" O.C.

OSB Floor Decking

Light Fixtures at All Exterior Doors

Full Length Chassis w/ Outriggers 96" O.C.

99.5" I-Beam Spread, Detachable Hitch

Interior Standards

Factory Select Interior Décor

Door Stop All 3 Sides

94" Flat Ceilings

Blown Textured Ceiling w/ Seams

Vinyl Wall Panels Throughout

Flat Wrapped Moldings Throughout

Factory Select Lino T/O

Wire Closet Shelving by "Closet Maid"

6 Panel White Interior Doors Throughout

3 Hinge Interior Doors

Electrical, Plumbing, & Heating

Smoke Detectors in Main Living Areas &

All Bedrooms

200 AMP Service, Electric Furnace

40 Gallon Electric Water Heater

Exterior Electrical Receptacle (FDS)

Copper Wiring, PEX Plumbing

Metal Heat Ducts

GFI Receptacles in Kitchen and Baths

Bedroom Ceiling Lights Throughout

Plumb & Wire for Washer & Dryer

Utility Shelf above Washer & Dryer

Kitchen Standards

"Whirlpool" Electric Coil Top Range (White)

"Whirlpool" 18cf Refrigerator (White)

30" Power Range Hood

30" Overhead Cabinets w/ Fixed Center Shelves

Raised Panel MDF Wrapped Cabinet Doors & Stiles

Concealed Cabinet Door Hinges

(1) Bank of Drawers w/ Residential Rails & Guides

Laminated Countertops

Stainless Steel Kitchen Sink

Shelf over Range & Refrigerator

Bath Standards

(2) 54" Tub Shower w/ Surround w/ Anti-Scald Single

Lever Faucet in Bathroom(s)

Laminated Countertops

Mirror above Each Bathroom Sink

Power Exhaust Fans in All Baths

China "Water Saver" Commodes Both Baths

White Plastic Sink(s) w/ Dual Knob Faucets

**Because of continuous product improvements, specifications
are subject to change without notice or obligation**

ADVENTURE HOMES, LLC

www.AdventureHomes.net

1119 Fuller Drive, Garrett, IN 46738

877-510-1955



January
2021