

2021



Mojave Series

Homes

Single



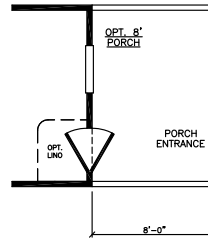
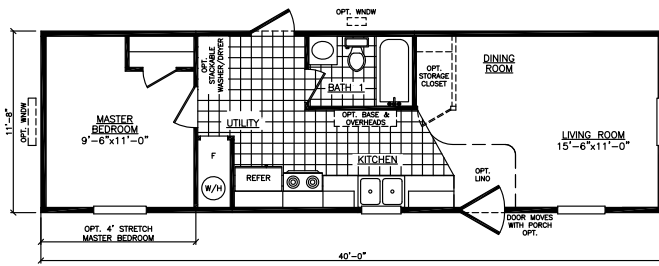
Luxury and Comfort for Less

Your Adventure begins here.

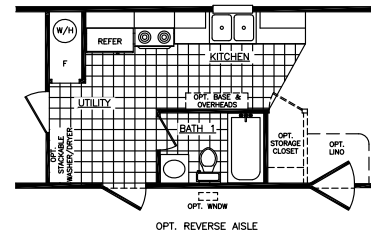
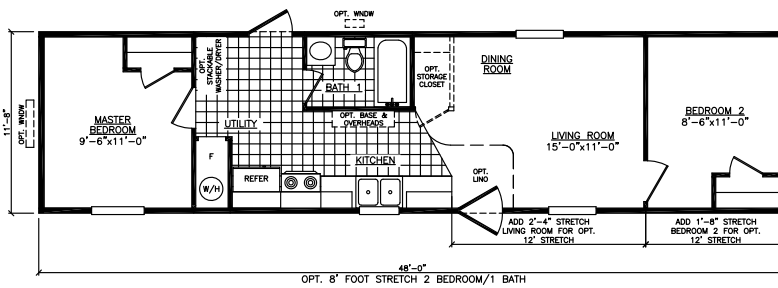
Welcome to Adventure Homes. We offer you the best value in manufactured housing in today's market. Our homes are built with unbelievable eye appeal & product standards are often above and beyond HUD code. Additionally, we offer award winning sales, service and production teams to enhance your value even more. **We look forward to assisting you and welcoming you into our family of satisfied retailers and customers!**

The *Lincoln*

Model 1401S
1 Bedroom • 1 Bath • Floor Size 467 sq. ft.



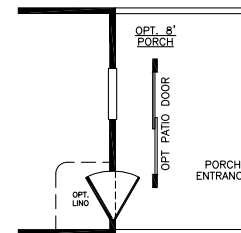
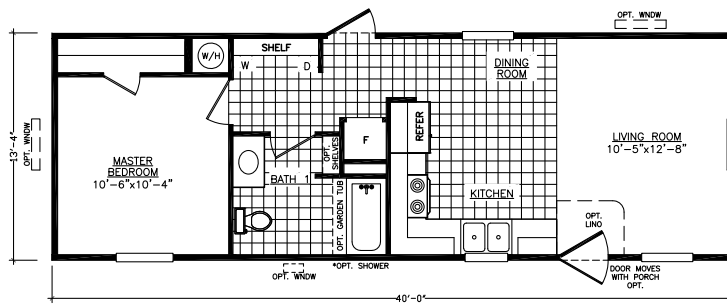
OPT. 4' STRETCH MASTER BEDROOM
OPT. 8' STRETCH 2 BEDROOM/1 BATH
OPT. 12' STRETCH 2 BEDROOM/LIVING ROOM



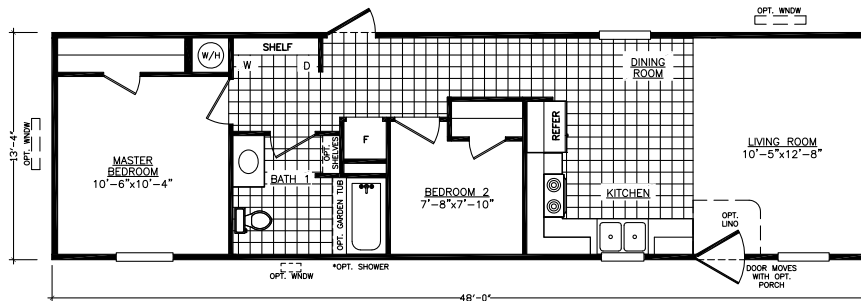
OPT. 8' FOOT STRETCH 2 BEDROOM/1 BATH

The *Vantage*

Model 2401LL
1 Bedroom • 1 Bath • Floor Size 534 sq. ft.



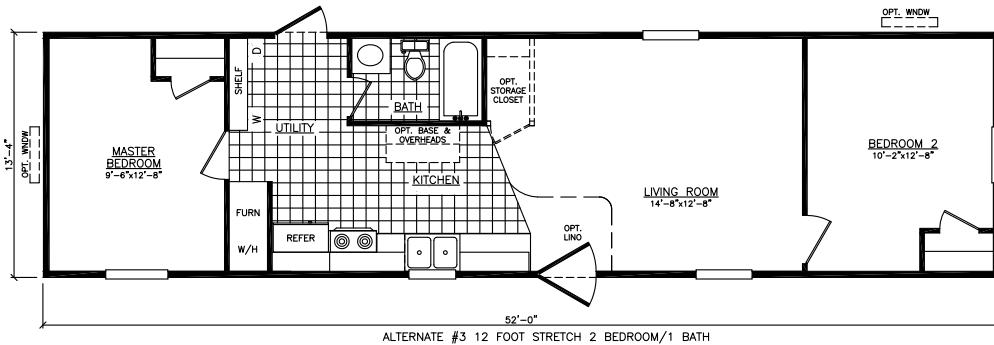
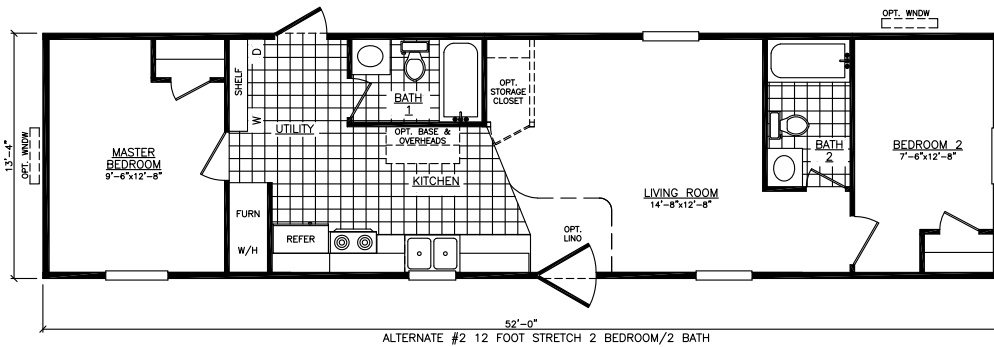
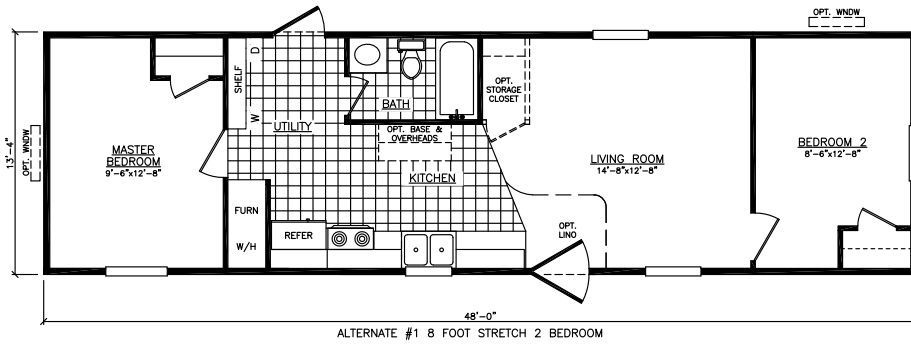
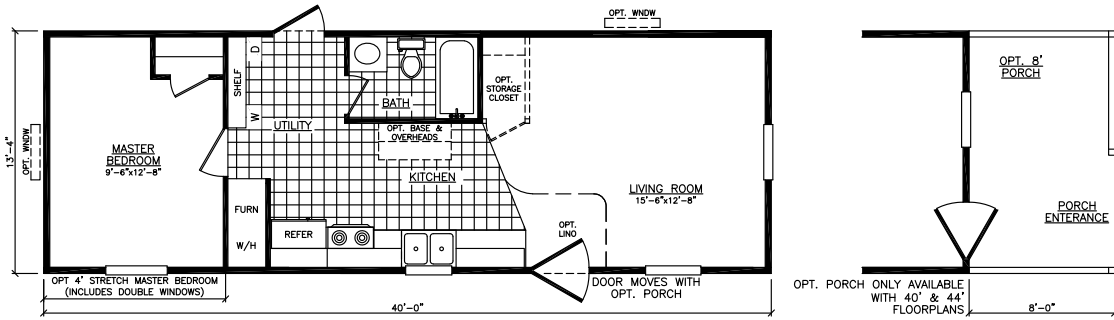
*REVERSE AISLE AVAILABLE



OPT. 8' STRETCH WITH 2ND BEDROOM

The Sequoia

Model 2401S
1 Bedroom • 1 Bath • Floor Size 534 sq. ft.

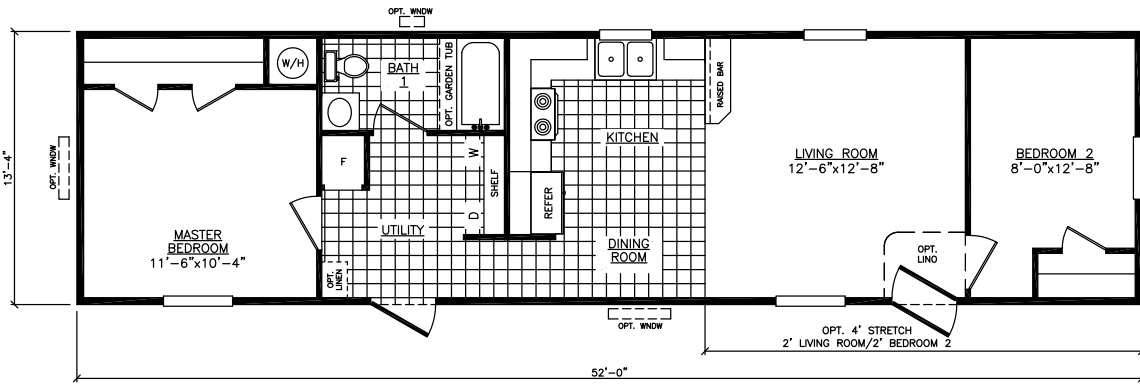
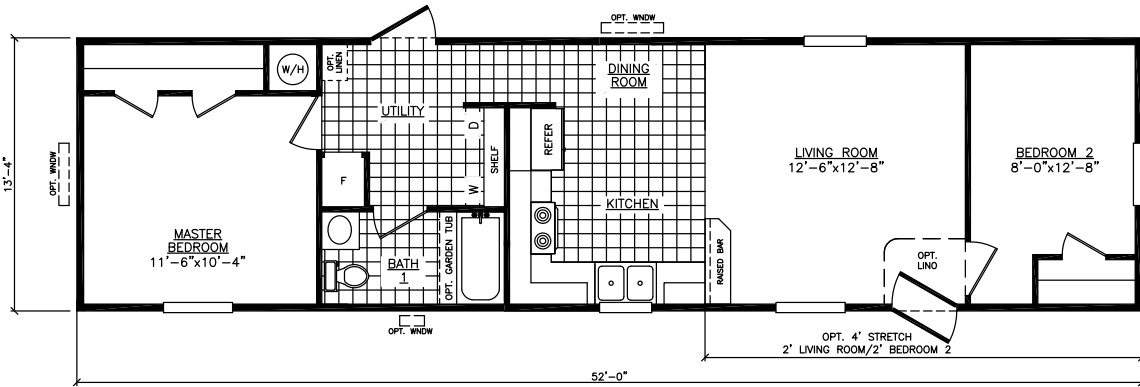


Every home built by Adventure is constructed with premium materials in a climate-controlled enclosed building facility. This helps eliminate weather-damaged building supplies and weather-related delays. These state-of-the-art facilities ensure precise and quality construction. All Adventure homes meet, and in many cases exceed HUD code.

Adventure Homes Mojave Series can be customized to fit your every day needs and wants!

The Sierra

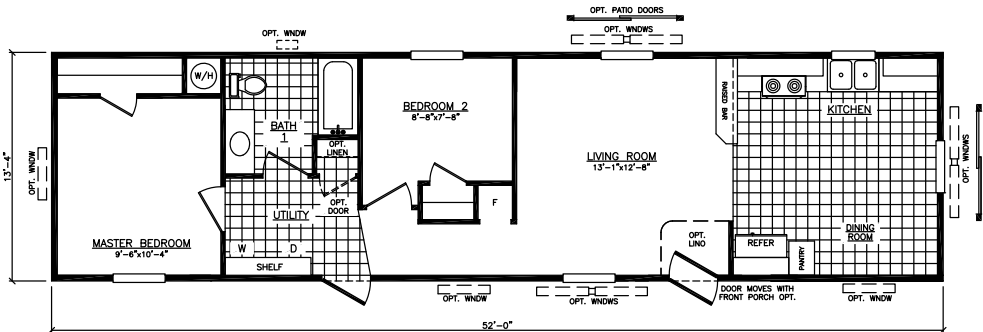
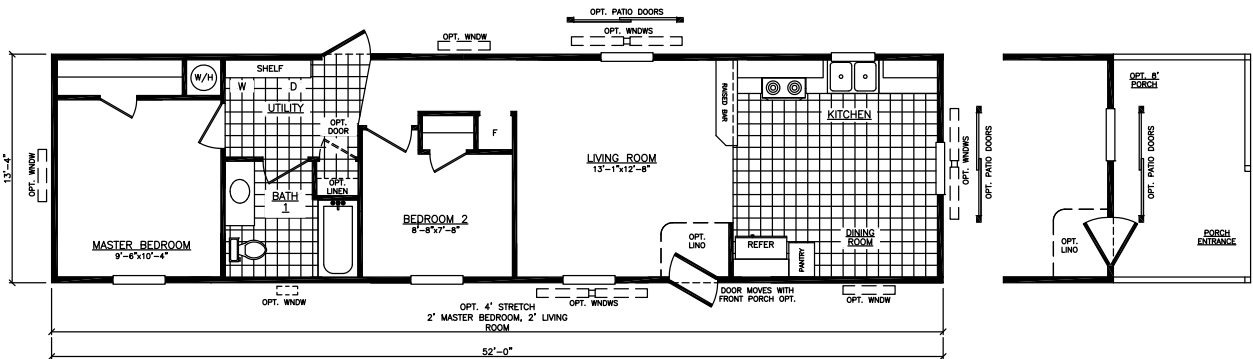
Model 2522C
2 Bedroom • 1 Bath • Floor Size 694 sq. ft.



OPT. REVERSE AISLE

The Northwest

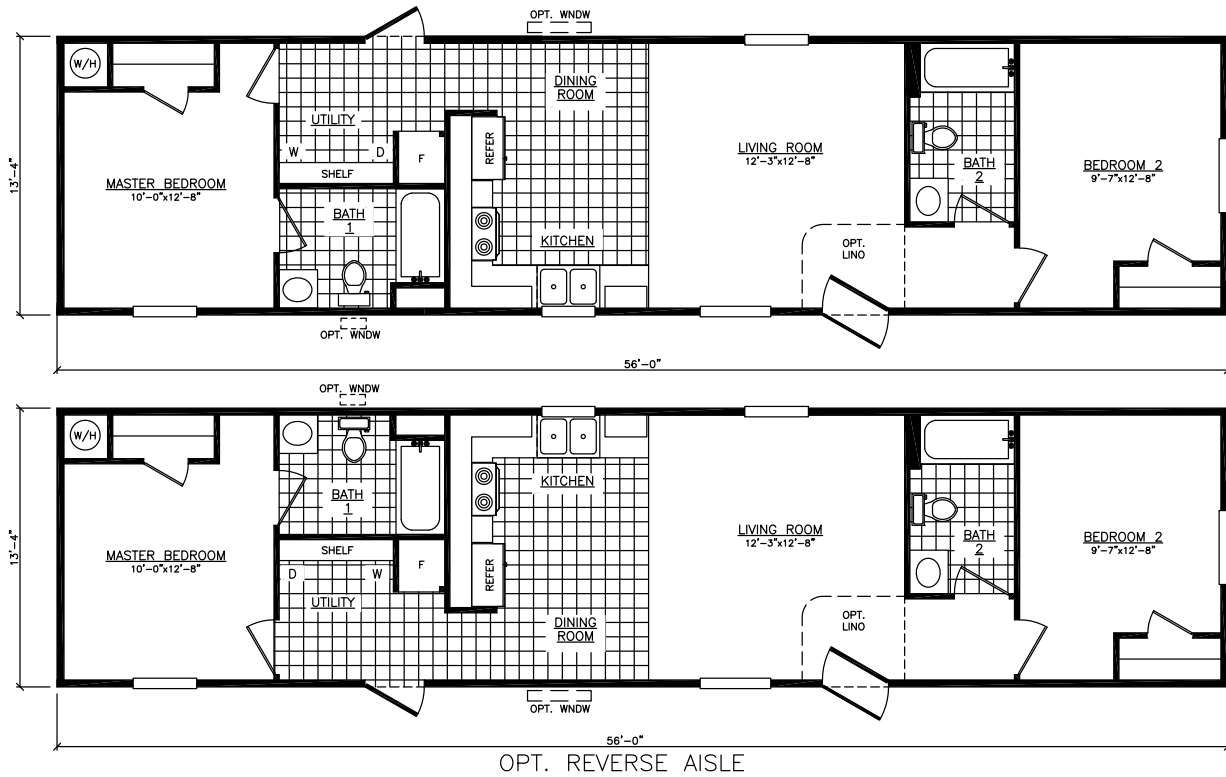
Model 2522W
2 Bedroom • 1 Bath • Floor Size 694 sq. ft.



OPT. REVERSE AISLE

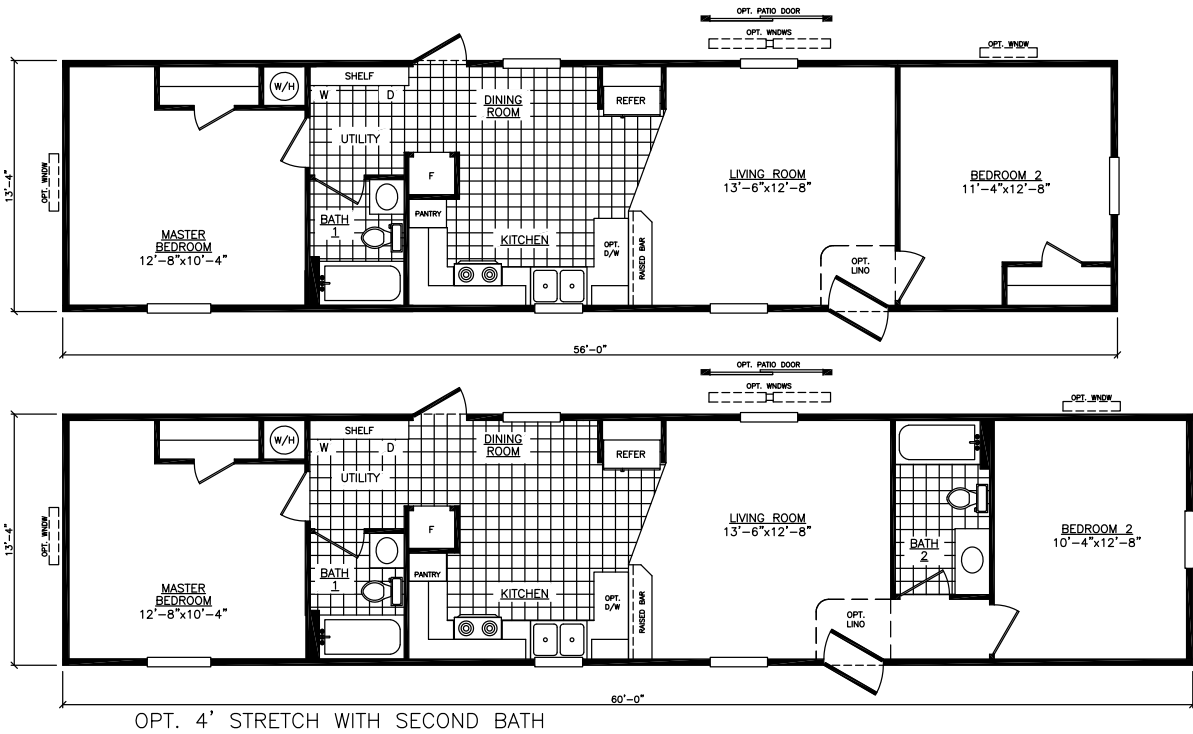
The Omaha

Model 2562U
2 Bedroom • 2 Bath • Floor Size 747 sq. ft.



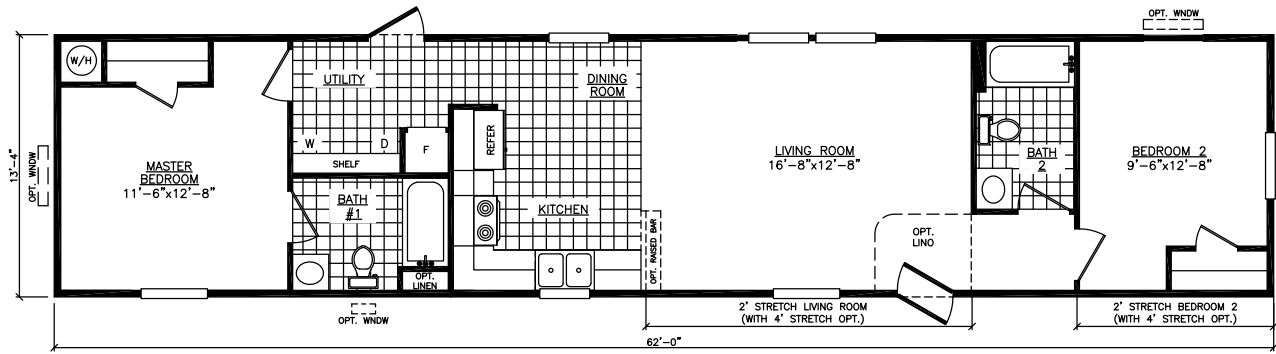
The Totem

Model 2562Z
2 Bedroom • 1 Bath • Floor Size 747 sq. ft.

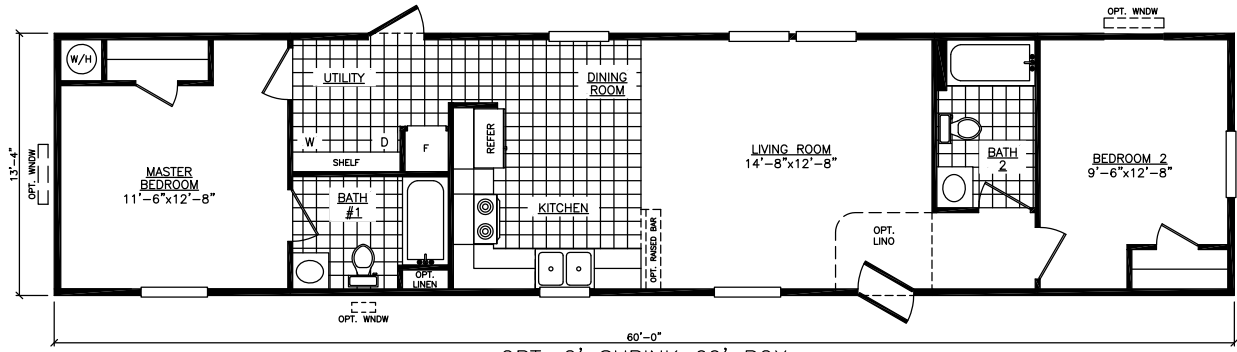


The *Madison*

Model 2622X
2 Bedroom • 2 Bath • Floor Size 827 sq. ft.



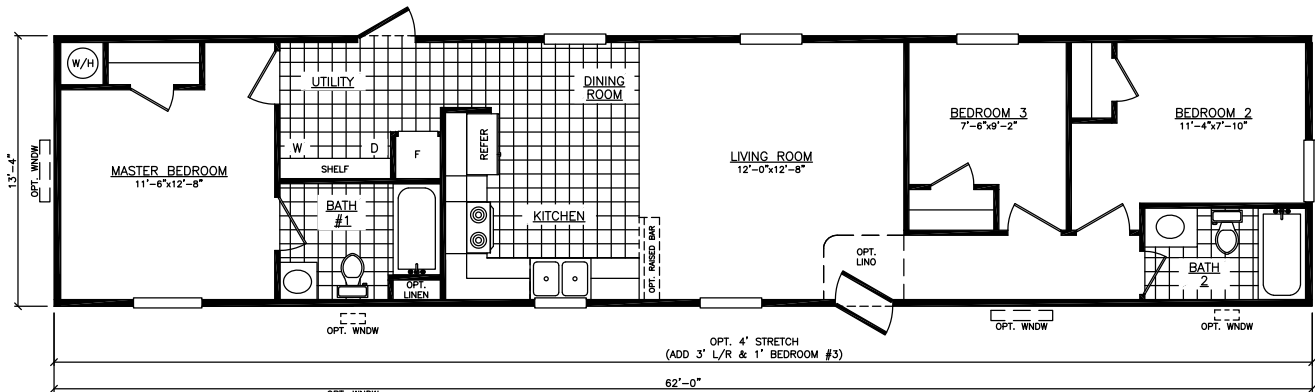
*AVAILABLE WITH REVERSE AISLE



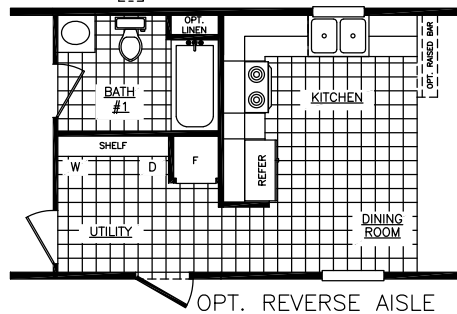
OPT. 2' SHRINK 60' BOX

The *Prairie*

Model 2623X
3 Bedroom • 2 Bath • Floor Size 827 sq. ft.



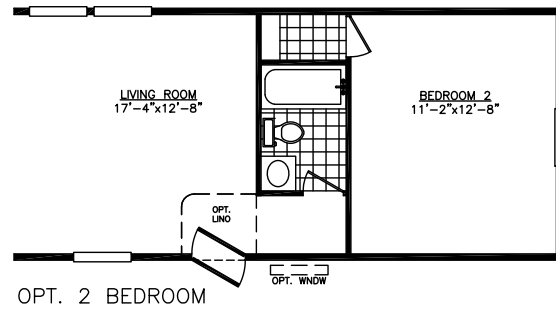
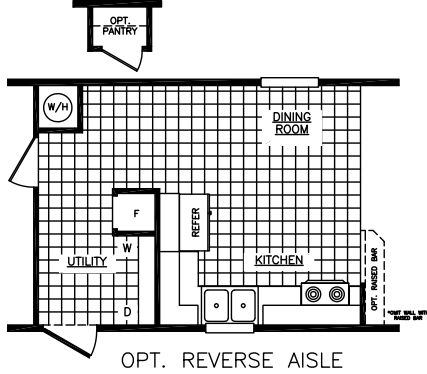
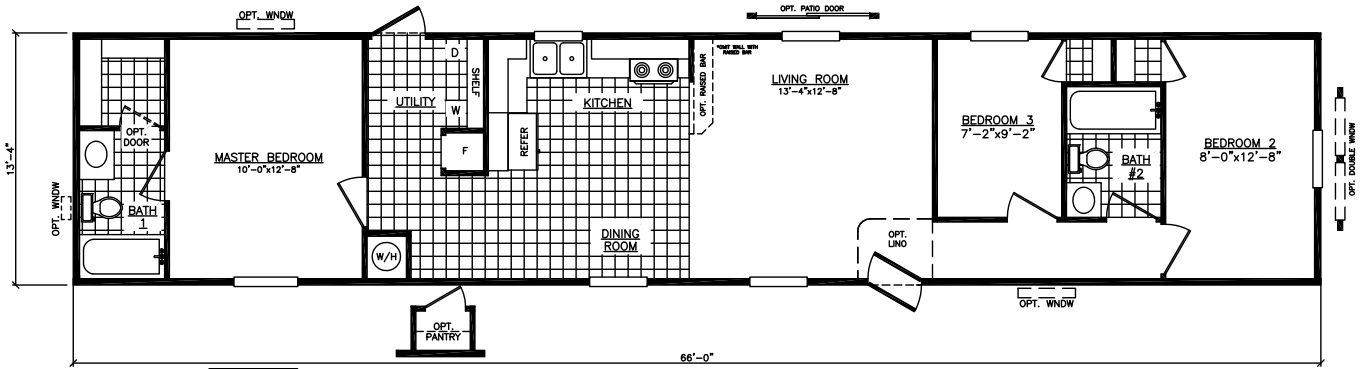
OPT. 2' SHRINK AVAILABLE
(SUBTRACT 1' MASTER BEDROOM & 1' LIVING ROOM WITH SHRINK)



OPT. REVERSE AISLE

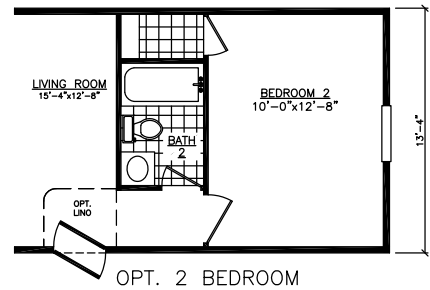
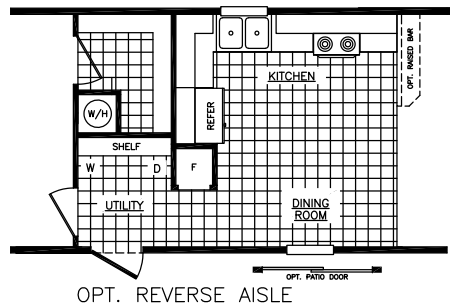
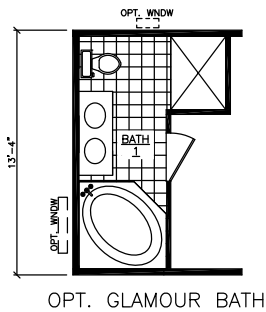
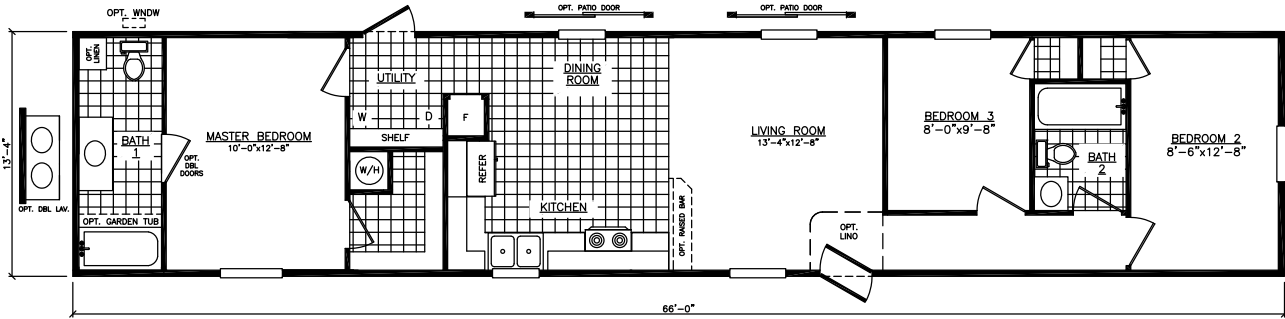
The *Timberland*

Model 2663B
3 Bedroom • 2 Bath • Floor Size 880 sq. ft.



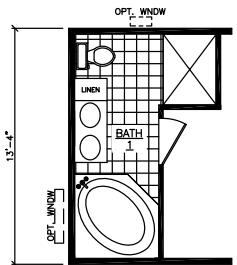
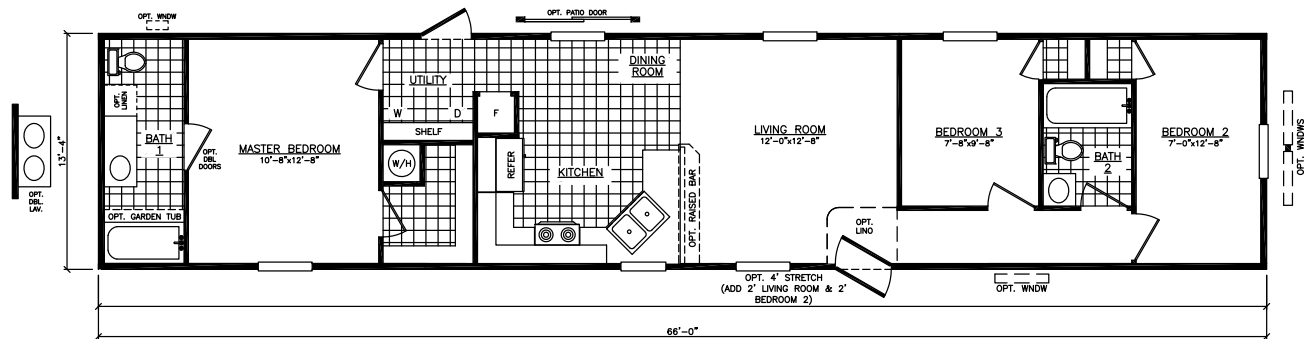
The *Morrison*

Model 2663F
3 Bedroom • 2 Bath • Floor Size 880 sq. ft.

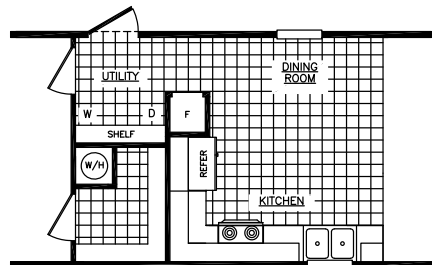


The *Telton*

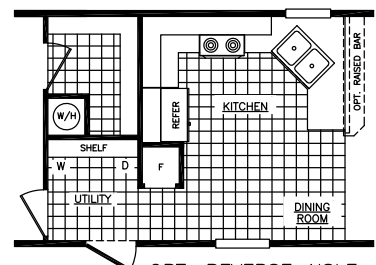
Model 2663W
3 Bedroom • 2 Bath • Floor Size 880 sq. ft.



OPT. GLAMOUR BATH



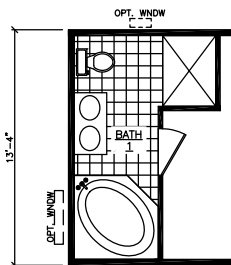
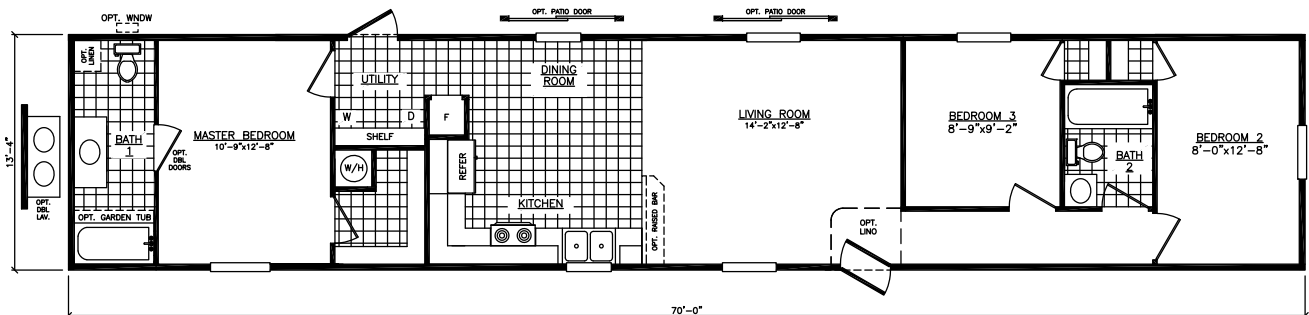
ALTERNATE KITCHEN



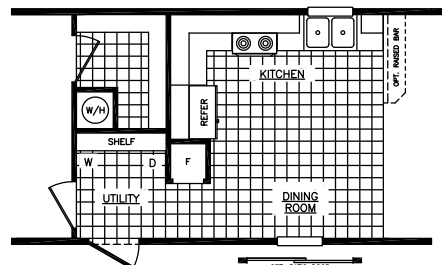
OPT. REVERSE AISLE

The *Riverview*

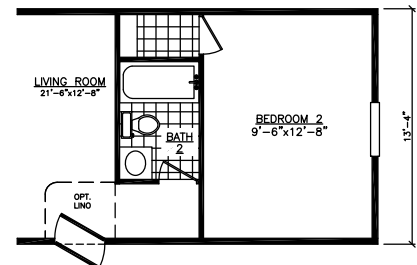
Model 2703D
3 Bedroom • 2 Bath • Floor Size 934 sq. ft.



OPT. GLAMOUR BATH



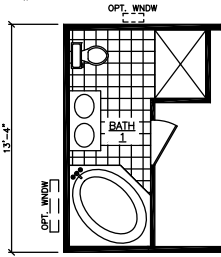
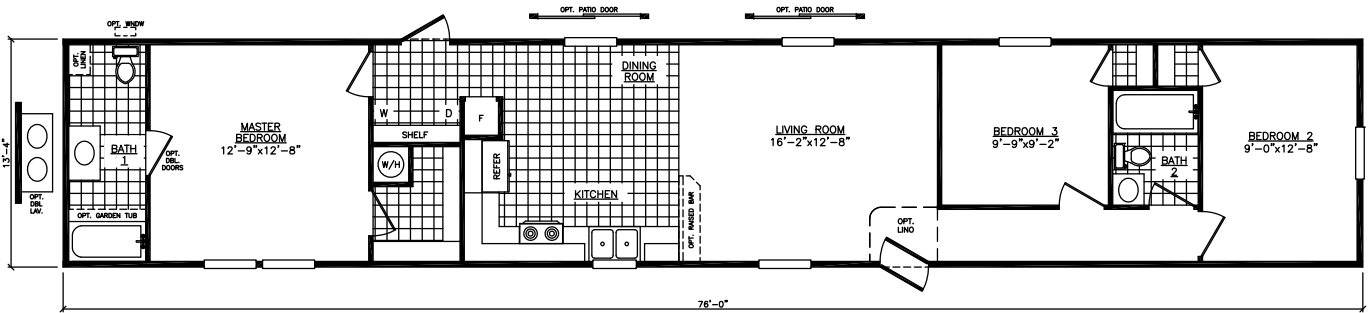
OPT. REVERSE AISLE



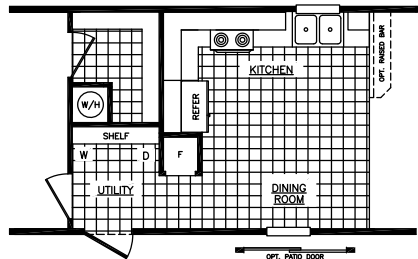
OPT. 2 BEDROOM

The Sterling

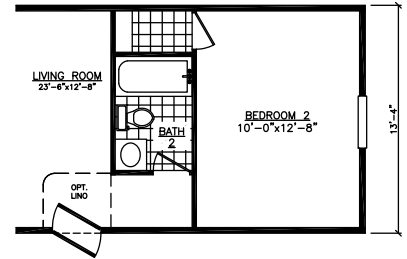
Model 2763D
3 Bedroom • 2 Bath • Floor Size 1,014 sq. ft.



OPT. GLAMOUR BATH



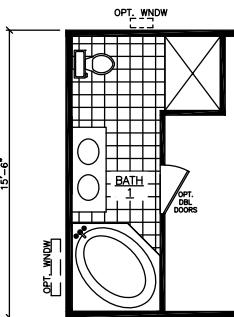
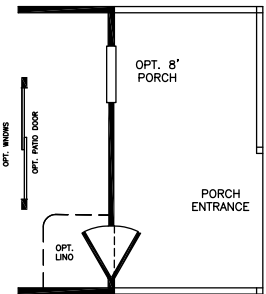
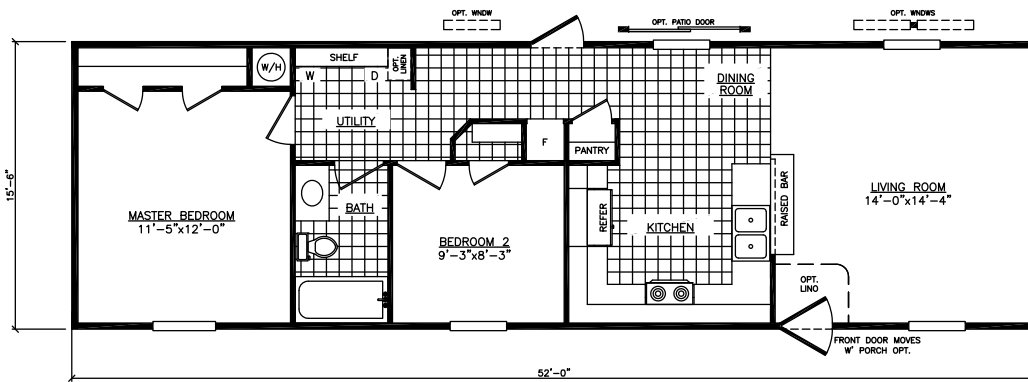
OPT. REVERSE AISLE



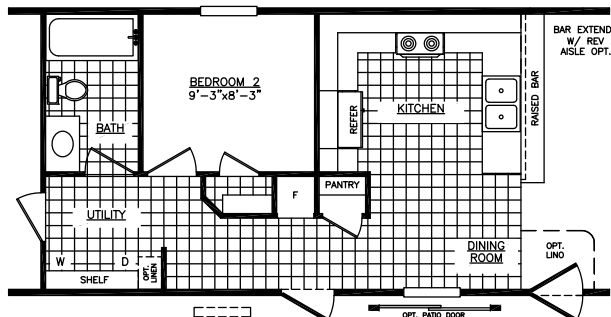
OPT. 2 BEDROOM

The Vista

Model 6522W
2 Bedroom • 1 Bath • Floor Size 806 sq. ft.



OPT. GLAMOUR BATH WITH OPT. 4' STRETCH (INCLUDES -1' LIVING ROOM)



OPT. REVERSE AISLE

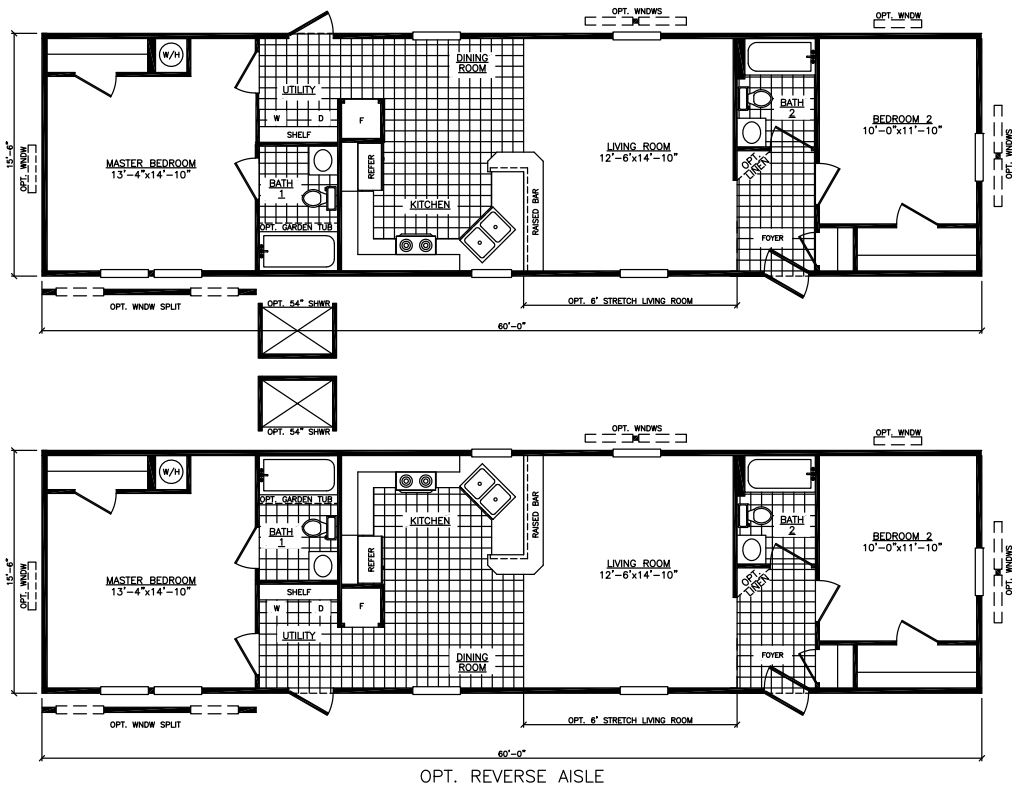
The Pikeville

Model 6562N
2 Bedroom • 2 Bath • Floor Size 868 sq. ft.



The Tippecanoe

Model 1660-2
2 Bedroom • 2 Bath • Floor Size 930 sq. ft.



The Conestoga

Model 6603U
3 Bedroom • 2 Bath • Floor Size 930 sq. ft.



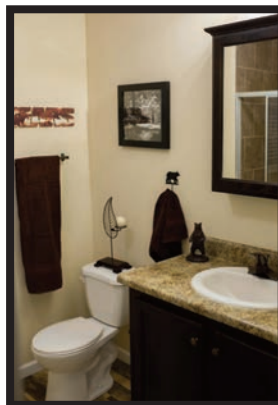
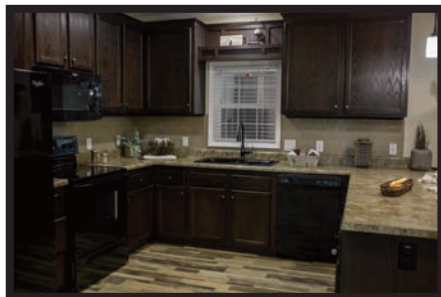
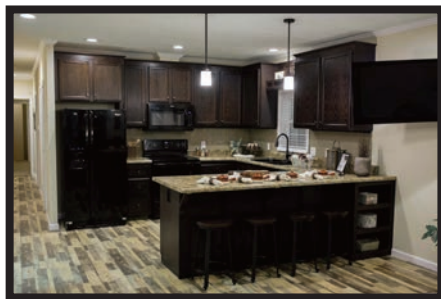
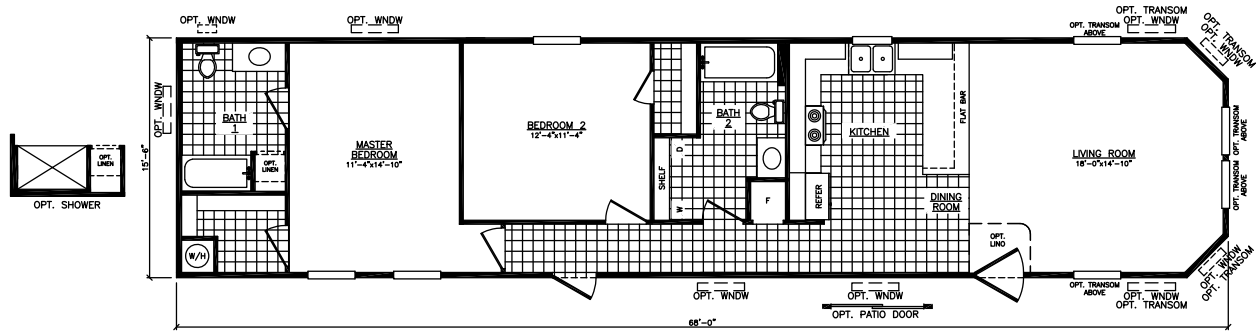
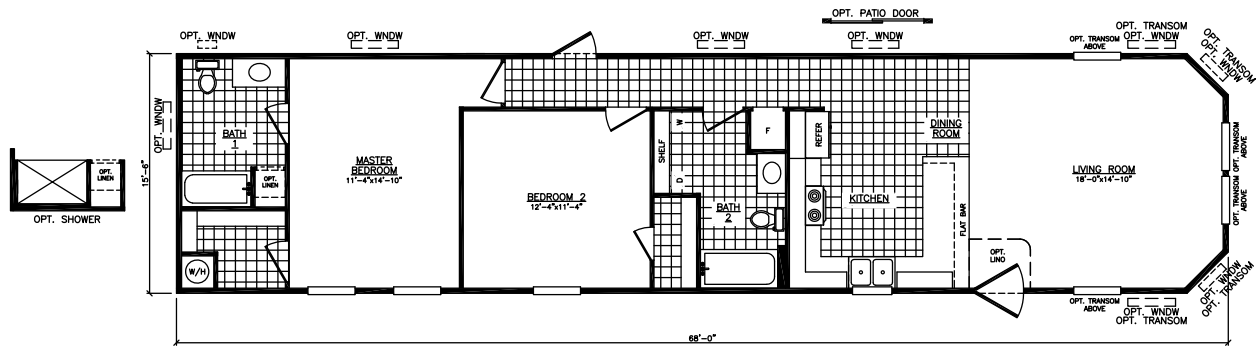
The Senoran

Model 6663X
3 Bedroom • 2 Bath • Floor Size 1,023 sq. ft.



The Hudson

Model 6682S
2 Bedroom • 2 Bath • Floor Size 1,054 sq. ft.



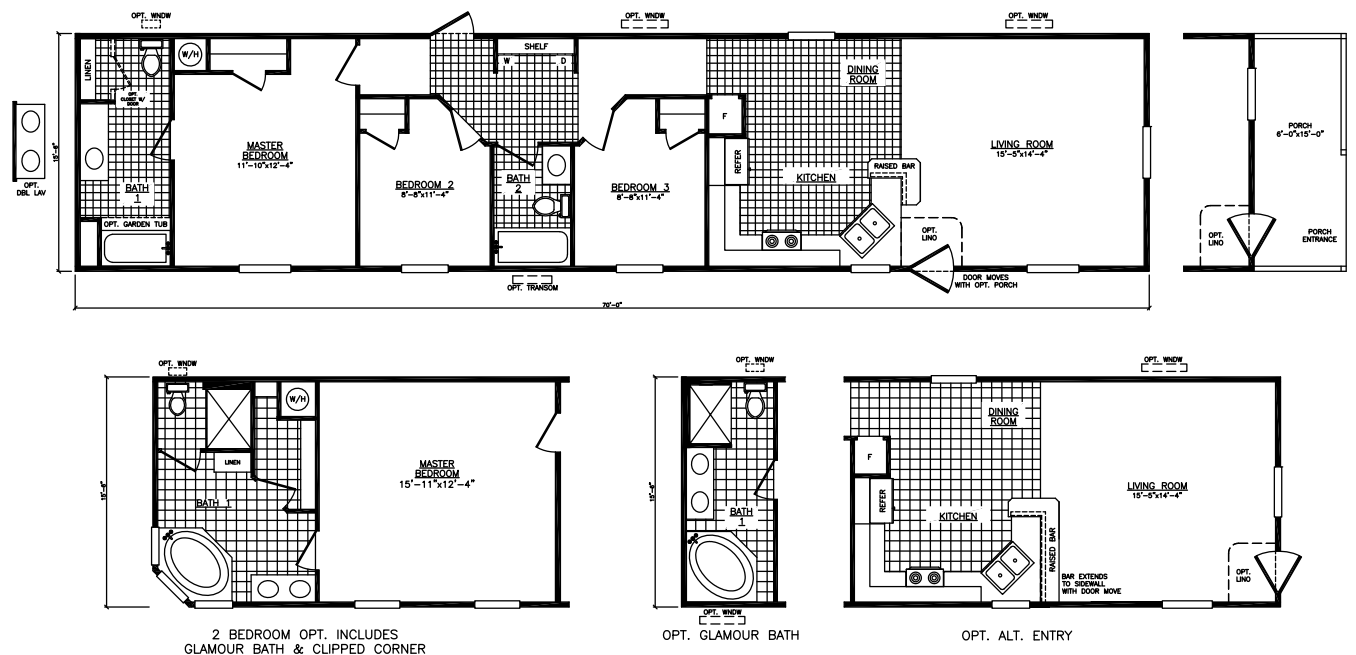
The *Sylvan*

Model 6683L
3 Bedroom • 2 Bath • Floor Size 1,054 sq. ft.



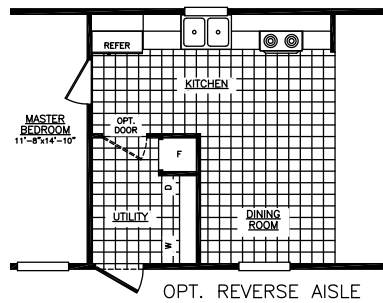
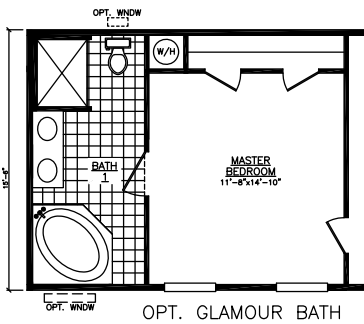
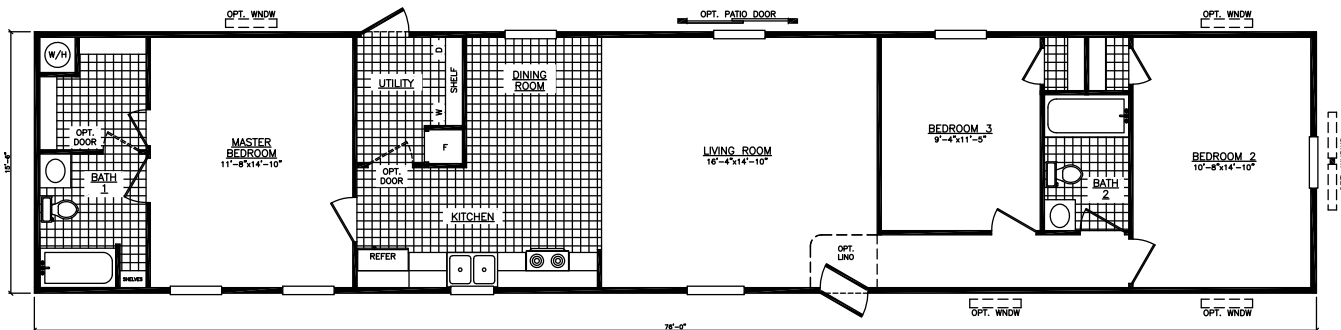
The *Winchester*

Model 6703F
3 Bedroom • 2 Bath • Floor Size 1,085 sq. ft.



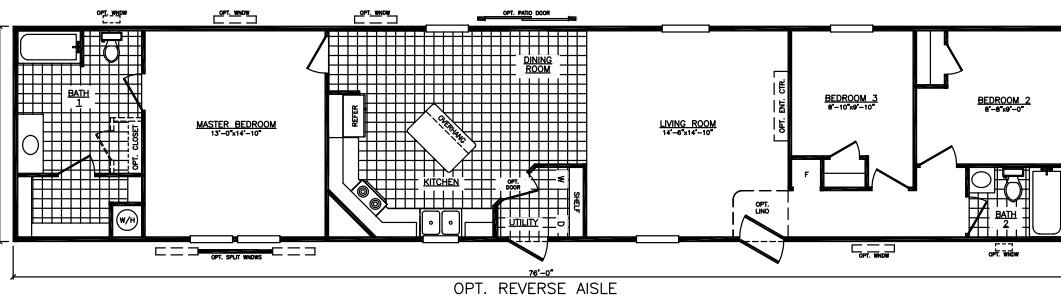
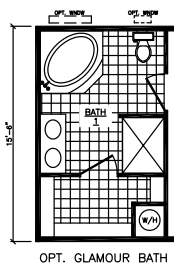
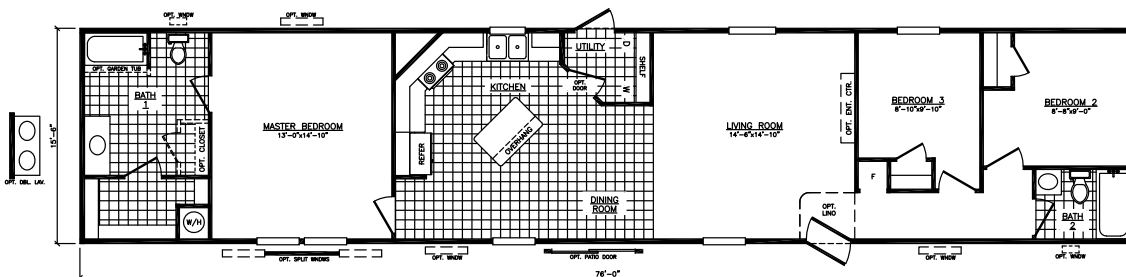
The *Melody*

Model 6763B
3 Bedroom • 2 Bath • Floor Size 1,178 sq. ft.



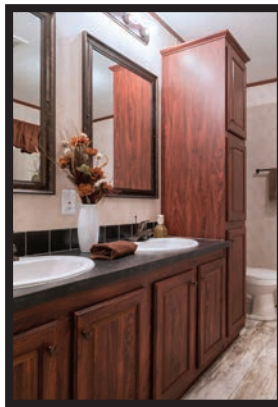
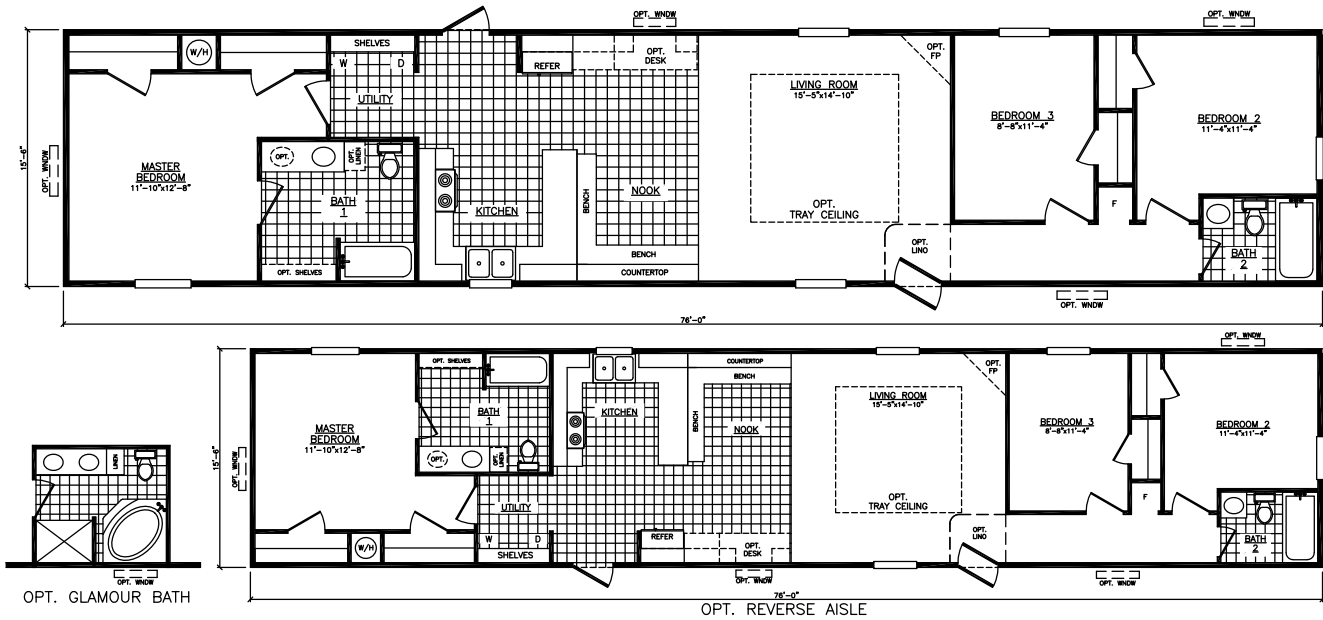
The *Phoenix*

Model 6763H
3 Bedroom • 2 Bath • Floor Size 1,178 sq. ft.



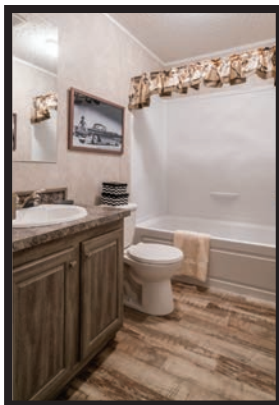
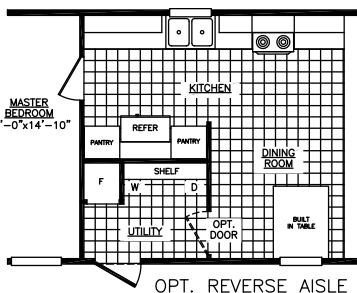
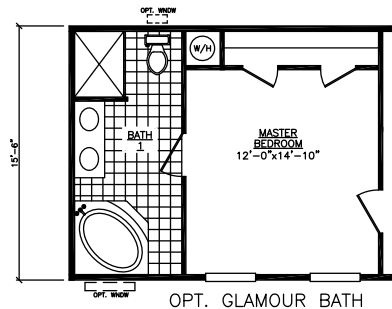
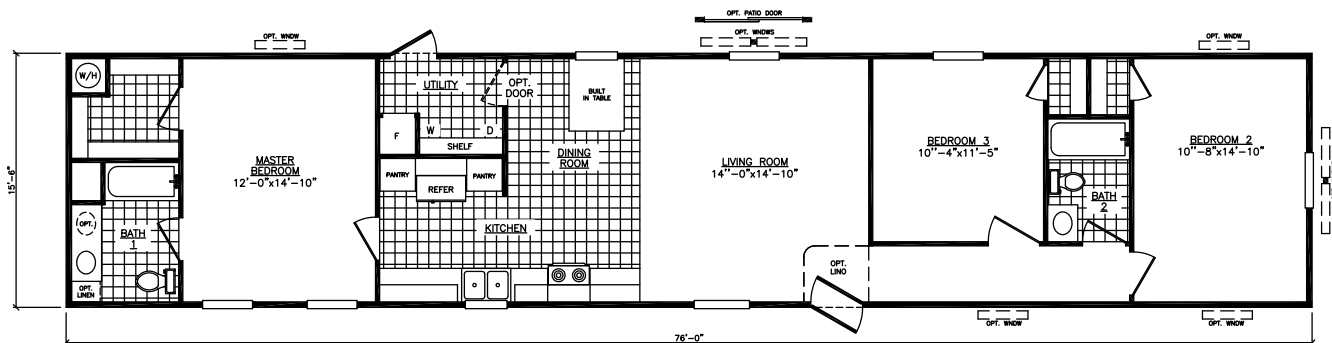
The Biscayne

Model 6763G
3 Bedroom • 2 Bath • Floor Size 1,178 sq. ft.



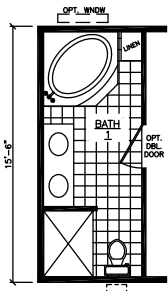
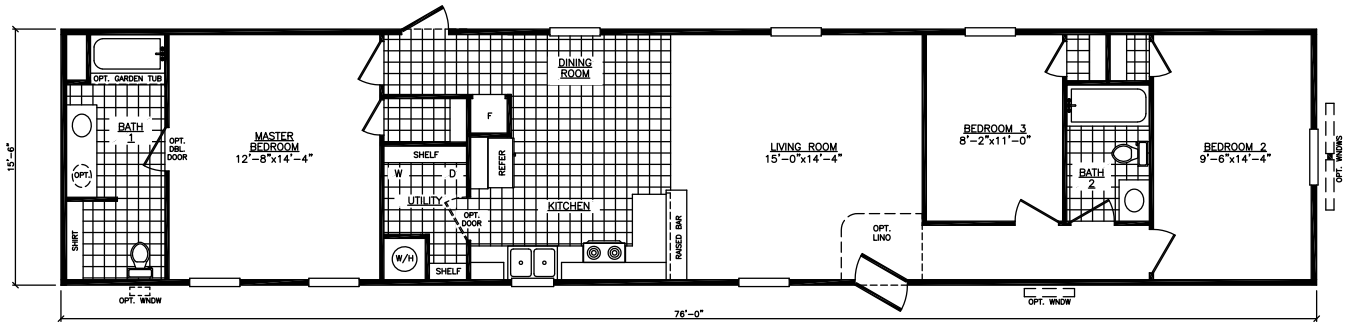
The Convoy

Model 6763R
3 Bedroom • 2 Bath • Floor Size 1,178 sq. ft.

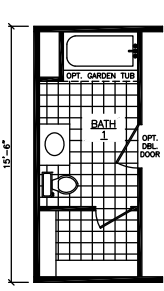


The *Independence*

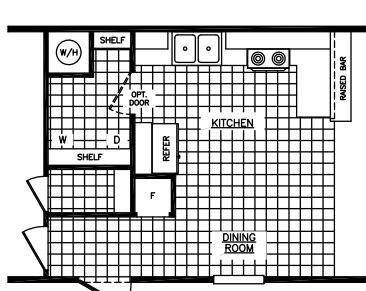
Model 6763X
3 Bedroom • 2 Bath • Floor Size 1,178 sq. ft.



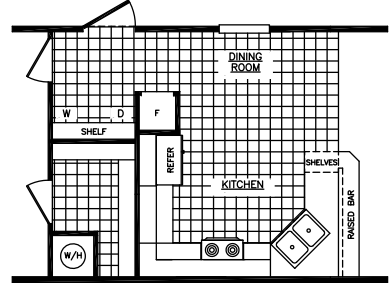
OPT. GLAM BATH



ALT. BATH WITH CLOSET



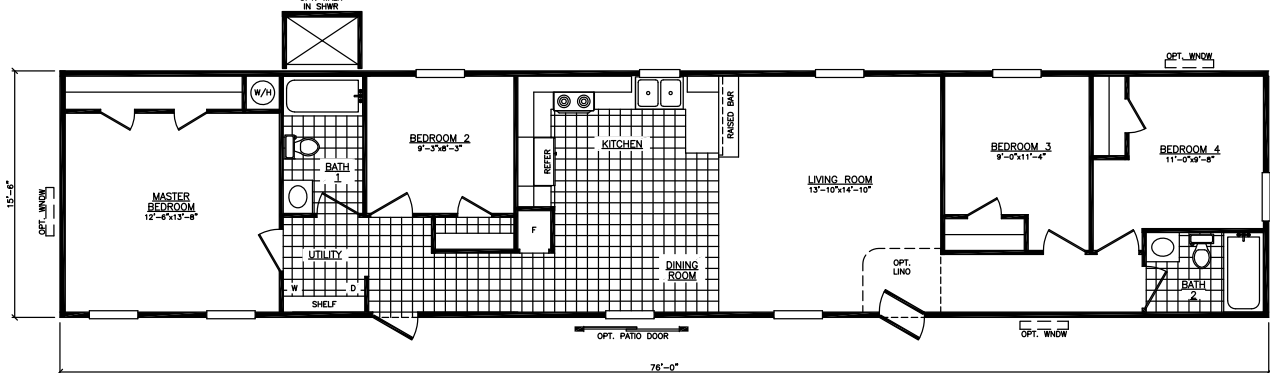
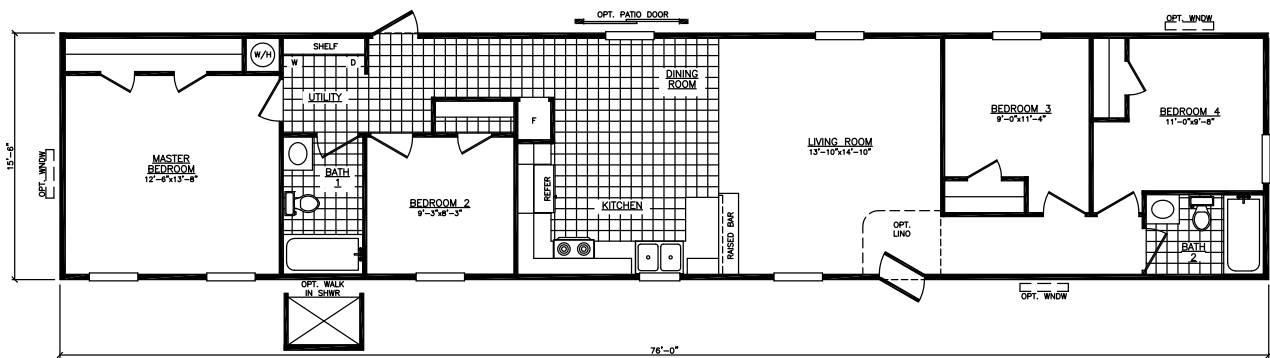
OPT. REVERSE AISLE



OPT. ALT. KITCHEN

The *Roosevelt*

Model 6764X
4 Bedroom • 2 Bath • Floor Size 1,178 sq. ft.



OPT. REVERSE AISLE

Mojave Series

Standard Features

Exterior Standards

Thermal Zone III Construction

Nominal 3/12 Roof Pitch

R-28-11-11 Insulation

(Additional Windows & Doors May Require Higher Insulation Values)

Vinyl Siding by "Georgia Pacific"

1/4" Backer Board Wrap under Vinyl Siding

25 year Fiberglass Shingles by "Certainteed"

7/16" OSB Roof Sheathing

Dead Bolt Locks at Front and Rear (Keyed Alike)

Vinyl Single Hung Windows w/ Grids

Foam All Exterior Windows

38"x 82" R.O. Front Door w/ Storm

34"x 82" R.O. Blank Outswing Rear Door (No Storm)

2x6 Floor Joists 16" O.C. (14' & 28' Wides)

2x8 Floor Joists 16" O.C. (16' & 32' Wides)

20 LB Roof Load

2x4 Exterior Walls 16" O.C.

OSB Floor Decking

12" Raised Panel Shutters at FDS Only (Sectionals)

12" Raised Panel Shutters at FDS & Hitch (Singles)

Light Fixtures at All Exterior Doors

Full Length Chassis w/ Outriggers 96" O.C.

99.5" I-Beam Spread, Detachable Hitch

Interior Standards

Customer Choice Decor Selections

2" Plastic Mini-Blinds Throughout

Door Stop All 3 Sides

94" Flat Ceilings

Blown Textured Ceiling

Vinyl Wall Panels Throughout

Flat Wrapped Moldings Throughout

16oz. Plush Carpet by "Shaw"

3/8" Rebond Carpet Pad

Vinyl Flooring by "Congoleum"

Wire Closet Shelving by "Closet Maid"

6 Panel White Interior Doors Throughout

3 Hinge Interior Doors

Electrical, Plumbing, & Heating

Smoke Detectors in Main Living Areas &

All Bedrooms

200 AMP Service, Electric Furnace

40 Gallon Electric Water Heater

Exterior Electrical Receptacle (FDS)

Copper Wiring, PEX Plumbing

Conventional Receptacles & Switches

Whole House Shut-off Valve near Water Heater

Water Shut-off Valves (All Sinks & Commodes)

Metal Heat Ducts

GFI Receptacles in Kitchen and Baths

Bedroom Ceiling Lights Throughout

Plumb & Wire for Washer & Dryer

Utility Shelf above Washer & Dryer

Kitchen Standards

"Whirlpool" Electric Coil Top Range (White)

"Whirlpool" 18cf Refrigerator (White)

30" Power Range Hood

30" Overhead Cabinets w/ Fixed Center Shelves

Raised Panel MDF Wrapped Cabinet Doors & Stiles

Concealed Cabinet Door Hinges

(1) Bank of Drawers w/ Residential Rails & Guides

Laminated Countertops

Stainless Steel Kitchen Sink

Shelf over Range & Refrigerator

Bath Standards

Tub Shower w/ Surround w/ Anti-Scald Single

Lever Faucet in Bathroom(s)

Garden Tub w/ Surround (Master Bath - Sectionals)

Laminated Countertops

Mirror above Each Bathroom Sink

Power Exhaust Fans in All Baths

China "Water Saver" Commodes Both Baths

White Plastic Sink(s) w/ Dual Knob Faucets

Because of continuous product improvements, specifications are subject to change without notice or obligation

ADVENTURE HOMES, LLC

www.AdventureHomes.net

1119 Fuller Drive, Garrett, IN 46738

877-510-1955



January
2021