

2021



Mojave Series

Homes

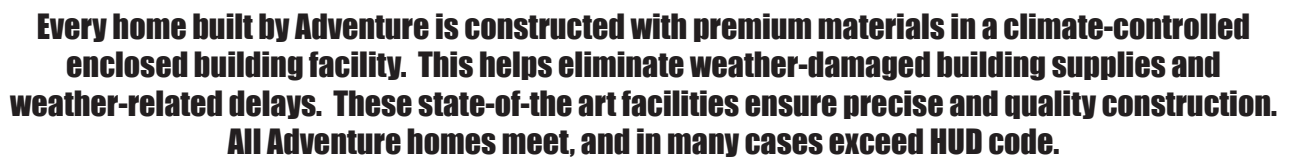
Sectional



Luxury and Comfort for Less

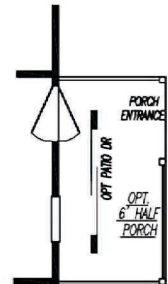
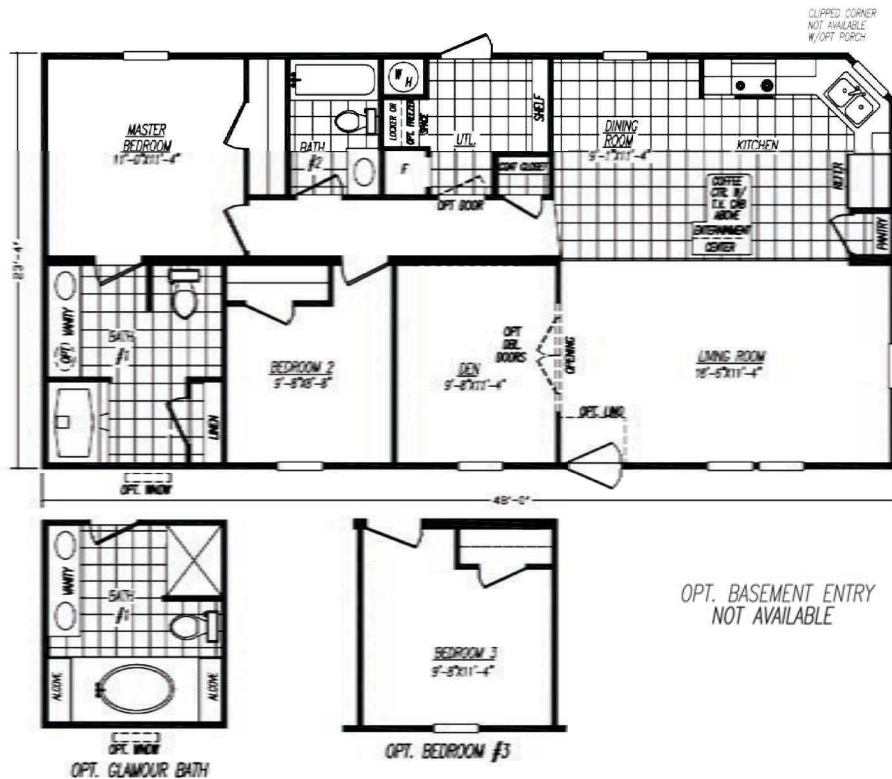
Your Adventure begins here.

The Expedition **Model 3403S**
3 Bedroom • 2 Bath • Floor Size 934 sq. ft.



The White Water

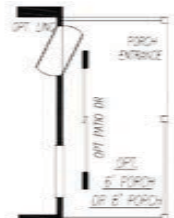
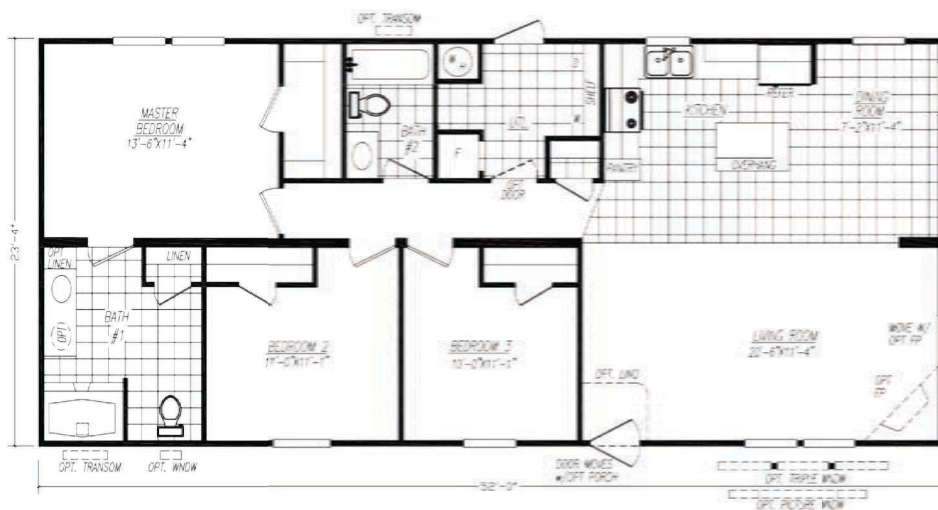
Model 3482S
2 Bedroom • 2 Bath • Floor Size 1,120 sq. ft.



OPT. BASEMENT ENTRY NOT AVAILABLE

The Crusade

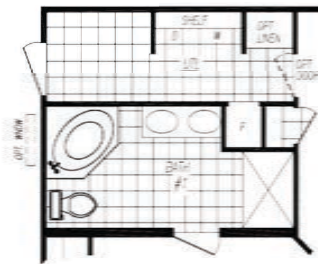
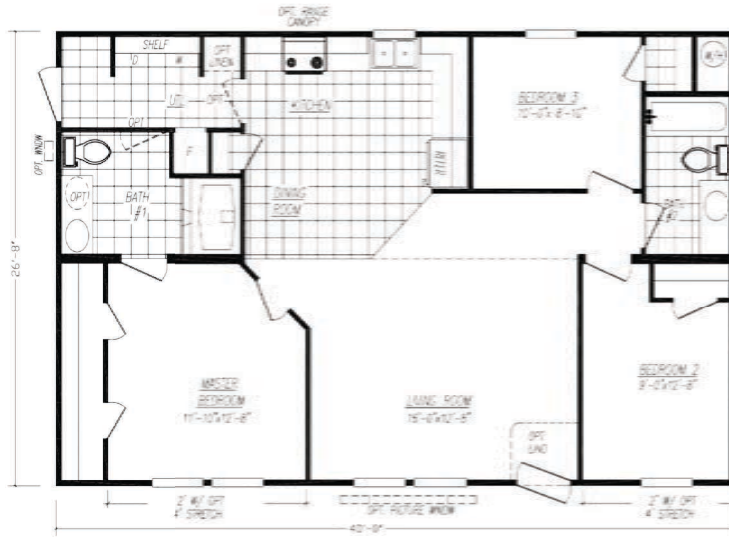
Model 3523F
3 Bedroom • 2 Bath • Floor Size 1,213 sq. ft.



OPT. BASEMENT ENTRY NOT AVAILABLE

The Portage

Model 4403C
3 Bedroom • 2 Bath • Floor Size 1,067 sq. ft.

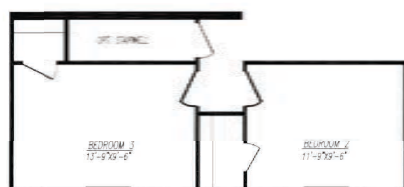
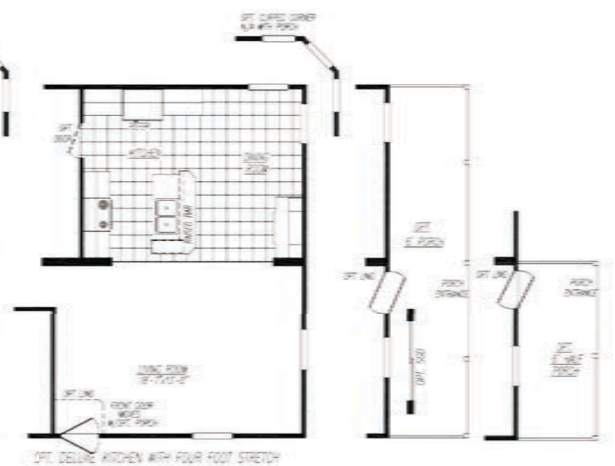


*OPT. GLAM BATH
 ONLY AVAILABLE WITH 4' STRETCH
 IN MASTER BATH & M-BDRM*

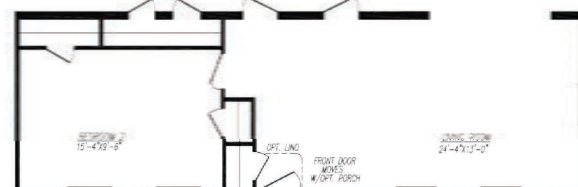
*OPT. BASEMENT ENTRY
 NOT AVAILABLE*

The Pioneer

Model 4423S
3 Bedroom • 2 Bath • Floor Size 1,120 sq. ft.



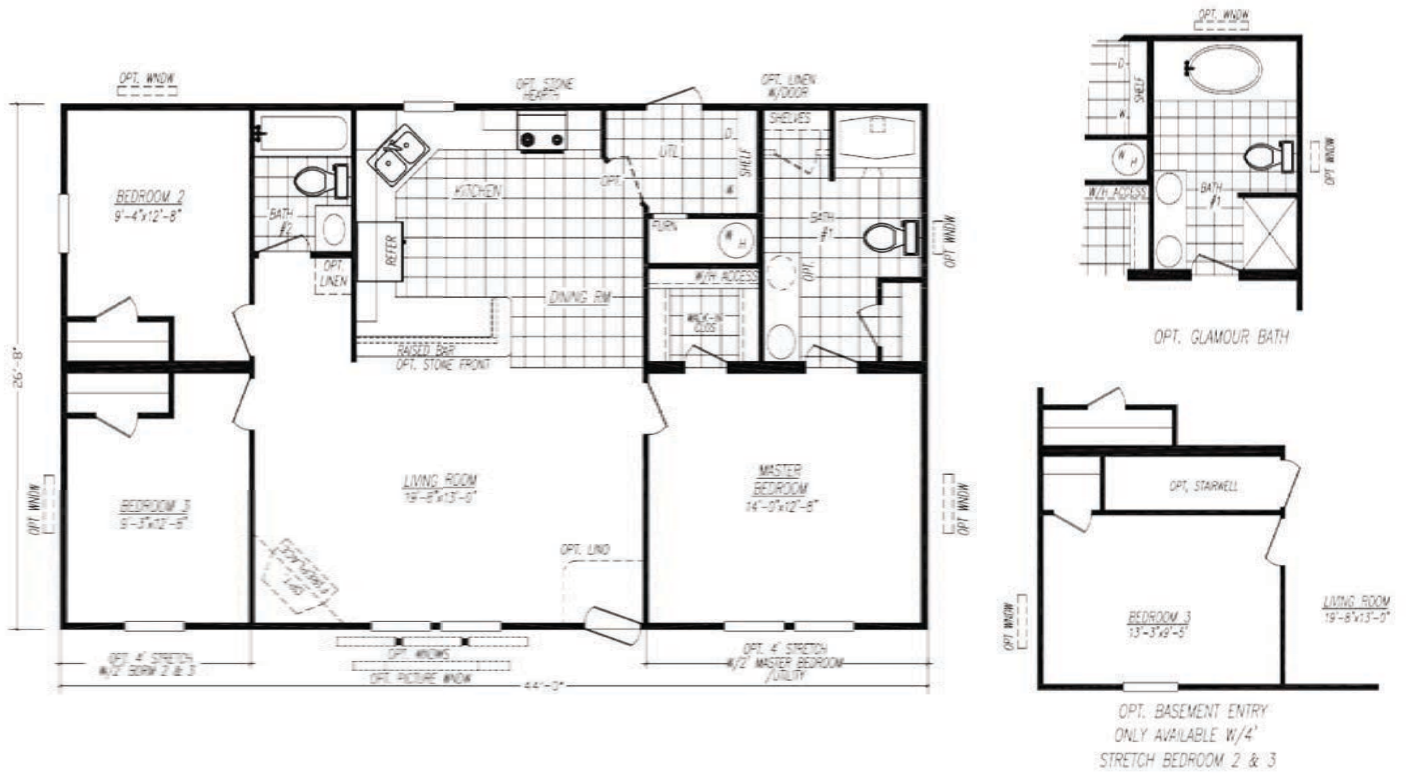
OPT. BASEMENT ENTRY (REQUIRES FOUR FOOT STRETCH & INCLUDES DELUXE KITCHEN)



OPT. 2 BEDROOM

The *Kankakee*

Model 2844-1
3 Bedroom • 2 Bath • Floor Size 1,173 sq. ft.



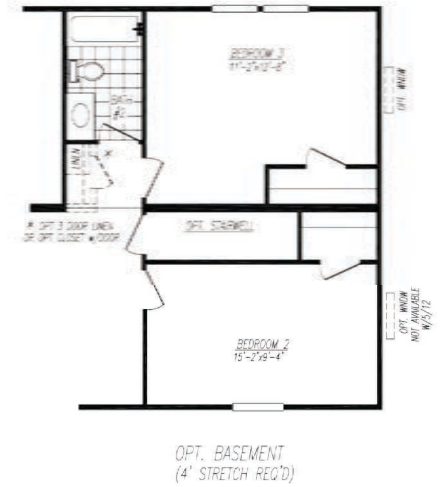
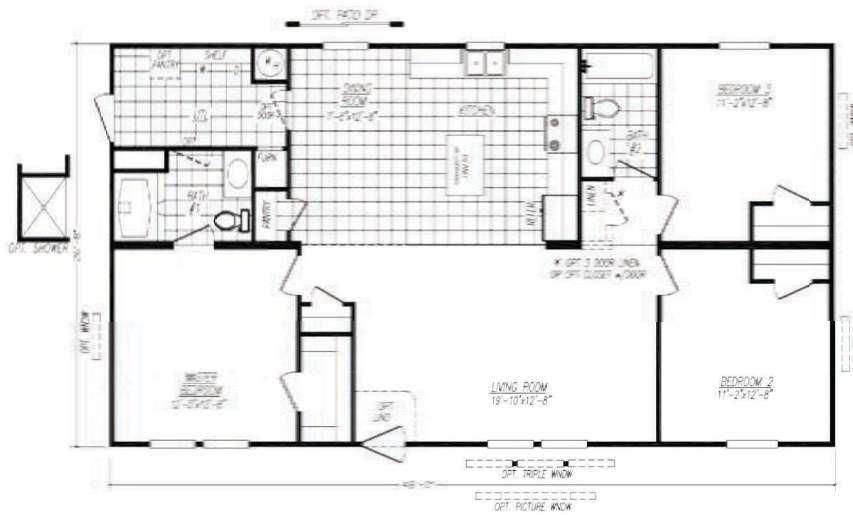
The Ozark

Model 4443U
3 Bedroom • 2 Bath • Floor Size 1,173 sq. ft.



The *Woodland*

Model 4483M
3 Bedroom • 2 Bath • Floor Size 1,280 sq. ft.



The Coronado

Model 4483S
3 Bedroom • 2 Bath • Floor Size 1,280 sq. ft.



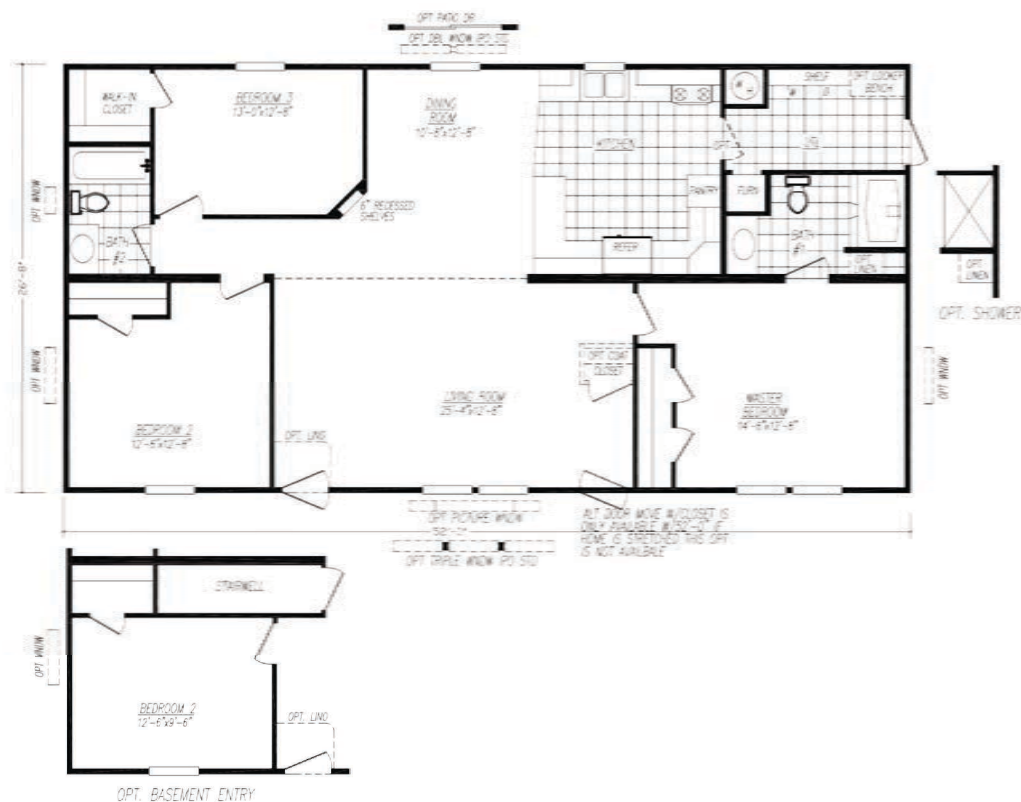
The *Southeastern*

Model 2852-1
3 Bedroom • 2 Bath • Floor Size 1,387 sq. ft.



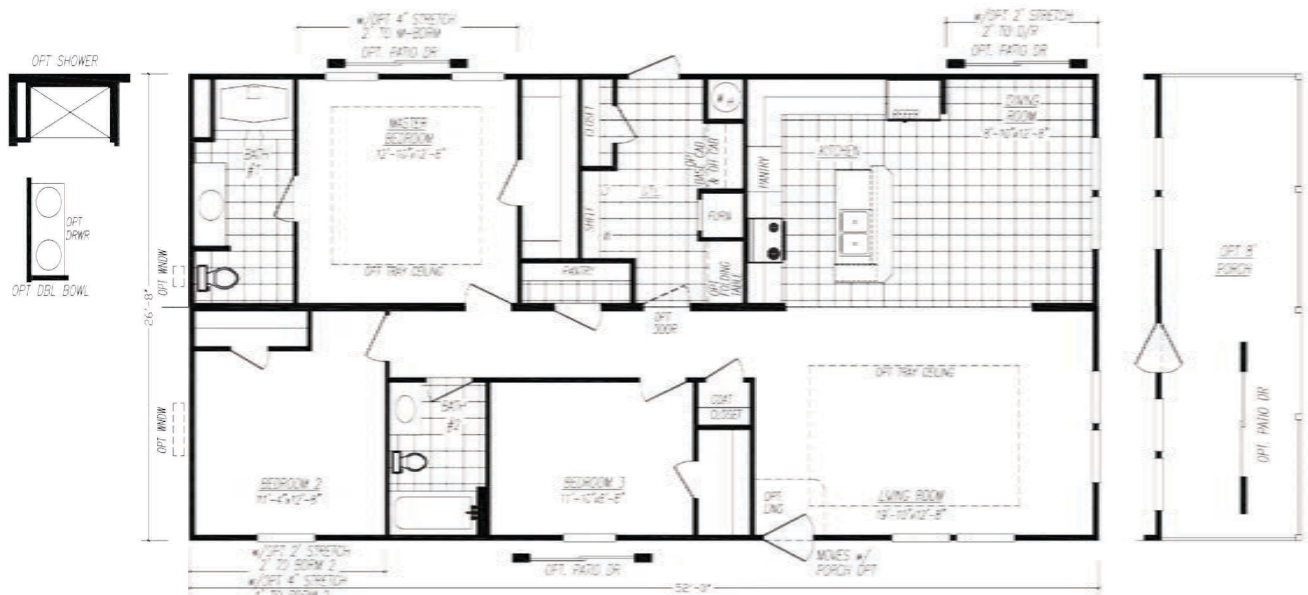
The *Waterloo*

Model 4523C
3 Bedroom • 2 Bath • Floor Size 1,387 sq. ft.



The Pinecrest

Model 4523R
3 Bedroom • 2 Bath • Floor Size 1,387 sq. ft.



OPT. BASEMENT ENTRY
 NOT AVAILABLE

The Blue Ridge

Model 4523U
3 Bedroom • 2 Bath • Floor Size 1,387 sq. ft.



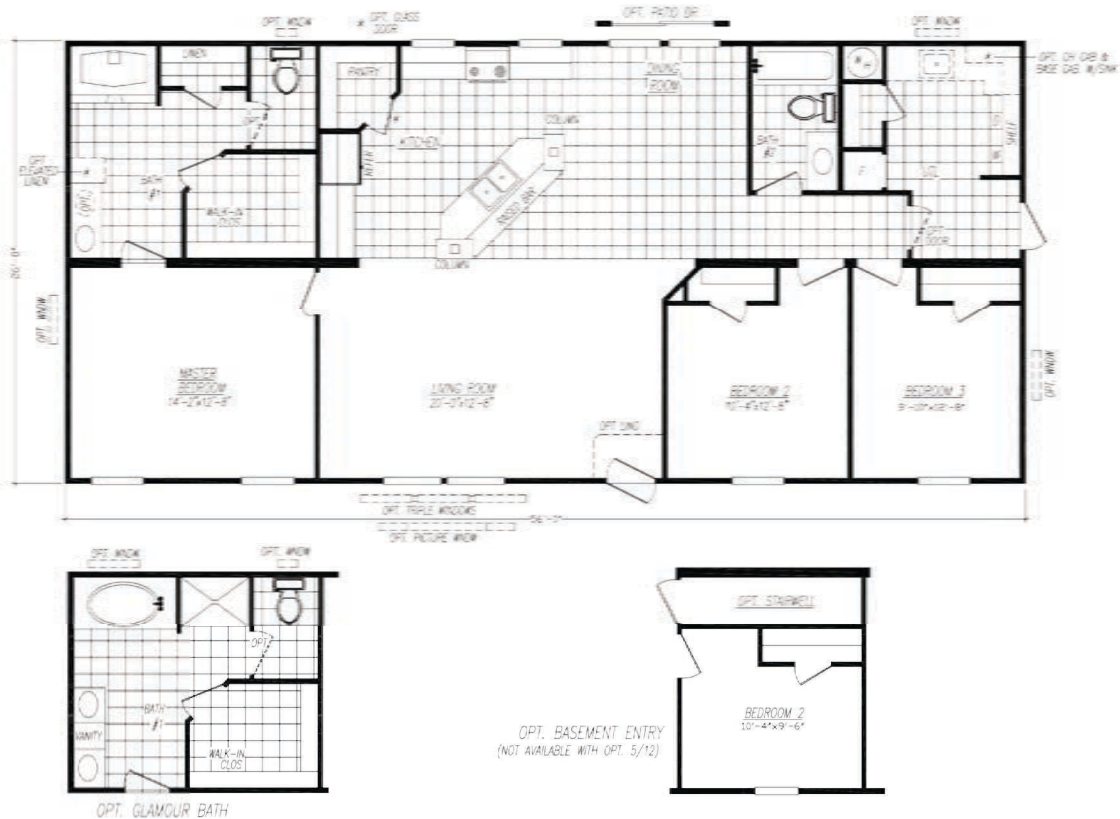
OPT. 4TH BEDROOM REQUIRES 2" STRETCH
 AND CHANGES MASTER BEDROOM CLOSET

OPT. GLAMOUR BATH

OPT. BASEMENT ENTRY

The Great Plains

Model 2856-1
3 Bedroom • 2 Bath • Floor Size 1,494 sq. ft.



The Zenith

Model 4563N
3 Bedroom • 2 Bath • Floor Size 1,494 sq. ft.



The Rockford

Model 4563Z
3 Bedroom • 2 Bath • Floor Size 1,494 sq. ft.



The Palisade

Model 4603C
3 Bedroom • 2 Bath • Floor Size 1,600 sq. ft.



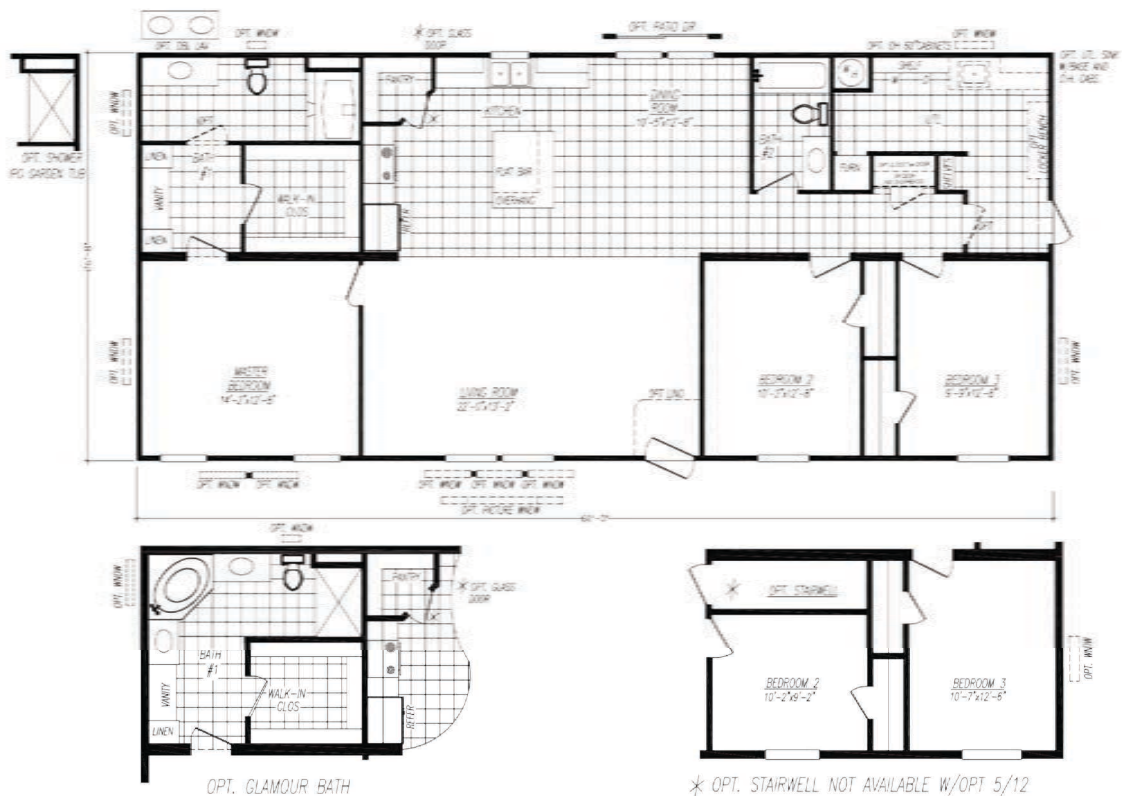
The Homestead

Model 4603CD
3 Bedroom • 2 Bath • Floor Size 1,600 sq. ft.



The Colorado

Model 4603GT
3 Bedroom • 2 Bath • Floor Size 1,600 sq. ft.



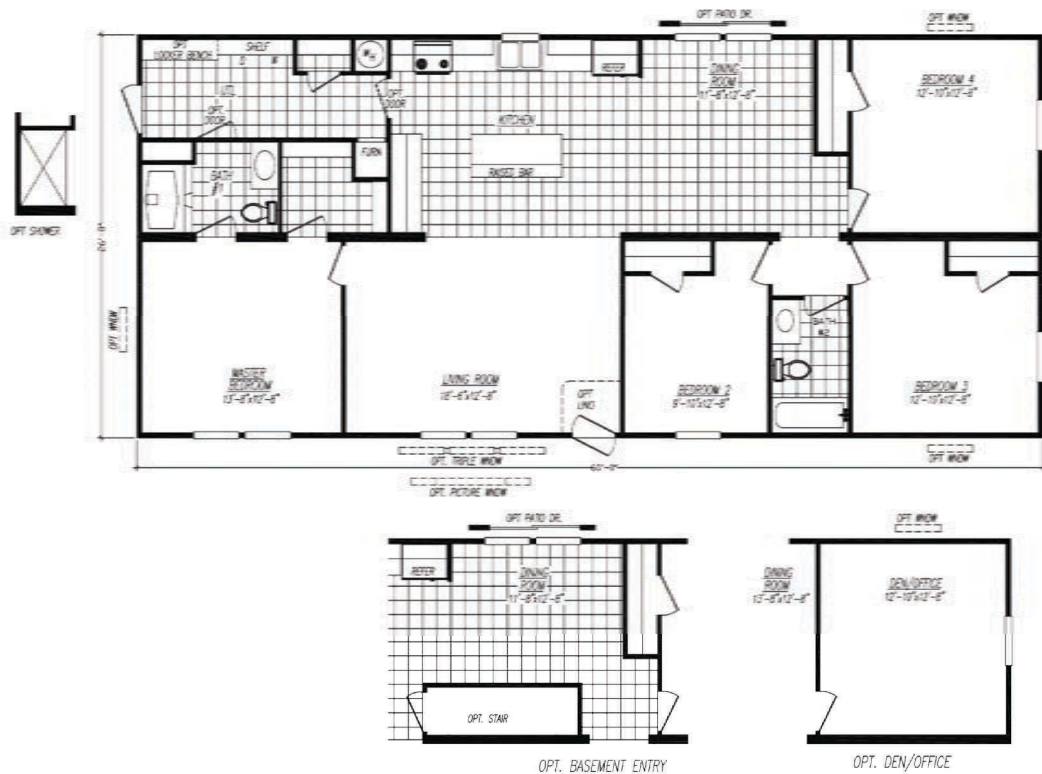
The Voyager

Model 4603S
3 Bedroom • 2 Bath • Floor Size 1,600 sq. ft.



The Summitt

Model 4604A
4 Bedroom • 2 Bath • Floor Size 1,600 sq. ft.



The Forestville

Model 4623D
3 Bedroom • 2 Bath • Floor Size 1,653 sq. ft.



The Acadia

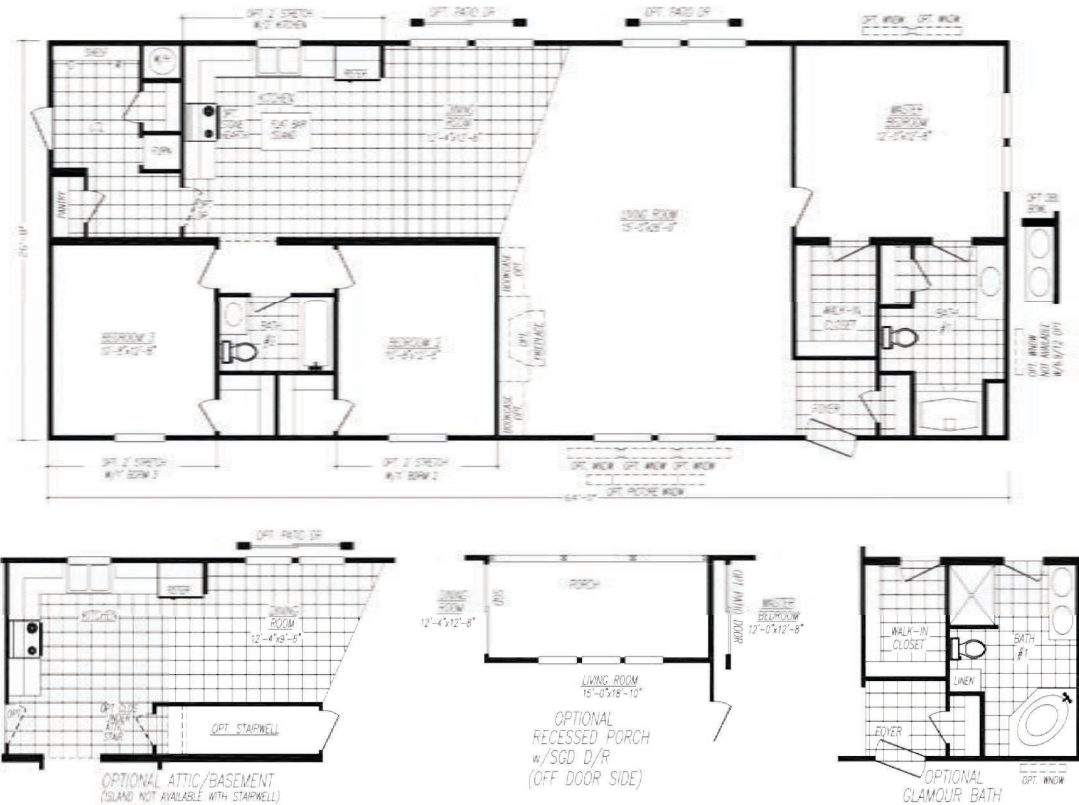
Model 4643A
3 Bedroom • 2 Bath • Floor Size 1,707 sq. ft.



The *Waldon*

Model 4643P

3 Bedroom • 2 Bath • Floor Size 1,707 sq. ft.



The Boone

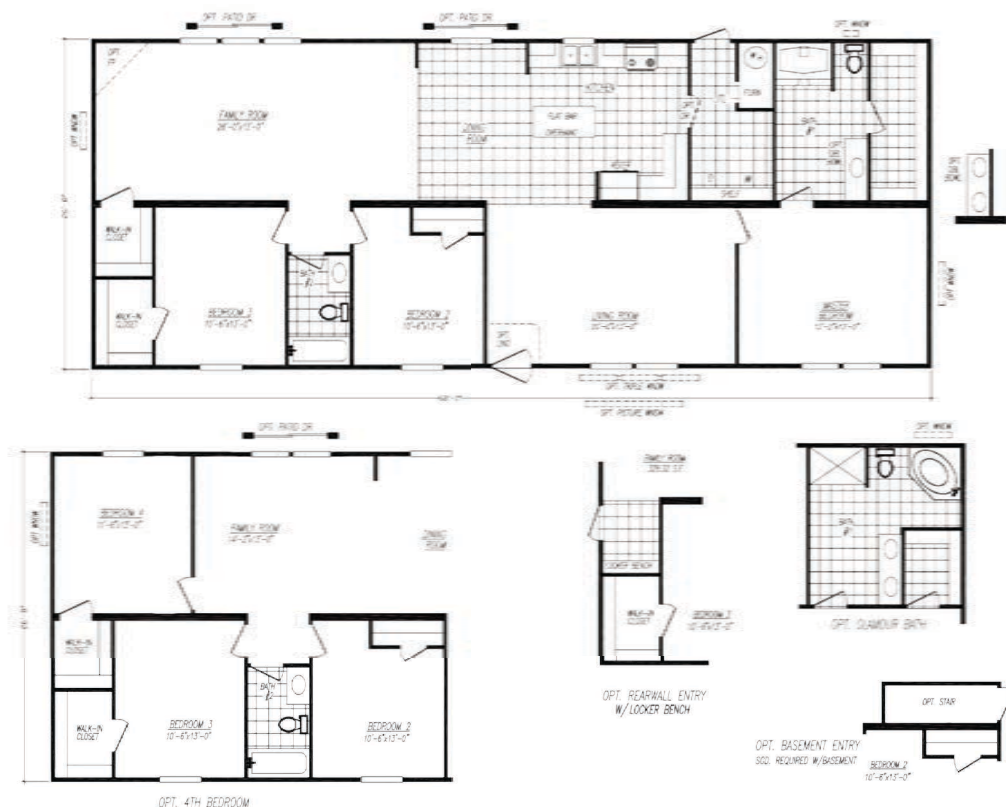
Model 4683B

3 Bedroom • 2 Bath • Floor Size 1,813 sq. ft.



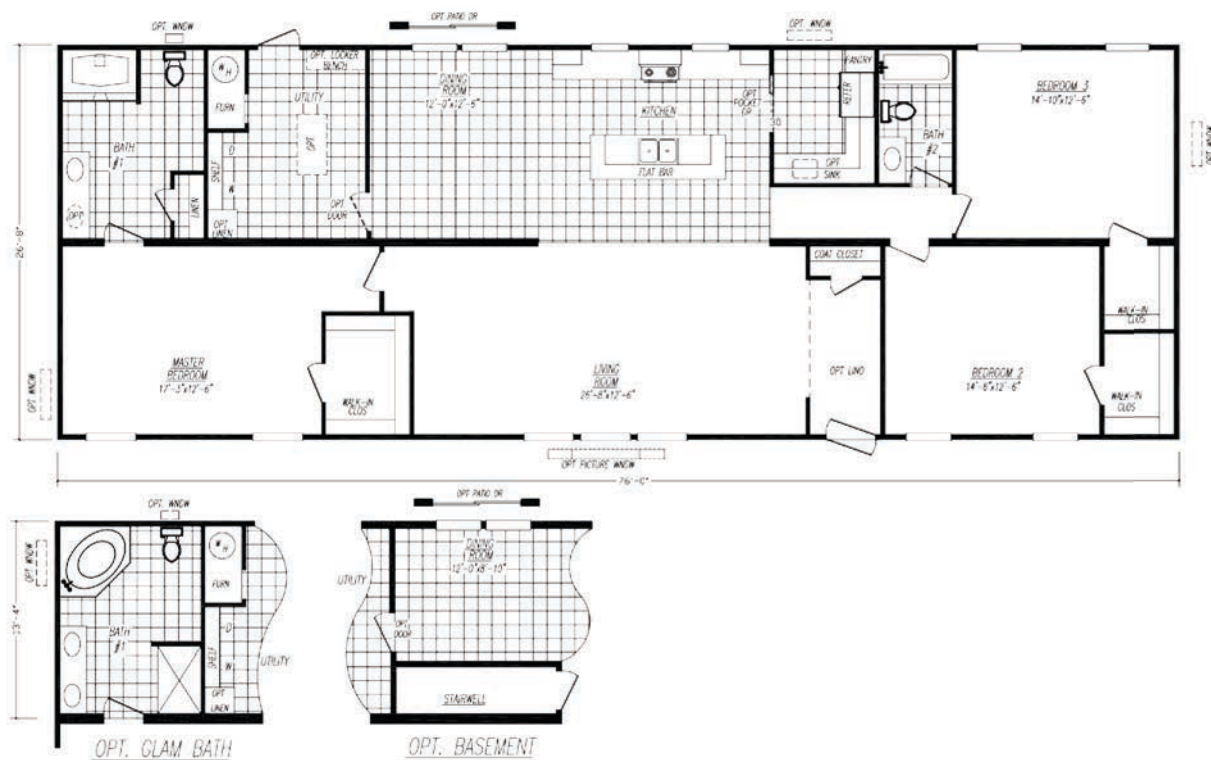
The Endeavor

Model 4683M
3 Bedroom • 2 Bath • Floor Size 1,813 sq. ft.



The Journey

Model 4763N
3 Bedroom • 2 Bath • Floor Size 2,027 sq. ft.



The Pines

Model 4764K
4 Bedroom • 2 Bath • Floor Size 2,027 sq. ft.



The Enterprise

Model 0523H
3 Bedroom • 2 Bath • Floor Size 1,560 sq. ft.



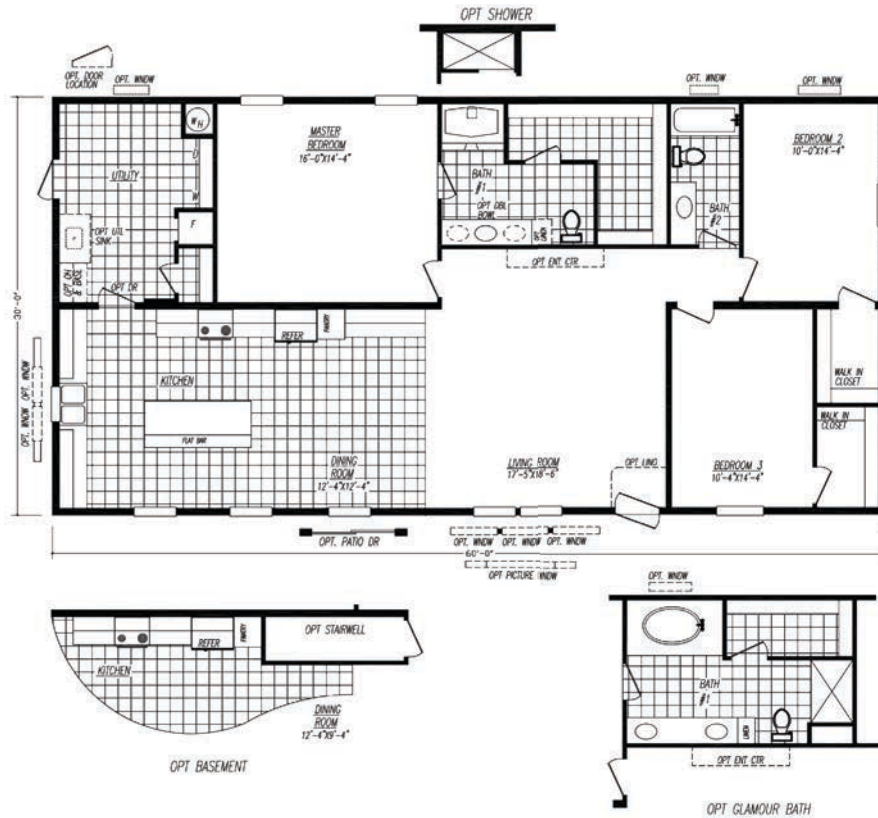
The Aztec

Model 0563S
3 Bedroom • 2 Bath • Floor Size 1,680 sq. ft.



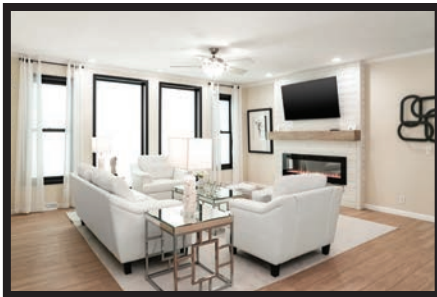
The Titan

Model 0603K
3 Bedroom • 2 Bath • Floor Size 1,800 sq. ft.



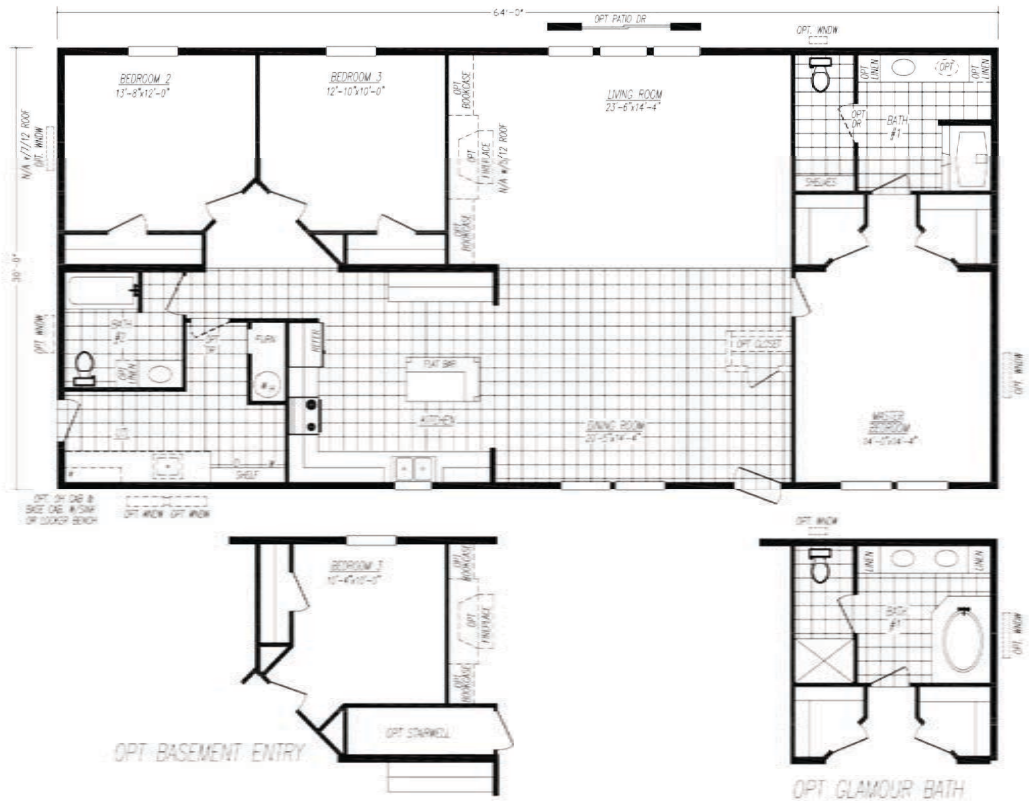
The Cambridge

Model 0643FF
3 Bedroom • 2 Bath • Floor Size 1,920 sq. ft.



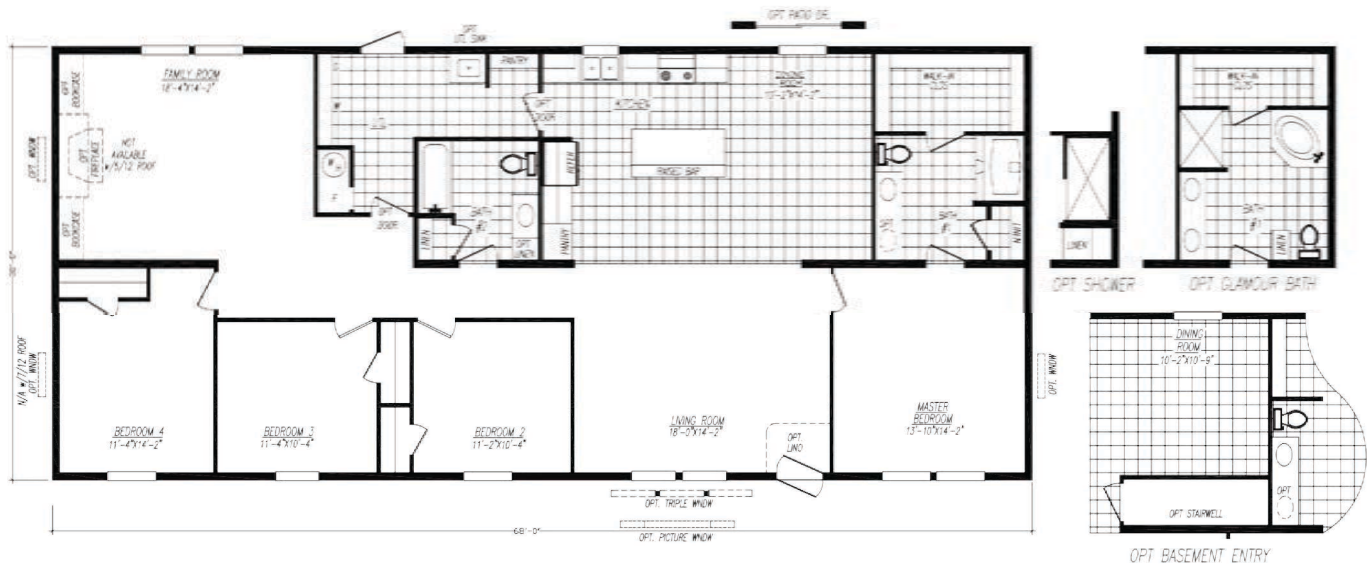
The Red Rock

Model 0643T
3 Bedroom • 2 Bath • Floor Size 1,920 sq. ft.



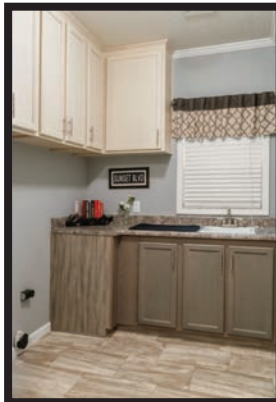
The *Graylock*

Model 0684F
4 Bedroom • 2 Bath • Floor Size 2,040 sq. ft.



The Mohican **Model 0763C**
3 Bedroom • 2 Bath • Floor Size 2,280 sq. ft.

The Mohican **Model 0763C**
3 Bedroom • 2 Bath • Floor Size 2,280 sq. ft.



The Green Valley

Model 0763E
3 Bedroom • 2 Bath • Floor Size 2,280 sq. ft.



The Stone Mountain

Model 0764L
4 Bedroom • 2 Bath • Floor Size 2,280 sq. ft.

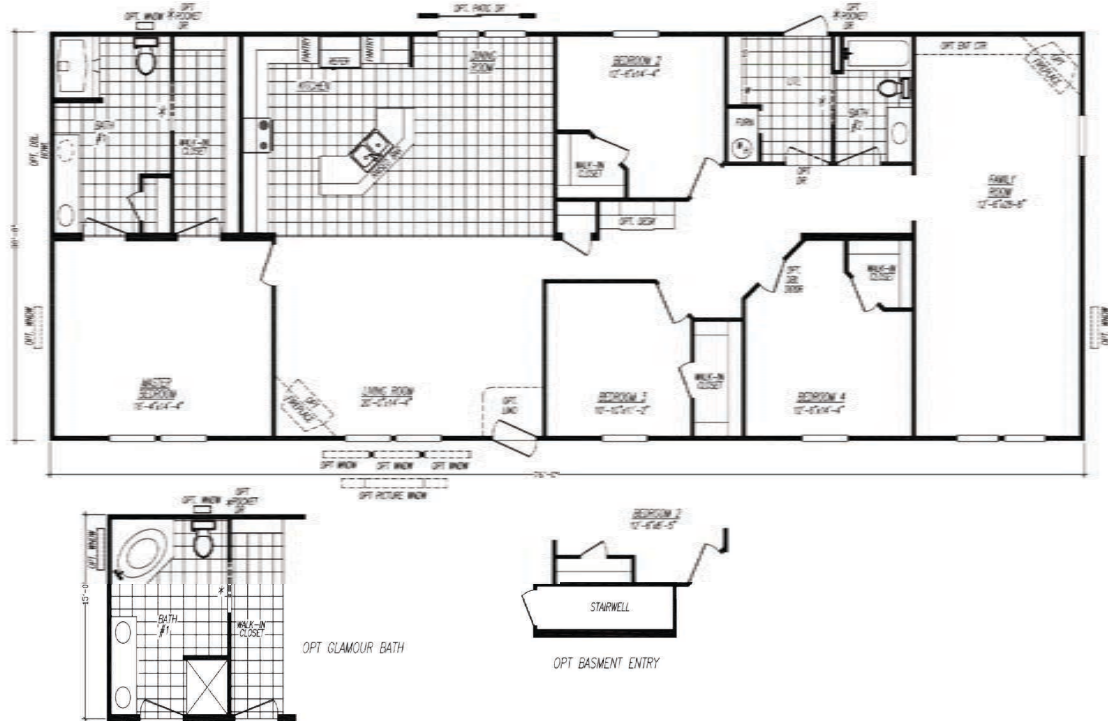


The Monument **Model 0764R**
4 Bedroom • 2 Bath • Floor Size 2,280 sq. ft.

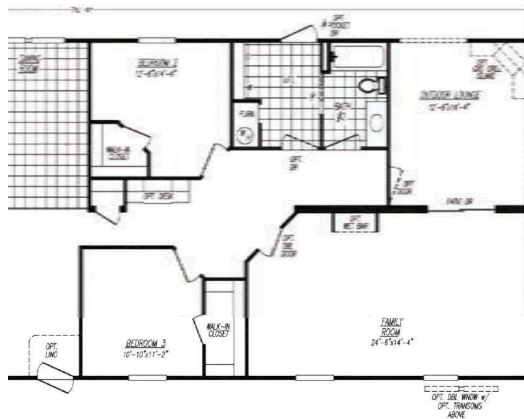
The Monument **Model 0764R**
4 Bedroom • 2 Bath • Floor Size 2,280 sq. ft.

The Monument **Model 0764R**
4 Bedroom • 2 Bath • Floor Size 2,280 sq. ft.

Standard - 4 Bed w/ Vertical Family Room



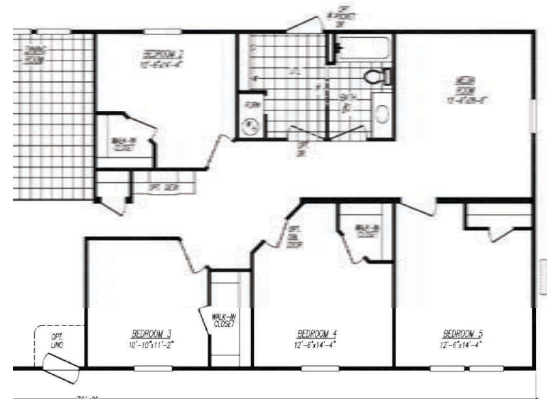
3 Bed with Outdoor Lounge



4 Bed with Horizontal Family Room



5 Bed with Media Room



Model 0764S
4 Bedroom • 2 Bath • Floor Size 2,280 sq. ft.

Model 0764S

4 Bedroom • 2 Bath • Floor Size 2,280 sq. ft.



Model 0765M
5 Bedroom • 3 Bath • Floor Size 2,280 sq. ft.

Model 0765M

5 Bedroom • 3 Bath • Floor Size 2,280 sq. ft.



Mojave Series

Standard Features

Exterior Standards

Thermal Zone III Construction

Nominal 3/12 Roof Pitch

R-28-11-11 Insulation

(Additional Windows & Doors May Require Higher Insulation Values)

1/4" Backer Board Wrap under Vinyl Siding

25 year Fiberglass Shingles by "Certainteed"

7/16" OSB Roof Sheathing

Dead Bolt Locks at Front and Rear (Keyed Alike)

Vinyl Single Hung Windows w/ Grids

Foam All Exterior Windows

38"x 82" R.O. Front Door w/ Storm

34"x 82" R.O. Blank Outswing Rear Door (No Storm)

2x6 Floor Joists 16" O.C. (14' & 28' Wides)

2x8 Floor Joists 16" O.C. (16' & 32' Wides)

20 LB Roof Load

2x4 Exterior Walls 16" O.C.

OSB Floor Decking

12" Raised Panel Shutters at FDS Only (Sectionals)

12" Raised Panel Shutters at FDS & Hitch (Singles)

Light Fixtures at All Exterior Doors

Full Length Chassis w/ Outriggers 96" O.C.

99.5" I-Beam Spread, Detachable Hitch

Interior Standards

Customer Choice Decor Selections

2" Plastic Mini-Blinds Throughout

Door Stop All 3 Sides

94" Flat Ceilings

Blown Textured Ceiling

Vinyl Wall Panels Throughout

Flat Wrapped Moldings Throughout

16oz. Plush Carpet by "Shaw"

3/8" Rebond Carpet Pad

Vinyl Flooring by "Congoleum"

Wire Closet Shelving by "Closet Maid"

6 Panel White Interior Doors Throughout

3 Hinge Interior Doors

Electrical, Plumbing, & Heating

Smoke Detectors in Main Living Areas & All Bedrooms

200 AMP Service, Electric Furnace

40 Gallon Electric Water Heater

Exterior Electrical Receptacle (FDS)

Copper Wiring, PEX Plumbing

Conventional Receptacles & Switches

Whole House Shut-off Valve near Water Heater

Water Shut-off Valves (All Sinks & Commodes)

Metal Heat Ducts

GFI Receptacles in Kitchen and Baths

Bedroom Ceiling Lights Throughout

Plumb & Wire for Washer & Dryer

Utility Shelf above Washer & Dryer

Kitchen Standards

"Whirlpool" Electric Coil Top Range (White)

"Whirlpool" 18cf Refrigerator (White)

30" Power Range Hood

30" Overhead Cabinets w/ Fixed Center Shelves

Raised Panel MDF Wrapped Cabinet Doors & Stiles

Concealed Cabinet Door Hinges

(1) Bank of Drawers w/ Residential Rails & Guides

Laminated Countertops

Stainless Steel Kitchen Sink

Shelf over Range & Refrigerator

Bath Standards

Tub Shower w/ Surround w/ Anti-Scald Single Lever Faucet in Bathroom(s)

Garden Tub w/ Surround (Master Bath - Sectionals)

Laminated Countertops

Mirror above Each Bathroom Sink

Power Exhaust Fans in All Baths

China "Water Saver" Commodes Both Baths

White Plastic Sink(s) w/ Dual Knob Faucets

are subject to change without notice or obligation

ADVENTURE HOMES, LLC

www.AdventureHomes.net

1119 Fuller Drive, Garrett, IN 46738

877-510-1955



January
2021