

AMERICAN MADE

*featuring*

AMERICAN FARMSTEAD  
COLLECTION

&

AMERICAN LOFT  
COLLECTION

2019



  
Wakarusa

# AMERICAN FARMSTEAD COLLECTION

## INDEX

### AMERICAN FARMSTEAD COLLECTION

PAGE

AMERICAN FARMSTEAD STANDARD FEATURES . . . . . 3

MODEL	SIZE	SQ. FEET	BEDROOMS	BATHS	
7016-501	.. 70 X 16	.. 1073	.. 3	.. 2	.. 4
7616-500	.. 76 X 16	.. 1165	.. 3	.. 2	.. 5
5228-551	.. 52 X 28	.. 1404	.. 3	.. 2	.. 6
5628-550	.. 56 X 28	.. 1512	.. 3	.. 2	.. 7

**NOTE: American Farmstead standard and decor features are not interchangeable with American Loft floorplans.**

AMERICAN LOFT COLLECTION . . . . . 8

# AMERICAN FARMSTEAD COLLECTION

## KEY STANDARD FEATURES

### INTERIOR

Woodgrain Cornice w/Full Length Drapery Panels  
- Main Living Areas Only  
**2" Mini Blinds T/O**  
**Shaw "Spirit" Carpet with 5# Rebond Pad and Tack**  
Designer "Congoleum" Woodgrain No Wax Vinyl Flooring  
**8' Flat Ceilings Throughout**  
Stipple Ceiling Finish  
"Closet Maid" Ventilated Wire Shelving in Closets  
**2" DuraCraft Flat Ceiling Cove, Door & Window Casing Trim T/O**  
**2-Panel White Arched Interior Doors w/3 Hinges**  
**32" Interior Doors into all Bedrooms and Baths**  
**Barn Door - Pantry or Utility**  
**2-Bulb Flush Mount Light Fixtures (Except Closets)**  
**Recessed Can Lights - Kitchen & Dining Room**  
**Feature Wall w/Wall Sconces, Mirror, Hooks and Galvalume Accent Panels**  
**Media Wall w/Wall Sconces, Mantel, Galvalume Accent Panels and Pipe Brackets**  
**Ceiling Beams - Per Print**  
**Ceiling Fan with Light - Living Room**  
**5" Matching Mate Line Transition Strip - DW Only**

### KITCHEN

**42" DuraCraft Overhead Cabinets**  
Concealed Cabinet Door Hinges  
**Overhead Cabinet over Refrigerator**  
**Fixed Center Shelves in Base Cabinets**  
MDF Stiles  
GFCI Receptacles  
Metal Drawer Guides  
Bank of Drawers  
Cabinet Door Knobs  
High Pressure Laminated Countertops  
**Farmhouse Kitchen Sink**  
**w/Matte Black Gooseneck Faucet w/Pullout Sprayer**  
**Island in Kitchen w/3" Straight Edge Countertop Profile**  
**4" Formica Backsplash in Kitchen**  
**Frigidaire Appliances**  
**30" Free-Standing Electric Range - Black**  
**18 CF Frost Free Refrigerator - Black**  
**Dishwasher - Black**  
**Curved Range Hood - Stainless Steel**  
**Black Pendant Lights over Island**

### BATHS

**36" Bath Vanity Height - All Baths**  
**60" 1pc. Fiberglass Shower in Bath #1 (No Door)**  
**60" 1pc. Fiberglass Tub/Shower in Bath #2**  
High Pressure Laminated Countertops  
**4" Formica Backsplash**  
Porcelain Commodes  
**Power Exhaust Fans w/Lights - All Baths**  
GFCI Receptacles  
**Framed Mirrors - Both Baths**  
**2-Arm Black Vanity Lights - Both Baths**

### INSULATION

**Zone II Insulation Package**  
R-28 Blown Ceiling Insulation with Vapor Barrier  
R-11 Fiberglass Insulation in Walls  
R-11 Fiberglass Insulation in Floors  
High/Low Return Air System  
In-Line Floor Registers

### EXTERIOR

Nominal 3/12 Roof Pitch  
**25 Year CertainTeed XT Fiberglass Shingles**  
**5" White Window Lineals - Door Side (DW)**  
**\*Singlewides Door Side and Hitch End**  
Metal Drip Edge  
Aluminum Fascia with Vented Soffit  
**36" x 80" Front 6-Panel Door w/Residential Storm and Deadbolt**  
**32" x 80" Rear 6-Panel Door w/Residential Storm and Deadbolt**  
**Door Chime**  
**Upgrade Exterior Lights (2) Each Side Front Door and (1) Rear Door**  
Double 4.5" Dutch Lap Vinyl Siding  
(1) Exterior GFI Recept  
**Vinyl Single Hung White Windows - No Grids**  
**Farmstead Exterior Package:**  
**DW - Front Door Side**  
**SW - Hitch End**

### UTILITIES

**200 AMP Service Panel 20/40 Box**  
Electric Furnace  
30 Gallon Electric Water Heater  
Water Heater Pan with Exterior Drain  
PEX Plumbing  
Wire & Plumb for Washer  
Wire & Vent for Dryer  
Recessed Whole House Shut Off  
Smoke Detectors in Main Living Areas & All Bedrooms  
**Conduit Drop for A/C**  
**(1) Frost Free Exterior Faucet**

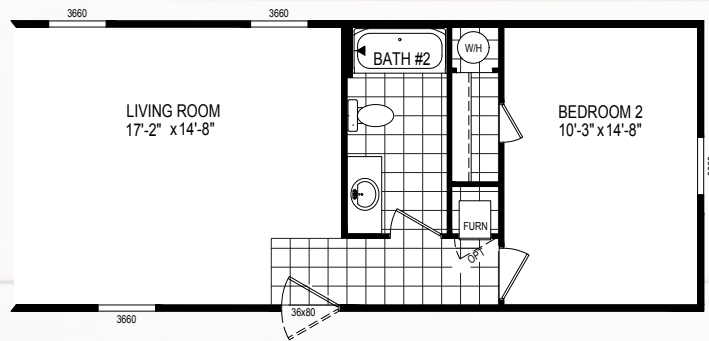
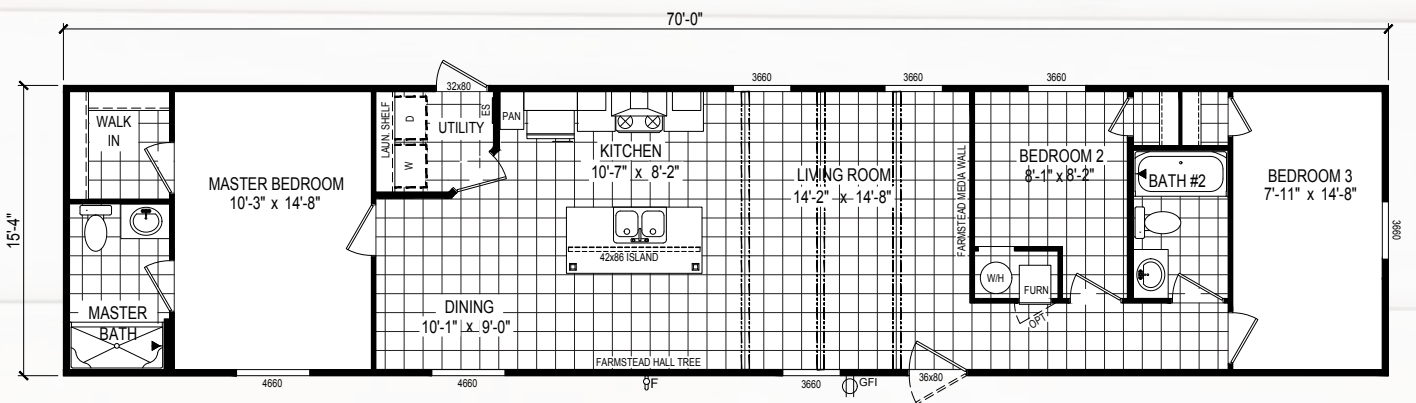
### CONSTRUCTION

Steel I-Beam Frame with Detachable Hitch  
2"x 6" Floor Joists 19.2" O.C. (16" O.C. 16ft Wides)  
19/32" T&G OSB Floor Decking Glued & Fastened  
2" x 4" Exterior Walls - 16" O.C.  
20 lb. Roof Load  
Roof Truss 24" O.C.  
7/16" OSB Roof Sheathing  
Ridge Vent Roof Venting  
Linked Smoke Detectors with Battery Back-up  
**Ecobee3 "Smart" Thermostat**  
Exterior Door Supports - Front & Rear Doors

MODEL NUMBER:

# 7016-501

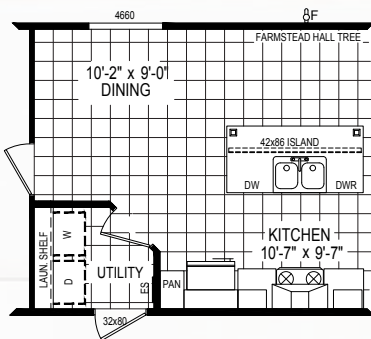
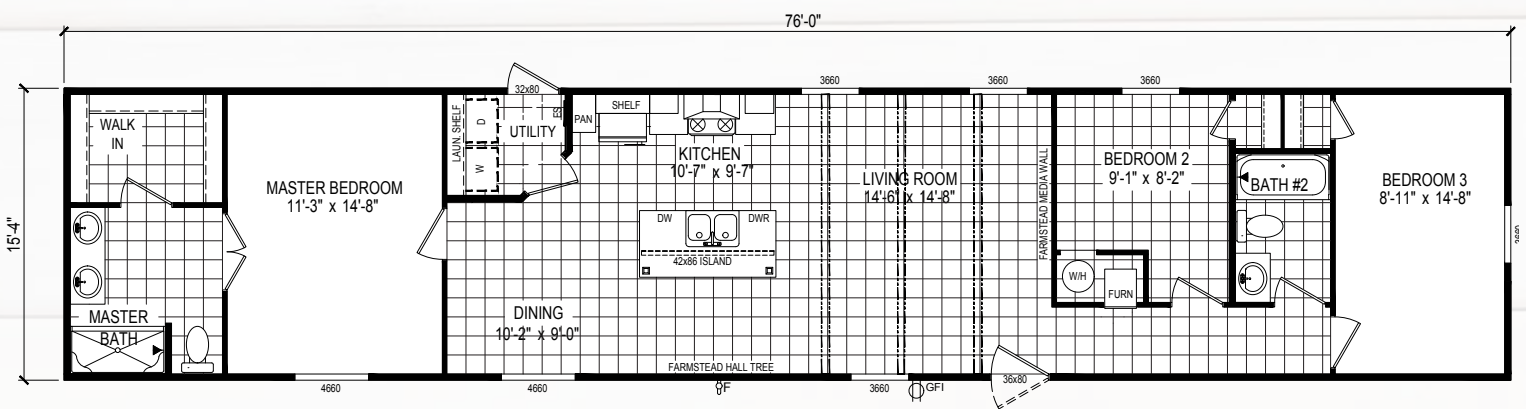
70 x 16 | 1073 Sq. Ft. 3 Bed | 2 Bath



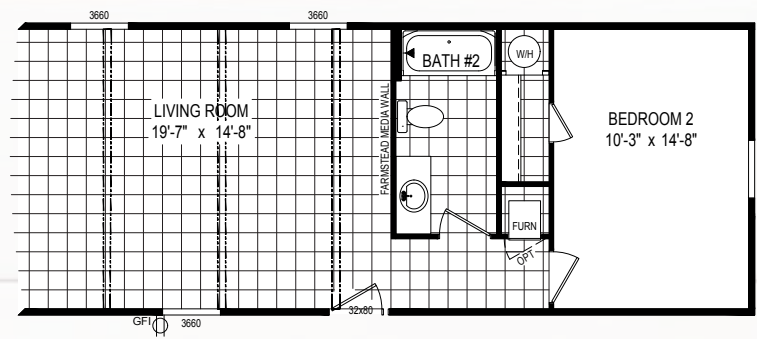
2-BEDROOM OPTION

MODEL NUMBER:  
**7616-500**

76 x 16 | 1165 Sq. Ft. 3 Bed | 2 Bath



REVERSE AISLE OPTION



2-BEDROOM OPTION

MODEL NUMBER:

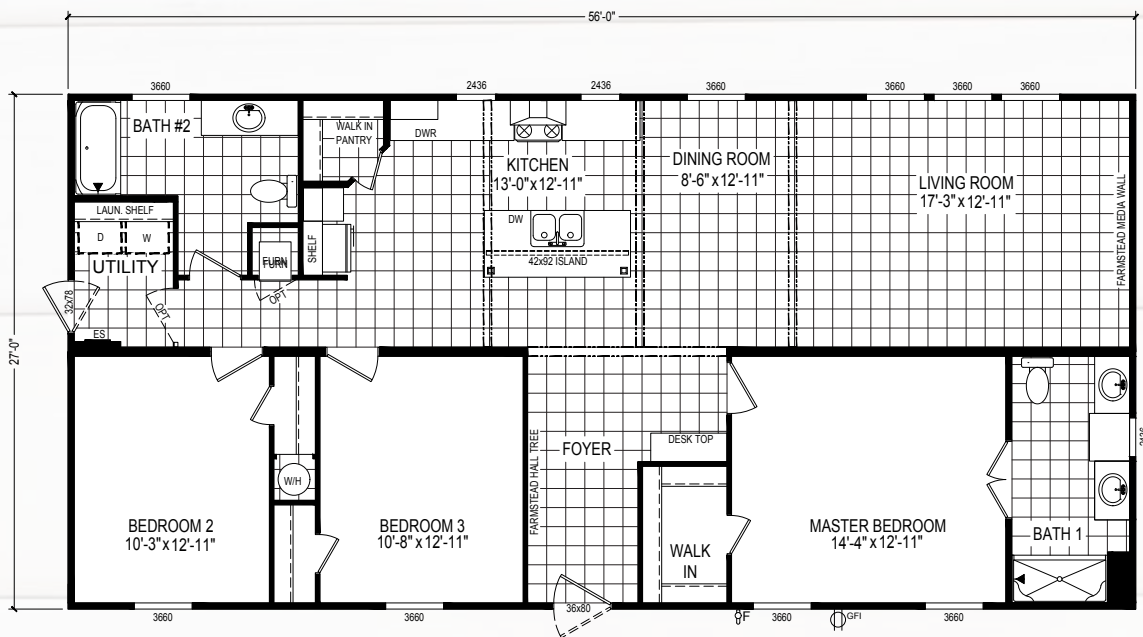
# 5228-551

52 x 28 | 1404 Sq. Ft. 3 Bed | 2 Bath



MODEL NUMBER:  
**5628-550**

56 x 28 | 1512 Sq. Ft. 3 Bed | 2 Bath



# AMERICAN LOFT COLLECTION

2019



  
**Wakarusa**



# AMERICAN LOFT COLLECTION

## INDEX

### AMERICAN LOFT COLLECTION

PAGE

THE LOFT STANDARD FEATURES..... 10

MODEL	SIZE	SQ. FEET	BEDROOMS	BATHS
-------	------	----------	----------	-------

5628-560	.56 X 28	1073	3	2	11
----------	----------	------	---	---	----

---

**NOTE: American Loft standard and decor features are not interchangeable with American Farmstead floorplans.**

# AMERICAN LOFT

## COLLECTION

### KEY STANDARD FEATURES

#### INTERIOR

**Faux Roman Shades - Trepassey Smoke**  
- Main Living Areas Only  
**2" Mini Blinds T/O**  
**Shaw "Spirit" Carpet with 5# Rebond Pad and Tack**  
Designer "Congoleum" Woodgrain No Wax Vinyl Flooring  
**8' Flat Ceilings Throughout**  
Stipple Ceiling Finish  
"Closet Maid" Ventilated Wire Shelving in Closets  
**2" DuraCraft Flat Ceiling Cove, Door & Window Casing Trim T/O**  
**2-Panel White Arched Interior Doors w/3 Hinges**  
**32" Interior Doors into all Bedrooms and Baths**  
**2-Bulb Flush Mount Light Fixtures (Except Closets)**  
**Recessed Can Lights - Kitchen & Dining Room**  
**Loft Media Wall w/Bronze Wall Sconces**  
**Utility Room Feature - Chalkboard w/Coat Hooks**  
**Ceiling Beams - Per Print**  
**3-Blade Ceiling Fan w/Light - Living Room**  
**5" Matching Mate Line Transition Strip - DW Only**  
**Feature Wall - Bedroom 1**  
**Bath 1 Feature - Mirror w/Hooks**

#### KITCHEN

**42" DuraCraft Overhead Cabinets**  
**Open Shelves on Each Side of Range Area**  
**Stainless Steel Loft Range Hood**  
**Overhead Cabinet over the Refrigerator**  
**Fixed Center Shelves in Base Cabinets**  
MDF Stiles  
GFCI Receptacles  
Metal Drawer Guides  
Bank of Drawers  
Cabinet Door Knobs  
High Pressure Laminated Countertops  
**Stainless Steel Apron Kitchen Sink**  
**w/Gooseneck Faucet**  
**Island in Kitchen w/3" Straight Edge Countertop Profile**  
**4" Formica Backsplash in Kitchen**  
**Frigidaire Appliances**  
**30" Free-Standing Electric Range - Black**  
**18 CF Frost Free Refrigerator - Black**  
**Dishwasher - Black**  
**5-Lite Loft Pendant Lights over Island**

#### BATHS

**36" Bath Vanity Height - All Baths**  
**60" 1pc. Fiberglass Shower in Bath #1 (No Door)**  
**60" 1pc. Fiberglass Tub/Shower in Bath #2**  
High Pressure Laminated Countertops  
**4" Formica Backsplash**  
**Power Exhaust Fans w/Lights - All Baths**  
GFCI Receptacles  
**Framed Mirrors - Both Baths**  
**2-Lite Loft Vanity Lights - Both Baths**

#### INSULATION

**Zone II Insulation Package**  
R-28 Blown Ceiling Insulation with Vapor Barrier  
R-11 Fiberglass Insulation in Walls  
R-11 Fiberglass Insulation in Floors  
High/Low Return Air System  
In-Line Floor Registers

#### EXTERIOR

Nominal 3/12 Roof Pitch  
**25 Year CertainTeed XT Fiberglass Shingles**  
**5" White Window Lineals - Door Side (DW)**  
**\*Singlewides Door Side and Hitch End**  
Metal Drip Edge  
Aluminum Fascia with Vented Soffit  
**36" x 80" Front 6-Panel Door w/Residential Storm and Deadbolt**  
**32" x 80" Rear 6-Panel Door w/Residential Storm and Deadbolt**  
**Door Chime**  
Double 4.5" Dutch Lap Vinyl Siding  
(1) Exterior GFI Recept  
**Vinyl Single Hung White Windows - No Grids**  
**Upgrade Exterior Lights Front and Rear Doors**  
**Loft Exterior Package:**  
**DW - Front Door Side**

#### UTILITIES

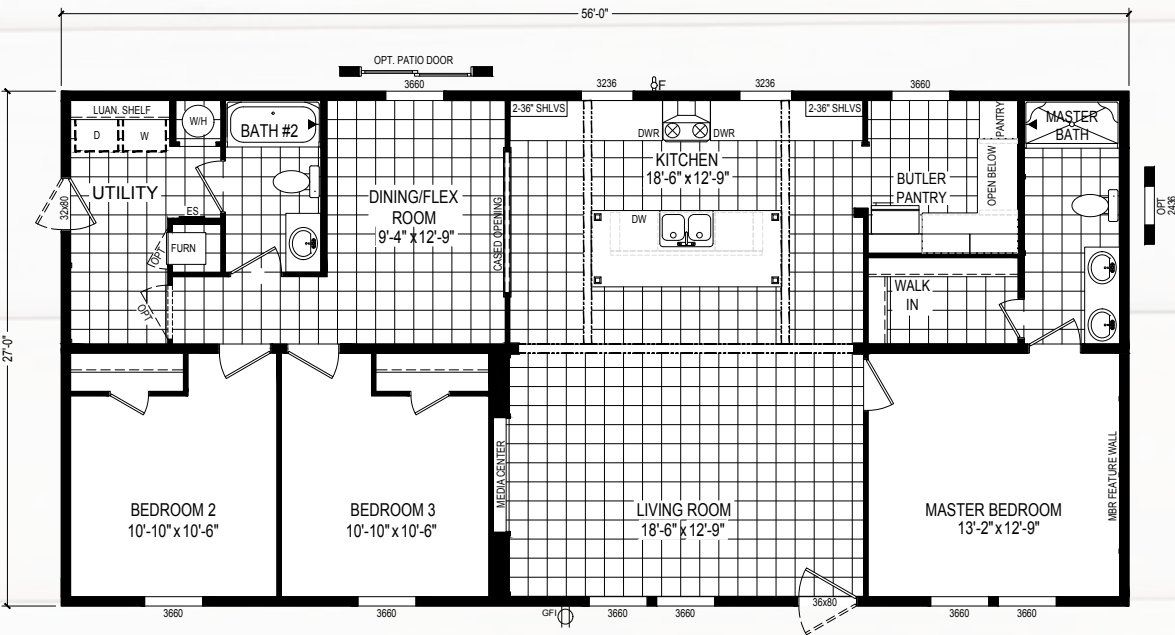
**200 AMP Service Panel 20/40 Box**  
Electric Furnace  
30 Gallon Electric Water Heater  
Water Heater Pan with Exterior Drain  
PEX Plumbing  
Wire & Plumb for Washer  
Wire & Vent for Dryer  
Recessed Whole House Shut Off  
Smoke Detectors in Main Living Areas & All Bedrooms  
**Conduit Drop for A/C**  
**(1) Frost Free Exterior Faucet**

#### CONSTRUCTION

Steel I-Beam Frame with Detachable Hitch  
2" x 6" Floor Joists 19.2" O.C. (16" O.C. 16ft Wides)  
19/32" T&G OSB Floor Decking Glued & Fastened  
2" x 4" Exterior Walls - 16" O.C.  
20 lb. Roof Load  
Roof Truss 24" O.C.  
7/16" OSB Roof Sheathing  
Ridge Vent Roof Venting  
Linked Smoke Detectors with Battery Back-up  
**Ecobee3 "Smart" Thermostat**  
Exterior Door Supports - Front & Rear Doors

MODEL NUMBER:  
**5628-560**

56 x 28 | 1512 Sq. Ft. 3 Bed | 2 Bath





# Wakarusa

AMERICAN MADE

*featuring*

AMERICAN FARMSTEAD  
& AMERICAN LOFT  
COLLECTIONS

Your Local Home Builder

66700 S.R. 19  
Wakarusa, IN 46573  
574.862.4461  
574.862.4559 fax  
[www.claytonwakarusa.com](http://www.claytonwakarusa.com)

Because our company has a continuous product update process, specifications, floor plan lay-out and dimensions shown on this literature are subject to change without notice or obligations. Construction and design specifications as well as features presented conceptual, therefore should not be used as actual construction data and may not be offered in all series or models. Our Retailer will provide accurate, up-to-date information on available options and specifications for your home. 1/19



**Clayton**  
wakarusa