

AMERICAN HOMESTEAD COLLECTION



2019

Clayton
middlebury

AMERICAN HOMESTEAD COLLECTION

STANDARD FEATURES

INTERIOR

SHAW CARPET W/5# REBOND PAD & TACK STRIP
8 FT FLAT CEILINGS THROUGHOUT
TAPED CEILING JOINTS
1/2" DRYWALL THROUGHOUT
BUILDER GRADE PRIMER THROUGHOUT
CEILING BEAMS IN KITCHEN & DINING ROOM
2-BULB CEILING LIGHTS IN SECONDARY BEDROOMS
FARM STYLE CEILING FANS IN LIVING & MASTER BEDROOM
UPGRADED TRIM T/O WITH 3" BASE & 2" CASING
5-PANEL WHITE INTERIOR DOORS
32" INTERIOR DOORS WHERE APPLICABLE

KITCHEN

42" ALABASTER WHITE KITCHEN OVERHEAD CABINETS
CONCEALED EUROPEAN STYLE COUNTER-SUNK HINGES
3/4" ADJUSTABLE SHELVES IN OVERHEAD CABINETS
FIXED CENTER SHELF IN BASE
UPGRADE BLACK CABINET DOOR HARDWARE
WHITE APRON SINK
FRIGIDAIRE APPLIANCES
WHITE 30" DELUXE SELF-CLEANING RANGE
WHITE 18" CF FROST FREE REFRIGERATOR
BLACK DISHWASHER
(4) RECESSED LED CAN LIGHTS IN KITCHEN
RECESSED LED CAN LIGHT OVER KITCHEN SINK - VBP
SCHOOLHOUSE PENDANTS OVER KITCHEN ISLAND
FULL HEIGHT CERAMIC BACKSPLASH
DRAWER OVER DOOR BASE CABINET CONSTRUCTION

BATHS

60" WALK-IN BELLACORE SHOWER
60" FIBERGLASS TUB/SHOWER - BATH 2
HIGH PRESSURE LAMINATED COUNTERTOPS
& 4" BACKSPLASH
ELONGATED PORCELAIN COMMODOES
PORCELAIN LAVS
LIGHTED POWER EXHAUST FANS IN ALL BATHS
SCHOOLHOUSE LIGHTS ABOVE VANITIES
BLACK METAL FAUCETS W/ANTI-SCALD
SHIPLAP MIRRORS

INSULATION

ZONE III INSULATION PACKAGE
- R-28 BLOWN CEILING INSULATION W/VAPOR BARRIER
- R-19 FIBERGLASS INSULATION IN WALLS
- R-11 FIBERGLASS INSULATION IN FLOORS
- METAL HEAT DUCTS

EXTERIOR

NOMINAL 3/12 ROOF PITCH
25 YEAR CERTAINTeed XT FIBERGLASS SHINGLES
36" JELD-WEN FRONT & REAR DOOR W/DEADBOLT
EXTERIOR LIGHT AT FRONT & REAR DOORS
4 1/2" .40 MIL DUTCH LAP VINYL SIDING
EXTERIOR GFI RECEPT
BRONZE ARGON LOW E VINYL WINDOWS
W/6 OVER CLEAR GRIDS
15" SHUTTERS (FDS)

UTILITIES

200 AMP SERVICE PANEL 20/40 BOX
ELECTRIC FURNACE
ECOBEE4 WIFI THERMOSTAT
30 GALLON ELECTRIC WATER HEATER
WATER HEATER PAN W/EXTERIOR DRAIN
WIRE & PLUMB FOR WASHER
WIRE & VENT FOR DRYER
RECESSED WHOLE HOUSE SHUT OFF
WATER SHUT-OFF VALVES THROUGHOUT
GFI PROTECTED RECEPTACLES IN KITCHEN AND BATHS
WIRELESS DOORBELL

CONSTRUCTION

STEEL I-BEAM FRAME W/DETACHABLE HITCH
2" X 6" FLOOR JOISTS - 16" O.C. ON 28 WIDES
2" X 8" FLOOR JOISTS - 16" O.C. ON 30 WIDES
23/32 T&G OSB FLOOR DECKING GLUED & FASTENED
2" X 6" EXTERIOR WALLS - 16" O.C.
20 LB ROOF LOAD
7/16" OSB ROOF SHEATHING
RIDGE VENT ROOF VENTING
LINKED SMOKE DETECTORS W/BATTERY BACK-UP
IN MAIN LIVING & ALL BEDROOMS
7/16" OSB EXTERIOR SHEATHING W/WINDWRAP

MODULAR SPECIFICATIONS ADDITIONS

NOMINAL 3/12 ROOF TRUSS
2" X 10" FLOOR JOISTS 16" O.C.
R-40 INSULATION IN CEILING
ADDITIONAL EXTERIOR RECEPT (2 TOTAL)
30 LB GROUND SNOW LOAD
FIBERGLASS HEAT DUCTS
2" X 4" INTERIOR WALLS
2" X 4" MATE LINE WALL
40/40 200 AMP PANEL BOX
METAL CROSS BRIDGING

AMERICAN HOMESTEAD COLLECTION

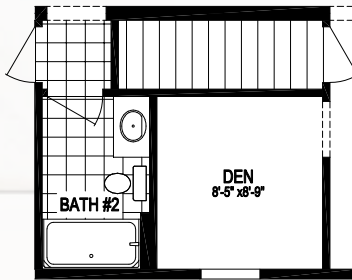
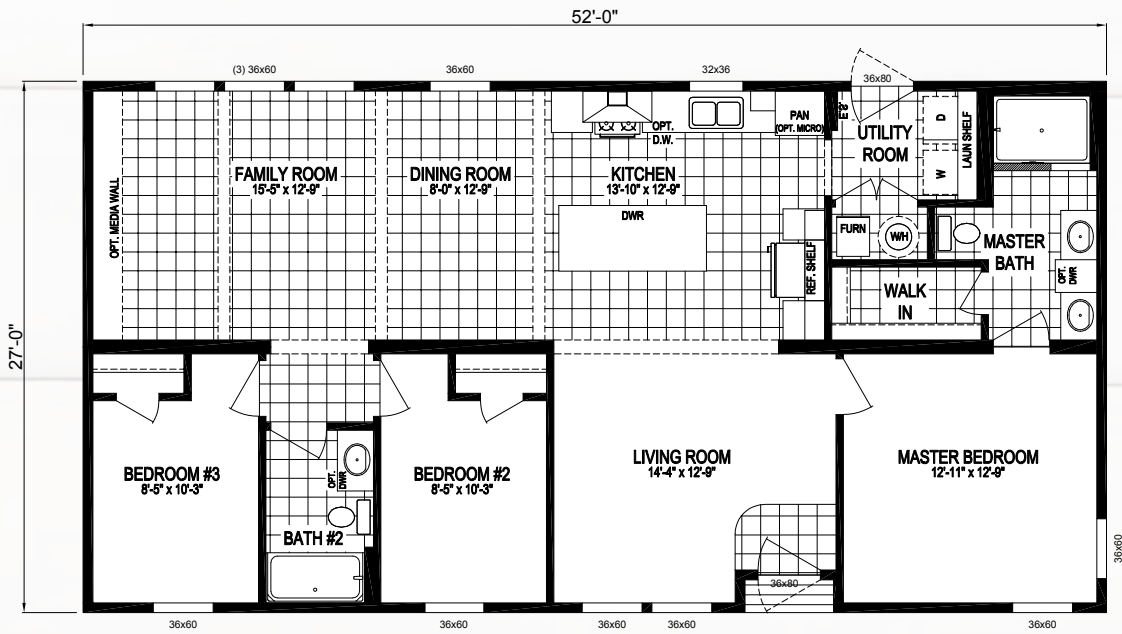
INDEX

MODEL	SIZE	SQ. FEET	BEDROOMS	BATHS	PAGE
5228-1000 52 X 28 1404 3 2 4
5628-1002 56 X 28 1512 3 2 5
6028-1001 60 X 28 1620 3 2 6
6030-1001-1 60 X 30 1800 3 2 7

MODEL NUMBER:

5228-1000

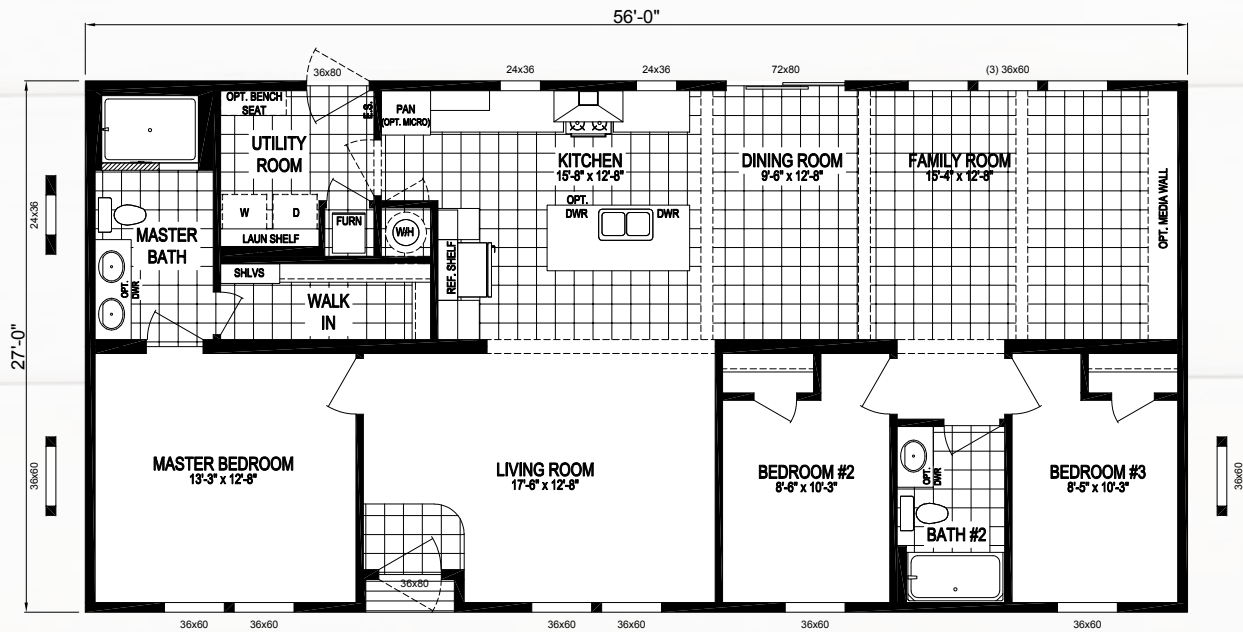
52 x 28 | 1404 Sq. Ft. 3 Bed | 2 Bath



OPTIONAL BASEMENT STAIRWELL
(ONLY AVAILABLE AS A 2 BEDROOM)

MODEL NUMBER:
5628-1002

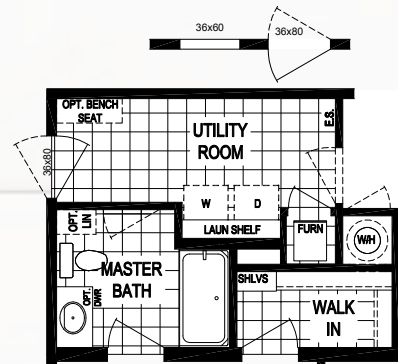
56 x 28 | 1512 Sq. Ft. 3 Bed | 2 Bath



NOTE:
 HUD HOMES THAT HAVE A GAS WATER HEATER AND A 5/12
 ROOF PITCH WILL REQUIRE AN "SC" ON SITE INSPECTION



OPTIONAL BASEMENT STAIRWELL

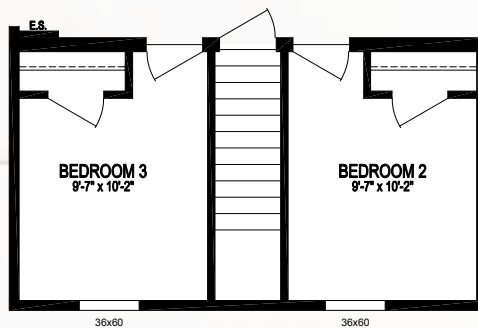
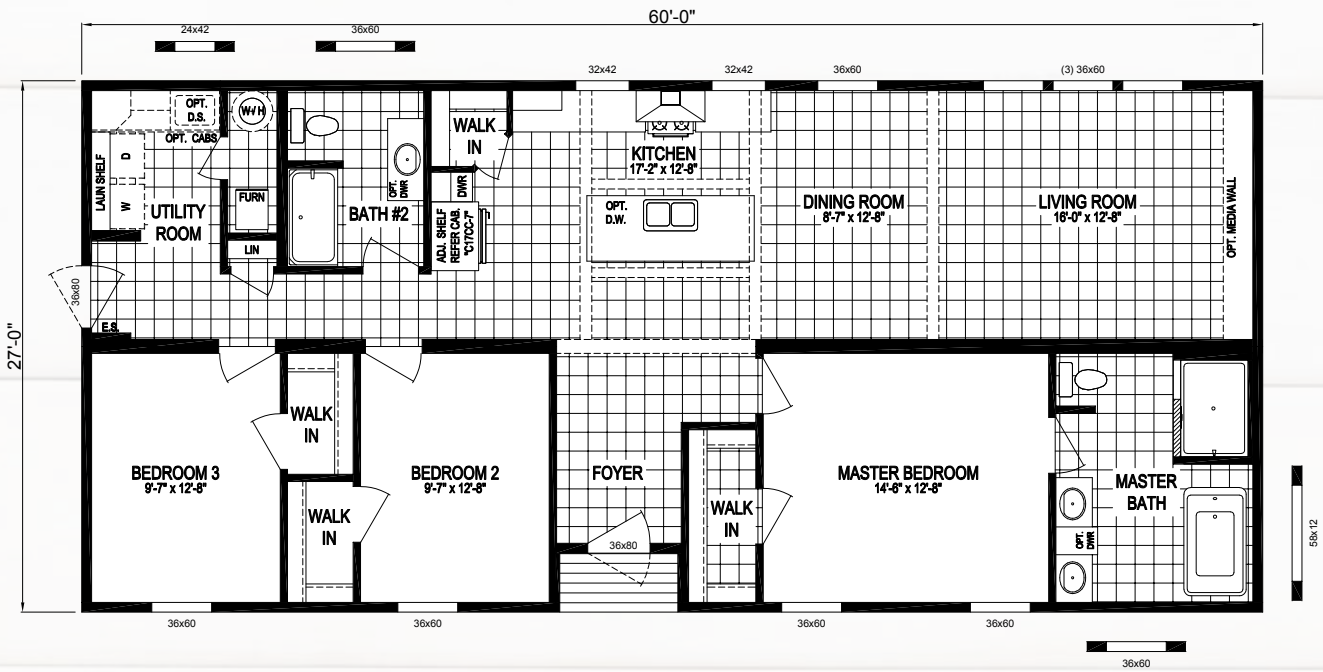


OPTIONAL END ENTRY
 (BELLACORE SHOWER NOT AVAILABLE)

MODEL NUMBER:

6028-1001

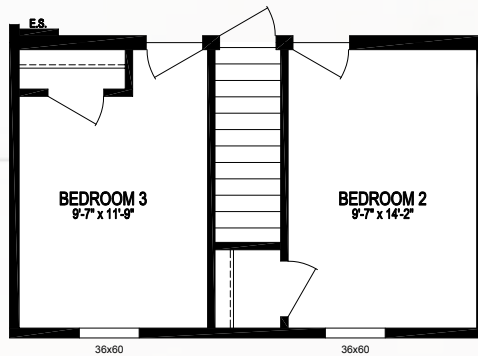
60 x 28 | 1620 Sq. Ft. 3 Bed | 2 Bath



OPTIONAL BASEMENT STAIRWELL

MODEL NUMBER:
6030-1001-1

60 x 30 | 1800 Sq. Ft. 3 Bed | 2 Bath



OPTIONAL BASEMENT STAIRWELL

AMERICAN HOMESTEAD COLLECTION

2019



Your Local Home Builder

437 N. Main Street
Middlebury, IN 46540
574.825.7500
574.825.7569 fax

www.claytonmiddlebury.com

Because our company has a continuous product update process, specifications, floor plan lay-out and dimensions shown on this literature are subject to change without notice or obligations. Construction and design specifications as well as features presented conceptual, therefore should not be used as actual construction data and may not be offered in all series or models. Our Retailer will provide accurate, up-to-date information on available options and specifications for your home. 1/19

**Clayton**
middlebury